

HaKol

The Voice

A Publication of Congregation B'nai Tikvah



MAY, 1994

VOLUME 16, NUMBER 9

IYAR-SIVAN, 5754

PRESIDENT'S MESSAGE

This is my final article under this title. It has been a great pleasure and honor to have served you as president for the past two years. I intend to remain active in synagogue affairs -- hopefully for many years.

While my term is finished at the end of June I wrote this for May's HaKol so that the incoming president could address you before the High Holidays.

So much for the farewell, what about the future? It depends on the interest and dedication of our newer members, young and old.

Never underestimate what one person or a small group of people can accomplish when dedicated to the task.

In 1979, Michael Kaplan, a local builder, knocked on my door. He asked for my help in building a synagogue in Hidden Lake, to honor his father, who had recently passed away. I drove around the development (it was early summer, so people were outside) stopping at all the Jewish households I knew. Thus, the North Brunswick Jewish Community Center was formed. NBJCC entered into

merger talks with Sharri Shalom and later Beth Shalom. The result was B'nai Tikvah.

It took lots of people and many years of hard work. But dedicated people taking one small step at a time can literally move mountains.

You can make a difference -- take the first small step -- get involved.

--Jack Mailman

AN IMPORTANT MESSAGE

From the editors of HaKol to all.... Current presidents, past presidents, future presidents, wanna-be presidents, committee people, regular people, irregular people, etc. DON'T just read HaKol, use it! HaKol is excellent when CONGREGANTS contribute to it. The most supportive comments we receive are when individuals write their own articles that are of a personal perspective. Topics can be about any number of issues including: Torah, a current event, book, or about Jewish living. We will accept anonymous contributions, but if you are taking the time to write us, you might as well take the credit!

P.S. The editors wish to thank "Nana" whose column has given us something to kvell over; and to Mili Rosloff for the wonderful information which is provided in her About Us column. Both of these monthly features have become part of the fabric of HaKol and we appreciate the hard work their respective authors put into them.

Photography
by

- * WEDDINGS
- * BAR/BAT MITZVAHS
- * PORTRAITS

Bruce Gaynor

199 WESTGATE DRIVE, EDISON, NEW JERSEY 08820

(908) 756 - 8517

... a note about our photography coverage...

Our goal is to provide fine photography and pleasant memories of your very special day. We plan your photography sessions as to allow you, as well as your family and guests to enjoy the affair. Pre - wedding ceremony photographs are scheduled to allow a complete but relaxed session. Bar / Bat Mitzvah portraits are also planned in a similar manner keeping all religious aspects in mind. Please call us to discuss your photographic needs today.

PHOTOGRAPHING MEMORIES FOR OVER 20 YEARS



----RELIGIOUS SCHOOL UPDATE----

How quickly the year flies by-- May already. By now the **Bet Class** has had their "Shabbat Family Dinner and Service". It was lovely and enjoyed by all! We are looking forward to a **Dalet Class** "Together" program on May 15th. The theme will be Shavuot, since the holiday of Shavuot is just around the corner.

June 10th will be our **Hey Class** graduation. June 12th is our final day of school. Each class will be presented their various certificates at an assembly during their class time. Parents and siblings are invited to join us for the final ceremonies. We will also be honoring our teachers at this time.

I'd like to wish everyone a Chag Sameach for Shavuot! I look forward to seeing you all at our closing ceremonies!

Shalom L'Hitraot,
Vickie Lynn Amron

----NURSERY SCHOOL NOTES----

The Pre-Kindergarten children appreciated the visit from Rabbi Warmflash and Cantor Goldberg when they burned the chometz before Passover.

Last month's celebration of Yom Ha-atzmaut, Israel's 46th birthday, also included a guest entertainer, Carrie Walinsky, as well a birthday cake, songs, related crafts, a video, various discussions, our own Kotel and viewing objects that came from Israel. Everyone dressed up in blue and white to enhance the spirit!

An all-day trip is planned for the Pre-Kindergarten children to Jenkinson's Aquarium in the beginning of the month.

A unit on Shavuot and the Ten Commandments is scheduled to be introduced with stories, crafts, songs and the consumption of homemade blintzes.

A family picnic is planned for Sunday, May 22nd, if it doesn't rain, in a near-by park.

If you have a child who will be ready for Mommy & Me in October (18 months and up), let the nursery school office know so that we can add your name to the mailing list (297-0295).

OUT-OF-THE MOUTHS OF BABES:

The teacher told the class about "mean" King Pharaoh who wouldn't let the Jewish People go. After Pharaoh was punished, he finally did agree and Tayla's immediate response was, "that was "nice" of him!"

The teachers were discussing the weather and one teacher said she was cold. Jason matter-of-factly told her to "turn on the air conditioner"!

Each child was called to the table individually to put fringes on their matzah covers. After Danny's was completed, the teacher held it up and said, "Your matzah cover is finished." Danny laughed and said, "It's not a matzah cover, it's a magic carpet!"

Joan Shames, Director

Tova's Kosher

Certificate of Kashrus

JULY 1, 1993

This is to certify that
Tova's Kosher Kitchen, Inc.
of Hightstown, New Jersey,
is under my strict Orthodox supervision,
and all foods, including those prepared
on the premises, are Strictly Kosher.

*This certificate expires on June 30, 1994,
and is renewable at that time.*

Rabbi M. Steinberg
Rabbi Moshe Steinberg
Home #609-482-1615

Kitchen

-----ABOUT US-----

Petra, Jordan--Archaeologists have found scores of ancient papyrus scrolls, probably as old as the famous Dead Sea Scrolls, midst the ruins of a Byzantine church that collapsed more than 1400 years ago in this ancient city.

Kenya--An 80th anniversary has been marked by the Nairobi Hebrew Congregation. This community has 141 Jewish families, with a total of 312 people. Kosher meat and poultry are imported from South Africa.

Malawi--Dr. Shmuel Levinger of Hadassah Hospital was recently flown to Malawi at the request of their president to perform surgery on the Minister of Protocol. News of his arrival spread, however, and he remained to operate on an additional 21 patients.

Phoenix, Arizona--A Burger King eatery in Phoenix has the usual name of the firm spelled out in an oversized sign at the roadside. Last Rosh Hashanah, they added a huge billboard-type sign underneath it. It read, "Happy Yom Kippur!" (Is the proper response, "Same to you?")

New York City--This reminds us of this tale: A scholar who required a particularly hard to find book, phoned a large chain bookstore, and asked for "Guide for the Perplexed", by Maimonides, the 12th century rabbi, physician, and philosopher. The reply? "Sorry, madam, we don't stock self-help books."

Sloatsburg, New York State--At the request of travelers on the New York Thruway who are caught in summer traffic when the time for prayers arrives, an area has been set aside at the Sloatsburg rest stop for "mincha" services.

Penalty--American Express neither admitted nor denied wrongdoing, but nevertheless paid a \$103,000 fine last fall for 39 alleged violations of Federal laws prohibiting compliance with the Arab boycott of Israel. Our Commerce Department listed infractions which included providing Lebanese and Omani banks with information about companies that do business with Israel.

Jewish Growth--The Jewish population of the Boca Raton and Delray Beach areas in Florida has increased by nearly 50% in the past four years, making Palm Beach county the fastest growing Jewish area in the United States.

War Crimes Witnesses--The war crimes branch of the Royal Canadian Mounted Police is searching for witnesses to the mass tortures and killings near the village of Potichok, and near the town of Snyatin in the Ivano-Frankivsk region of the Ukraine. If you can help, please contact the World Jewish Congress in New York.

The Bagel Saga Continues--An early Greek is said to have chided his baker for the hardness of his bread by sending him a doughnut-shaped meteoric specimen. In return, the baker presented him with an unsweetened doughnut that compared favorably in firmness with the meteorite. Very little change has taken place since. (Courtest, El Al Airlines)

L'hitraot,
Mili Rosloff

-----B'NAI TIKVAH-----
CONGREGATIONAL PICNIC
PLANNED

On Sunday May 22nd, in Reichler Park, South Brunswick, everyone is invited to partake between the hours of 12pm to 5pm games, contests, prizes, food and fun! There are playground facilities as well as ballfields available for our use.

Don't miss this opportunity to meet and have fun with your friends and other B'nai Tikvah members!

If you are interested in attending the picnic, please mail a check payable to "Congregation B'nai Tikvah" in the amount of: adults \$5.00 each; children \$3.00 each to

Bill Greenberg, V.P.-Membership
473 Halsey Road
North Brunswick, N.J. 08902

-----SPECIAL YOUNG JEWISH-----
ADULTS FORMING
SOCIAL GROUP

Young adults with a mild to moderate mental disability within the Central New Jersey area are being sought for the purpose of forming a social interaction group. (Similar groups are active in other New Jersey communities and also in surrounding states.)

Your young adult son or daughter between the ages of 18 and 30 can be part of this exciting new group--a group which will provide an opportunity for social interaction and development of friendships with other Jewish young adults like themselves!

If interested, please respond to: Special Adults
c/o Elene Kurtzman
1060 Tall Oaks Drive
Bridgewater, N.J. 08807

Please include your name, the name and age of your young adult and your address and telephone number. You will be notified of the first get-together! For further information, please call (908) 722-2810.

Please note that we are in need of volunteers who can give a few hours a month to help this dream become a reality for these young adults. Thank you!

-----MORE ISRAEL BONDS...-----
PLEASE!

If you were not able to attend the recent Israel Bond breakfast honoring Mark and Judy Roller, there is still time to buy a bond in their honor. Just call the Israel Bond Office in Highland Park at 828-0200. They will be happy to walk you through the various types of bond offerings and the registration process as well.

And by the way, don't forget to turn in your matured bonds. You can either take the cash or roll the proceeds over for new bonds.

Thank you!
Aaron Rosloff

SISTERHOOD CONNECTION

ANNUAL SISTERHOOD FASHION SHOW

Bring a Friend!
Enjoy a sumptuous dinner!
View the Latest Fashions!
Door Prizes Galore!

Join us for the best Sisterhood Fashion Show ever. See your friends and fellow congregants walk down the runway in clothes by Madeline Shrank of Metuchen. See you **Thursday, May 19, 6:30**

Tickets are \$38 each. For details call Jill Stone at 908-214-1912. Co-Sponsored with Sisterhood of Congregation Beth Chaim of East Windsor.

SHEVUOT

Shevuot occurs on May 16 & 17. Here is an excerpt from a D'var Torah on the holiday:

In our modern world...we of Women's League are particularly interested in the Festival of *Shevuot*, for it is also known as *Z'man Matan Torataynu*, the Time of the Giving of the Torah, which refers to the revelation at Sinai. This accounts for the reading of the Book of Ruth at services, for it was Ruth, a Moabite, who accepted the Torah given to Israel at this season and was rewarded for her commitment by becoming an ancestor of the messianic house of David. Because it marks the time when the Almighty revealed Himself and gave our ancestors the ten commandments, the rabbis declared *Shevuot* the most pleasing of all of our holidays...

There has been no love story in Jewish history more lasting than that between the Jew and the Torah...The late Rabbi Morris Adler, in defining its significance to the Jewish peo-

ple, stated that Torah is the quest of the mind for understanding and of the spirit for fulfillment. It is the tree of life and in its shade alone can the Jew find completeness, peace, and serenity...

As we celebrate the joyous festive of *Shevuot* and review our accomplishments of the past season, let us remember that the Torah is not only our inheritance but our legacy. Through its study and our performance, let us forge the link from generation to generation, which is the lifeblood of the Jewish people!

--Ruth M. Perry, Elkins Park, PA

WANTED: YOUR FAVORITE RECIPES

Sisterhood plans to publish a brand new cookbook and needs exciting, low fat, delicious, kosher recipes. If you have a tried and true favorite, send it to Sisterhood c/o Synagogue Office.

SPEAKING of recipes, here's a favorite for *Shevuot*, *Blintz Souffle*: ¼c melted butter, 18 cheese-filled blintzes (unfried), 2c sour cream, 6 eggs, ¼c sugar, 1 tsp ea. vanilla extract and cornstarch, ½ tsp salt. Coat bottom of 9"x13" pan with butter. Arrange blintzes side by side in pan. Beat sour cream and eggs until fluffy. Beat in remaining ingredients. Pour over blintzes and bake uncovered in 350°F oven 1 h. Serve hot. 6-8 servings.

--From *The Enchanted Broccoli Forest*

GO FOR IT! SEND A LEAGRAM!
(Hilda Kaufman 422-0687)

WATCH for a flyer on this month's Meeting scheduled for May 11.

MARTIN A. SPIGNER

Attorney at Law

Tax Planning & Preparation
Estate & Business Planning
Wills • Real Estate
Bankruptcy • Collections
Medicaid Planning
Municipal Court

**INITIAL
CONSULTATION
FREE**

64 North Main Street • Cranbury, NJ
(Across from the Cranbury Post Office)

(609) 395-8877

Sam Rosenzweig, Torah reader extraordinaire, Haftorah chanter supreme, Magillah reader, Cantor on-call, father of the (B'nai Tikvah) new constitution, parliamentarian, local amateur actor and Professor of Mathematics. As Professor he gets paid; for his effort at B'nai Tikvah he is compensated by the love he has for what he does and by the honor we give him on June 5, 1994:

The B'nai Tikvah Hall of Fame

sponsored by

The Men's Club

On June 5, 1994 a breakfast roast (friendly and mild) will be held to honor our first inductee:

Sam Rosenzweig

All congregants and friends of Sam are invited

Tickets are \$18 (Chàì)/person

your check is your reservation!

Please mail your reservations to:

Men's Club
Congregation B'nai Tikvah
1001 Finnegan's Lane
North Brunswick, NJ 08902

Hall of Fame Breakfast

Name _____

Address _____

of tickets _____

I would like to be a roaster and speak at the breakfast

Do you know what your home is worth?



"Our People Make the Difference"

I have successfully marketed many homes in your area.

As a professionally trained Real Estate Broker, I make it my business to know the value of homes in your neighborhood. I can provide you with (at no cost or obligation) a professional comprehensive market analysis of your property.

Simply call me at (908) 297-0600 or (908) 297-0243.



EDIE SORKIN

- Broker-Sales Representative
- Certified Real Estate Instructor
- NJAR Million \$ Sales Club 1986



FLYING COLORS

"We Create Party Fantasies"

- Weddings • Engagement Parties • Bar & Bat Mitzvahs
- Anniversaries • Corporate Parties
- Sweet 16's • And All Other Occasions!

We Specialize In : Unique Balloon Decorations • Invitations
• Table Centerpieces • Favors • Bridal Party Gifts
• Sign in Boards & Albums • Printed Ribbon • Yarmulkas
• Cake Toppers • Bridal Accessories

(908) 238-1998



• ATHLETES FOOT • NAIL FUNGUS • SPORTS MEDICINE • FLAT FEET • HAMMER TOE • WARTS

IT'S NO FUN IF YOUR FEET HURT

**Bunions Aching?
Arches Falling?
Corns Throbbing?**

Foot problems can cause problems all over. The cure may be quick & easy! Talk to a foot specialist & get more fun out of life.

Most treatments are covered by medical insurance plans

Call for a Consultation or **FREE** Brochure (908) 297-5800

1646 Route 130, North Brunswick
Dr. Robert Fink/ Dr. Lisa Needleman
PODIATRIC MEDICINE & FOOT SURGERY

SPORTS MEDICINE • HEEL PAIN & ARCH INSERTS

THE BRUNSWICK FOOT & ANKLE GROUP

-----B'NAI TIKVAH'S MAKHELA-----
CHORUS SCORES HIGH
IN SUCCESS!

The congregation's own Makhela, now in its fourth year, has come along way due to the drive and spirit of its members. The group has recently acquired the services of Anna West Ott, who will be conducting the chorus along with Eve Goldberg.

Ms. Ott brings a wealth of vocal and conducting experience to the group. She holds a BA in Music Education and Piano from Douglass College and a MA in Vocal Performance from Trenton State College. Ms. Ott has also studied Choral Conducting at Westminster Choir College. She has a strong interest in Jewish music having performed many Jewish works since 1984 when she joined a professional quartet at Temple B'nai Shalom in East Brunswick. She currently performs with Kol Rina--a two year old Jewish Community Chorus in Middlesex County.

Ms. Ott is enthusiastic about leading the group. "There is a wealth of Jewish art music that goes beyond the traditional chants and folk songs we all know," says Ms. Ott, "and I'm very excited about sharing it with the Makhela. We've got some good singers, great potential and lots of enthusiasm to break new ground."

Makhela members are also enthusiastic about Jewish music. For some, it's the joy of re-experiencing music from childhood or camptime; for others, it's being enriched with Jewish culture for the first time. "It's a great joy

to enhance the synagogue services in our way," explains long time member Nancy Danto-- "besides, my Hebrew has improved!" "Makhela, for me, is an expression of Jewishness in a musical way that I can make my own," Rachel Shaneson adds. When asking other members why they enjoy the Makhela: in unison, Toby Erhlich and Cheryl Asnis interject "members get great seating on the High Holidays." "It's an opportunity to experience Jewish culture in a unique way," says another member, "we are a community of Jews, encountering and living our Jewish heritage."

Makhela's repertoire includes classic liturgical hymns, Yiddish folk songs and music of contemporary composers such as Leonard Bernstein, Max Janowski, Debbie Friedman, Ben Steinberg and Michael Isaacson.

We are extremely fortunate to have a chorus of our own at B'nai Tikvah. Being able to cultivate this experience right in our own community is a wonderful accomplishment.

The Makhela welcomes new members. Some choral experience is helpful, but NOT required. NOW is the time to get on board since the group will soon begin rehearsing music in preparation for the High Holidays. Rehearsals are Thursday evenings, 8:30 - 9:30pm. Makhela sings during Shabbat services generally once a month, alternating Friday and Saturday. Please contact Eve Goldberg (422-0038) or Dorothy Cohen (821-4376) for more information. Come join us!!

MAZEL TOV & YASHAR KOACH
to our fellow congregants
who will become a Bar/Bat
Mitzvah in the month ahead

June 4th Lisa Kane
June 11th Ryan Leo
June 18th Chad Austein
June 25th Aryeh Warmflash

CONDOLENCES TO:

Marvin Schwartz on the loss of
his wife, Roslyn Schwartz.

PRAYER BOOK FUND:

Susan & Stuart Pack in honor of
Dr. Murray Treiser.

Fran & Mark Kaufman in honor of
Cantor Goldberg, for his
dedication and devotion in
helping Erica prepare for her
Bat Mitzvah.

Phyllis & Leon Horlick in
memory of Gertrude Nevins.

Phyllis & Leon Horlick in
memory of Moses and Edith
Falthzik, parents of Ann
Rosenzweig.

Nancy & Barry Kivor in memory
of Sharon Schlanger.

RABBI'S DISCRETIONARY FUND:

Elayne & Bert Sichel in memory
of Isadore and Marta Sichel.

Bruce Rockman.

YARZEIT FUND:

Carol & Ephraim Botnick in
memory of Maurice Botnick.

Alice Poch in memory of Ernest
and Esther Tischler.

Bryn & William Schain in memory
of Elias Weinberger.

Iris Gottlieb in memory of
Charles Gottlieb.

Shirley & Meyer Ketofsky in
memory of Roslyn Ketofsky.

Roslyn Naiburg in memory of
Harry Hirschfield.

Sydell & Jonathan Spinner in
memory of Esther Horowitz
Silverman.

Phyllis & Howard Rich & Family
in memory of Herman Rich.

Abbey & Bernard in memory of
Louis Lorber.

Ruth Reich & Dagobert David in
memory of Louis Reich.

Arnold Lidsky in memory of
Ilisa G. Lidsky.

Irina & Solomon Dinkevich in
memory of Zusman Dinkevich.

Audrey Owen in memory of Rose
Farber and Raymond Owen.

Roslyn Naiburg in memory of
Elias Naiburg.

LIBRARY FUND:

Marlene & Ken Salzinger in
honor of Susan Kleinman.

GENERAL FUND:

Hutt & Berkow Partnership in memory of Gertrude Nevins.

Lisa Podsiadlik in memory of Gertrude Nevins.

SIDDUR TIKVAH--
JR. CONGREGATION PRAYER BOOK

Amy & Clifford Smith & Family in memory of Irving Ruther.

Phyllis & Barry Safeer in honor of Rebecca Hilary Safeer.

Barbara & Harvey Abramson in honor of their granddaughter, Eliza Anne Abramson.

Fran & Philip Weinstein in memory of Leo Gorcey.

Robin Fishbein & David Yucht in memory of Sarah Yucht.

Phyllis, Jerry, Abby & Scott Edley in honor of Erica Kaufman's Bat Mitzvah.

Mili & Aaron Rosloffin memory of Philip Liebman.

YOUTH FUND:

Phyllis & Barry Safeer in honor of the birth of Daniel Levin, son of Renee and Steve Levin.

Phyllis & Barry Safeer in memory of Anne Grodman, mother of Joe Grodman.



Belated Thank You

We would like to thank the following behind the scenes people for helping us with the Yom HaShoah remembrance program.

Arthur Cederbaum - for chairing the program

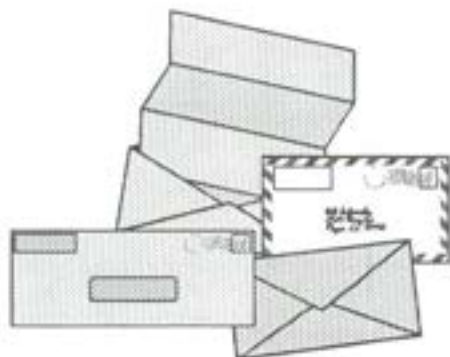
Arlene Cederbaum, Joe and Renee Grodman
for putting all the boxes together

The following aided us with their financial support to purchase the materials:

Amy and Alan Berger
Dorothy and Larry Cohen
Michele and Rich Diatlo
Suzanne and Stanley Levine
Jack Mailman
Judy and Mark Roller
Suse and Walter Rosenstock
Mili and Aaron Rosloff
Marcia and Jeff Schwartz

The following aided us in stuffing, sealing, labeling, stamping and sorting:

Arthur Biderman
Alan Brown
Jerry Edley
Ed Hirsch
Alan Kane
Alan Levine

**Who Is Sam Rosenzweig ?**

When the time comes during a Shabbat or holiday service to read the Torah.

A familiar figure rises from the congregation well prepared for the task. When the time comes at Simchat Torah to turn to any point in the Torah and read.

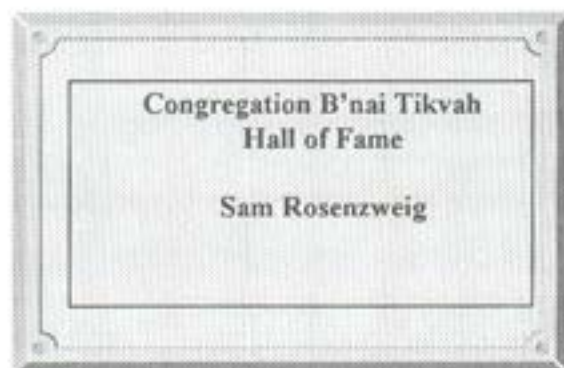
A familiar figure is called upon and has yet to be stumped.

When the time comes at Purim to read the Magillat Esther.

A familiar figure undertakes this long task.

Sam Rosenzweig is the familiar figure described in all of the above. He could also be found chanting a Haftorah or singing in the Makilah. We felt it was time to pay tribute, since he doesn't receive any money, to Sam for all his years of unselfish service to Congregation B'nai Tikvah.

We will host a breakfast in his honor on June 5, 1994. See the enclosed flyer for further details and reservation information.



When we're at work...It's a **PARTY!**

Stan Allen  Music Inc.

SHOWCASING NJ's HOTTEST BANDS AND DJ's MONTHLY

We've got what it takes
to make your party.

SIZZLE!!

Please Call for Details or
a Private Viewing

(908) 946-2424

Like thousands of others
you'll be glad you called us!

MATH TUTORING
FOR
SAT GRE GMAT

WILLIAM A. GREENBERG

297-6953

(908) 297-2000
Fax: 908-821-5017



OAK CREST COUNTRY DAY SCHOOL AND CAMP
RD #2 365 Cortelyou Lane, Somerset, N.J. 08873

EILEEN KAPLAN
Director

ANNE LYMAN
Assistant Director

**Optical
Insight**

CONTEMPORARY EYEWEAR

All Prescriptions Filled -
Lenses Duplicated

EYE
EXAMINATIONS
BY APPOINTMENT



778 RT. 1 (North) Carolier Shopping Center
NORTH BRUNSWICK, NJ

Joseph D. Grodman, FNAO
828-EYES (3937)



----SPONSORS NEEDED, PLEASE----

We, as a congregation, would greatly benefit (both spiritually and financially) from the opportunity of sharing with your family its nachas or milestones or memories of a loved one. By sponsoring one of the following "Jewish life activities", you are helping to maintain and strengthen the Jewish community in which you live.

Once each month, after Saturday Shabbat services, the congregation is invited to partake in an ample lunch (which is sponsored by one or more people) and then to study Jewish texts with Rabbi Warmflash. This very successful program, now in its third year, is called "Lunch and Learn" with Rabbi Warmflash.

For information on price and scheduling, please call our dedicated volunteer, Meryl Heit at 297-6284 (evenings).

Onegs after Friday night Shabbat services and Kiddushes after Saturday morning Shabbat services are in need of being sponsored by one or more people. Please come to Shabbat services and then share your family's nachas or milestone or memories with your "extended family".

For information on price and scheduling, please call our dedicated volunteer, Deborah Spigner at 545-8457 (evenings).

ONEG SHABBAT & KIDDUSH SPONSORS
MAZEL TOV AND YASHAR KOACH TO:

Ruth & Paul Schwartz in honor of their daughter Marisa's Bat Mitzvah.

Jerome & Deborah Rosen in honor of their son Brad's Bar Mitzvah.

Couples Club to celebrate their annual Family Shabbat Diner.

Barbara & Harvey Abramson to celebrate the naming of their first grandchild, Eliza Ann.

----HOUSE FOR RENT-----
IN DAYTON, N.J.

- ***7 years old, corner lot
- ***2 Bedrooms
- ***2-1/2 Bathrooms
- ***Garage
- ***Central air conditioning
- ***All appliances included
- ***8 minutes from B'nai Tikvah
- ***Call Dr. Spiegel at
(908) 634-0062 ***

---- LOOK ! ! ----

The Personal Touch has changed for the better! The Personal Touch has become Ann's Personal Touch. I've moved into the Jewelry and Gift Emporium, at 2223 Route 1 South, North Brunswick. (That's the shops at Commerce Place.)

I've added several specialty gift lines to complement the extensive needlepoint and cross stitch materials that I already have on hand.

Stop by any Wednesday from 2-6pm, Thursday and Friday from 10am-6pm, and Saturdays from 10am-5pm. Other times are by appointment. Give me a call at 249-9141 to set a convenient time. If you mention Hakol, be prepared to receive a special discount.

Hope to see you soon,
Ann Rosenzweig

PRESENTING...DEAR NANA



Dear Readers:

I received this letter from North Brunswick and thought that you

would find the subject of interest.

Dear Nana: My son is embarrassed to wear his Kippah in front of his non-jewish playmates. Do you have any suggestions as to how I can make him feel more comfortable? Concerned Mother in North Brunswick.

Dear Mom: Of course we want our children to take pride in their heritage and to identify as Jews. But remember that children do not like to feel different. You did not say how old your child is or when he resists wearing his kippah. If he is approaching the teenage years (I assume he is not a teen because you used the term "playmates"), perhaps this is part of a general questioning of identity. In that case, continue to maintain a strong Jewish home life. Insist he wear a kippah when necessary, i.e., in Hebrew school, at synagogue, for Friday night kiddush and other meals where blessings are recited, etc., but don't make an issue of it otherwise. Remind a younger child why one's head is covered (to recall that there is Someone higher than ourselves). And lastly, remind yourself that the wearing of a kippah is only a custom, however ancient.

Dear Nana: This year we bought way too much matzah on Passover. In fact, here in May, we are still eating it. When can we stop living on the stuff? Is it permissible to throw out the

stuff or do we need to bury it or what? Sick of Matzah in Monmouth Junction.

Dear Sick: Bubbeleh. Yes, of course, you can throw out matzah after Passover. But, why not save it for next year when it will taste even better.

Readers who have questions for Nana can write to her c/o Hakol, Congregation B'Nai Tikvah, 1001 Finnigans Lane, North Brunswick, NJ 08902.

DAY & NIGHT

WE'RE WORKING FOR YOU!



908/940-0404

H

oping people feel that getting home is the goal of every ERA salesperson is one thing. That's why we're part of the ERA Real Estate Online network. A totally interactive and convenient Web-based home buying system. ERA Real Estate Online gives our buyers complete property information when they want it and when they want it. 24 hours a day. It's simple. Just call our toll-free number from any land-line phone. If you have the Internet



access to our Web site, enter their zip code and you'll have a complete property description. If you don't have a specific property number, you follow the instructions and you can search our entire listing database by price, property and location. When you find the home you'd like to buy, we'll direct connect you to the ERA sales agent who specializes in marketing that home. It's fast, our own way we're working for you!



ERA® CROSS COUNTY REALTY
PHYLLIS & ED ROSEN

Kendall Park Shopping Center
3580 Route 27
Kendall Park, NJ 08824
Office: 908-940-1300

Sellers! ERA Real Estate Online will help find more qualified buyers for your home.

Jordan Dive Centers, Inc.

**SOMERSET ADVENTURE SEEKERS
OCEAN IN MOTION**

Invites You & Your Family



*To Discover The Exciting
World of Scuba!*

INDOOR HEATED POOL W/CLASSROOM RIGHT AT POOL
CLASSES GIVEN 12 MONTHS/YEAR

- All Levels
of Certification

- Entry Level
Beginners

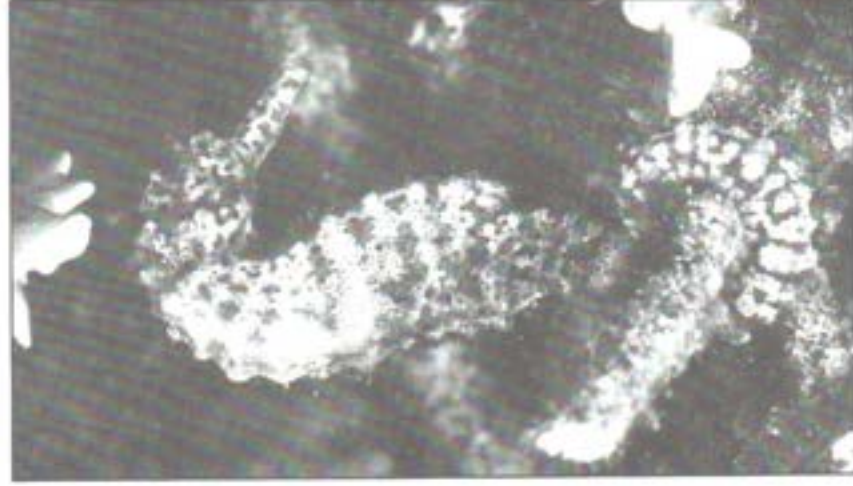
SPECIAL \$ 199.

FREE MASK &
SNORKEL!



3 HOUR DISCOVER SCUBA

- INCLUDES: \$15⁰⁰**
- Class Lecture
 - Pool Session
 - All Equipment Included



- Dance with the Dolphins
- Enjoy Spectacular Views
- Lifetime Hobby
- Never Too Old To Enjoy Underwater World



JORDAN'S DIVE CENTERS, INC.
185 CEDAR GROVE LANE
SOMERSET, NJ 08873 (908)469-9393

THE ULTIMATE SPECIALTY SHOP (908) 548-2998
OFFERING COMPLETE SERVICE FOR THE DISCERNING WOMAN

mili

OF METUCHEN

AUDREY R. KLINE
WENDI G. KLINE
JILL R. KLINE
418 MAIN STREET
METUCHEN, NEW JERSEY 08840

FEATURING:
• DRESSES, GOWNS
• COCKTAIL DRESSES
• SPORTSWEAR
• ACCESSORIES

Telephone 821-5656

STANLEY ZIMMERMAN, M.D.
INTERNAL MEDICINE

Office Hours
By Appointment

Lincoln Professional Building
2864 Highway 27
North Brunswick, N.J. 08902

(908) 297-3815

Morton Wumbrand & Company Inc.
Individual & Business Tax Preparation

39 Emerald Road
Kendall Park, New Jersey, 08824



Harvey J. Meade, DMD, FAGD
Kenneth A. Alspach, DMD
Dora Vilk-Shapiro, DMD

338 GEORGES ROAD
DAYTON, N.J. 08810
(908) 329-3113

(908) 422-0999

Eihanan Kaplan

PICTURE ALLEY

- Custom & Commercial Framing
- Gallery of Fine Posters & Prints

Mon., Tues., Wed., Sat. 10-6
Thur. & Fri. 10-6 Sun. 12-5

Marketplace Mall
Rt. # 27 & 518
Princeton, NJ 08540

IRVING VEROSLOFF

COUNSELLOR AT LAW
1254 HIGHWAY 27
NORTH BRUNSWICK, NEW JERSEY 08902

(201) 846-0223

(201) 297-4033

Hidden Lakes Pharmacy

2039 Route 27 Somerset, N.J.
(Country Plaza Shopping Center) 821-8500

Farrington Lake Pharmacy

1825 Rt. 130 No. Brunswick
297-7373

BANK AMERICARD — MASTER CARD
Charge Accounts Available — 3rd Party Prescription Plans Honored



MEDICAL AND SURGICAL FOOT CARE

DANIEL L. MARGOLIN, D.P.M., A.A.C.P.S.
PODIATRIST - SURGEON

SOMERSET PLAZA, SUITE 1000A
1553 Highway 27
Somerset, NJ 08873
Telephone (908) 828-8998

FORDS
428 New Brunswick Ave.
Fords, N.J. 08863
Telephone (908) 738-8135



ISRAEL AT 46

A Statistical Glimpse

	1960s	1970s	1980s	TODAY
PEOPLE				
Population	2,150,000	3,022,000	3,922,000	5,300,000
Number of cities with more than 5000 residents	53	76	97	120
Jews in Israel, as a percentage of world Jewry	13%	20%	25%	33%
Life expectancy: Females	-	73.2	76.0	78.5
Males	-	69.1	72.6	75.1
Infant mortality (per 1000 live births)	31.3	22.7	15.6	9.4
Pupils in school system	578,000	824,000	1,201,000	1,577,000
Percentage of the population with 13 years or more of formal schooling	9%	11.4%	18.7%	27.3%
Housing density (% of population)				
More than three persons per room	20.8%	7.8%	1.8%	1.3%
Less than one person per room	8.6%	18.2%	31.3%	40.5%
ECONOMY				
Gross National Product (3 = \$ US)	\$2.5 billion	\$6.3 billion	\$19.1 billion	\$54.3 billion
Exports of goods (in million of dollars)	\$206.6	\$788.3	\$2510.7	\$11,584.6
Industrial products	\$153.5	\$438.7	\$4955.0	\$11,033.7
Agricultural products	\$53.1	\$129.6	\$555.7	\$550.9
Tourists arriving	110,000	419,000	1,066,000	1,800,000
Production of electricity (in million of kilowatt / hours)	1,880	3,700	11,070	22,320
Private cars in Israel	34,000	148,000	430,000	923,000
Tonnage shipped by rail (tons)	1,848,000	3,619,000	5,326,000	8,403,000
Air passengers (tons)	223,000	1,051,000	2,847,000	4,488,000
Freight shipped by air (tons in year)	3520	30,700	105,800	206,570
Telephone subscribers	68,000	369,000	800,000	1,804,000

Jews	81.6%
Muslims	14.0%
Christians	2.7%
Druze and others	1.7%

Europe	55%
Africa	20%
Asia	16%
America and Oceania	8%
Unknown	1%

Cities	90.4%
Villages	3.8%
Moshavim	3.3%
Kibbutzim	2.5%

Branch	GDP	Labor Force	Exports*	Investment
Industry	25	23.1	36.9	21
Agriculture	4	3.5	2.7	2
Construction	9	6.5	-	40
Transportation & Communications	10	6.3	11.6	21
Commercial, Financial & Personal Services	23	31.8	28.8	6
Public Services	29	29.8	-	10

Source: Bank of Israel, Annual Report, 1992
* includes goods and services

Social Sciences	29%
Humanities	18%
Engineering and Architecture	14%
Physics, Math and Computers	12%
Medicine and Related Fields	7%
Biological Sciences	5%
Law	3%
Agriculture	2%

Theater	10.5%
Sports Competition	10.0%
Entertainment Show	11.3%
Museum	5.7%
Concert	3.6%

* at least once a month

State Budget, 1994: 542.6 billion (according to March 1994 exchange rate)

Israel Information Center, 1994
Statistics based on the Statistical Abstract of Israel, No. 44, 1993



The Personal Touch

NEEDLEWORK
DESIGNS • LESSONS • IDEAS

ANN RUTH ROSENZWEIG

(908) 249-9141

Jewelry & Gift Emporium
2223 Route 1 South
No. Brunswick, NJ 08902

C
R
C

- Select the Right College
- Prepare College Applications
- Learn Interview Techniques
- Secure Financial Aid

College Research Consultants

Specializing in College Admissions

1398 Axel Avenue
No. Brunswick, NJ 08902

David Mason, Ed. M.
(908) 247-1543



SPECIALIZING IN WATER HEATERS
KITCHEN & BATH REMODELING
APPLIANCE HOOKUPS

PARK ACRES PLUMBING & HEATING

INSTALLATIONS AND REPAIR

HAROLD SMALL
LIC. NO. 5648

15 PAUL AVE.
KENDALL PARK, N.J. 08824
(908) 297-7538



By Appointment

DR. STEVEN B. DICKERT

CHIROPRACTOR

58 Wetherhill Way
(Corner Georges Road)
Dayton, N.J. 08810
(908) 329-2255

176 Hart Boulevard
(Corner Forest Avenue)
Staten Island, N.Y. 10301
(718) 981-4900

412 Halsey Road
North Brunswick, NJ 08902

(908) 297-1387
CIS: 72651,413

SAMA-Soft Consulting, Inc.

Solution Software

Computer Consulting
Payroll Processing
Custom Programming

Alan Berger

Member ICCA



Dayton Park Pharmacy

DAVID N. FRANKEL R.P.

365 GEORGES ROAD
DAYTON, NJ 08810

(908) 329-2626
9-2

DAVID H. OFFENBERG
President

908-972-8400
609-987-1158
908-972-1469 (FAX)



Allister Business Systems inc.

COPIERS • FACSIMILE
SALES • SERVICE • SUPPLIES

704 Ginesi Drive, Morganville, New Jersey 07751

American Association of
Orthodontists



GLENN D. GOLDSTEIN, D.M.D.

NJ Specialty License # 3196

JOHN D. HIRCE, D.M.D., M.S.D.

NJ Specialty License # 2875

PRACTICE LIMITED TO ORTHODONTICS

1527 Route 27 • Suite 2200 • Somerset, NJ 08873 • (908) 249-6800

CONGREGATION B'NAI TIKVAH

Rabbi Andrew Warmflash
Cantor Dov Goldberg

Board of Directors

President	Jack Mailman (daytime only) (718-761-1800)
VP Administration	Jeff Schwartz (297-6365)
VP School & Youth	Alan Kane (418-1913)
VP Ways & Means	Alan Berger (297-1387)
VP Membership	Eill Greenberg (297-6953)
Fincl. Secretary	Marc Binder (274-2797)
Recrd. Secretary	Meryl Heit (297-6284)
Treasurer	Marc Dillman (821-7392)
Asst. Treasurer	Mark Kasdin (274-2897)

Trustees:

Cheryl Asnis	(297-5379)
Elliott Danto	(297-6175)
Mark Cohen	(821-5917)
Larry Cohen	HaKol, Kadima, USY (821-4376)
Carol Goldin	Ritual Committee (297-7607)
Larry Kaufman	Community Education (422-0687)
Bette Koffler	House & Grounds (329-6518)
Sam Rosenzweig	Publicity (249-9141)
Ken Salzinger	Constitution (329-6487)
Sydell Spinner	United Synagogue Liason (297-6891)
Gary Tinkel	Outreach (545-1135)
	Past President

FOOD FOR THOUGHT

The man who acts "humble" in order to win praise is guilty of the lowest form of pride.

-- Nachman of Bratslav

The synagogue does not attest to the kashrut of any of its advertisers.

HaKol -- The Voice

Editors: Gigi and Mark Cohen
(908) 821-5917

Advertising: Gale Dillman
(908) 821-7392

To submit articles:

** Submissions for any Hakol must be in the Synagogue office by the first of the previous month. For instance, the **June deadline is May 1**. Please note that the last HaKol of the fiscal year will be the **June edition**.

THE DEADLINE FOR THE SEPTEMBER 1994 EDITION OF HAKOL, WITHOUT EXCEPTION, IS FRIDAY, JULY 22nd. This is due to Rosh Hashanah which begins Monday evening, September 5th.

** We welcome all written contributions. Any submissions which the editors find inappropriate, will be turned over to the Rabbi and/or President for final approval.

** Suggestions for improving this monthly bulletin are also welcome.

DAILY MINYON SCHEDULE

Friday (Shabbat)	8:00 pm
Saturday (Shabbat)	9:30 am
Sunday Mornings	9:00 am
(bring your tefillin, learners welcome!)	
Sunday-Thursday	7:30 pm
Thursday Mornings	7:00 am

COMPLETE FAMILY HEALTH CARE

Dr. Bradley Kline

Board Certified Family Practitioner

Associated with Princeton Medical Center
Many Insurance Plans and H.M.O.'s welcome

APPOINTMENTS: Days, evenings, and Saturdays-
24 hr emergency coverage

4105 ROUTE ONE SO.,-SO. BRUNSWICK
(Wynwood jug-handle betw. Raymond & New Roads)
(Across the street from Channel, Jamesway and Grand Union Mall)

Call for appointments at 329-8585

HOURS: Mon., Tues. & Wed. 9am-9pm, Thurs. 1pm-9pm,
Fri. 9am-7pm, Sat. 10:00am-2pm

MAY I PLANT MY SIGN IN YOUR YARD?

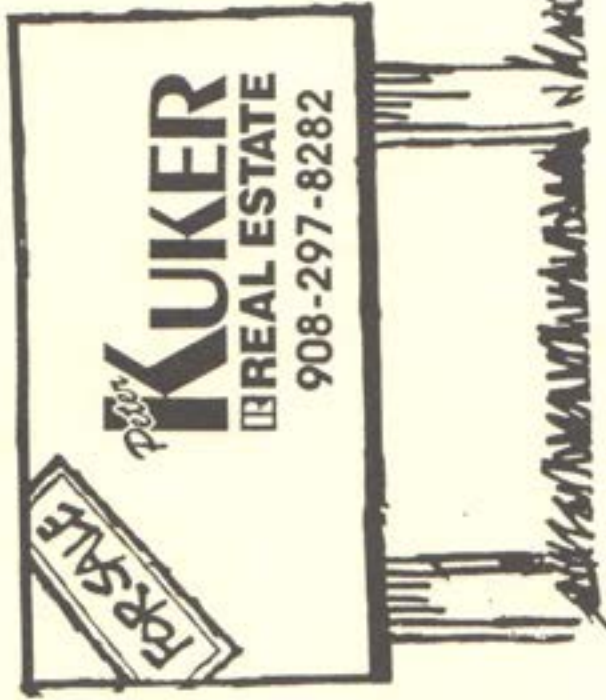
Any time of the year is perfect for planting my "For Sale" sign in your yard. That's because I work hard, year 'round, to keep my customers happy with my service!

So, if you're planning to sell your home, please give me a call. Not only will I explain how I can help sell your home, but I'll listen to your needs, wants and desires. Then we can work to fulfill your real estate goals!

call today...

**PETER KUKER
REAL ESTATE**

297-8282



Congregation B'nai Tikvah

JEWISH COMMUNITY CENTER OF NORTH & SOUTH BRUNSWICK
1001 FINNEGANS LANE, NORTH BRUNSWICK, N.J. 08902

RABBI ANDREW WARMFLASH Synagogue Office 908-297-0696 • Religious School 908-297-0993 Nursery School 908-297-0295 HAZIAN DOV GOLDBERG



affiliated with



PERMIT # 15
KENDALL PARK, N.J.
08824
NON-PROFIT ORG.