

**Our Mission: To foster a vibrant egalitarian Jewish community founded in the religious customs and traditions of Conservative Judaism; offering excellent Jewish education and community activities for all ages with commitment to Israel and Jewish communities throughout the world.**



## February 1<sup>st</sup>, 2<sup>nd</sup>, & 3<sup>rd</sup>

<b>Sunday, February, 3<sup>rd</sup></b>	<b>World Wide Wrap</b>
<b>Monday, 4<sup>th</sup></b>	<b>Board of Directors Meeting</b>
<b>Wednesday, 6<sup>th</sup></b>	<b>Lunch with Rabbi</b>
<b>Friday, 8<sup>th</sup></b>	<b>Birthday Shabbat</b>
<b>Saturday, 9<sup>th</sup></b>	<b>Lunch &amp; Learn</b>
	<b>Passover Poker</b>
	<b>KADIMA Regional Dance</b>
<b>Sunday, 10<sup>th</sup></b>	<b>Israel Presentation</b>
	<b>KADIMA Mini Golf</b>
<b>Monday, 11<sup>th</sup></b>	<b>Sisterhood Board</b>
<b>Tuesday, 12<sup>th</sup></b>	<b>Book Club</b>
	<b>USY Bubble Wrap</b>
<b>Wednesday, 13<sup>th</sup></b>	<b>Lunch with Rabbi</b>
<b>Sunday, 17<sup>th</sup></b>	<b>Men's Club</b>
<b>Wednesday, 20<sup>th</sup></b>	<b>Lunch with Rabbi</b>
<b>Saturday, 23<sup>rd</sup></b>	<b>KADIMA Shabbat</b>
	<b>First Round with Rabbi</b>
<b>Monday, 25<sup>th</sup></b>	<b>Ritual Committee</b>
<b>Wednesday, 27<sup>th</sup></b>	<b>Lunch with Rabbi</b>
	<b>USY Event</b>

## From Rabbi Robert L. Wolkoff



I'm sitting now in the study hall, the *beit midrash*, of my kids' day school (Kushner). Surrounding me are dozens of voices, voices raised in heated discussion of Jewish law. Over here, an argument over exactly when to daven maariv (the evening prayers). When, exactly, is it "dark"? (Only Jews argue about the meaning of "dark.") Over there, a (loud) examination of ancient sacrificial practice (only Jews get excited about a ritual that hasn't been observed for 2,000 years). And right next to me, a young teacher, Rabbi Tzvi Sinensky, is leading a study session entitled: Who is the Messiah?

He briefly outlines three classic and contradictory images: 1) the messiah is a magical, angelic figure with supernatural abilities; 2) the messiah is a warrior/philosopher king; and 3) the messiah is a humble, compassionate figure who seeks to heal the wounds of the suffering.

After the session concludes, I ask Rabbi Sinensky what his motives were. Why talk about this particular topic? His answer is two-fold. First, in a materialistic and self-centered time, it is important for our young people to know that there is something bigger than themselves, and that they are a part of it. And second, that at a time when our children are constantly being told that they are not enough—not beautiful enough, not smart enough, not successful enough, not enough likes on their Instagram accounts—at such a time, they need to be reminded that they contain within themselves the seeds of the redemption of the whole world.

Exactly which messianic vision is most compelling is an interesting topic. And which message the children most readily take away with them from the study session is interesting as well. But to my mind, the truly important thing is that this conversation is happening at all. A group of young people is sitting together discussing the radical transformation of the world, as if it's the most natural thing one could think of.

On this particular day in America, exactly how many such conversations are taking place? We live in a country with 300+ million people. That's 3 with 8 zeroes. If there were 30 such conversations today—3 with one zero after it—I would be surprised.

This is the glorious thing about being Jewish, unique and deeply significant. The Prophets talk about our being the "saving remnant." We are, at our best, that small portion of humanity that retains the capacity to imagine a world transformed and, through that very imagining, unleashes the forces that *will* transform it.

I suspect the students did not fully grasp the import of what they were doing. Kids rarely do. I'm not convinced the teacher fully understood it either. He seemed much too modest to have recognized how profoundly important his spiritual leadership is. But I understood it perfectly. In this time of historic dysfunction, bitterness, and tension, I was privileged to see with my own eyes the fulfillment of the wisdom of the Talmudic master Resh Lakish, who said in the name of Rabbi Judah the Prince. "The survival of the world depends solely on the breath of schoolchildren." (Shabbat 119b)

Baruch Hashem. Thank G-d. There *is* reason to hope,  
Rabbi Robert L. Wolkoff

**amazon**smile  
You shop. Amazon gives.

The synagogue earns up to 15% when you shop at **smile.amazon.com** (not amazon.com). Click under the search bar where it says: "Supporting:" Enter to search for: "Congregation B'nai Tikvah" and select the one that indicates: "**N Brunswick NJ**"

## From Cantor Rockman

### What's Happening?



Spring is around the corner. Baseball spring training is beginning and the culmination of our Religious School year is coming into focus. I've enjoyed an amazing journey this year and it is my hope that we all will witness the development of our students over the next 4 months. Each of our classes will be presenting projects, leading select services, and celebrating special landmarks in their Jewish development.

Here are some of our highlights for the coming months. Please mark your calendars; we really would like you to share these experiences.

**February** begins with a super event. In addition to the USY convention that we are hosting, our Men's Club will host our Dalet and Chai School students at the World Wide Wrap on February 3<sup>rd</sup>. Our students have begun to learn our ancient binding practice.

On **March 8 & 9**, we will join with USY for a spirited Shabbat, filled with Ruach, energy, and teenagers being teenagers. We get to recall and relive our youth vicariously through our USYers. Our kids will show Rabbi Wolkoff and me how much they've learned through their experiences and, maybe, show us a few new tricks! We all will be carried away by their Ruach and enthusiasm.

The following Friday night, **March 15<sup>th</sup>**, our Gimmel students will lead our Kabbalat Shabbat service. The service will be preceded by a Shabbat Dinner at 6:30pm. The entire congregation is invited to join us for the dinner and service. Details and prices for the dinner will be available very soon.

Costumes required! A very busy March continues with Purim. On Sunday morning **March 17<sup>th</sup>** at 10am we will be treated to our Purim Shpiel followed by our Purim Carnival. The shpiel will once again be produced and directed by Marty Angstreich and will be based on the hit movie "**The Greatest**

**Showman.**" The holiday begins on Wednesday evening March 20<sup>th</sup>. Our celebration will continue with the Megillah reading and highlights from our shpiel, "The Greatest Showman."

Our busy month continues with our Bet Shabbat Dinner and Service on **March 29<sup>th</sup>**. Once again, your invitation and details are on the way.

We conclude our busy month of **March** with the return of the Avi Zukerman Yad making program. Avi is a talented artist and engaging teacher. This event is designed especially for our pre-b'nai mitzvah students. This year any congregant who would like to participate and create a personal Torah reader's Yad or would like to create a Yad as a gift, is welcome to participate. There will be a charge for this program.

April and May will be crazy busy, too! Next month, I will share the details of our upcoming events; for now, here is a list:

Friday, April 5<sup>th</sup>, Aleph Consecration and Dinner  
 Sunday April 14<sup>th</sup>, School-Wide Model Seder  
 Sunday April 28<sup>th</sup>, Dalet Genealogy Showcase  
 Wednesday, May 1<sup>st</sup> School-Wide JNF Israel program  
 Wednesday, May 8<sup>th</sup>, The Falafel Ball—  
 A Community Celebration of Yom Haatzmaut  
 Friday, May 10<sup>th</sup>, Dalet Creative Friday Night Service  
 Sunday, May 12<sup>th</sup>, Celebrity Gimmel Mock Wedding

Becoming more connected to God, Israel, and the Jewish people through our actions always is my goal.

Ivdo et Hashem b'Simcha—Worship the Lord with Gladness.

Cantor Bruce Rockman

## From our President Adrienne Ross

### Not Just About The Trees



When I was growing up, I often wondered how we could celebrate the “Birth of the Trees” (Tu B’Shevat) in the dead of winter. While I looked outside at snow-covered yards, I faithfully would bring a dime to each class of Hebrew School to buy a leaf to purchase a tree in Israel. Our Israeli Hebrew School teachers told us that “completing” trees could bring an early spring. Sounded as good as the Groundhog! While I’m not sure any of us believed this, it gave us something to look forward to since, when we completed our trees, we would have a “fruit party.” I remember getting our goodie bags of dried fruit (dates, figs, raisins) to celebrate the holiday.

Today, I am much more realistic about the timing of Tu B’Shevat relative to winters in North America. (I also don’t necessarily believe in the Groundhog.) I do think that Tu B’Shevat is much more than the physical trees but also a chance for a “mid-year check-up” on the emotional roots/trees we build and on connections to our Jewish community and the greater Jewish community. Are we building strong foundations/roots for our hearts and souls? Are we branching out beyond ourselves? Can we strengthen our roots by “fertilizing” them?

This month, we will have opportunities to strengthen our roots, fertilize the soil, and look forward to “blooms.” This month begins at CBT with our hosting the USY Mid-Winter Convention. Whether you are serving as a host or not, come join us at services and see our “seedlings in bloom” as they

lead us in prayer and song. Their spirit and energy will be your own fertilizer.

For those able to join the Rabbi on Wednesdays at lunch, you’ll have the ability to discuss this week’s Parasha with others on this week’s Parsha and expand your mind. Sometimes, the discussion will veer to a Jewish view on contemporary issues today. Making us think fuels the mind and soul.

Sisterhood’s Annual Passover Poker (yes, we know it’s not Passover!) provides a great opportunity to “branch out” and meet your fellow congregants. It’s an evening of fun, schmoozing, noshing, and building connections. Join us!

As we close out the month, for those of you with those fond memories of buying trees in Hebrew School (and those of you who don’t), the JNF Breakfast is on March 3<sup>rd</sup>. CBT is proud to be a co-sponsor of this event, further establishing our relationship with the State of Israel and creating strong roots to build on. There is no cost to attend (although donations to JNF will be welcome). The program promises to be stimulating and truly the opportunity to feed your soul.

Congregation Bnai Tikvah only can be strong when we have strong roots to build on. Your participation strengthens the roots and expands our reach, helping to create “blooms” in North Brunswick and beyond.

## HAKOL

The Newsletter of **Congregation B'nai Tikvah, JCC of North & South Brunswick** 1001 Finnegan's Lane, North Brunswick, NJ 08902

Published monthly, except July and August. Submissions are encouraged about events, group activities, and anything relevant to the Jewish community. Submissions, subject to available space and editorial constraints, are due by the 15th of the preceding month. Please address all articles and correspondence to [Hakol@bnaitikvah.org](mailto:Hakol@bnaitikvah.org) and try to avoid use of PDF files. Current issues are emailed via the CBT Newsletter. Archives can be found at [bnaitikvah.org/hakol](http://bnaitikvah.org/hakol). Editors: Gary Bergman, Ann Gold, Art Biderman, and Janet Weiss. Advertising: Meryl Harris.

**A man named Zev Steinberg felt the need to write this touching poem, which he dedicated to the baby who was to be named at the Tree of Life Synagogue in Pittsburgh, PA on Shabbat morning, October 27, 2018.**

## A Message for the Baby Whose Bris It Was at the Pittsburgh Synagogue

Little boy, what's your name – do you have one?  
Sweet baby, just eight days, what should we call you?

I have heard the sacred circumcision postponed for jaundiced yellow, but never before for bloodshed red.

Is your name [Shalom](#)? We long for peace in this troubled world. I hope you are Shalom.

Is your name [Nachum](#)? Oh, how we need to be comforted in our grief. I hope you are Nachum.

Is your name [Raphael](#)? Our broken hearts and bleeding souls need healing. I hope you are Raphael.

You should have been carried high into the congregation on Shabbat morning – passed from loving hands to loving hands – on a cushioned pillow to receive your Jewish name.

Instead your elders fell and were carried out on stretchers in plastic bags. Their names on tags.

Is your name [Moshe](#)? Our unbearable anguish and rage demands justice. I hope you are Moshe.

Is your name [Ariel](#)? We need the ferocious strength of lions to protect our people. I hope you are Ariel.

Is your name [Barak](#)? We need courageous warriors to vanquish our enemies. I hope you are Barak.

The blood on Shabbat morning was supposed to be covenantal not sacrilegious, sacramental not sacrificial, sacred not unholy. The tears were supposed to be of boundless joy not bottomless sorrow.

The cries were supposed to be “mazel tov” not the mourner's kaddish.

Is your name [Simcha](#)? We need an end to sadness by bringing joy into our world. I hope you are Simcha.

Is your name [Yaron](#)? We need an end to mourning by bringing song into our lives. I hope you are Yaron.

Is your name [Matan](#)? We need the gift of children who will bring a better tomorrow. I hope you are Matan.

So little boy, what's your name? Take them all if you will. Take a thousand names.

Be peace and Comfort and Healing. Be Justice and Strength and Courage. Be Joy and Song and a Gift to the world. Be every good name and every good thing.

And, Sweet baby, take one more name if you will – because I hope you will be blessed with a long, blissful, beautiful and meaningful life... I hope you are [Chaim](#).

### ENJOY LUNCH & LEARN WEDNESDAYS, 12 - 2PM

Enjoy three of life's pleasures: learning, discussing, and eating at CBT.

No learning on an empty stomach, right? So... we begin with a Classical Caterers lunch: a hot entrée, salad, and cookies (\$12).

Rabbi Wolkoff starts us off with an explanation of the week's parasha, or perspective on a holiday, or theories on an issue (based on a terrific handout).

Examples: Chanukah, miracle or power grab? Contemporary parallels to 2500 BCE. Joseph, hero and/or manipulator?

We, the 6 - 13 “students,” jump in with questions, comments, our own take on the subject.

Interested? Call the office (732-297-0696) or email [office@bnaitikvah.org](mailto:office@bnaitikvah.org) to confirm that you'll be joining us.



CONGREGATION B'NAI TIKVAH

**MEN'S CLUB**

SERVING THE SYNAGOGUE AND THE COMMUNITY SINCE 1983



Craig Cohen



Josh Oliver

## World Wide Wrap XIX

### Sunday, February 3<sup>rd</sup>, 9:00 am



Conservative Jews from around the world will celebrate the mitzvah of Tefillin at morning minyan, joining thousands of others in the ninth annual "World Wide Wrap," sponsored by the Federation of Jewish Men's Clubs.

## Annual CBT Gala Event

### Saturday, March 30<sup>th</sup>

Save the Date...

Book the Babysitter...

Find your Dancing Shoes.

It's going to be a great night...  
as always!

Let's Celebrate Our  
Rabbi & Rebbitzin  
for all they have done for the  
Jewish Community,  
especially Ours!

- Attend the Gala
- Place an ad or "wellwisher"
- Sell an ad or provide a Silent Auction item







Lori Sookerman



Shelly Wistreich

**Saturday, February 9th** - Bring your friends and join us for Passover Poker.  
Open to the entire community. See our ad in this edition of Hakol. RSVP to [rakoenick@gmail.com](mailto:rakoenick@gmail.com).

**Wednesday, March 27th** - In conjunction with the East Brunswick Jewish Center, we'll welcome Rabbi Deborah R. Prinz, author of "On the Chocolate Trail," a delicious adventure connecting Jews, religions, travel, rituals, and recipes to the magic of cacao. This program is open to the entire community. See our flyer on page 9 and on the website.

### Mazel Tosses

Enhance the simcha of your child's special day by having Sisterhood provide these bags of soft candy in order to sweeten the day. Also great for an aufruf. Order your Mitzvah Baskets and Mazel Tosses at [ww.bnaitikvah.org](http://ww.bnaitikvah.org) at least one month before your mitzvah.

### Torah Fund

The new pins are available with a \$180-or-above pledge. We'll love welcoming you as a Torah Fund benefactor, helping the Women's League for Conservative Judaism to support the Jewish Theological Seminary, its teachers, Cantors, and Rabbis.

Contact: Ann Rosenzweig 732-249-9141  
[Anndyapt@optimum.net](mailto:Anndyapt@optimum.net)

### Gift Shop (Closed on February 3rd)

Store Hours: Sunday 9 am - 12 pm  
February Special: 20% off all jewelry  
Take an additional 50% off all clearance items  
Serena Blackin. 732-390-9515 or 848-702-3445

### Mitzvah Baskets

Help us decorate the bima with nonperishable food baskets. We also deliver baskets to other synagogues. Tell your friends about this service. Contact: Teresa Samtur 732-821-8163 or [msamtur@comcast.net](mailto:msamtur@comcast.net)

### Membership

Please visit [bnaitikvah.org/sismember](http://bnaitikvah.org/sismember) and discover the joy of getting involved in our circle. Sisterhood will love welcoming you. Lisa Seidman [Lssnj9@verizon.net](mailto:Lssnj9@verizon.net)

## Daily Schedule of Services

Sunday	9:00 am & 7:30 pm
Monday	7:30 pm
Tuesday	7:30 pm
Wednesday	7:30 pm
Thursday	7:30 am & 7:30 pm
Friday	8:00 pm
Saturday	9:30 am

## Inquiring Minds Need To Know:

**Illness:** If someone you know is hospitalized or ill at home, send a note in confidence to: [bikur@bnaitikvah.org](mailto:bikur@bnaitikvah.org) The committee will confer with Rabbi Wolkoff and provide whatever assistance they can.

**Birth:** We love to send these announcements of Mazel Tov with details of name, weight, and date of birth. Also provide names of the parents and siblings. A picture would be nice if the baby agrees to pose.

***BACK BY POPULAR DEMAND!!***

# “Passover Poker”

**Same game — great food**

**...and it's not Passover, either!**



Passover Poker  
In February??  
Oy Vey!!

***Come and Play***

**Saturday night, February 9<sup>th</sup>**

**Check-in at 7:40PM\***

(Snow Date: February 16<sup>th</sup>)

No need to know how to play poker to play Passover Poker.

It's an easy, fast-paced game of trumps, in which you play each hand against a different pair of players.

***Grab your spouse or a friend and join us for fun, noshes, and drinks while socializing with all who attend.***

***Open to the entire community!  
Bring your friends for a great time!***

(21 and over, please)

**Advance Couvert \$18.00 per person**

Couvert at the door will be \$25.00 per person

**\*Please arrive on time. Play begins at 7:55pm**

-----  
Please send check by **Feb. 4, 2019**, to Ruth Anne Koenick, 1001 Finnegans Lane, North Brunswick, NJ 08902

Names of persons attending: \_\_\_\_\_

Phone # \_\_\_\_\_ E-mail \_\_\_\_\_

Enclosed is my check (\$18.00 per person) in the amount of \$ \_\_\_\_\_

Requested Foursome Pairing: \_\_\_\_\_

[ ] Check here if you need a partner or foursome pairing

**Please make checks payable to: Congregation B'nai Tikvah Sisterhood**



## B'nai Tikvah Tribute Book Ad Form

Ad Type	Width & Height	Donation
Back Cover (full color)	8" x 10.5"	\$3,600 Includes: two tickets to Gala
Inside front or back cover (full color)	8" x 10.5"	\$2,700 Includes: two tickets to Gala
Full Page	8" x 10.5"	\$800
Half Page	8" x 5-1/8"	\$450
Quarter Page	3-7/8" x 5-3/4"	\$360
Business Card	3-7/8" x 2-3/8"	\$180
Well Wisher Plus	Up to 50 words	\$72
Well Wisher	Up to 20 words	\$36

All ads are in black and white unless otherwise noted

Name: \_\_\_\_\_

Business Name (if applicable): \_\_\_\_\_

Address: \_\_\_\_\_

City: \_\_\_\_\_ State: \_\_\_\_\_ Zip: \_\_\_\_\_

Phone: \_\_\_\_\_ Email: \_\_\_\_\_

Ad Type(s) Desired: \_\_\_\_\_

Total Amount (enclose a check made payable to Congregation B'nai Tikvah: \$ \_\_\_\_\_)

**Please send completed form to:**

Congregation B'nai Tikvah • Attn: Fundraising Chair  
1001 Finnigans Lane • North Brunswick, NJ 08902

Send camera ready art (PDF preferred or Word doc) to [ads@bnaitikvah.org](mailto:ads@bnaitikvah.org)

**Deadline for artwork submission and payment is March 3, 2019**

Questions? Please call Steve Juro at 732 343-4088 (mobile)

For more information, please visit [www.bnaitikvah.org/gala](http://www.bnaitikvah.org/gala)

**Thank You for Your Support!**

Tax-exempt organization; federal ID #22-2249762

Hope to see you on March 30<sup>th</sup> to honor our Rabbi's  
40 years of service to the Jewish community



**KITCHENS**  
**3.5%**  
**Sales Tax**  
**NEW BRUNSWICK**  
**ONLY**

# The Aaron Kitchen Design Gallery

Part of a spectacular 6,000 sq. ft. Kitchen & Bath Showroom

- ★ Interactive Working Displays
- ★ Computerized Design Renderings
- ★ Professional Design Consultants



Where Style & Innovation Exceed Dreams & Expectations.

**Free Kitchen Sink**

with the purchase of a complete kitchen.

Promo Code: *HAKOL*

**877-602-2766**

10 Industrial Drive & Terminal Road • New Brunswick

Other Bath Design Gallery locations: Flemington & Freehold

**Visit us at [aaronkbgallery.com](http://aaronkbgallery.com)**

# On the *Chocolate* Trail

with **Rabbi Deborah Prinz**

## Wednesday, March 27, 7:45PM

**The Sisterhoods of Congregation B'nai Tikvah of North Brunswick and the East Brunswick Jewish Center invite you to join us for dessert, wine, and chocolate!**

Rabbi Deborah Prinz will speak about "**Jews On the Chocolate Trail**," a delectable journey through the Jewish history of chocolate. Rabbi Prinz draws from her world travels on the trail of chocolate to enchant chocoholics everywhere as she unwraps the role of religions in the trade, retail, and manufacture of chocolate since it was first introduced to Europeans. Explore the surprising connections to chocolate in this gastronomic adventure!

**Copies of *On the Chocolate Trail*, 2<sup>nd</sup> edition, will be available for purchase & signing by Rabbi Prinz.**

**Event Location: Congregation B'nai Tikvah**

**Open to the Community!** (over 21 years old)

**RSVP: Lynn Biderman at [r.lynn.biderman@gmail.com](mailto:r.lynn.biderman@gmail.com)**

**CBT & EBJC Sisterhood Members: \$10.00, Non-members: \$18.00**

**At the door: Sisterhood members \$15.00, Non-members: \$20.00**



**I WANT  
YOU**

to help house  
our USYers for  
Mid-Winter  
Convention  
February 1-3

There's not much to it:

- Driving to shul
- A place to sleep
- A few snacks (no meals needed)

Sign up TODAY at [bnaitikvah.org/usy](http://bnaitikvah.org/usy) or contact  
Serena Blackin: [serena@blackin.org](mailto:serena@blackin.org), 732-390-9515  
or Steve Juro: [sjuro@verizon.net](mailto:sjuro@verizon.net) - 732-343-4088

*Supportive and compassionate care,  
sensitive to your personal and spiritual needs.*

Low Nurse to Patient Ratio  
Home Health Aide support  
for Family  
Complementary Chicken Soup  
Music & Massage Therapy



**STEIN HOSPICE**  
*at The Oscar and Ella Wilf Campus for Senior Living*

(732)227-1212

[www.wilfcampus.org](http://www.wilfcampus.org)

*Accredited by the  
National Institute for Jewish Hospice*





RSVP  
REQUIRED

DIETARY  
LAWS  
OBSERVED

# JEWISH BREAKFAST NATIONAL FOR FUND ISRAEL

**"Making the Desert Bloom - Fulfilling His Grandfather's Dream"**

**FEATURING GUEST SPEAKERS**



**ALON BEN-GURION**

Grandson of David Ben-Gurion

Alon Ben-Gurion dedicates his life to actively promoting development in the Negev, working to make the region bloom and realize the dream of his grandfather, David Ben-Gurion. Ben-Gurion has built an extensive network through his years as a hospitality consultant managing hotels worldwide, which has given him the tools to help fulfill the shared vision of Jewish National Fund and David Ben-Gurion.

**EVENT CO-CHAIRS**  
Alyson and Michael Chananie  
Dr. Beth and Jules Cohn  
Rachel Cohen  
Anne and Adrian Kroll  
Barbra and Bruce London  
Allison and David Nagelberg  
Phyllis Solomon  
Dr. Naomi Vilko and  
Dr. Sidney Goldfarb



**RUSSELL F. ROBINSON**

CEO, Jewish National Fund

As Chief Executive Officer, Russell F. Robinson has succeeded in making Jewish National Fund one of the top-rated charities in the United States, and the leading organization for the land and people of Israel. He has been ranked 26th on the *Jerusalem Post's* list of the world's 50 most influential Jews.

**CONGREGATION B'NAI  
TIKVAH LEADERSHIP**  
Rabbi Robert Wolkoff  
Cantor Bruce Rockman

**More Information**  
Anna Millstein  
Senior Campaign  
Executive  
Central NJ  
amillstein@jnf.org  
973.593.0095 x826

**Sunday, March 3, 2019**

10:30 am Program  
Please arrive at 10:00 am for breakfast and registration  
**RSVP by February 25 at [jnf.org/gardenstate](http://jnf.org/gardenstate)**

**Congregation B'nai Tikvah**  
1001 Finnegans Lane, North Brunswick, NJ 08902

Please note that for security purposes, JNF reserves the right to check IDs and all bags are subject to search. We recommend that you do not bring large backpacks to events.

**No Charge  
to Attend**  
  
**Donations  
Appreciated**



**JEWISH  
NATIONAL  
FUND**

*Your Voice in Israel*

[jnf.org](http://jnf.org)  
800.JNF.0099



## 2018 NEEDY FAMILY PROGRAM

We recently completed our 17<sup>th</sup> successful year helping those in need for the holidays. The Needy Family Program provides basic necessities to indigent families: winter coats, boots, clothing, blankets, pillows, dishes, silverware, and the list goes on and on.



Janice Baer

Over the years, we have helped more than 120 families begin their year with the basic necessities that we take for granted.

The results of our 2018 efforts:

- A mother and 2 small children have a bed to sleep on and no longer are sleeping on the floor.
- A family now has a table and chairs so they no longer need to eat their meals on their laps or on the floor.
- A family now has dressers to put their clothes in, instead of shopping bags.
- Children now have toys to play with.
- Six families -29 children and adults-- are entering the winter months with warm coats, clothes, blankets, etc

I delivered 2 carloads of gifts to a family. The mother was overwhelmed and cried, saying that she never would have been able to do this for her children. She was so amazed by the amount of clothing, toiletries, and household items they received. She couldn't have been more appreciative.

This is the result of the generosity of 56-plus congregant families and their extended circle of family and friends. Our program has grown over the years in the areas of congregational involvement, enthusiasm and concern for the less fortunate.

What touches me the most besides helping families in need is the increased enthusiasm and intensity our B'nai Tikvah community demonstrated. We fully understand the meaning of Tikun Olam. Our congregants purchased the assigned items as if they were buying for their own children and grandchildren. I was often contacted requesting additional

information so they could buy exactly what the family needed and wanted. People who were asked to donate one item would often purchase additional items they felt the family needed such as hats and gloves. We took these families on as if they were our own families. This is what makes our B'nai Tikvah community so special.

Every year Doris Cruz, the school social worker I have been working with since the inception of this program, explains to parents that the gifts are from B'nai Tikvah. This year, I asked Doris to meet with the children at school. As the rise of anti-Semitism grows, I felt it important for the children to understand where their gifts came from and the kindness of strangers who practice a different religion.

I thank Cantor Rockman and the Religious School for running a very successful hygiene-gifts drive. It is an important lesson to teach our children Tikun Olam and help them understand that there are families who need to make choices between purchasing food or purchasing soap.

I thank my husband Art for his support over the years of the Needy Family Program and helping me schlep and deliver the gifts to the school.

I also thank my partner in crime, Jennifer Shapiro who has been by my side since the inception of this program; helping me shop, organize and pull the family gifts together. Most of all, I thank you for your love and devotion to the program and our friendship.

I will close again with a quote from Doris Cruz, the social worker, as this sums up our Mitzvah:

*"Thanks for building bridges among cultures, religions and socio economic status. Your kindness is a gift that will remain with these families forever."*

Thank you all for your continued support!  
I wish you and your families a Healthy and Happy New Year!

Janice Baer

### Atlas World Travel



Contact us for your next vacation. Mention B'nai Tikvah and we will make an appropriate donation.

**Gloria Adlerman**  
President

317 Forsgate Drive

732-605-0262

### Do Not Throw It Away LLC



House Clean Outs  
Junk Removal  
Moving Managing

Andrew Cerame  
732-586-7525

Andrew@donothrowitaway.com  
donothrowitaway.com

Linda J. Fellen, Esq.

### **FELLEN & FELLEN, LLC** ATTORNEYS at LAW

21 Kilmer Drive  
Building 2, Suite G  
Morganville, NJ 07751

(732) 431-0473  
(732) 780-3533  
linda@fellenlaw.com  
fellenandfellen.com

## It's Your Party

*Your one stop Party People!*



- \*Custom Theme Centerpieces
- \*Backdrop Balloon Artistry
- \*Sign-in Books Boards
- \*Specialty Linen rentals
- \*Custom Invitations, Place Cards and Favors

*Preferred Vendor of*  
*Classical Caterers*  
**732-431-0099**

52 North Main Street, Rt 79 Marlboro, NJ 07746  
itsyourparty@optonline.net www.itsyourparty.biz

### *The Jewish Home for Exceptional Care*

As a not-for-profit senior community, we are committed to caring for the elderly in a way that respects and celebrates Jewish tradition and values.



**STEIN ASSISTED LIVING**  
*at The Oscar and Ella Wilf Campus for Senior Living*

(732)568-1155  
[www.wilfcampus.org](http://www.wilfcampus.org)

350 DeMott Lane  
Somerset, NJ



(732) 329-2255

Fax : (732) 329-2228

**DR. STEVEN B. DICKERT**  
CHIROPRACTOR

58 Wetherhill Way  
(Corner Georges Road)  
Dayton, N.J. 08810

By Appointment

### *Academic Dermatology*

**Felix Urman M.D., FAAD**  
Board Certified Dermatology  
75 Veronica Ave  
Suite 205  
Somerset, NJ 08873

Ph 732-246-9900 Fax 732-246-9902







# Barry Dworkin

Sales and Leasing Consultant  
732-584-2897  
bdworkin@penskeautomotive.com

## Lexus of Bridgewater

P.O. Box 6000  
1550 Route 22 East  
Bridgewater, New Jersey 08807  
**732-271-4000**  
**Fax: 732-469-3792**  
www.lexusofbridgewater.com

### A PENSKE AUTOMOTIVE DEALERSHIP

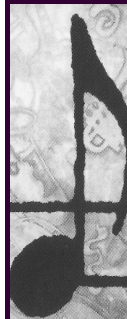
Present this ad and take delivery of any vehicle, new or used, and Lexus of Bridgewater will donate \$100 to B'nai Tikvah



### Joe Marino, Realtor

Licensed: Sales Associate

South Brunswick  
3530 Highway 27  
Kendall Park, NJ 08824  
732 297-0200  
Cell: 732 570-8518  
joemarino@weichert.com



### Spencer Brooks

Music Educator, Vocalist, Pianist, Arranger

201 South Second Avenue  
Unit 40  
Highland Park, NJ 08904  
980-358-3391  
smbrooks000@gmail.com



**SOUTH BRUNSWICK**  
3228 Route 27 • Kendall Park, NJ 08824  
(732) 297-0032 • (732) 297-0558 fax  
frontdeskjp@jerseypt.com

**PHYSICAL THERAPY**  
www.jerseypt.com

**MILLTOWN/EAST BRUNSWICK** • frontdeskeb@jerseypt.com  
180 Tices Lane • East Brunswick, NJ 08816 • (732) 418-0733 • (732) 418-7011 fax

**PRINCETON/PLAINSBORO** • frontdeskpp@jerseypt.com  
3 Liberty Street, Suite 1032 • Plainsboro, NJ 08536 • (609) 785-5386 • (609) 785-5388 fax

## Koch Monument

Established 1902

76 Johnson Avenue Tel: (201) 342-2185  
Hackensack, NJ 07601 Fax: (201) 342-0249  
www.kochmonument.com

Monuments - Duplicate Markers - Cemetery Lettering  
*5% discount for B'nai Tikvah Members*

We got **YOU** to look at this ad, now let **US** get customers finding **YOU**.

Meryl Harris: 732-297-0696

bnaitikvah.org/hakol-submissions



### LYNNE WEISSMARSHALL NOTARY PUBLIC

20 Indiancreek Road  
Matawan, NJ 07747  
732-310-5665

Also available in the synagogue office  
732-297-0696 Weissmar@optonline.net



RESTAURANT

Eat in or Take Out  
Catering for all occasions

Heritage Plaza  
228 Ryders Lane  
Milltown, NJ

Phone: 732-214-8900  
Fax: 732-214-0555

- Independent Living
- Assisted Living  
Secure Memory Care
- Nursing Care



LIONS GATE

Lifestyle. Care. Community. Tradition.

*Inspiring Wellness!*

- Rehabilitation Center:  
Post-Hospital Care  
Outpatient  
Open to Public

[www.lionsgateccrc.org](http://www.lionsgateccrc.org)

Plan Your Group Event at Lions Gate.  
Call 856-782-1200.



Legacy Circle of Givers

Marty Abschutz  
Arie Behar  
Bobby & Gary Bergman  
Bobbi Binder  
Sharon & Craig Cohen  
Gale & Marc Dillman  
Joyce & Gerald Fishelberg

Sam Fisher  
Arlene & Mitchell Frumkin  
Ann M. Gold  
Caryl & Danny Greenberg  
RuthAnne Koenick  
Jacqueline Master  
Allison & David Nagelberg

Shivi & Dan Nili  
Debra & Scott Rekant  
Rochelle & Marc Rosen  
Adrienne & Andy Ross  
Barry Safeer  
Marcia & Jeff Schwartz  
Brenda & Mark Sherman

Janet Weiss  
Lynne WeissMarshall  
Gary & Marcia Wesalo  
Rabbi Robert L. Wolkoff  
& Ruth-Ann Breitler  
Tammy & Keith Zimmerman-  
Plus other anonymous givers

# Mount Sinai Memorial Chapels, Inc.

NATIONALLY RECOGNIZED FOR SERVICE EXCELLENCE



PURSUIT OF EXCELLENCE  
AWARD WINNER



## Donations - December 17, 2018 - January 14, 2019

We gratefully acknowledge and thank the following contributors for their generous gifts.  
Your special donations make up a part of our synagogue's total income. We rely on you.

### **Rabbi's Discretionary Fund**

Mitchell & Amy Schreck, in memory of Marlene Rautenberg  
The Ostroff Family, in loving memory of Ina Segal  
Rita Katzovicz  
Howard & Diane Uniman, in loving memory of Shirley Uniman  
Howard & Dani Elson  
Doris Birkenthal, in loving memory of Ethel Yaros and Ethel Turetzky

### **Cantor's Discretionary Fund**

Mitchell & Amy Schreck, in memory of Marlene Rautenberg  
Lloyd Kornblatt, in loving memory of Dolores Kornblatt  
Lisa Tannenbaum, in honor of the birth of Arlene and Mitch  
Frumkin's grandson  
Joel & Joyce Gerbman, in loving memory of Dove Rockman  
Gale & Marc Dillman, in loving memory of Dove Rockman  
Mike Greenfield, in loving memory of Dove Rockman  
Joyce & Gerald Fishelberg, in loving memory of Dove Rockman  
Susan Keller, in loving memory of Muriel and Marvin Ostroff  
Elaine Brackup, in loving memory of Bessie Wattenberg  
LouAnne & John Wolf, in loving memory of Marvin Michaels  
Zimmerman Family, in loving memory of Dove Rockman  
Martin & Shirley Engel, in loving memory of Dove Rockman  
Barbara & Joe Plotnick, in loving memory of Hilda Snyder  
Barbara & Joe Plotnick, in loving memory of Dove Rockman  
Flora Cowen, in honor of the marriage of Rebecca Safeer to  
Jonathan Cohen

### **Bikur Cholim Fund**

Rita Katzovicz  
Herb Mars, in loving memory of Dove Rockman  
Herb Mars, in honor of the wedding of Rebecca Safeer to  
Jonathan Cohen  
Ruth Anne Koenick, in appreciation of Gale & Marc Dillman

### **Yahrzeit Donations**

Betty & Marvin Stark, in loving memory of Louis Golden  
Betty & Marvin Stark, in loving memory of Esther Stark  
Eddie Flateman, in loving memory of Maxine Flateman  
Richard & Melanie Margolis, in loving memory of Lillian Siegel  
Marsha & Avi Duvdevani, in loving memory of Yair Duvdevani  
Barry & Caren Dworkin, in loving memory of Robert A. Dworkin  
Stephen Breitkopf, in loving memory of Marilyn Breitkopf  
Streven Mark, in loving memory of Ronnie Mark  
The Platz and Lepowsky Families, in loving memory of  
Robert Lepowsky  
Ellen, Jerry and Alissa Platz, in loving memory of Leo Platz  
Michele & Dave Greenfield, in loving memory of Hyman Arougheti  
Leslie, Steven, Craig & Adam Dickert, in loving memory of  
Irving Margulies  
Phyllis AlRoy, in loving memory of Dorothy Delson  
Barry & Rena Lepinsky, in loving memory of Eileen Lepinsky  
Meryl & Scott Harris, in loving memory of Mickey Harris  
Irwin & Maxine Nudelman, in loving memory of Sol Nudelman  
Irwin & Maxine Nudelman, in loving memory of David August  
Michael Harkavy, in loving memory of Andrew Harkavy  
Alan, Terri, Ben, Stephen & Jordan Woller, in loving memory of  
Chester Gitlin  
Stacy & Scott Lewkowitz, in loving memory of Howard Barkan  
Irwin Kalet in loving memory of Henry Kalet

### **Youth Fund**

Rosalind Blinder, in honor of the marriage of Rebecca Safeer and  
Jonathan Cohen

### **Shabbat Luncheon Fund**

Mark & Brenda Sherman, in loving memory of Cy Rubin  
Gale & Marc Dillman, in honor of the birth of Irina Irgon's  
granddaughter  
Gale & Marc Dillman, in honor of the birth of Joyce & Gerald  
Fishelberg's, granddaughter  
Adrienne & Andy Ross, in honor of the birth of Irina Irgon's  
granddaughter  
Adrienne & Andy Ross, in honor of the birth of Mitch and Arlene  
Frumkin's grandson  
Cheryl & Myron Asnis, in loving memory of Gordon Asnis  
Alan & Gaye Feinberg, in loving memory of Marian Cohen  
Mark & Brenda Sherman, in loving memory of Dove Rockman  
Phyllis & Allen Pinsky, in honor of the marriage of Rebecca Safeer to  
Jonathan Cohen  
Ellyn & Harold Schneider, in appreciation of Gary Bergman  
Cheryl & Myron Asnis, in loving memory of Dove Rockman

### **Shomrei Tikvah Fund**

The Mars Family, in loving memory of Adrienne Mars

### **Passport to Israel Fund**

Shirley & Martin Engel, in loving memory of Marie Stone

### **General Fund**

Ben Gottesman & Linda Fellen, in loving memory of Seymour Rubin  
Howard Gases

### **Tzedakah Fund**

Meryl & Gordon Heit, in honor of the marriage of Rebecca Safeer  
to Jonathan Cohen

### **Trees for Israel**

Sandy Friedheim, in loving memory of David Friedheim and  
Dorothy Weiner  
Carol Eisenberg, in loving memory of Dove Rockman and  
Matilda Ratzman

### **Tikvah for Israel Fund**

Edward & Barbara Zinbarg Donor Advised Fund

### **Mark Kasdin Memorial Fund**

Maxine Kasdin, in loving memory of Jack Steck

### **Shiva Fund**

Jill Goldberg, in loving memory of Simon and Ettie Goldberg

### **Prayer/Chumash Fund**

Carol Eisenberg, in loving memory of Bernard Ratzman and  
Marvin Eisenberg

### **Family Shabbat Fund**

Bobbi & Marc Binder, in loving memory of Barney H. Cohn  
Ruth Anne Koenick, in appreciation of Bobbi & Marc Binder

## KADIMA-USY UPDATE

**February 1st-3rd**

USY Mid-Winter Convention

**February 9th**

Kadima Regional Event in East Windsor

**February 10th**

Kadima Chapter Event

**February 12th**

NSBUSY Event

**February 22nd-23rd**

USY Senior Shabbaton in East Brunswick

**February 23rd**

B'nai Tikvah Kadima Shabbat Services

**February 27th**

NSBUSY Basketball Tournament



Mazel Tov to our congregant Linda Fellen, who was sworn in by Mayor Brad Cohen as she becomes a new East Brunswick Municipal Court Judge. Proud husband Ben looks on.

## THANK YOU



to Gilda Gildenberg, Bill Greenberg, Risa Stolly, and Jay Scheuer for making birthday calls. A special "Thank You" to Phyllis Pinsky for doing beautiful calligraphy on B'nai Mitzvah and Baby Naming certificates, and to Marlene Buckwald for picking up challahs for Shabbat each week.

### Contributions

In honor of: \_\_\_\_\_

In memory of: \_\_\_\_\_

Occasion of: \_\_\_\_\_

**This donation is being made by:**

Name: \_\_\_\_\_

Address: \_\_\_\_\_

Telephone: \_\_\_\_\_

**Please send an acknowledgment to:**

Name: \_\_\_\_\_

Address: \_\_\_\_\_

City, State, Zip: \_\_\_\_\_

**Amount of your donation:**

\$18  \$36  \$54  \$72  \$118 Other \$\_\_\_\_\_

**Please Allocate Donations to:**

- |   |   |
|---|---|
| <input type="checkbox"/> Allen Karp Memorial Fund | <input type="checkbox"/> Arnold Miller Memorial Fund  |
| <input type="checkbox"/> Bikur Cholim             | <input type="checkbox"/> Mark Kasdin Memorial Fund    |
| <input type="checkbox"/> Shomrei Tikvah           | <input type="checkbox"/> Rabbi's Discretionary Fund * |
| <input type="checkbox"/> Cantor's Special Fund *  | <input type="checkbox"/> Religious School             |
| <input type="checkbox"/> Capital Improvements     | <input type="checkbox"/> Youth                        |
| <input type="checkbox"/> Family Shabbat           | <input type="checkbox"/> Shabbat Luncheons            |
| <input type="checkbox"/> Shiva Fund               | <input type="checkbox"/> Passport to Israel Fund      |
| <input type="checkbox"/> Social Action Fund       | <input type="checkbox"/> Tzedakah Fund                |
| <input type="checkbox"/> Trees for Israel Fund    | <input type="checkbox"/> Sons of Tikvah               |
| <input type="checkbox"/> L'Dor VaDor              | <input type="checkbox"/> Torah Restoration Fund       |
| <input type="checkbox"/> Library Fund             | <input type="checkbox"/> Yahrzeit Fund                |
| <input type="checkbox"/> Prayerbook/Chumash       | <input type="checkbox"/> General Donation             |
| <input type="checkbox"/> Safety & Security Fund   | <input type="checkbox"/> Other_____                   |
| <input type="checkbox"/> Ritual Fund              |   |

\*Please send separate checks for these funds.  
You can make your contributions online by  
Clicking the "Giving" link at bnaitikvah.org

## B'NAI TIKVAH DIRECTORY

TITLE	NAME	PHONE #	E-MAIL ADDRESS
Rabbi	Robert Wolkoff	732 297-0696	myrabbi@bnaitikvah.org
Cantor	Bruce Rockman	732 422-0963	Cantor@bnaitikvah.org
President	Adrienne Ross	732 422-0637	President@bnaitikvah.org
VP Activities	Amanda Uniman	732 422-0780	AmandaBethUniman@gmail.com
Co-VP	Mindy Austein	201 820-1192	Melinda.Austein@gmail.com
VP Administration	Kevin Krane	732 296-1327	KevinRKrane@gmail.co
VP Membership	Bobbi Binder	732 690-4779	BobbiJBinder@gmail.com
VP School & Youth	Andrew Goldberger	732 342-9885	mkag@comcast.net
Co-VP	David Kozodoy	732 967-1416	DKozodoy@me.com
VP Ways & Means	Gary Bergman	732 246-8285	GarysFinally@gmail.com
Recording Secretary	Gary Wesalo	609 642-8967	GWesalo@aol.com
Financial Secretary	Larry Cohen	732 821-4376	licdac@optonline.net
Treasurer	Andrew Ross	732 422-0637	adrcpa@comcast.net
Asst. Treasurer	Jeff Berger	908 281-5413	bergjij@gmail.com
Past Presidents	Allison Nagelberg	732 846-1464	Nagelberga@aol.com
	Ruth Anne Koenick	732 828-8141	RAKoenick@gmail.com
<b>TRUSTEES</b>	Debbie Allen	732 771-5916	emaesq@gmail.com
	Nancy Asher-Shultz	732 297-1932	NanAsher@hotmail.com
	Craig Cohen	732 658-3042	pbgrebe2001@yahoo.com
	David Cukor	732 690-6714	lpcushionsales@aol.com
	Renee Juro	732 960-1215	RSJuro@verizon.net
	Steven Juro	732 960-1215	SJuro@verizon.net
	Melissa Kessler	617 869-1422	Melissa.Dara.Kessler@gmail.com
	Adrienne Rogove	732 873-0331	Rogove@blankrome.com
	Marc Rosen	732 940-2786	Marc58187@aol.com
	Barry Safeer	732 432-9622	Safeer@comcast.net
	Jeff Schwartz	732 297-6365	JSchwartz@auerpak.com
	Charles Valan	732 991-2903	RunnerCLV@aol.com
<b>REPRESENTATIVES</b>			
Men's Club	Brian Berness	732 422-9449	BSBerness@verizon.net
Sisterhood	Kim Riemann	732 940-4066	Kim.Riemann99@gmail.com
USY	Mason Smoller	732 718-1732	MHSmoller@comcast.net
Executive Administrator	Lynne WeissMarshall	732 297-0696	admin@bnaitikvah.org
Administrator Assistant	Meryl Harris	732 297-0696	office@bnaitikvah.org
Religious School Director	Cantor Bruce Rockman	732 297-0696	CBTschool@bnaitikvah.org
Bikur Cholim	Jill Stone	609 642-6940	bikur@bnaitikvah.org
Blood Drive	Barbara Bergman	732 246-7285	Bobby@bnaitikvah.org
Book Club	Lynn Biderman	732 297-6691	R.Lynn.Biderman@gmail.com
Ebay Fundraising	Bonnie Kudwitt	732 422-7276	beedirect@aol.com
Gift Cards and Room Rentals	Main Office	732 297-0696	admin@bnaitikvah.org
Hakol Editor	Gary Bergman	732 246-7285	Hakol.@bnaitikvah.org
Historical Committee	Bill Greenberg	732 297-6953	Sailor4498@optonline.net
Cemetery Committee	Arthur Cederbaum	732 821-8162	Arthur.Cederbaum@mssm.edu
House & Grounds	Charles Valan	732 991-2903	RunnerCLV@aol.com
Judiaca/Gift Shop	Serena Blackin	732 390-9515	Serena@blackin.org
Junior Congregation	Barry Safeer	732 432-9622	Safeer@comcast.net
Kiddushes & Onegs	Main Office	732 297-0696	admin@bnaitikvah
Men's Club	Craig Cohen	732 658-3042	pbgrebe2001@yahoo.com
	Josh Oliver	732 305-7040	JoshuasOliver@yahoo.com
Religious School Committee Co-Chairs	Suzanne Oliver	732 305-7040	pooters608@aol.com
	Sharon Cohen	732 658-3042	Goldberg-Sharon@hotmail.com
Ritual Committee	Gordon Heit	732 297-6284	gordon0217@comcast.net
Shabbos Luncheons	Lynne WeissMarshall	732 297-0696	admin@bnaitikvah.org
Supermarket Gift Cards Manager	Barry Safeer	732 432-9622	Safeer@comcast.net
Sisterhood	Lori Sookerman	732 274-9599	lorisookerman@comcast.net
Co-Presidents	Rochelle Wistreich	732 422-4273	wis437@optonline.net
Softball League	Mark Kirsch	609 356-0490	MarkKirsch@comcast.net
USY/Kadima	Sydney Sookerman	908 210-8379	nsbrunswickusy@gmail.com
Webmaster	Kim Riemann	732 940-4066	webmaster@bnaitivah.org
Youth Committee	TBD		

Hakol Rates Size	Artwork (W x H)	Annually 10 Issues	Single Issue
Full page	8" x 10.5"	\$675	\$100
½ page	3¾" x 10½" / 8" x 5"	\$525	\$80
¼ page	3.75" x 5"	\$400	\$60
Business card	2" x 3.5"	\$300	\$45

Sun	Mon	Tues	Wed	Thurs	Fri	Sat
	Candle Lighting 1 <sup>st</sup> 4:58 8 <sup>th</sup> 5:07 15 <sup>th</sup> 5:15 22 <sup>nd</sup> 5:23	Shabbat Ends 2 <sup>nd</sup> 5:59 9 <sup>th</sup> 6:07 16 <sup>th</sup> 6:15 23 <sup>rd</sup> 6:23			<b>1</b> 26 Sh'vat  USY Kinnus	<b>2</b> 27 Sh'vat  Jr. Congregation Game Night USY Kinnus
<b>3</b> 28 Sh'vat Religious School World Wide Wrap USY Kinnus Rutgers Promenaders	<b>4</b> 29 Sh'vat  Board of Directors Open Men's Basketball	<b>5</b> 30 Sh'vat  Open Men's Basketball	<b>6</b> 1 Adar I  Religious School Lunch with Rabbi	<b>7</b> 2 Adar I	<b>8</b> 3 Adar I  Birthday Shabbat	<b>9</b> 4 Adar I Jr. Congregation Lunch & Learn Passover Poker Kadima Regional Event
<b>10</b> 5 Adar I Religious School Israel Presentation KADIMA Event Bet Jet Program	<b>11</b> 6 Adar I  Sisterhood Board Open Men's Basketball	<b>12</b> 7 Adar I USY Bubble Wrap Book Club Open Men's Basketball	<b>13</b> 8 Adar I  Religious School Lunch with Rabbi	<b>14</b> 9 Adar I	<b>15</b> 10 Adar I	<b>16</b> 11 Adar I
<b>17</b> 12 Adar I  No Religious School Men's Club Rutgers Promenaders	<b>18</b> 13 Adar I  Office & School Closed PRESIDENTS' DAY	<b>19</b> 14 Adar I  Open Men's Basketball PURIM KATAN	<b>20</b> 15 Adar I  Religious School Lunch with Rabbi PURIM KATAN II	<b>21</b> 16 Adar I  Bikur Cholim Executive Committee	<b>22</b> 17 Adar I  USY Senior Shabbaton	<b>23</b> 18 Adar I Jr. Congregation First Round with Rabbi Kadima Shabbat USY Senior Shabbaton
<b>24</b> 19 Adar I  Religious School	<b>25</b> 20 Adar I  Ritual Committee Open Men's Basketball	<b>26</b> 21 Adar I  Open Men's Basketball	<b>27</b> 22 Adar I  Religious School Lunch with Rabbi USY Event	<b>28</b> 23 Adar I		



1001 Finnigans Lane  
North Brunswick, NJ 08902

PLEASE DELIVER  
BEFORE February 1

PRSR STD  
AUTO  
U.S. POSTAGE PAID  
HILLSBOROUGH, NJ  
PERMIT NO. 203