

Our Mission: To foster a vibrant egalitarian Jewish community founded in the religious customs and traditions of Conservative Judaism; offering excellent Jewish education and community activities for all ages with commitment to Israel and Jewish communities throughout the world.



Tu B'Shevat "New Year of the Trees"



Wednesday, January, 2nd	Lunch with Rabbi
Saturday, 5th	KADIMA Movie Night
Wednesday, 9th	Lunch with Rabbi
Friday, 11th	Birthday Shabbat
Sunday, 13th	Men's Club
	Youth Bowling
Monday, 14th	Blood Drive
	Sisterhood Board
Wednesday, 16th	Lunch with Rabbi
Saturday, 19th	Lunch & Sing
	USY Dance
Saturday, 26th	First Round with Rabbi
Monday, 28th	Ritual Committee
Wednesday, 30th	Lunch with Rabbi (noon)
	Rabbi in Monroe (2:30pm)
	USY Dinner & Movie

From Rabbi Robert L. Wolkoff

You can't tell where you're going if you don't know where you came from.



This time of year marks a great period of transition—from the Book of Genesis to the Book of Exodus. That may not sound so dramatic but, trust me, it's not merely a question of turning a page. Instead, our readings from the Torah trace the history of human civilization—and more than that, they invite us to examine our place in that history.

Throughout the Book of Genesis, we were reading about the passionate desires that make life with humans so filled with danger yet, at the same time, so filled with potential. There's disobedience (Adam and Eve), hatred and violence (Cain and Abel), lust and rape (Dinah and Shechem), disloyalty and betrayal (Joseph and his brothers). But there's also love (Isaac and Rebecca), devotion (Abraham), perseverance (Leah), resourcefulness (Joseph). The list could be multiplied many times over. The full spectrum of human behavior, good and bad, is on display in Genesis.

By the end of the book, though, something has happened, something that will change the world. A new people is born. Our people. From a single father, to a small family, to a clan, to a people. It is—we are—a people whose origin is linked to the promises of peoplehood, the fate of a particular land, and the commands of a god (in fact *The* G-d, the One and Only). Our fathers and mothers stood alone in the struggle to overcome the worst in human nature, and to accentuate the best.

There was little in the pagan world, with its cruelty and rapaciousness, to guide them. And our mysterious G-d offers precious little. G-d only speaks about three dozen times in Genesis, and ten of those times are in the first chapter! Many verses, and many years, can go by with-

out anyone hearing the voice of G-d. Nevertheless, by the end of the book, the Jewish people have become distinct enough that they are poised to offer a new and radical divine vision to the world.

Ours is a nation that is meant to be hospitable and just toward neighbors and strangers; a nation where relationships are based on integrity, not on fear or dominance; a nation with humble aspirations, more interested in conquering character than conquering empires; and, above all, a nation in covenant partnership with G-d. Still, two things have to happen in order for our ancestors to live up to those standards. First, we have to get back home—remember that the Book of Genesis ends with exile in Egypt. But, second, on the way home, we must receive the ultimate gift of divine guidance, the “legislation” that will allow not just a small family but instead an entire people to exist without tearing themselves apart—the Torah.

It is this unique combination—the purification in the crucible of experience and the tempering with divine wisdom—that sets the Jewish people apart.

And now...what? What are we supposed to make of all this? If we merely read Genesis, followed by Exodus, as a glimpse into our past, we will completely miss its ultimate purpose. Instead, we are invited to look to the lessons of Genesis and Exodus and apply them to our own time. What are the passions that threaten to tear us apart *today*? What can we do *today* to keep them in check? How in *today's* noise-saturated world can we tease out at least an echo of the word of the Lord? What can we do *today* to demonstrate our loyalty to the covenant?

William Faulkner once famously said, “The past isn't dead. It isn't even past.” There's no greater example of that truth than the Torah's stories of our origins. They live in us, and we, whether we know it or not, live in them.

**Saturday, January 19th
Lunch & Sing**



Cantor Bruce D. Rockman from the Religious School

What's Happening at Religious School: A Year of Service



This year in our religious school we have begun participating in the “ShinShinim” program--the name is derived from the Hebrew letters Shin Shin, the first letters in the words “Shnat (year of) Sherut (service). It is the gap year for Israeli high school graduates before their mandatory military service.

A “*shinshin*” is an emissary sent by the Israeli government and the Jewish Agency for Israel to communities abroad with the goal of educating people of all ages about Israel and Israeli culture. Maya Shany, our “shinshin” is supported by Federation and by contributions from B’nai Tikvah and Neve Shalom in Metuchen.

The vision and mission of the *ShinShinim* program is to bring *ruach Yisraelit* (Israeli spirit) to the people with whom they work and provide informal programming to build Jewish identity and to educate children and adults about the Jewish homeland.

The “*ShinShinim*” program strengthens Israel and Diaspora relations through the strong people-to-people connections that the program cultivates.

The goals of the “*ShinShinim*” program are:

1. To build a solid relationship between the community and Israel by nurturing a real personal connection between young Israelis and area Jews.
2. To encourage members of our community to see Israel as an integral and crucial piece of our Jewish identity.
3. To move people from a simple love to a more complex understanding of, and pride in, Israel.

This is the first year that our community has participated in the program. Gradually, we are realizing the fruits of our commitment. Maya participates in our programs and brings her spirit to our Religious School classes. The most obvious result has been the growing relationships between our students and Maya; a few of our Dalet students are looking forward to visiting Maya in Israel.

Tu B'shvat

“A well tended sapling grows into a tall, strong tree. A child who is nurtured and inspired to love Israel and to care for it will grow into strong, upstanding citizens with a strong sense of identity. This is what the JNF Youth and Education Division is about - nurturing the next generation so that they can in turn love and nurture Israel, their heritage.”

We all “planted trees” in Israel when we were kids. We dreamed of traveling to Israel and visiting our trees. JNF has been planting trees in Israel, rebuilding our ancient homeland, since 1901. Today, we can visit Israel and experience how JNF has built cities such, as Tel Aviv, and invented advanced water filtration systems and irrigation methods that are helping to save our planet.

This year, our school will greatly benefit from the relationship the leadership of B’nai Tikvah has nurtured with the Jewish National Fund (JNF). In celebration of Tu B’shvat, Israel’s Arbor Day, on January 13th, a JNF educator will present age-appropriate programs to all of our students. On May 5th, we will host a second JNF educational program in conjunction with Yom Haatzmaut, Israel Independence Day.

As you may know, I am very enthusiastic about our connection with Israel. Our generation has been gifted with extraordinary access to Israel and to our heritage. It is my mission to teach our story to our students and help them develop their own personal understanding of our Jewish inheritance.

Let’s Learn Together,
Cantor Bruce Rockman



The synagogue earns up to 15% when you shop at **smile.amazon.com** (not amazon.com). Click under the search bar where it says: “Supporting:” Enter to search for: “Congregation B’nai Tikvah” and select the one that indicates: “**N Brunswick NJ**”

From our President Adrienne Ross

The world stands upon three things: Torah, divine service, and acts of kindness. (Avot 1:2)



While I may not remember much from my days at Hebrew School, I do remember learning that Pirke Avot teaches us the world stands on three things. Finding a community that enables us to live these tenets is important and, as we say, “at B’nai Tikvah, You Can.”

1) Torah:

The concept of Torah can be defined in two ways: 1) The Mitzvah of reading the Torah out loud, and 2) the mitzvah of learning. While everyone is well aware that you can hear the reading of the Torah at CBT, it is also important to appreciate the myriad of learning opportunities that we have and encourage members to partake. Some of the opportunities are “didactic” and some are “experiential.”

A few weeks ago, we sponsored a “Friends of IDF” brunch for the community. There were almost a hundred people gathered to learn more about what the FIDF does: “we support them, so they can defend us.” CBT was well represented at the brunch but importantly, this provided a meaningful opportunity for us to learn how we, at CBT, can show our support for Israel and learn more about the important programs the Friends of IDF have.

How else can we learn and challenge our mind? Whether you come to shul on Shabbas and are challenged to think by our Rabbi’s words of wisdom, participate in the Hartman Institute course or weekly lunch program, or had the opportunity to see the film, “The Fight of Our Lives,” it is clear that *at CBT you can* continue to learn and grow.

2) Divine Service:

Divine Service (or prayer) is easily understood. For me, prayer is both in the synagogue and in the home. The power of a congregation praying together cannot be

overstated. For anyone who doubts me, plan to be in shul on February 2nd when CBT hosts USY Mid-Winter Convention. The power of prayer will ring through the building as we pray together with more than two hundred High Schoolers.

3) Acts of Kindness:

The morning of our Annual Meeting, the building was abuzz with donations for our Needy Family program. Our Congregation helped make the holidays brighter for some families who, without our caring, would not have had much to celebrate. We provided socks, coats, blankets, and other basics to keep our adopted families warm and to bring joy to their lives. Janice Baer has led this effort for years, with significant support from Jen Shapiro and others on the committee, who manage lists, shopping, packing, and distribution, providing us the opportunity for CBT to demonstrate that we care and fulfill the mitzvot of chesed. What is amazing is how much participation we have, with everyone being an “unsung hero.” No recognition, no plaques. Just that warm feeling of knowing we’ve helped someone.

One of the other amazing things about our Congregation is how we are there for individuals in need. Not only do we meet the needs of the greater community and feed our souls, but we are there for our own community at times of need. Whether this is through our Bikur Cholim, where we tend to needs of the ill, or when we ensure a minyan for a house of mourning...*at CBT, You Can!*

But we also can celebrate! This year, we will have the privilege of honoring our Rabbi and Ruth-Ann for their 40 years of divine service to the Jewish Community. We will join together and celebrate the leadership that enables us, every day, to help define who we are as a Congregation and a community. Please join me on March 30th in celebrating together and know that... *at CBT, You Can!*

HAKOL

The Newsletter of **Congregation B'nai Tikvah, JCC of North & South Brunswick** 1001 Finnegan's Lane, North Brunswick, NJ 08902

Published monthly, except July and August. Submissions are encouraged about events, group activities, and anything relevant to the Jewish community. Submissions, subject to available space and editorial constraints, are due by the 15th of the preceding month. Please address all articles and correspondence to Hakol@bnaitikvah.org and try to avoid use of PDF files. Current issues are emailed via the CBT Newsletter. Archives can be found at bnaitikvah.org/hakol. Editors: Gary Bergman, Ann Gold, Art Biderman, and Janet Weiss. Advertising: Meryl Harris.

The JCC Early Childhood Center

Saying Goodbye Is Never Easy



Carol Winter

The JCC of North and South Brunswick Early Childhood Center has enjoyed a long history of excellence since 1975 and has been one of the longest-running preschools in our area. Unfortunately, changing demographics, along with the emergence of public preschools, have made it financially impossible for us to keep our ECC doors open any longer.

Saying goodbye is never easy. A new chapter for both students and teachers. A new journey that we are all about to take. The loving, kind, and caring demeanor, day after day, of the teachers, both past and present, has truly been an asset to me, as well as to all the children whose lives we have touched.

Together, throughout the years, we gave so many children the skills and confidence necessary to become independent, proud, successful adults. We guided many children through the small things which often turned out to be milestones. We wiped lots of tears, tied lots of shoes, went through gallons of glue and paint, cut up reams of construction paper, cleaned up tons of toys, and we even managed to potty train a few children along the way!

How much fun and how rewarding it has been for me for the past three decades, but most memorable of all is what the children gave to my heart. It truly has been an honor and a joy to have played a significant role in educating a generation of young children in our community. These wonderful memories will remain in my heart forever.

L'hitraot,
Carol Winter

Inquiring Minds Need To Know:

Illness: if someone you know is hospitalized or ill at home, send a note in confidence to: bikur@bnaitikvah.org
The committee will confer with Rabbi Wolkoff and provide whatever assistance they can.

Birth: We love to send these announcements of Mazel Tov with details of name, weight, and date of birth. Also provide names of the parents and siblings. A picture would be nice if the baby agrees to pose.

USY / KADIMA



Sydney Sookerman
Advisor

Our December events were a success! Kadima and the entire religious school came together for B'nai Tikvah's annual Chanukah Party. USY had a table, where everyone made an edible dreidel out of a marshmallow, pretzel stick, icing, and a Hershey kiss! It was definitely a crowd favorite.

The following Sunday, Kadima held its own Chanukah party, where we played a white elephant game and everyone went home happy with a gift! The Kadimanicks ate latkes, played dreidel, enjoyed music and basketball in the gym. USY'ers turned out for a Kippah Painting & "Late Night" Cereal Bar event to honor the mitzvah of Chesed Day-Acts of Kindness.

The Kippahs they created will be donated to the synagogue. Feel free to put one on as you enter B'nai Tikvah! Lastly, Hagalil USY attended the USY International Convention (IC) in sunny Orlando, Florida, December 23rd - 29th. USYers get to experience memorable things at IC, such as seeing their summer program friends from far away regions, listening to famous guest speakers, getting involved with community service. Convention attendees always experience something incredible at IC (such as when reggae music star Matisyahu performed for USY in Chicago last year)!

January Events

Kadima Movie Night (SA/TO) - January 5th
USY & Kadima Off-Site Event - January 13th
Hagalil USY Freshman Shabbaton/Dance - January 18th - 19th
USY Chinese Food & Movie Night (SA/TO) - January 30th

An Important Announcement

B'nai Tikvah will be hosting the Regional Convention from February 1st to the 3rd. This will be the New Jersey Region of USY Hagalil Mid-Winter Kinnus. As congregants, your help is needed to house these teens for the weekend. Whether you can host 2 or 6 teens, any housing is crucial to a successful convention. With your help, Hagalil can have a wonderful weekend and we as a congregation can show Hagalil how strong and committed the community at B'nai Tikvah is to our youth.

Sign up at this link to be a host: bnaitikvah.org/usyconv

Any questions about housing, please contact:
Serena Blackin: serena@blackin.org 732-390-9515
or Steve Juro: sjuro@verizon.net 732-343-4088



CONGREGATION B'NAI TIKVAH
MEN'S CLUB

SERVING THE SYNAGOGUE AND THE COMMUNITY SINCE 1983



Craig Cohen



Josh Oliver

World Wide Wrap XIX

Sunday, February 3rd, 9:00 am



Conservative Jews from around the world will celebrate the mitzvah of Tefillin at morning minyan, joining thousands of others in the ninth annual "World Wide Wrap" sponsored by the Federation of Jewish Men's Clubs.

Annual CBT Gala Event

Saturday, March 30th

Save the Date...

Book the Babysitter...

Find your Dancing Shoes.

It's going to be a great night...
as always!

Let's Celebrate Our
Rabbi & Rebbitzin
for all they have done for the
Jewish Community,
especially Ours!

- Attend the Gala
- Place an ad or "wellwisher"
- Sell an ad or provide a Silent Auction item





Lori Sookerman



Shelly Wistreich

Saturday, February 9th - Bring your friends and join us for Passover Poker.
Open to the entire community. See our ad in this edition of Hakol. RSVP to rakoenick@gmail.com.

Wednesday, March 27th - In conjunction with the East Brunswick Jewish Center, we welcome Rabbi Deborah R. Prinz, author of "On the Chocolate Trail," a delicious adventure connecting Jews, religions, travel, rituals and recipes to the magic of cacao. This program is open to the entire community. See our flyer on page 9 and on the website.

Mazel Tosses

Enhance the simcha of your child's special day by having Sisterhood provide these bags of soft candy to sweeten the day. Also great for an aufruf. Order your Mitzvah Baskets and Mazel Tosses at www.bnaitikvah.org at least one month before your mitzvah.

Torah Fund

The new pins are available with a \$180-or-above pledge. We'll love welcoming you as a Torah Fund benefactor, helping the Women's League for Conservative Judaism to support the Jewish Theological Seminary, its teachers, Cantors, and Rabbis.

Contact: Ann Rosenzweig 732-249-9141
Anndyapt@optimum.net

Gift Shop

Store Hours: Sunday 9 am - 12 pm
January Special: 20% off all tallit and jewelry
Take an additional 50% off all clearance items
Serena Blackin. 732-390-9515 or 848-702-3445

Mitzvah Baskets

Help us decorate the bima with nonperishable food baskets. We also deliver baskets to other synagogues. Tell your friends about this service. Contact: Teresa Samtur 732-821-8163 or msamtur@comcast.net

Membership

Please visit bnaitikvah.org/sismember to discover the joy of getting involved in our circle. Sisterhood will love welcoming you. Lisa Seidman Lssnj9@verizon.net

Daily Schedule of Services

Sunday	9:00 am & 7:30 pm
Monday	7:30 pm
Tuesday	7:30 pm
Wednesday	7:30 pm
Thursday	7:30 am & 7:30 pm
Friday	8:00 pm
Saturday	9:30 am

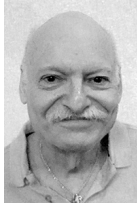


Monday, January 14th, 5 - 9 pm

Shalom...thoughts from a B'nai Tikvah congregant

Time & Shabbat

As I sit at my computer, pondering what to write for the next issue of Hakol, my mind is drawn back to that time in our lives when the world seemed to be in a state of helter-skelter, 18 years ago, in 1999. As you may recall, many of us were quite apprehensive about the potential problems that were approaching as we moved closer to the start of the year Y2K + 1, but we made it and the world was still intact on January 1, 2001.



Joel Goldman

On reflection, the issue of a Jewish response, being a People of the Book, took on a different meaning. We do have an ancient tradition of learning and deriving meaning from the flow of time within and across every moment. Holy texts have taught us that Jewish time does not have the linear, sequential quality of Day Timers or pocket calendars that we use to plan our linear, sequential activities. We attune ourselves to the rhythms and qualities of time by attending to the flow or energies throughout the year, across and within months, through the periodicity of the holy days, and the ways in which our bodies, souls, minds, and hearts respond to, and accompany, the flow of time and our harmonies.

The daily, weekly, monthly and yearly cycles speak to us as we prepare for Shabbat. The first Shabbat of the new millennium evoked the question of whether we would be ready. The technology of time has given us nano-seconds, carbon dating, and 24-hour banking, but the basic software of Jewish time is Shabbat. For days we live in a world governed by the means and ends of production. Shabbat, as Rabbi Abraham Joshua Heschel said, is a palace in time, and in that last year of the old millennium we faced the possibility that the palace itself could be severely damaged. Instead of sitting in the warmth and light

of Shabbat, we could have been sitting in cold and darkness. We were concerned that the BIOS (Basic Input Output System) in our computers may have had trouble understanding that last click from 1999 to 2000, but Shabbat runs on a different set of control statements.

How can we bring the wisdom and insights of Shabbat to inform our actions and understandings in response to the hazards of relying too heavily on the flimsy artificial and technological devices of our time? On the monthly cycle, we will be preparing for Rosh Chodesh, the vessel which will hold the blessings for the month of Shevat. That Shabbat is the 21st of the month of Tevet. In the last days of Tevet, the moon will be getting smaller, the reflection of the source of all light will be getting fainter. In the dark of the moon, in the dark of the winter, we ask that the life-sustaining rhythms and sequences of time continue to nourish us and all creation in the month of Shevat and for the year ahead. Leading up to Parshat Shemot, we must re-double our energies regarding the social, economic, and political slavery and oppression which is already upon us. That, as many people as possible should be working gainfully. That social systems are attending to the sick, the poor, the orphan and the stranger. That food banks for the hungry should be full and shelters for the homeless are provided. That we all take a step back and reflect on how we can contribute to making this world a better place for the next generation.

A heavy message and a big responsibility, but one we dare not avoid.

Eileen, Joshua, and I wish our fellow congregants a healthy, prosperous, and peaceful year ahead.

B'Shalom,
Joel Goldman

ENJOY LUNCH AND LEARN

Enjoy three of life's pleasures— learning, discussing, and eating— on Wednesdays, 12-2pm, at CBT.

Rabbi Wolkoff starts us off with an explanation of the week's parasha, or perspective on a holiday, or theories on an issue (based on a terrific handout). Examples: Chanukah, miracle or power grab? Contemporary parallels to 2500 BCE. Joseph, hero and/or manipulator? We, the 6 - 13 "students," jump in

with questions, comments, our own take on the subject.

No learning on an empty stomach, right? So... we begin with a Classical Caterers lunch: a hot entrée, salad, and cookies (\$12).

Interested? Call the office (732-297-0696) to confirm that you'll be joining us.

Sunday, January 13th
JNF Tu B'Shevat
Religious School program



**JEWISH
NATIONAL
FUND**

Your Voice in Israel

BACK BY POPULAR DEMAND!!

“Passover Poker”

**Same game — great food
...and it's not Passover, either!**



Passover Poker
In February??
Oy Vey!!

Come and Play

Saturday night, February 9th

Check-in at 7:40PM*

(Snow Date: February 16th)

No need to know how to play poker to play Passover Poker.
It's an easy, fast-paced game of trumps, in which you play
each hand against a different pair of players.

*Grab your spouse or a friend and join us for fun,
noshes, and drinks while socializing with all who attend.*

***Open to the entire community!
Bring your friends for a great time!***

(21 and over, please)

**Advance Couvert \$18.00 per person
Couvert at the door will be \$25.00 per person**

***Please arrive on time. Play begins at 7:55pm**

Please send check by Feb. 4, 2019, to Ruth Anne Koenick, 1001 Finnegans Lane, North Brunswick, NJ 08902

Names of persons attending: _____

Phone # _____ E-mail _____

Enclosed is my check (\$18.00 per person) in the amount of \$ _____

Requested Foursome Pairing: _____

[] Check here if you need a partner or foursome pairing

Please make checks payable to: Congregation B'nai Tikvah Sisterhood

The Security Committee

In response to the recent events that have impacted our fellow Jewish families, B'nai Tikvah has organized an internal security committee to work with our North Brunswick Police Department's Local Law Enforcement Unit as well as to connect with U.S.



Homeland Security. Our mission is to implement standards and practices that keep pace with the challenges we face in making sure all of our members and guest are safe when visiting and participating in events in our building.

We take the issue of security VERY SERIOUSLY, as evidenced by our applying for and being awarded a \$147,000 Security Grant to upgrade systems and protection elements on our property. Complementing those upgrades are just the first steps in our process of making everyone feel comfortable from arrival to departure.

awarded a \$147.000 Security Grant to upgrade systems and protection

During the next few months, we look forward to sharing our progress as we move ahead. We also want to make everyone aware that this is all "work in Progress," so we ask everyone's patience.

At this point, we are looking for adult congregants to be greeters at Friday evening and Saturday morning Shabbat services. These greeters are not "security", but rather a welcoming asset and additional eyeballs on those coming to our services. The first line of defense here is observation. If you see something, say something to any member who's overseeing the service.

Looking forward to updating all of you as we move ahead. If anyone has additional questions, please reach out via email to either Kevin Krane (VP/Admin) at: kevinrkrane@gmail.com or myself: Charlie Valan (Chair/House & Grounds) at runnerclv@aol.com.

GIFT CARDS WILL LOWER YOUR DUES

ACME, STOP 'N SHOP, A&P, WHOLE FOODS SHOPRITE, LOX STOCK & DELI, HOME DEPOT

Sold Monday through Thursday: 9:00am - 5:00pm

Meet one of our newest members



Maisey (1), Josh, Cheryl, and Miriam (4)

What is your home town?

I'm originally from Philadelphia (the northeast) and when I was 15 my family and I moved to Cherry Hill, NJ. My husband grew up in Cherry Hill. In 2012, my husband and I moved to South Brunswick so I could be closer to my job.

What is your occupation?

I am the Coordinator of Family Advocacy and Advocacy Services at The Arc of New Jersey, the state chapter of The Arc. I help families who have a child or adult child with an intellectual and developmental disability to navigate the system. My husband is a Licensed Social Worker and a Licensed Clinical Alcohol and Drug Counselor. He works at University Behavioral Health Care, which is part of Rutgers.

Why did you join CBT?

My daughter Miriam started at CBT's preschool when she was 2 and we fell in love with the community and have been here ever since! We have been attending Family Shabbat and other activities for a few years now, but now that Miriam is 4 years old and in religious school, we felt it was time to become official members of CBT.

What are you hoping to gain from your membership?

I hope to build more friendships and a better understanding of my Jewish faith.

What is your favorite vacation?

I really enjoy sleeping these days (2 young kids keep me busy!), but being outside and exploring new places is a favorite family activity.

What is your favorite holiday?

Passover. I love the traditions, the story, and the food!

Share one fun fact about you or your family.

Although my husband and I lived 5 minutes away from each other in Cherry Hill, we did not meet until our college graduation. I live on the "east side" and he lived on the "west side" so we went to different schools, including high school. We finally met when we randomly sat next to each other at our college graduation. The rest is history!

B'nai Tikvah Tribute Book Ad Form

Ad Type	Width & Height	Donation
Back Cover (full color)	8" x 10.5"	\$3,600 Includes: two tickets to Gala
Inside front or back cover (full color)	8" x 10.5"	\$2,700 Includes: two tickets to Gala
Full Page	8" x 10.5"	\$800
Half Page	8" x 5-1/8"	\$450
Quarter Page	3-7/8" x 5-3/4"	\$360
Business Card	3-7/8" x 2-3/8"	\$180
Well Wisher Plus	Up to 50 words	\$72
Well Wisher	Up to 20 words	\$36

All ads are in black and white unless otherwise noted

Name: _____

Business Name (if applicable): _____

Address: _____

City: _____ State: _____ Zip: _____

Phone: _____ Email: _____

Ad Type(s) Desired: _____

Total Amount (enclose a check made payable to Congregation B'nai Tikvah: \$ _____)

Please send completed form to:

Congregation B'nai Tikvah • Attn: Fundraising Chair
1001 Finnigans Lane • North Brunswick, NJ 08902

Send camera ready art (PDF preferred or Word doc) to ads@bnaitikvah.org

Deadline for artwork submission and payment is March 3, 2019

Questions? Please call Steve Juro at 732 343-4088 (mobile)

For more information, please visit www.bnaitikvah.org/gala

Thank You for Your Support!

Tax-exempt organization; federal ID #22-2249762

Hope to see you on March 30th to honor our Rabbi's
40 years of service to the Jewish community

2019 Mah Jongg Cards From Sisterhood

Order your 2019 Mah Jongg League cards so you and your friends will ready to play by April. No orders accepted after Jan. 8. Make checks payable to B'nai Tikvah Sisterhood and send to:



Fern Katronetsky
1280 NW 26th Lane
Delray Beach, FL 33445



STANDARD CARD: # of cards _____ X \$8.00 = \$ _____

LARGE PRINT CARD: # of cards _____ X \$9.00 = \$ _____

TOTAL AMOUNT \$ _____



Name: _____

Address: _____

Phone #: (_____) _____

E-Mail: _____



I WANT YOU

to help house our USYers for Mid-Winter Convention February 1-3

There's not much to it:

- Driving to shul
- A place to sleep
- A few snacks (no meals needed)

Sign up TODAY at bnaitikvah.org/usy or contact Serena Blackin: serena@blackin.org, 732-390-9515 or Steve Juro: sjuro@verizon.net - 732-343-4088

Supportive and compassionate care, sensitive to your personal and spiritual needs.

- Low Nurse to Patient Ratio
- Home Health Aide support for Family
- Complementary Chicken Soup
- Music & Massage Therapy



STEIN HOSPICE

at The Oscar and Ella Wilf Campus for Senior Living

(732)227-1212

www.wilfcampus.org

Accredited by the National Institute for Jewish Hospice

Jewish National Fund - Breakfast for Israel

Congregation B'nai Tikvah
1001 Finnegans Lane, North Brunswick

“Making the Desert Bloom – Fulfilling His Grandfather’s Dream”

Sunday, March 3, 2019

10:30 am Program

Please arrive at 10:00 am for breakfast and registration

RSVP required by February 25 at jnf.org/gardenstate

No Cost to attend – Dietary Laws Observed

Featuring Guest speakers:



Alon Ben-Gurion, Grandson of David Ben-Gurion

Ben-Gurion has built an extensive network through his years as a hospitality consultant managing hotels worldwide, which has given him the tools to help fulfill the shared vision of JNF and David Ben-Gurion.



Russell F. Robinson, CEO, Jewish National Fund

As Chief Executive Officer, Russell F. Robinson has succeeded in making Jewish National Fund one of the top-rated charities in the United States, and the leading organization for the land and people of Israel

Event Co-Chairs

Alyson and Michael Chananie, Dr. Beth and Jules Cohn, Rachel Cohen, Anne and Adrian Kroll,
Barbra and Bruce London, Allison and David Nagelberg, Phyllis Solomon,
Dr. Naomi Vilko and Dr. Sidney Goldfarb

For more info. contact Anna Millstein, Senior Campaign Exec.
amillstein@jnf.org 973 593 0095 x826



PJ Our Way Presents
When I Grow Up

Sunday, January 6, 2019

Learn how Judaism inspired magician Ben Cohen's career and create your own project learning skills and magic tricks.

At Congregation B'nai Tikvah,
 North Brunswick
 3-4:30PM

\$10 per child, free for parents
 This program is for children 8-11
 and an adult guest

A SERIES FOR YOUNG PEOPLE TO EXPLORE THEIR CAREER DREAMS

Meet interesting professionals, learn how they accomplished their dreams, how their Jewish identity inspired them, and engage in hands-on projects and fun activities with them.

Register today:
jewishheartnj.org/magic

Questions: inbars@jewishheartnj.org, 732.588.1800



230 Old Bridge Turnpike
 South River, NJ 08882

p 732.588.1800
 f 732.432.0292
info@jewishheartnj.org

jewishheartnj.org
 Follow us:



SAVE THE DATE!

On the *Chocolate* Trail

with **Rabbi Deborah Prinz**

Wednesday, March 27

7:45PM

The Sisterhoods of Congregation B'nai Tikvah of North Brunswick and the East Brunswick Jewish Center invite you to join us for dessert, wine, and chocolate!

Rabbi Deborah Prinz will speak about “**Jews On the Chocolate Trail**,” a delectable journey through the Jewish history of chocolate. Rabbi Prinz draws from her world travels on the trail of chocolate to enchant chocoholics everywhere as she unwraps the role of religions in the trade, retail, and manufacture of chocolate since it was first introduced to Europeans. Explore the surprising connections to chocolate in this gastronomic adventure!

Copies of *On the Chocolate Trail, 2nd edition*, will be available for purchase & signing by Rabbi Prinz.

Event Location: Congregation B'nai Tikvah
1001 Finnegan's Lane, North Brunswick, NJ

Open to the Community!

(Over 21 years old)

CBT & EBJC Sisterhood Members: \$10.00 ~ Non-members: \$18.00

RSVP to Lynn Biderman at r.lynn.biderman@gmail.com

Atlas World Travel



Contact us for your next vacation. Mention B'nai Tikvah and we will make an appropriate donation.

Gloria Adlerman
President

317 Forsgate Drive

732-605-0262

Do Not Throw It Away LLC



House Clean Outs
Junk Removal
Moving Managing

Andrew Cerame
732-586-7525

Andrew@donothrowitaway.com
donothrowitaway.com

Linda J. Fellen, Esq.

FELLEN & FELLEN, LLC **ATTORNEYS at LAW**

21 Kilmer Drive
Building 2, Suite G
Morganville, NJ 07751

(732) 431-0473
(732) 780-3533
linda@fellenlaw.com
fellenandfellen.com

It's Your Party

Your one stop Party People!



- *Custom Theme Centerpieces
- *Backdrop Balloon Artistry
- *Sign-in Books Boards
- *Specialty Linen rentals
- *Custom Invitations, Place Cards and Favors

Preferred Vendor of
Classical Caterers
732-431-0099

52 North Main Street, Rt 79 Marlboro, NJ 07746
itsyourparty@optonline.net www.itsyourparty.biz

The Jewish Home for Exceptional Care

As a not-for-profit senior community, we are committed to caring for the elderly in a way that respects and celebrates Jewish tradition and values.



(732)568-1155

www.wilfcampus.org



STEIN ASSISTED LIVING
at The Oscar and Ella Wilf Campus for Senior Living

350 DeMott Lane
Somerset, NJ



(732) 329-2255

Fax : (732) 329-2228

DR. STEVEN B. DICKERT

CHIROPRACTOR

58 Wetherhill Way
(Corner Georges Road)
Dayton, N.J. 08810

By Appointment

Academic Dermatology

Felix Urman M.D., FAAD

Board Certified Dermatology

75 Veronica Ave

Suite 205

Somerset, NJ 08873

Ph 732-246-9900 Fax 732-246-9902





Barry Dworkin

Sales and Leasing Consultant
732-584-2897
bdworkin@penskeautomotive.com

Lexus of Bridgewater

P.O. Box 6000
1550 Route 22 East
Bridgewater, New Jersey 08807
732-271-4000
Fax: 732-469-3792
www.lexusofbridgewater.com

A PENSKE AUTOMOTIVE DEALERSHIP

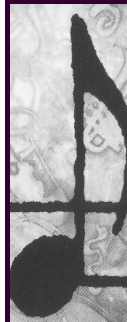
Present this ad and take delivery of any vehicle, new or used, and Lexus of Bridgewater will donate \$100 to B'nai Tikvah



Joe Marino, Realtor

Licensed: Sales Associate

South Brunswick
3530 Highway 27
Kendall Park, NJ 08824
732 297-0200
Cell: 732 570-8518
joemarino@weichert.com



Spencer Brooks

Music Educator, Vocalist, Pianist, Arranger

201 South Second Avenue
Unit 40
Highland Park, NJ 08904
980-358-3391
smbrooks000@gmail.com



SOUTH BRUNSWICK
3228 Route 27 • Kendall Park, NJ 08824
(732) 297-0032 • (732) 297-0558 fax
frontdeskjp@jerseypt.com

PHYSICAL THERAPY
www.jerseypt.com

MILLTOWN/EAST BRUNSWICK • frontdeskeb@jerseypt.com
180 Tices Lane • East Brunswick, NJ 08816 • (732) 418-0733 • (732) 418-7011 fax

PRINCETON/PLAINSBORO • frontdeskpp@jerseypt.com
3 Liberty Street, Suite 1032 • Plainsboro, NJ 08536 • (609) 785-5386 • (609) 785-5388 fax

Koch Monument

Established 1902

76 Johnson Avenue Tel: (201) 342-2185
Hackensack, NJ 07601 Fax: (201) 342-0249
www.kochmonument.com

Monuments - Duplicate Markers - Cemetery Lettering

5% discount for B'nai Tikvah Members

We got **YOU** to look at this ad, now let **US** get customers finding **YOU**.

Meryl Harris: 732-297-0696

bnaitikvah.org/hakol-submissions



LYNNE WEISSMARSHALL NOTARY PUBLIC

20 Indiancreek Road
Matawan, NJ 07747
732-310-5665

Also available in the synagogue office
732-297-0696 Weissmar@optonline.net



RESTAURANT

Eat in or Take Out
Catering for all occasions

Heritage Plaza
228 Ryders Lane
Milltown, NJ

Phone: 732-214-8900
Fax: 732-214-0555

- Independent Living
- Assisted Living
Secure Memory Care
- Nursing Care



LIONS GATE

Lifestyle. Care. Community. Tradition.

Inspiring Wellness!

- Rehabilitation Center:
Post-Hospital Care
Outpatient
Open to Public

www.lionsgateccrc.org

Plan Your Group Event at Lions Gate.
Call 856-782-1200.



Legacy Circle of Givers

Marty Abschutz
Arie Behar
Bobby & Gary Bergman
Bobbi Binder
Sharon & Craig Cohen
Gale & Marc Dillman
Joyce & Gerald Fishelberg

Sam Fisher
Arlene & Mitchell Frumkin
Ann M. Gold
Caryl & Danny Greenberg
RuthAnne Koenick
Jacqueline Master
Allison & David Nagelberg

Shivi & Dan Nili
Debra & Scott Rekant
Rochelle & Marc Rosen
Adrienne & Andy Ross
Barry Safer
Marcia & Jeff Schwartz
Brenda & Mark Sherman

Janet Weiss
Lynne WeissMarshall
Gary & Marcia Wesalo
Rabbi Robert L. Wolkoff
& Ruth-Ann Breitler
Tammy & Keith Zimmerman-
Plus other anonymous givers

Mount Sinai Memorial Chapels, Inc.

NATIONALLY RECOGNIZED FOR SERVICE EXCELLENCE



PURSUIT OF EXCELLENCE
AWARD WINNER



Donations - November 13 through December 14, 2018

We gratefully acknowledge and thank the following contributors for their generous gifts. Your special donations make up a part of our synagogue's total income. We rely on you.

Rabbi's Discretionary Fund

Audrey & Louis Flumen, in loving memory of Irving Flumenbaum
 Gary Horowitz, in loving memory of Murray Horowitz
 The Tell Family and Myra Presworsky
 Audrey & Louis Flumen in loving memory of Irving Flumenbaum
 Gary Horowitz, in loving memory of Murray Horowitz
 Mark & Brenda Sherman, in honor of the birth of Joseph Samuel Uniman
 Leslie & Judith Bravman, in honor of the birth of Paige Margaret Fishelberg
 Nila & David Mason, in loving memory of Milton Mason
 Barry Panson, in loving memory of Harold Herlands
 Harry & Amanda & Joseph Uniman, in loving memory of Joseph Uniman
 Chris Murray
 Laurie & Charlie Valan, Daria, Brooke, Samantha and David, in loving memory of Harold Valan
 Arel & Lara Weisberg, in loving memory of Cy Rubin

Cantor's Discretionary Fund

The Tell Family and Myra Presworsky
 Marty & Marci Abschutz
 Laurie & Charlie Valan, Daria, Brooke, Samantha and David, in loving memory of Harold Valan
 Candice, Craig, Emilee and Sydney Botnick, in loving memory of Elliott Botnick

Bikur Cholim Fund

Arlene & Arthur Cederbaum, in loving memory of Max Eisenberg
 The Levin Family, in loving memory of Dick Schaap

Yahrzeit Donations

Michele & Dave Greenfield, in loving memory of Ester Tzizes and Marsha Thomas
 Joyce & Joel Gerbman, in loving memory of Solomon Gerbman
 Carole & Howard Kalish, in loving memory of Albert Kalish
 Phyllis Rich, in loving memory of Howard Rich
 Burt & Vickie Bauman, in loving memory of Yetta Bauman
 Norlyn & Dennis Kessler, in loving memory of Nathan Schanen
 Sylvia Yoskowitz, in loving memory of Morton Wasserman
 Rees Klemish, in loving memory of Audrey May
 Jordan & Dian Rosuck, in loving memory of Cheryl Gelfand
 Susan Turner, in loving memory of Herman Turner and Dora Turner
 Rachel & Michael Silverstein, in loving memory of Theresa Silverstein

Youth Fund

Suzy, Kevin, Shea and Reese Krane, in loving memory of Joan Krane

Religious School

Steven & Andrea Katz, in loving memory of Evelyn Brown

Family Shabbat Fund

Janet Weiss, in honor of the birth of Joseph Samuel Uniman

Social Action Fund

Janet Weiss
 Joyce & Gerald Fishelberg, in loving memory of Marlene Rautenberg
 Amy Smith, in loving memory of Murray Horowitz
 Jodi Marcou, in loving memory of Louis Wexler
 Allen & Nadine Weg
 Steven & Renee Levin
 Howard & Myra Dickert

Endowment Fund

Diane & Jack Blakin Family Foundation

Shabbat Luncheon Fund

Susan Miller in honor of the birth of Joseph Samuel Uniman
 Susan Miller in honor of the Bar Mitzvah of Connor Lawson
 Renee & Joe Grodman, in honor of the birth of Joseph Samuel Uniman
 The Blackin Family, in loving memory of Abraham Klein
 Larry & Dorothy Cohen
 Alan & Gaye Feinberg, in loving memory of Sylvia Ginsberg
 Alan & Gaye Feinberg, in loving memory of Irwin Newman
 Shari Tell, in honor of Rachel Allen and her parents, Debbie and Stu
 Rose & Jeff Berger, in honor of the birth of Joseph Samuel Uniman
 The Rogove Family, in honor of the birth of Joseph Samuel Uniman
 Suzy, Kevin, Shea and Reese Krane, in loving memory of Abraham Klein
 Diane & Jack Blakin Family Foundation
 William & Gail Reinholtz, in loving memory of Bennett Reinholtz

Shomrei Tikvah Fund

Blanche Fruhling, in loving memory of Benjamin Seidenstein

Safety & Security Fund

Janet Weiss, in loving memory of Michael Weiss

General Fund

Marvin & Betty Stark, in honor of the birth of Joseph Samuel Uniman
 Rosy & Ray Benno, in loving memory of Joseph Cohen
 Gerald Juris, in loving memory of Rose Juris
 Terry Berk
 Carole & Howard Kalish, in loving memory of Murray Kravitz

Donations - continued

Sons of Tikvah Fund

Norman & Dotty Politziner, in loving memory of Bernice Zagha

Norman & Dotty Politziner, in loving memory of Richard Price's father

Mark Kasdin Memorial Fund

Maxine Kasdin, in loving memory of Ann Kernis

Maxine Kasdin, in honor of the birth of Joseph Samuel Uniman

Al & Phyllis Garten, in loving memory of Yetta Kadin

Allen Karp Memorial Fund

Ilene Karp, in loving memory of Rachel Ladimer

Ilene Karp, in loving memory of Jack Sondike

Library Fund

Howard & Diane Uniman, in loving memory of Joseph Uniman

Shiva Fund

Herbert Mars, in loving memory of Adrienne Mars and Anna Silverberg

From Ways & Means

Have you been to a Bar/Bat Mitzvah celebration or wedding reception at B'nai Tikvah in recent years? If so, you have come to know the extraordinary quality of service that Classical Caterers provides. Being one of the few genuinely Kosher establishments in the State, its quality is beyond comparison.



Gary Bergman

However, if you have been one of the fortunate few who have engaged them to host your celebration, you'd know this quality comes at a price, which is why, when it comes to hosting our annual Gala, the ticket charge barely covers the cost of the catering, the open bar, and the band.

Our volunteers do their best to procure items that will bring in profits from the silent auction and we derive some benefit from the 50/50s and other drawings, but the main source of revenue for the evening always has been the Tribute Book.

We hope you will come celebrate with us on Saturday, March 30th, but whether or not you can make it, please place an ad or "wellwisher" using the Tribute Book ad form (see page 11) to show your appreciation of our Rabbi and Rebbitzin for their years of dedication to us and to the Jewish community.

THANK YOU



to Margery Atwater, Gilda Gildenberg, Bill Greenberg, and Jay Scheuer for making birthday calls. A special "Thank You" to Phyllis Pinsky for doing beautiful calligraphy on B'nai Mitzvah and Baby Naming certificates, and to Marlene Buckwald for picking up challahs for Shabbat each week.

Contributions

In honor of: _____

In memory of: _____

Occasion of: _____

This donation is being made by:

Name: _____

Address: _____

Telephone: _____

Please send an acknowledgment to:

Name: _____

Address: _____

City, State, Zip: _____

Amount of your donation:

[] \$18 [] \$36 [] \$54 [] \$72 [] \$118 Other \$ _____

Please Allocate Donations to:

- | | |
|---|---|
| <input type="checkbox"/> Allen Karp Memorial Fund | <input type="checkbox"/> Arnold Miller Memorial Fund |
| <input type="checkbox"/> Bikur Cholim | <input type="checkbox"/> Mark Kasdin Memorial Fund |
| <input type="checkbox"/> Shomrei Tikvah | <input type="checkbox"/> Rabbi's Discretionary Fund * |
| <input type="checkbox"/> Cantor's Special Fund * | <input type="checkbox"/> Religious School |
| <input type="checkbox"/> Capital Improvements | <input type="checkbox"/> Ritual Fund |
| <input type="checkbox"/> Family Shabbat | <input type="checkbox"/> Shabbat Luncheons |
| <input type="checkbox"/> Shiva Fund | <input type="checkbox"/> Passport to Israel Fund |
| <input type="checkbox"/> Social Action Fund | <input type="checkbox"/> Tzedakah Fund |
| <input type="checkbox"/> Trees for Israel Fund | <input type="checkbox"/> Sons of Tikvah |
| <input type="checkbox"/> L'Dor VaDor | <input type="checkbox"/> Torah Restoration Fund |
| <input type="checkbox"/> Library Fund | <input type="checkbox"/> Yahrzeit Fund |
| <input type="checkbox"/> Nursery School | <input type="checkbox"/> Youth |
| <input type="checkbox"/> Prayerbook/Chumash | <input type="checkbox"/> General Donation |
| <input type="checkbox"/> Safety & Security Fund | <input type="checkbox"/> Other _____ |

*Please send separate checks for these funds.
You can make your contributions online by
Clicking the "Giving" link at bnaitikvah.org

B'NAI TIKVAH DIRECTORY

TITLE	NAME	PHONE #	E-MAIL ADDRESS
Rabbi	Robert Wolkoff	732 297-0696	myrabbi@bnaitikvah.org
Cantor	Bruce Rockman	732 422-0963	Cantor@bnaitikvah.org
President	Adrienne Ross	732 422-0637	President@bnaitikvah.org
VP Activities	Amanda Uniman	732 422-0780	AmandaBethUniman@gmail.com
Co-VP	Mindy Austein	201 820-1192	Melinda.Austein@gmail.com
VP Administration	Kevin Krane	732 296-1327	KevinRKrane@gmail.co
VP Membership	Bobbi Binder	732 690-4779	BobbiJBinder@gmail.com
VP School & Youth	Andrew Goldberger	732 342-9885	mkag@comcast.net
Co-VP	David Kozodoy	732 967-1416	DKozodoy@me.com
VP Ways & Means	Gary Bergman	732 246-8285	GarysFinally@gmail.com
Recording Secretary	Gary Wesalo	609 642-8967	GWesalo@aol.com
Financial Secretary	Larry Cohen	732 821-4376	licdac@optonline.net
Treasurer	Andrew Ross	732 422-0637	adrcpa@comcast.net
Asst. Treasurer	Jeff Berger	908 281-5413	bergjij@gmail.com
Past Presidents	Allison Nagelberg	732 846-1464	Nagelberga@aol.com
	Ruth Anne Koenick	732 828-8141	RAKoenick@gmail.com
TRUSTEES	Debbie Allen	732 771-5916	emaesq@gmail.com
	Nancy Asher-Shultz	732 297-1932	NanAsher@hotmail.com
	Craig Cohen	732 658-3042	pbgrebe2001@yahoo.com
	David Cukor	732 690-6714	lpcushionsales@aol.com
	Renee Juro	732 960-1215	RSJuro@verizon.net
	Steven Juro	732 960-1215	SJuro@verizon.net
	Melissa Kessler	617 869-1422	Melissa.Dara.Kessler@gmail.com
	Adrienne Rogove	732 873-0331	Rogove@blankrome.com
	Marc Rosen	732 940-2786	Marc58187@aol.com
	Barry Safeer	732 432-9622	Safeer@comcast.net
	Jeff Schwartz	732 297-6365	JSchwartz@auerpak.com
	Charles Valan	732 991-2903	RunnerCLV@aol.com
REPRESENTATIVES			
Men's Club	Brian Berness	732 422-9449	BSBerness@verizon.net
Sisterhood	Kim Riemann	732 940-4066	Kim.Riemann99@gmail.com
USY	Mason Smoller	732 718-1732	MHSmoller@comcast.net
Executive Administrator	Lynne WeissMarshall	732 297-0696	admin@bnaitikvah.org
Administrator Assistant	Meryl Harris	732 297-0696	office@bnaitikvah.org
Religious School Director	Cantor Bruce Rockman	732 297-0696	CBTschool@bnaitikvah.org
Bikur Cholim	Jill Stone	609 642-6940	bikur@bnaitikvah.org
Blood Drive	Barbara Bergman	732 246-7285	Bobby@bnaitikvah.org
Book Club	Lynn Biderman	732 297-6691	R.Lynn.Biderman@gmail.com
Ebay Fundraising	Bonnie Kudwitt	732 422-7276	beedirect@aol.com
Gift Cards and Room Rentals	Main Office	732 297-0696	admin@bnaitikvah.org
Hakol Editor	Gary Bergman	732 246-7285	Hakol.@bnaitikvah.org
Historical Committee	Bill Greenberg	732 297-6953	Sailor4498@optonline.net
Cemetery Committee	Arthur Cederbaum	732 821-8162	Arthur.Cederbaum@mssm.edu
House & Grounds	Charles Valan	732 991-2903	RunnerCLV@aol.com
Judaica/Gift Shop	Serena Blackin	732 390-9515	Serena@blackin.org
Junior Congregation	Barry Safeer	732 432-9622	Safeer@comcast.net
Kiddushes & Onegs	Main Office	732 297-0696	admin@bnaitikvah
Men's Club	Craig Cohen	732 658-3042	pbgrebe2001@yahoo.com
	Josh Oliver	732 305-7040	JoshuasOliver@yahoo.com
Religious School Committee Co-Chairs	Suzanne Oliver	732 305-7040	pooters608@aol.com
	Sharon Cohen	732 658-3042	GoldbergSharon@icloud.com
Ritual Committee	Gordon Heit	732 297-6284	gordon0217@comcast.net
Shabbos Luncheons	Lynne WeissMarshall	732 297-0696	admin@bnaitikvah.org
Supermarket Gift Cards Manager	Barry Safeer	732 432-9622	Safeer@comcast.net
Sisterhood	Lori Sookerman	732 274-9599	lorisookerman@comcast.net
Co-Presidents	Rochelle Wistreich	732 422-4273	wis437@optonline.net
Softball League	Mark Kirsch	609 356-0490	MarkKirsch@comcast.net
USY/Kadima	Sydney Sookerman	908 210-8379	nsbrunswickusy@gmail.com
Webmaster	Kim Riemann	732 940-4066	webmaster@bnaitivah.org
Youth Committee	TBD		

Hakol Rates Size	Artwork (W x H)	Annually 10 Issues	Single Issue
Full page	8" x 10.5"	\$675	\$100
½ page	3¾" x 10½" / 8" x 5"	\$525	\$80
¼ page	3.75" x 5"	\$400	\$60
Business card	2" x 3.5"	\$300	\$45

Sun	Mon	Tues	Wed	Thurs	Fri	Sat
		1 24 Tevet Office & Schools Closed NEW YEAR'S DAY	2 25 Tevet Religious School Lunch with Rabbi	3 26 Tevet	4 27 Tevet	5 28 Tevet Jr. Congregation KADIMA Movie Night
6 29 Tevet Religious School Rutgers Promenaders	7 1 Sh'vat Board of Directors Open Men's Basketball ROSH CHODESH	8 2 Sh'vat Open Men's Basketball	9 3 Sh'vat Religious School Lunch with Rabbi	10 4 Sh'vat	11 5 Sh'vat Birthday Shabbat	12 6 Sh'vat Jr. Congregation
13 7 Sh'vat Religious School RS Meeting Sons of Tikvah USY/Kadima Men's Club	14 8 Sh'vat BLOOD DRIVE Sisterhood Board	15 9 Sh'vat Open Men's Basketball	16 10 Sh'vat Religious School Lunch with Rabbi	17 11 Sh'vat Bikur Cholim	18 12 Sh'vat USY Freshman Shabbaton	19 13 Sh'vat USY Dance Shabbat Shirah
20 14 Sh'vat No Religious School Rutgers Promenaders Tu B'Shvat Dinner Environment Program	21 15 Sh'vat Office & School Closed MARTIN LUTHER KING DAY TU B'SHVAT	22 16 Sh'vat Open Men's Basketball	23 17 Sh'vat Religious School	24 18 Sh'vat Executive Committee	25 19 Sh'vat	26 20 Sh'vat Jr. Congregation School Fundraiser First Round with Rabbi
27 21 Sh'vat Religious School	28 22 Sh'vat Ritual Committee Board of Ed	29 23 Sh'vat Open Men's Basketball	30 24 Sh'vat Religious School Lunch with Rabbi USY Dinner & Movie	31 25 Sh'vat	Candle Lighting 4 th 4:27 11 th 4:34 18 th 4:41 25 th 4:50	Shabbat Ends 5 th 5:30 12 th 5:36 19 th 5:44 26 th 5:51



1001 Finnegan's Lane
North Brunswick, NJ 08902

PLEASE DELIVER
BEFORE January 1

PRSR STD
AUTO
U.S. POSTAGE PAID
HILLSBOROUGH, NJ
PERMIT NO. 203