

THINGS TO DO

Sisterhood/Adult Education

Jewish Americans, Part 1

Thursday, April 3, 8:00 PM

Sisterhood/Adult Education

Jewish Americans, Part 2

Sunday, April 6, 9:30 PM

Gift Shop Passover Bazaar

Sunday, April 6 & 13

Sisterhood/Adult Education

Jewish Americans, Part 3

Thursday, April 8, 8:00 PM

H. Howard Goldstein MD

Diabetes & Endocrinology

Sunday, April 13, 10:00 AM

Interfaith Yom Hashoah Service

Thursday, May 1, 7:30 PM

Sisterhood Elections & Dessert

Monday, May 12, 8:00 PM

Youth and Teen Events

See pages 14 & 15 for complete listing

Rabbi's Classes & Lectures

See page 3 for complete listing

See Inside for Details On These and Many More Events

Inside this issue:

| | |
|----------------------------|-------|
| Words from the Rabbi | 2 |
| Schedule of Daily Services | 4 |
| Hazzan's Voice | 4 |
| President's Message | 5 |
| Webmaster | 6 |
| Another Viewpoint | 6 |
| Membership Minute | 7 |
| B'nai Mitzvah | 7 |
| Congregation Events & Info | 8 |
| Religious School | 12 |
| Nursery School | 13 |
| B'nai Tikvah Youth | 14 |
| Sisterhood | 17 |
| Men's Club | 19 |
| 50 Plus | 19 |
| Supermarket Gift Cards | 23 |
| Contributions | 24-25 |
| Synagogue Directory | 27 |
| Calendar | 28 |

PASSOVER SCHEDULE OF SERVICES

Thursday, April 17

Fast of the Firstborn 7:30 am

Shacharit and Siyyum

Mincha 7:30 pm

Friday, April 18

Shabbat Dinner

Kabbalat Shabbat & Ma'ariv 8:00 pm

Saturday, April 19

Shabbat HaGadol 9:30 am

followed by Kiddush,

then Mincha Service

Ma'ariv 8:00 pm

at the Wolkoff home – 16 Gwyn Ave.

Sunday, April 20

1st day Pesach 10:00 am

followed by Kiddush,

then Mincha Service

Ma'ariv 8:00 pm

at the Wolkoff home – 16 Gwyn Ave.

continued on page 9

PASSOVER OUTREACH

This Passover, Congregation Bnai Tikvah is reaching out to young adults and college students attending school in central New Jersey to offer home hospitality for the Passover Seders.

We have contacted Jewish student organizations at several colleges and universities and Project Reconnect of United Synagogue to offer our invitation. If you will be hosting a Seder (or both Seders) in your home and would like to host a young adult (or two or three), please contact Marci Oslick at (908)874-0959 or by e-mail to marcioslick@yahoo.com.

Havdalah

Janis Candeub Hoffman

Judaism has a variety of special rituals, Havdalah, being one of them. The Havdalah service marks the end of Shabbat, performed no earlier than nightfall on Saturday night when three stars can be seen in the sky.

The Havdalah ritual requires a glass of wine, some fragrant spices, and a special Havdalah candle. The first blessing is made over the wine;

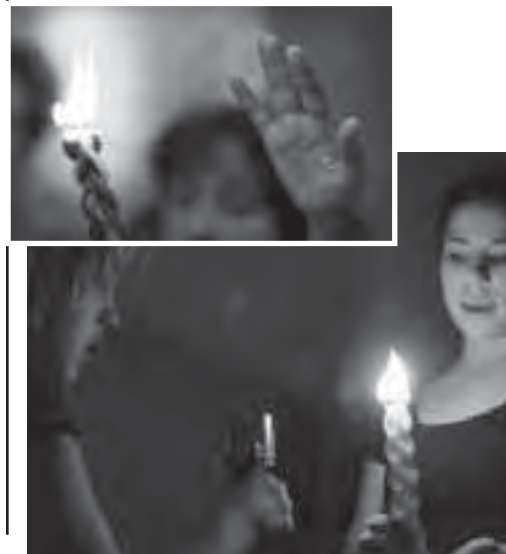
Blessed are you Lord our God, sovereign of the universe who creates the fruit of the vine.

The second blessing is recited over the fragrant spices. Spices commonly used are cloves, cinnamon, bay leaves. The spices are helpful as we are losing the special Sabbath "spirit" or "soul";

Blessed are you Lord our God sovereign of the universe Who creates varieties of spices.

The third blessing is recited over

continued on page 11



WORDS OF THE RABBI Rabbi Robert Wolkoff

Understanding is the key

One of the unwritten rules of human affairs is that revolutions—high intent or holy purpose notwithstanding—quickly descend into utter and bloody chaos. Whether in Iran of the ayatollahs, France of the guillotine and the Terror, Russia of the purges and gulag, China of the “cultural” revolution (and, believe it or not, cannibalism) or Germany of the Einsatzgruppen and camps, the same rule applies: “the new age” is usually just more of the old bloodshed and barbarity.

There are two exceptions to this rule, and we Jews living in America are beneficiaries of them both. The first exception is the revolution that took place in Egypt 3,000 years ago, when we were freed from the bondage of slavery. Although we were an unruly lot, and there were indeed some murderous episodes, our people never fell into the full-scale depravity that characterizes the modern revolution.

The other exception is the American revolution. Unlike the French Revolution, which quickly consumed itself from within, the American revolution turned to constructive rather destructive ends, creating a Bill of Rights rather than a Reign of Terror.

How do we explain these exceptions? One explanation is the quality of the people involved. We need hardly mention that Moses our Teacher was and still is incomparable. And even if they are not on the same exalted level of magnitude, there is a serious and profound qualitative difference between Thomas Jefferson and the Founding Fathers, on the one hand, and Robespierre and the Jacobins on the other hand.

More than the *people* involved in this exceptionalism, however, there was a *principle* involved. It was enunciated by that great heir of both the Jewish and American traditions, Justice Louis D. Brandeis, when he wrote, “The greatest dangers to liberty lurk in the insidious encroachment of men of zeal, well meaning but without understanding.”

Understanding is the key.

But what are we to understand?

Much of it is made clear in the Passover Haggadah. We learn there that the Rabbis stayed up all night talking about the liberation from Egypt, but there was still more to say.

In other words, we don’t know everything.

We learn that there are four different types of

children, and each is to be included and dealt with in an appropriate fashion.

In other words, we have to learn to respect difference.

We learn that there are many questions to ask, and many of them (two of the “Four Questions”, for example) don’t get answered.

In other words, the “certainties” which lead us to fight the good fight for what we believe in must be tempered with a continued search for truth, a continued reexamination of those “certainties” themselves.

We learn that we have to spill out wine in sadness at human suffering when we name the plagues which afflicted the Egyptians.

In other words, we must never dehumanize anyone, not even our enemies.

The list could be much, much longer.

Three thousand years ago, we experienced a miraculous revolution embodying principles of human decency and integrity. These were writ large “in the course of human events” (as the Preamble to the Declaration of Independence describes it) some 200 years ago. In every generation, we are taught, these principles are challenged. An oppressor arises, one who arrogates to himself the right to decide for everyone what is right and what is wrong—and, more important, which individuals are to be sacrificed for the sake of some “great purpose”.

John Stuart Mill wrote, “Whatever crushes individuality is despotism”. Our Torah teaches that each individual is created in the image of G-d. We Jews have witnessed more than our fair share of despots. We have seen, all too often and all too painfully, how the divine image has been trampled in the dust. May we therefore, this Passover, rededicate ourselves to the fight for freedom. May we seek the understanding of which Justice Brandeis spoke so eloquently. May we gain the wisdom to realize that the true measure of spirituality is not in our zeal in espousing what we hold to be true, but in our moderation and our lovingkindness in our relations with our fellow human beings.

Pesach kasher v’sameach,

Rabbi Robert L. Wolkoff

"Providing Relief, Restoring Function"

Marc Rubenstein, DPT Geoffrey Hunt, PT
Sean Moore, MPT



Our Services:
Orthopedic Rehab
Sports Rehab
Geriatric Rehab
Neurologic Rehab
House Calls Program

Medicare Certified, Most Insurances Accepted

Two convenient locations:

South Brunswick: 3228 Route
27 Kendall Park, NJ 08824
Phone: 732-297-0032

Milltown/East Brunswick:
180 Tices Lane
East Brunswick, NJ 08816
Phone: 732-418-7033

Visit Our Website Online At: www.jerseypt.com

Rabbi's Courses and Lectures

Courses:

Biblical Ecology 8 PM, Wed.
April 2 May 7

Bible Interpretation 8 PM, Wed.
April 16 May 14

Prayer 11 AM, Sunday
April 6 May 4

Jewish Parenting 9 AM, Wed.
(or: How to make your kid a mensch)
April 9 May 14

Lectures:

Apr. 9: Presentation of Passover Seder
Commentaries

May TBA: Judaism A-Z at congregants' home

June 8: Tikkun LeI Shavuot

In addition, watch for special shabbat lectures and discussions.

Integrity. Commitment. Professionalism.



*For A Free, No Obligation Market
Analysis Of Your Home, Or To
Receive The Latest Listings In Your
Area, Please Call Or E-Mail Me Today!*

Visit My Web Site At:
markjiorle.com
Serving All Of Central NJ

Mark Jiorle, e-Pro
Realtor-Associate®
NJAR® Circle of Excellence 2005-2007

Capital Property Realty
303 Amboy Avenue
Metuchen, NJ 08840

732-906-9400 (Office)
732-803-6299 (Cell)
mark@markjiorle.com (e-mail)



ADVERTISING IN HAKOL

Each issue of HaKol reaches over 400 Jewish households. HaKol advertising is one of the most cost-effective way to reach your local Jewish community. HaKol advertisers get free hyperlinks to their websites at www.bnaitikvah.org. HaKol is published 10 times a year, monthly except for July & August.

2007-2008 HAKOL ADVERTISING RATES

| Size | Art Dimensions (w x h) | Annual Contract: 10 Issues | Single Issue |
|---------------|--------------------------|----------------------------|--------------|
| Full Page: | 8" x 10.5" | \$675 | \$100 |
| Half Page: | 3.75" x 10.5" 8" x 5" | \$525 | \$80 |
| Quarter Page: | 3.75" x 5" | \$400 | \$60 |
| Business Card | 2" x 3.5" | \$300 | \$45 |

Contact Ruth Shindler at ruthshindler@comcast.net

OUR HAZZAN'S VOICE Cantor Bruce Rockman

The Shank Bone, Courage and Faith

I read the articles that I wrote for Pesach for the past two years and I liked them a lot.

They are informative and have my personal passion well expressed. I tried to be thoughtful and hopefully provocative enough for you to be willing to accept my gentle challenges.

Maybe I should not have read them after all, because NOW I can't think!!! I can't think the same way I did last year. You see, when I write these articles, they are not only a challenge to you, but to me as well. I believe that as long as we live and breathe, that we as citizens and Jews in particular have to do better, do more, and not be complacent.

Pesach, our spring holiday, is filled with hope and encouragement. We clear the decks of physical and emotional baggage and refreshingly start the year again. I think about a merry go round and the pursuit of the gold ring. As long as you're spinning you have another opportunity to grasp for lofty goals.

The beauty of our religion is that we taught to question authority through our text study, and at the same time we are given a complete, basic outline on how to live our lives. The outline is the calendar that provides the direction and discipline. The Torah itself provides the nuance and the opportunity to learn and to grow. We are expected to probe and question the teachings of our rabbis and scholars through the study of the Torah and our holy texts. We integrate these lessons and we are, hopefully going to be better for the effort.

The Passover Sedar is a perfect opportunity for all of us to ask questions and to challenge our teachers' wisdom.

As we retell to story of our liberation from Egypt, we are all expected to apply this real and metaphoric experience to our own living. The plight of the poor, despotic leadership in our own times, hunger and global warming are all as much a part of Pesach as is the shank bone. This bone on our Sedar Plates is not an archaic symbol of animal sacrifice. The shank bone represents courage and faith.

Just imagine yourself, the lowest people on the social scale, DEMANDING your freedom from tyranny. You have very few resources. What you

have is a moment of courage when you believe that IF you follow God's direction, you and your family will be redeemed. This takes outrageous chutspa, craziness, conviction, fear and faith. After all, you are being told to sacrifice a lamb and smear the blood on your door posts. While you are doing this, you are fully aware that your captures revere and worship this animal.

Courageously our ancestors were up to God's decrees. As Jewish Americans we live in the shadows of the sacrifices of our ancestors. Are you and I up to the challenge? Even tough, most of us are secure in our homes; does that mean we are living in a secure world? Awareness does not mean naivety. Pesach teaches us that although we are all slaves of Pharaoh, to be truly redeemed we must take responsibility for our own destiny and the future of our children's world.

Think about the courage of the shank bone, and maybe we will make our world a little better place.

Worship the Lord with Joy and Gladness!

Chag Sameach,

Cantor Bruce Rockman



The JCC of North & South Brunswick

SCHEDULE OF DAILY SERVICES

| | | | |
|--|-------------------------|----------|-------------------------|
| Sunday | 9:00 AM Shahareet | 7:30 PM | Mincha/Maariv |
| Monday | | 7:30 PM | Mincha/Maariv |
| Tuesday | | 7:30 PM | Mincha/Maariv |
| Wednesday | | 7:30 PM | Mincha/Maariv |
| Thursday | 7:30 AM Shahareet | 7:30 PM | Mincha/Maariv |
| Friday | | 8:00 PM | Kabbalat Shabbat |
| | | | Mincha/Maariv/Havdallah |
| Saturday | 9:30 AM Shabbat | April 5 | 7:15 pm |
| | | April 12 | 7:15 pm |
| <i>See Pesach Services schedules for details on the following;</i> | | | |
| | Ma'ariv & Havdallah | April 19 | 8:00 pm |
| | Mincha/Maariv/Havdallah | April 26 | 8:00 pm |

Babysitting available Shabbat morning 10:15 AM - 12:00 PM

HAKOL

The Newsletter of
Congregation B'nai Tikvah
JCC of North & South Brunswick
1001 Finnegan's Lane
North Brunswick, NJ 08902

Published monthly except for July and August. Submissions are welcomed about Congregation events, group activities, and other material relevant to the Jewish community.

All Submissions for **HAKOL** are due by the 15th of the preceding month

We recommend sending submissions and correspondence via e-mail to:
Hakol.CBT@gmail.com

All e-mail submissions are acknowledged via e-mail. You may also put submissions in the HaKol mailbox in the synagogue office. All submissions are subject to available space and editorial constraints. Please call Phil Welsner at 908-874-0959 if you have any questions.

SUBMISSION FORMATS:

TEXT:

Editorial submissions should be in MS-Word, AppleWorks, Pages, plain text, rich text format or typed directly into the body of an e-mail. No special fonts will be used without prior arrangement. Graphics embedded in a text file will not be used.

Graphics and photos must be submitted separately, rather than inside other files or documents.

GRAPHICS & IMAGES:

Advertisements should be submitted in one of the following formats; Quark 6.0 or earlier, Indesign CS1, PDF, EPS or TIFF. BMP or JPEG files may also be used, but may print as lower quality. All text should be converted to black and white. All images should be converted to grey scale. All images submitted for scanning must be photo or photo quality images.

ORDER FORMS & FLYERS:

Submit order forms and inserts to be sent with the **HAKOL** mailing to the editors by the 15th of the preceding month. Inserts must be submitted in hard copy to the office or as print ready files, PDF preferred.

FOR ADVERTISING INFO:

www.bnaitikvah.org/hakol.html
HaKol.CBT@gmail.com
or 732-238-6893

PRESIDENT'S MESSAGE Ruth Anne Koenick

RABBI WOLKOFF'S INSTALLATION

Catharine Drew Gilpin Faust, a noted Civil War Historian and President of Harvard University, who also happens to be my age, grew up in a very privileged tradition bound family, focused on formalized ways of organizing your life including how you placed your fork and knife on the plate when finished eating and what you did with the fingerbowl. A far cry from the home that most of us grew up in or live in today.

But, Dr. Faust has said that one of the things that she thinks characterizes her generation is that she has always been surprised by how her life turned out. Not for a minute do I dare to compare being president of Harvard to the honor of being president of Congregation B'nai Tikvah, although I imagine Dr. Faust also gets a reserved parking space but my guess is hers comes with a driver, but like her, I too find myself in a surprising role of speaking to you as part of this installation ceremony, certainly a role I never dreamed of having just as returning to a pulpit in NJ was very far from Rabbi Wolkoff's life plans.

In what seems like a lifetime ago, Arie and I were having lunch and he asked me to serve on the Rabbinic search committee. My immediate thought was a mixture of being honored, excited, knowledgeable about what we wanted in a Rabbi, and filled with a belief that this would be a short term assignment.

In keeping with Jeff's theme of a wedding, I am a pretty good planner, had my good china picked out when I was 12, knew that I would be married in my parent's backyard, what I was looking for, the qualities that I valued,...just had to find the right person. So it was as we began our search for a new Rabbi believing that we would easily find our beshert. As our work somewhat dragged on, I remember having a conversation with Rabbi Schoenberg, the director of placement for the Rabbinical Assembly. As we struggled with our search and entered year two of our work, he met with our committee. He said, you know you have a list of more than 10 qualities you are looking for in a Rabbi, figure out which three are the most important because that is what you will get.

I am here tonight to say we got far more than 3. You know, in one sense Rabbi Wolkoff, you have already been installed, for it is truly remarkable that in such a short time you have touched so many people. The way you teach about a particular prayer during Shabbat morning services, how you gently touch someone as you say a mishebarach, the warmth you use when talking to a b'nai mitzvah, how you use humor to make a point, and your passionate love of children are all qualities we sought.

Your adult education classes have attracted a consistent following, your sensitivity, scholarship and spirituality, the way you read Torah,

continued on page 21

From The Webmaster

Getting the Mail

It's been over 12 years since email communication has evolved from the "ham-radio" stage to become a mainstream way of communicating in the 21st century.

Some have no choice but to require a government employee to hand deliver envelopes to their residence but, the great majority of our congregants have the means and ability to receive notices from the synagogue electronically.

We publish the CBTnewsletter every Thursday and as required for notices of life-cycle and other events.

Over 380 individual members are receiving our announcements via email. But, that still leaves many families (or spouses) not getting all the information we have to offer.

Please visit www.bnaitikvah.org and click the "communications" link or simply drop a line to office@bnaitikvah.org to give us your email address at home and/or at work.

Educational Opportunity

If you would like to contribute to our website or just learn how to modify or correct our web pages, I would be happy to provide the tools and free training required. Who knows, you may develop an interest in building your own site for some special occasion.

Gary Bergman,
Webmaster@BnaiTikvah.org

*Learn something new.
"At B'nai Tikvah You Can"*

ANOTHER POINT OF VIEW

I Remember Mama's Ice Box

by Aaron Rosloff

The truck would pull up and men would throw down huge blocks of ice onto the sidewalk in front of our house and kids would scramble for the chips of ice that flew off as the ice man would carve out hunks for delivery. They used huge ice tongs with sharp ends to scrape out the size and outline of the piece that was ordered, and use an ice pick to separate the sections.

This was a trade, and part of the economy and lifestyle of urban living in the early twentieth century. The housewife would answer the call "Iceman. Who wants ice today?" and the women would call down the stairway or out the front window (if they had a front apartment) to send up a piece of ice for ten or fifteen cents depending on their needs or ability to pay. The vendor would cut out the block ordered, one or two cubic feet, grab it with his tongs and carry it upstairs on a thick mat on his shoulder.

Most apartment ice boxes were about the size of a modern fourteen cubic foot refrigerator. It was divided into two compartments. The ice went into the top section with room left over for the milk and fresh meat or fish. The lower section was for pots of cooked food and fresh vegetables. In the colder months, Mama had an auxiliary cooler in the form of a metal box fixed to the window frame with wires and hooks. Just open the window and slide open the cabinet door. Very handy in the winter months, but useless in the summer.

The first electric refrigerators appeared in our working class neighborhood in the early 1930's. They looked like an ordinary icebox with a waste paper basket on top. I remember my mother

continued on page 19

MARC D. BINDER, CPA

Phone: 732-627-0002

Fax: 732-627-0028

E-mail: mdbcpa@aol.com

www.marcdbindercpa.com

Tax Return Preparation-Accounting
Services-Financial Statements-
Retirement Planning-Estate Planning-
Computer Consulting
NOTARY ON PREMISES

109 Ethel Street
Somerset, NJ 08873-5121



(732) 329-2255

DR. STEVEN B. DICKERT

CHIROPRACTOR

58 Wetherhill Way
(Corner Georges Road)
Dayton, N.J. 08810

By Appointment

A MEMBERSHIP MINUTE

Allison Nagelberg, VP Membership

Mazal Tov to:

Sharon and Steven Weinreb
On the Bat Mitzvah of their daughter, Eliza

Mark and Amy Kirsch
On the Bat Mitzvah of their daughter, Alyssa

Jacqueline Master
On the Bat Mitzvah of her daughter, Emily

Linda Goodstein
On the Bat Mitzvah of her daughter, Lauren

Heartfelt Condolences To:

Arnie and Susan Miller and Family
On the passing of Arnie's mother, Lena

David and Desley Eichen
On the passing of David's father, George

Woody and Bonnie Stevens
On the passing of Woody's father, Alan

Josh Lavender beloved
On the passing his sister Shari Lavender Case

WE WANT YOU....

....TO HELP US SPREAD THE WORD!

Many congregants and prospective congregants have been coming out to our Barnes and Noble events, and the feedback has been incredibly positive.

We hope to broaden our reach, and spread the word of our incredible synagogue family – in other retail outlets, in member homes, in community clubhouses....the possibilities are endless!

Don't forget about our referral discount! For every new member you refer to B'nai Tikvah, after they have been members for one year, you get 25% off your dues!

Help us keep all of our dues as low as possible, and your own dues lower still!

Call to see how you can get involved!

Allison Nagelberg
Membership VP
Membership@BnaiTikvah.org

B'NAI MITZVAH



Jody Friedman, Apr. 5
Joel & Hilary Friedman
Michelle & Len Frank



Lauren Wistreich, Apr. 12
Kenneth & Rochelle Wistreich

LIKE MOST AMERICANS, YOU PROBABLY SPEND MOST OF YOUR TIME EARNING YOUR MONEY

But, how much time do you actually spend managing it?



At Wachovia Securities, we can help you manage and protect your wealth by:

- Helping you plan your portfolio, research your stocks, prepare an asset allocation plan and implement and track your plan

- Consolidating your brokerage and banking accounts into one asset management account to help with bill paying and expense tracking
- Providing access to your brokerage and banking accounts online

For more information, call:

Bruce M. Weinstein
Senior Vice President – Investment Officer
989 Lenox Drive, Suite 200
Lawrenceville, NJ 08648
888-219-2538 • 609-896-4625



**WACHOVIA
SECURITIES**

SECURITIES AND INSURANCE PRODUCTS

NOT INSURED BY FDIC OR ANY FEDERAL GOVERNMENT AGENCY • MAY LOSE VALUE
NOT A DEPOSIT OR IS GUARANTEED BY A BANK OR ANY BANK AFFILIATE

Wachovia Securities, LLC, member NYSE & SIPC, is a registered broker-dealer and a member firm of the U.S. Securities and Exchange Commission. ©2008 Wachovia Securities, LLC 82348 5/08

CONGREGATION EVENTS & INFORMATION

Feedback Committee

"How Am I Doing?"

This famous question from former NYC mayor Ed Koch expresses the purpose of the Feedback Committee; to field comments from the membership concerning the Rabbi and Cantor. This feedback will be used by both the clergy and the committee, to assess their effectiveness and what, if any issues need addressing. In this way, we can determine not only what issues need to be addressed and brought to the attention of the clergy, but what is being done well.

As Chairman of this Committee, which consists of Phyllis Safeer, Gary Ehrlich, Aaron Rosloff and myself, I would like to invite all members to feel free to submit their comments as they arise. All feedback will be confidential, and will be reviewed by the Committee, the Rabbi and Cantor.

Members are encouraged to participate by sending their comments by either filling out the feedback form on the Synagogue website,

<http://www.bnaitikvah.org/feedback.html>

via email to the feedback committee, by snail mail to the Synagogue office or by speaking to one of the members of the committee directly. Your feedback is important in helping Bnai Tikvah grow and improve.

Regards,
Gary Tinkel

Save The Date

**State of Israel Bonds - Breakfast
Honoring:**

Adrienne and Andy Ross

Sunday, June 8, 2008 10:00AM

**TIME for your FIRST TALLIS?
Fabulous Selection for Women & Men**

Discount Prices

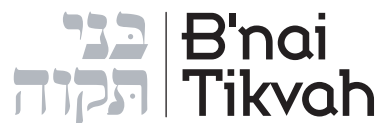
Call Amy Zelka in East Brunswick at:

732-613-8018

www.ekippah.com

Amy's Yarmulkas & Judaica

**Plus, Ladies Head Coverings, Judaica Gifts
Bar/Bat Mitzvah & Wedding Registry**



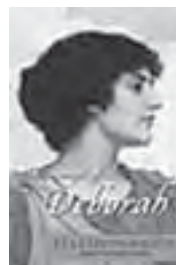
The JCC of North & South Brunswick

Judaica Gift Shop

Tues & Weds 4 pm to 6 pm

Sundays 9 am to noon

or by appointment (Serena at 732-390-9515)



GREAT READ!!

Triumph of Deborah

by Eva Etzioni-Halevy

(Third in a series about
biblical women.)

NEW!!

"Kosher by Design for Passover" cookbook

Bar/Bat Mitzvah & Wedding Registries
Retail Script

Save up to 50% off selected items in the
Clearance section !

Passover items 20% off in April!



INTERFAITH YOM HASHOAH SERVICE

**THURSDAY
MAY 1, 2008
7:30 PM**

A special Holocaust Memorial Service
composed by *Rabbi Robert Wolkoff*.



CONGREGATION EVENTS & INFORMATION

Save the date for a great evening **ART AUCTION**

Sponsored by Congregation B'nai Tikvah
& The B'nai Tikvah Men's Club

Date, Sunday Evening June 1, 2008

Preview - 6:30PM

Auction - 7:30PM-9:30PM

Admission - \$15 in advance, \$18 at the door

Wine & Cheese, Dessert and much, much more!

Details to follow soon.



Trusted care, beautiful results

Neal R. Gittleman, D.D.S., F.A.G.D. ■ DawnMarie Di Grazia, D.M.D.

279 East Main Street p 908.722.2999
Somerville, NJ 08876 f 908.218.9346
www.somersetdentalarts.com

PASSOVER SCHEDULE OF SERVICES

continued from page 1

| | |
|------------------------------|----------|
| Monday, April 21 | |
| 2nd day Pesach | 10:00 am |
| Mincha and Ma'ariv | 8:00 pm |
| Tuesday, April 22 | |
| Mincha | 7:30 pm |
| Wednesday, April 23 | |
| Mincha | 7:30 pm |
| Thursday, April 24 | |
| Shacharit | 7:30 am |
| Mincha | 7:30 pm |
| Friday, April 25 | |
| Shabbat and 7th night Pesach | 8:00 pm |
| Saturday, April 26 | |
| Shabbat and 7th day Pesach | 9:30 am |
| Mincha, Ma'ariv | 8:00 pm |
| Sunday, April 27 | |
| 8th day of Pesach | 9:30 am |
| Mincha, Ma'ariv | 8:00 pm |

Help the Temple and Yourself at the Same Time

Here's how it works;

If you're in the market to buy or sell a home I would be willing to donate 10% of my real estate commission back to the temple in your name at the conclusion of the transaction.



Joseph Plotnick
Weichert Realtors-Princeton
350 Nassau St
Princeton, N.J. 08540



Concerned about current
market conditions?
Buying or selling a home?
Call me for a free report on
"Local Market Conditions." You
will get the information you
need make a better decision
--whether you're buying or
selling a home.
Call or e-mail me.
I can help.

Office: 609-921-1900 • Cell: 732-979-9116 • E-Mail: jplotnick@weichert.com • Website: myprincetonrealestate.com

Unique distinction of selling 100% of my listed properties!

"I'm committed to represent your best interest throughout every Real Estate Transaction each and every time."

CONGREGATION EVENTS & INFORMATION

This may be an obvious question to ask Jews, but...

**Have you ever
wanted to
TELL
PEOPLE
WHAT
YOU
REALLY
THINK?**

**At B'nai Tikvah
You Can!**

And the people who are asking
really want to know!
Now's your chance!

**Fill out our
synagogue community survey
online at
www.bnaitikvah.org**

Paper surveys are also available
for those who prefer them.

MITZVAH PROJECTS

For my Bat Mitzvah project, as did Moshe, in the Parsha Terumah, I am collecting unwanted gold jewelry from any one whose heart is so moved. In parshat Terumah Moshe collected gold, silver, precious stones, fine linens and acacia wood, and more, from B'nai Yisrael, the children of Israel. He used these materials to build the tabernacle as instructed by Hashem, or G-D.

Do you have one gold earring and you can't find the other match? Or broken necklaces or bracelets that you will never get around to fixing and that you don't want anymore? Or rings too small to fit or that you will never wear again? I'll be collecting these unwanted gold items over the coming months and I'll sell them to generate cash. With the total amount of money that I collect, I will be purchasing food to make bagged lunches for those less fortunate than you and me. Please contact me at 732-432-9622 or via e-mail safeer@comcast.net if you have anything you wish to donate so that we can arrange to pick it up from you. Alternatively, you can give it to me or my mother or father, Phyllis or Barry Safeer when you see us at B'nai Tikvah. I will be collecting your unwanted gold through the end of May.

Thank you. Sarah Safeer



Calligraphy

Envelope Addressing
Save-the-Dates
Place Cards
Invitations
Weddings
Mitzvahs
Parties

The Calligraphy Cafe

www.CalligraphyCafe.com

(732) 254-5516

All Styles and Colors Available!

Linda J. Fellen, Esq.

FELLEN & FELLEN, LLC

Attorneys at Law

200 Craig Road
Manalapan, NJ 07726

(732) 431-0473
(732) 780-3533 Fax
linda@fellenlaw.com
www.fellenandfellen.com

CONGREGATION EVENTS & INFORMATION

How many Jews does it take to make a B'nai Mitzvah?

(A Hebrew grammar lesson)

Answer: No matter how many Jews try, they simply will not be able to make a B'nai Mitzvah?

Why not?

"B'nai" is the plural of "ben". We say "b'nai mitzvah" when we are speaking of two or more people who are reaching the age of Jewish majority, as long as at least one of them is male.

If we are referring two or more young women reaching this milestone, we say "b'not mitvah".

If we are speaking of only one person, we say either "bar mitzvah" or "bat mitzvah".

Either of these singular terms could, but need not be preceded by the article "a" in English. (There is no equivalent article to "a" in Hebrew.)

Remember that a "bar mitzvah" or a "bat mitzvah" is a person, not a ceremony or a party. "Bar mitzvah" or "bat mitzvah" describes the type of ceremony or the reason for the party. If more than one young person is being honored at the same service or at the same party, it is a "b'nai mitzvah" service, ceremony or party. The article "a" refers to the singular service, ceremony or party.

Henry Ricklis Holocaust Memorial Committee Yom HaShoah Observance

Sunday, May 4, 2008

"Generations of Survivors"

The observance will be held at 1:30 p.m. in the Richard P. Marasco Performing Arts Center at the Monroe Township High School. Seating is by general admission and all are welcome. The observance will feature a very moving Survivors Cadence and a Menorah Lighting Ceremony. Along with remembering those who perished in the camps the Menorah Lighting Ceremony will pay tribute to Irena Sendler, the little known Polish rescuer of 2500 Jewish children from the Warsaw Ghetto.

This year our special feature will be a round table discussion facilitated by Ricklis member David Rothman. Participating in this discussion will be:

continued on page 14

HAVDALAH

continued from page 1

the special Havdalah candle. Lighting a flame is a way of marking the distinction between the Sabbath and the weekday. After the blessing is recited one holds their hands up to the flame with curved fingers, observing the light on their hands;

Blessed are you Lord our God sovereign of the universe Who creates the light of the fire.

The blessing following is the Havdalah blessing—the blessing over the separation of different things. The blessing is recited over the wine. One can extinguish the flame from the candle using a few drops of wine;

Blessed are you Lord our God sovereign of the universe Who separates between sacred and secular between light and darkness, between Israel and the nations between the seventh day and the six days of labor.

I have experienced the Havdalah ritual with the B'Nai Tikvah community. I am glad to be a part of the group; gathering in a circular formation passing the spice and wine to the individuals near me. Our singing is often strong. I particularly like the melody. I am pleased to greet people wishing them a good week ahead; to carry on with new challenges.

Havdalah is one of the most pleasant and enjoyable experiences in the Jewish liturgy. It is at once mystical and familiar, singular yet warm and inviting. You feel that you wish to share the experience with family and loved ones and that you are already among family and loved ones whenever you attend.

If you would like to experience this moving service, below is the schedule of times for Havdalah throughout the month of April;

Mincha/Maariv/Havdallah

| | | | | |
|----------|-----------------|-------|----|---------|
| Saturday | 9:30 AM Shabbat | April | 5 | 7:15 pm |
| | | April | 12 | 7:15 pm |

See Pesach Services schedules for details on the following;

| | | | |
|-------------------------|-------|----|---------|
| Ma'ariv & Havdallah | April | 19 | 8:00 pm |
| Mincha/Maariv/Havdallah | April | 26 | 8:00 pm |

RELIGIOUS SCHOOL REPORTS

Ann Kanarek, Director

ISRAEL AT 60

On May 14, 1948 the British Mandate over Palestine expired, the Jewish People's Council gathered in Tel Aviv and approved the proclamation which declared the establishment of the State of Israel. Now, 60 years later, as we celebrate this significant anniversary, we need to reconnect with Israel and remember our history in a way that we've not done in recent years.

Eretz Yisrael, the Land of Israel, was the birthplace of the Jewish people. It was here that our spiritual, religious, and political identity was shaped. It was here that we created cultural values of national and universal significance, and gave to the world our most important book, the Hebrew Bible.

Our people have been pioneers and defenders since 1897 when *Theodor Herzl* convened the first Zionist Congress and proclaimed the rights of the Jewish people to national rebirth in our own country. We have made the deserts bloom, revived the Hebrew language, built cities and towns, and created a thriving community. We have made tremendous advances in many fields such as immigrant absorption, science, technology, medicine and education.

It's time again, that we as parents and educators reconnect our children to Israel. We need to deepen the significance of Israel in Jewish life so that future generations will have a strong and enduring identity with this most precious land. Let's make Israel relevant to our young people's lives.

As we celebrate 60 years of the modern State of Israel, join us at a community-wide concert and celebration on Thursday, May 22 (7:45pm-9:15pm) at the State Theater in New Brunswick. *Kol HaKavod* to many of our students who volunteered to take part in this special event and enlisted in our B'nai Tikvah Youth Choir. They will be performing and participating in this concert. We are very proud of them and look forward to celebrating Israel's 60th birthday celebration event with everyone.

PASSOVER CANDY SALE

Many thanks to our religious school families who helped promote our Passover Candy Fundraiser. Your dedicated efforts made this a very successful fundraiser and our students will greatly benefit from your generous support. If you aren't candy eaters

and would like to support us, a donation to the B'nai Tikvah Education Enrichment Fund in lieu of a purchase will be gratefully accepted.

A PERSONAL THANK YOU

On behalf of my entire family I would like to express our thanks for all your good wishes. We truly appreciate the generous donations made to the Religious Education Fund in honor of our new grandson, Samuel Benjamin. It was very thoughtful.

RELIGIOUS SCHOOL REMINDERS:

Tuesday, April 1:

Religious School Resumes

Sunday, April 6:

Hei class special program:

American Jewish Committee presents,

Through the Eyes of a Friend - the story of Anne Frank, 10:45am

Tuesday, April 9 and Wednesday April 15:

Bet class C.A.F.E. program with guest artist, Inbar Bibring: Seder Plates

Sunday, April 13:

Gimel Class JET:

"*Jews Eating Together*" social gathering:

Sunday, April 20 and Sunday, April 27:

PASSOVER, NO RELIGIOUS SCHOOL

PLEASE NOTE THAT THERE WILL BE REGULAR HEBREW SCHOOL SESSIONS DURING THE INTERMEDIATE DAYS OF PASSOVER:

Tuesday, April 22 AND Wednesday, April 23.

Friday, May 2:

BET CLASS SHABBAT DINNER,

6:30PM, followed by SERVICE, 8:00PM

Sunday, May 4:

CHAI SCHOOL ORIENTATION, 11:15AM
for HEI students and parents.

Join us as our Chai School Chairperson, Linda Kohn and her committee hosts an orientation to our **CHAI SCHOOL** program. Learn about the core curriculum, electives, new pre-college program, special programs (speakers, artists, theater presentations and workshops) and the role of the Toranim in our school. Looking forward to seeing everyone there!!

Please note: All Hei students will have regular school session on that day, 9:00am-12:05pm.

Sunday, May 4:

SECOND GRADE PARENTS, 10:05 am-10:25 am.

Next year your children will begin a new phase of our Religious School. Please join us for an orientation to our ALEF curriculum, class schedule, junior congregation requirements and discussion about your role as parents.

NURSERY SCHOOL NEWS PHYLLIS DENENBERG, DIRECTOR

REGISTRATION IS GOING ON FOR ALL OUR SCHOOL AND CAMP PROGRAMS & MUCH MORE!

I would like to thank Rabbi Wolkoff, Bnai Tikvah, the shul boards, Ann Kanareck and the Nursery School staff for honoring me and my husband Elliot with ads and donations in the dinner journal for MAYHS (Moshe Aaron Yeshiva High School). We were acknowledged for our community service.

Registration for camp and school is ongoing.

Our Day Camp's new Assistant Director this summer is our very own Mrs. Allison Schechter. She currently teaches the Monday 2 ½ yr. class and assists the other four days in the classes for 3 yr. olds.

Our second Pre-K class is filling up! Please tell your friends who may be interested, to register as soon as possible!

Our new **Pre-K Plus** class is open for registration. This class is designed for the older pre-schooler. **Pre-K Plus** is a kindergarten readiness program designed to offer pre-kindergarten children an extra year of growing time. Parents who select this program usually do so because they believe their child is not completely ready in all the social and emotional developmental areas in order to have a most successful kindergarten experience.

Pre-K Plus will offer developmentally appropriate learning activities for children who need a little "more" - more cognitive skill building, more motor skill building more social skill building and more opportunities to prepare for Kindergarten.

Children are also eligible for this program if they missed the enrollment cut-off date for kindergarten in their township. Please contact the Director to discuss your child's circumstances and eligibility. All children must have attended a Pre-K program at the JCC or another preschool prior to enrolling in the Pre-K Plus program.

This class also emphasizes emergent literacy (including sight words), writing, alphabet recognition, and phonemic awareness through activities that involve the whole child. Lesson plans are taught with a hands-on approach. They also include basic math concepts, number recognition and cause and effect.

Children have many opportunities to experiment, predict, and problem solve. The open-ended approach stimulates creativity in many ways

beyond the traditional teacher directed activities at this age level.

Reminder: Wednesday, April 9th is Rabbi Wolkoff's parenting class.

Our school is preparing for Pesach. Soon everyone will be cleaning and sweeping just like their parents do at home. The children will be taught the FOUR Questions—the Ma Nishtanah. Why is this night different from all other nights? The answer to those questions will be learned in the story of Passover when the Jews were slaves in Egypt and eventually made their "Exodus" into the desert.

Each class will have their own seder. Projects are being made to enhance the seders. Parents are invited. Save the dates! The Pre-K class and both 3 year old classes will have their seders on Wednesday, April 16th. The 2 ½ year old class will have theirs on Thursday, April 17th. Invitations will be sent home soon.

School will be closed for Pesach vacation from Friday April 18th through April 27th. Classes will resume on Monday, April 28th.

On behalf of all of us at the JCC Nursery School, we wish you a "Chag Kasher Visameach"!

Phyllis Denenberg

Salute to Israel Day Parade

Israel at 60 :

***celebrating the past and
inspiring the future!***

Sunday, June 1, 2008

EVENTS & INFORMATION



LEAD. ACT. CHANGE. Panim – Summer Jam Activism and Judaism in Washington DC!

The Jewish Federation of Greater Middlesex County is proud to announce a grant from the Senator Laurence and Edith Weiss Jewish Activism Endowment for Panim - Summer Jam!!

This \$4,000 grant will be awarded to one to two Middlesex County high school students who will enter grade 10, 11 or 12 in the fall of 2008.

Held on the campus of The George Washington University in Washington, DC from June 30 - July 27, Panim provides the opportunity to participate in meaningful (and fun!) community service projects, explore DC through field trips, study Jewish texts and values, and hear legislative updates from leading experts on domestic and international policy issues.

Tuition includes room and board, kosher meals, field trips and entertainment.

Potential applicants should apply today!

Visit www.dcjam.org, call 301-770-5070 or email summerjam@panim.org to request an application. Send a copy of the approved application to Federation for scholarship consideration!!

Please pass this information on to a child who would benefit from this outstanding program!

Yom HaShoah Observance

continued on page 11

- Author Dr. Shirley Wachtel, a second generation survivor who wrote "My Mother's Shoes – the Story of Blima,"
- Mrs. Barbara Moorman, whose parents saved 36 Jews during the war, including Ricklis member Ilsa Loeb
- Mr. Bill Schrimmer, whose family fled Germany in 1939, only to find mistrust and incarceration in England.

The Yom HaShoah Observance will begin promptly at 1:30; however, there will be Yahrzeit candles available for lighting at 1:00. Please join us for an unforgettable afternoon.

B'NAI TIKVAH YOUTH

2008 Chocolate Seder

Sponsored by the *Central New Jersey Council Jewish Committee on Scouting*

Where:

CNJCS Service Center –
4315 US Highway 1, Monmouth Junction, NJ

When:

Sunday, April 6th 12:00 PM – 1:30 PM

Cost:

\$6.00 Youth

\$3.00 Adults

\$1 per registration goes towards the Ken Apostolico Memorial Campership helping to send a kid to summer camp.

JCOS Yarmulkes will be available for sale

Religious awards workshop will be held afterwards from 1:30PM – 2:30 PM

See the Flyer in this issue for details.

7 West Church Street
Milltown, NJ 08850
732-729-1999



- Old fashioned candies
- chocolates
- Sugar-free assortment
- kids novelties
- custom favors and gifts

Something for everyone!

B'NAI TIKVAH YOUTH

ENCAMPMENT 2008

Save the Date August 18-25 for Encampment for youth entering grades 6-12th.

You can get the papers to register at:

<http://www.hagalilusy.com/hagalilnew/Documents/Encampment%20Brochure%2008.pdf>
or the Synagogue USY & Kadima Bulletin Boards.

KADIMA

Our Kadima Chapter had a Battle in The Gym last month & opened the event to welcome potential new members that haven't joined the group yet. We all had a great time playing Dodge ball & also had a Basketball tournament. It isn't too late to give Kadima a try!

April 3 - Chill Night

in the Youth Lounge from 7-8:30 pm.
Snacks will be served. Play air hockey, listen to the juke box or just chill w/ your Kadima friends.

April 13 - Passover Chocolate Seder & a Pool Party

with a Pizza dinner
at the Hightstown High School,
25 Leshin Lane from 4-6pm
w/ the East Windsor &
East Brunswick Chapter.
RSVP by 4/7.



April 28 - Laser Tag

at Sports & Stuff,
10 Alvin Court, East Brunswick from 6:45-7:45.
The cost \$12.00. RSVP by 4/27.

May 2-4 - Regional Spring Convention

at the Ramada in East Hanover for those attending!

U.S.Y.

Our USY Chapter has 13 members attending the Regional Spring Convention. Way to go with keeping our Chapter Strong at Regional Events! Please start to think about if you are interested in running for a USY Chapter Board Position.

April 4-6 - Regional Spring Convention

for those 13 members attending.

April 13 - Paintball at All Star Paintball

12 American Way, Spotswood from 2-4pm.
The cost \$20 & bring extra money for extra paintball.

A signed waiver is required to play
<http://www.allstarpb.net/waiver.html>.
RSVP by 4/7.



May 1 - Laser Tag

at Sports & Stuff,
10 Alvin Court, East Brunswick from 6:45-7:45.
The cost \$12.00. RSVP by 4/27.



Contact me with questions or concerns throughout the year!

We are always welcoming new members to Kadima & USY, please join us for an event in the Synagogue. Applications are available on; <http://bnaitikvah.com/youth.html> or our Bulletin Boards in the Synagogue.

Jordana Andersen (732) 422-7457

Jorde1174@aol.com



BORAIE
DEVELOPMENT LLC

120 Albany Street, Suite 305
New Brunswick, NJ 08901
Tel: 732-846-3636

COLLEGE RESEARCH CONSULTANTS
SPECIALIZING IN COLLEGE ADMISSIONS

DAVID MASON, Ed.M.

229 VALENCIA DRIVE
MONROE TWP. NJ 08831
Phone / Fax
(609) 301-8399
dmasoncrt@hotmail.com

B'NAI TIKVAH COMMUNITY



COMING ATTRACTIONS

- April 3** Sisterhood/Adult Education program – Jewish Americans, Part 1 at 8 pm
- April 6** Sisterhood/Adult Education program – Jewish Americans, Part 2 breakfast at 9:30 am followed by documentary
- April 8** Sisterhood/Adult Education program – Jewish Americans, Part 3 at 8 pm
- April 6 & 13** Gift Shop Passover Bazaar – see ad for April specials
- May 12** Save the date: Sisterhood elections and dessert at 8 pm
- May 21** Author Susie Fishbein is here!
- June 13** 2008-2009 Sisterhood Board Installation and Dinner

JEWISH AMERICANS, The “Jewish Americans” series, recently broadcast on PBS, surveys the 350 year history of the Jewish community in America. But it is far more than simply an historical catalogue. It brings alive the fundamental issues of identity and assimilation that remain the hottest topic in Jewish life today. We will view the series in three parts, and reflect on the impact of these historical themes on our own life. This series is co-sponsored by the Sisterhood and the Adult Education Committee.

Save these dates for the “Jewish Americans” series:

Part 1: Thursday, April 3 at 8 pm

Part 2: Sunday, April 6 at 10 am
(9:30 breakfast -movie begins at 10)

Part 3: Tuesday, April 8 at 8 pm

SOCIAL ACTION For our April 6 meeting, we will be collecting Kosher for Passover food to be donated to JFVS for their annual Passover food drive. Thank you, in advance, for your donations!

PASSOVER FLOWERS

Enjoy a beautiful basket of flowers at your seder. They make a great hostess gift, too.

See the insert for details.



PASSOVER WINE PICK-UP If you ordered Passover wine, you can pick up your order in the Judaica Gift shop on April 14, 15 or 16 between 5:30 PM and 9 PM.

BOOK KEEPER WANTED: We are currently looking for a book keeper for the Judaica Gift Shop. If you have book keeping experience, and are interested in the position, please contact Serena Blackin at 732-390-9515.



HENRY S. “HANK” KLEIN
Sales Associate

Greater Princeton Office
33 Princeton Hightstown Road
Princeton Junction, NJ 08550
Office: 609-275-5101
Fax: 609-275-5925
Cell: 732-672-1949
Direct: 609-936-2531
Henry.Klein@longandfoster.com



COME GROW WITH US... Add your name to our TREE OF LIFE

Located in the
Synagogue's main lobby.



Contact Madeline Gaynor
dietmom27@aol.com
732-297-4240

B'NAI TIKVAH COMMUNITY

MEN'S CLUB

Sunday, April 13th, 10:00 AM

Monthly Meeting

Presenter – H. Howard Goldstein, MD

Diabetes and Endocrinology Associates
Hamilton, NJ

All monthly meetings include our traditional breakfast buffet consisting of bagels and lox, etc. There is a \$4 charge for the breakfast. Our meetings are always open to anyone. Please remember to RSVP as soon as possible. RSVP's insure that the food to be purchased will be adequate for those who do show up.

PLEASE RSVP...

Ed Birch

EdBirch51@comcast.net

50plus

Next Meeting:

Tuesday, April 29, 1:00 PM

The Fifty Plus group will meet on Tuesday, April 29. at 1p.m. in the Social Hall of the Synagogue.

Enjoy an afternoon of nostalgia. Members and guests are encouraged to bring memorabilia of our younger days such as photos and family keepsakes. We will be presenting them for discussion.

Prospective members and guests are invited to participate. Refreshments will be served. For further information about the group please call;

Doris at 609-860-1498 or
Annette at 732-297-3562

**“My children don’t have to
worry about me anymore...
I’m going to live at
The Martin and Edith Stein
Assisted Living Residence.”**

“Here, I still have my privacy,
great care is always close by, I have
lots of new friends, I’m able
to practice my faith and
my kids have peace of
mind. That’s important
to me.”

- Luxury studio and one-bedroom apartments
- Kosher dining
- Linen, housekeeping and transportation services
- Round-the-clock, on-site licensed nursing
- Assistance with dressing, bathing and medication
- Stimulating cultural, educational, social and religious programs

Call 1-800-574-5760 for more information
or to arrange a no-obligation personal tour.

THE MARTIN and EDITH STEIN
ASSISTED LIVING RESIDENCE



at THE OSCAR AND ELLA WILF CAMPUS FOR SENIOR LIVING
350 DeMott Lane, Somerset, NJ 08873 | www.steinresidence.org

Another Point of View

continued on page 6

not understanding the principle of the electric refrigerator, asking “where do they put the ice?”

The ice box became popular in northern parts of the country during the nineteenth century. There was an active ice house industry built around the frozen lake ice. The ice was cut by hand saws and stored in insulated ice houses. It was then shipped by train to distributors and local vendors for retail sale to homes and restaurants.

This “luxury” was not always available in rural parts of the country, and almost not at all in warmer areas. Fresh meat had to be cured and dried (called jerky) or cooked and eaten promptly. Many rural people ate leftovers with the consequences thereof. Food poisoning and diarrhea was one of the most frequent causes of death prior to the popular use of the ice box and refrigerator.

In our home, for reasons of Kashruth, it was critical to keep the meat and dairy items separated in the limited space around the block of ice in the upper section. Today, electric refrigerators are so ubiquitous, that in the some very Orthodox homes, there are two refrigerators, one for milchig and one for fleishig.

Just like in the Polish Shtetl. Right?

B'NAI TIKVAH COMMUNITY

SOLOMON SCHECHTER DAY SCHOOL OF B'NAI TIKVAH

An evening with...
DR. RUTH WESTHEIMER
HONORING LINDA & HENRY SALMON

Dear Federation Community,

You are cordially invited to attend this emotional benefit honoring Linda and Henry Salmon, featuring Dr. Ruth Westheimer! Come hear renowned psychoanalyst Dr. Ruth tell her dramatic life story, from escaping Nazi Germany to fighting valiantly for Israel's independence. Of course she'll also have plenty to say about her education and unique, successful career. Additionally, please join us as we celebrate two of our school's most prominent leaders, Linda and Henry Salmon, who have led and continue to have a profound and defining impact on our school.

Thanking you in advance,

Lee Livingston
President
Board President of Greater B'nai B'rith

Will Schafer
VP of Fundraising
Assistant Executive Director of B'nai B'rith

Michael A. Kaufman
Executive Director
Director of Jewish Education of B'nai B'rith

WEDNESDAY, APRIL 9, 2008

| | |
|--|---|
| 6:00-7:00 PM PROGRAM - 5:00 PM Cocktails, Dinner, Photo with Dr. Ruth, Presentation to Honorees, Special MAH PROGRAM | 8:00-9:00 PM PROGRAM - 8:00 PM Dr. Ruth Speaks Address with Question and Answer, Dessert, Israeli Dancing, Silent Auction |
|--|---|

East Brunswick Jewish Center, 311 Rye Lane, East Brunswick, NJ 08831
 Call 732-236-7471 for more details or visit us at www.bntikvah.org
A benefit of the Jewish Federation of Greater Middlesex County, United Jewish Federation of
 Greater New York, and the Great Synagogue of Greater New York - The Great Synagogue

President's Message

continued from page 5

(I remember serving as Gabbi Shanee at your interview and I thought...wow without a yad, either he is really trying to impress us or he is that good) your openness to change without compromising integrity, and your warmth are all added on to so many other qualities that you are, already installed in our hearts, in our souls and in our lives.

So why are we here tonight? Clearly it is not just for the dessert, at least not for all of us. And it isn't just because Jeff and the committee worked to make this so meaningful. In some ways this might seem anti climactic . But we are here because the installation of a Rabbi is so much more than the signing of a legal document...so much more than a piece of paper. Yes, contracts and legal documents are important, particularly in today's litigious world, but this is an historic life cycle event in the history of our congregation, our spiritual home and family, and of our new Rabbi, and it is cause to celebrate, to reflect on our past, plan for our future and to give thanks to God.

Tonight, we won't be signing a contract, the Rabbi and I did that in August, and we won't be giving gifts or even picking out the new china. We will, I think, be signing an imaginary Ketubah, symbolizing the joining together of a community of Jews and non-Jews, and our new Rabbi who joins Cantor Rockman to provide our spiritual leadership. I truly appreciate that each and everyone of you values this commitment, and values BT enough to join with your family to celebrate this evening.

And so now, it's official!

Custom Eyes

Wayne Gonchar
 Optician

**Eyewear is a great accessory...
 It can change your appearance...
 Your personality!
 Come visit us!**

HOURS: Mon., Tues., Wed., Fri: 10-6
 Thurs: 10-7:00 Call for Weekend Hours

647M Rt. 18 • East Brunswick
 (A & P Shopping Center & Arthur Street)
732-613-EYES (3937)

SPECIALIZING IN WATER HEATERS

INSTALLATION & REPAIRS
 NEW CERAMIC TILE
 DRAIN CLEANING
 SUMP PUMPS

KITCHENS & BATHS
 GARBAGE DISPOSALS
 APPLIANCE HOOK-UPS

PARK ACRES
PLUMBING & HEATING
 KENDALL PARK
 732 297-7538
 Harold Small Lic. #5648

Owner will personally come to your home or business
 -Over 40 years experience-

We recommend Bradford White Water Heaters

BRADFORD WHITE

B'NAI TIKVAH COMMUNITY

SUPERMARKET GIFT CARDS **SPRING SWEEPS' MONTH**

Happy Springtime 2008 style. Unless you've been living under a rock or in a cave, then you know what happens this month, right? Correct! Spring cleaning time! Yes, it's time to clean the hearth and home in preparation of Pesach/Passover. So get out all of your cleaning products and start scrubbing, scouring and shining. That first Seder is Saturday, April 19. Time is running short.

If you are in need of cleaning products, don't despair. AS IF... Whether you actually perform these tasks yourself or are fortunate enough to have hired help who use your products (whew! - take a breath), remember: your favorite supermarket sells these products as well as the foods in your life. What's better than going to A&P, Acme, Pathmark, Shop Rite, Stop & Shop, and Whole Foods not only to purchase foods, but to also buy your cleaning products, too? Wow, what a neat idea – one stop shopping. You're in; you're out – BADDABING! When you go shopping for your Pesach/Passover provisions, other foods and cleaning products, take along a sufficient amount of Supermarket Gift Cards (SGCs).

As your monthly reminder, here's how to purchase your supply of SGCs:

- Stop by the committee's table on Sunday mornings during religious school;
- Visit the synagogue during business hours;
- Order on-line at bnaitikvah.org (order form is on-line, too);
- Contact one of the following committee members:
 1. Rachel Ruchlin 732-329-2189
 2. Bobby Bergman 732-246-7285
 3. Ann Rosenzweig 732-249-9141
 4. Jay Scheuer 732-940-8473



To order Whole Foods call Rachel for information on how to order. You cannot use credit cards; only acceptable payments are cash or check.

While at it, when buying SGCs why not also purchase gift cards from Lox, Stock & Deli (LS&D)? Get these cards the same way you get the other SGCs. Like Whole Foods only checks and cash are acceptable forms of payment.

It just occurred to me: a shopping expedition using SGCs. First, you dine at LS&D and then you go to your favorite supermarket to buy your provisions. What another fabu idea! Not everyone enjoys food shopping, but chomping on a corned beef sandwich and a crunchy kosher pickle might put you in a better mental state for the less "appetizing" chore. Additionally, experts agree that a person shouldn't go food shopping on an empty stomach anyway. Dining first at LS&D might prevent you from straying off your shopping list. You'll spend less on unnecessary items, too. You can claim this as your own idea if you wish.

From the Feinstein Family to yours:
HAG SAMEACH and HAPPY SPRING!!

Linda Feinstein



Bonnie Kudwitt continues to list and sell items on eBay.

Any donations are welcome.
All proceeds go to B'Nai Tikvah.
If it can fit in a box she can sell it.
Drop items off in the office.

We have raised over \$1,000.00
Call Bonnie with any questions.
Beedirect@aol.com (732) 422-7276

COMMUNITY

TODAH RABBAH

We would like to thank the following volunteers for making February birthday calls:

Madeline Gaynor
Bill Greenberg
Meyer Ketofsky
Mae Rubinstein
Janet Szpiro

Lynne WeissMarshall would like to thank Lisa & Gary Warner for the beautiful picture to decorate her office.

We would also like to thank all the volunteers who work to make our synagogue a welcoming and functional place that can provide the services and opportunities that B'nai Tikvah has become known for.

DONATIONS February 15 through March 14

The following are Contributions to our B'nai Tikvah Funds:

Yartzeit:

Sherry Valan,
in loving memory of Toni Ethel Lager
Gloria & Fred Landsman,
in memory of Ida Coon
Wendy & Ira Heisler,
in memory of Louis Breitkopf
Marilyn & Stephen Breitkopf,
in memory of Louis Breitkopf
Norlyn & Dennis Kessler,
in memory of Richard Schanen
Norlyn & Dennis Kessler,
in memory of Minnie Israel
Susan & Harry Rosenzweig,
in memory of Toby Rosenzweig
Sheila & Robert Hordon,
in memory of Leah Powers
Fern & Allan Katronetsky, in memory of
Joel Gerbman's brother, Allen
Ellen & Gerald Platz,
in memory of Grace Platz
Melanie & Richard Margolis,
in memory of Morris Siegel
Gloria & Fred Landsman,
in memory of George Coon
Sandra & Franklin Cohen,
in memory of Lillian Smith-Cohen

Rabbi's Discretionary Fund:

Anonymous
Susan, Andy and Daniel Shapiro,
in appreciation of the support you
gave to the Pal family
Florence Lakin, in memory of Elaine
Frumkin's beloved sister, Norma Sherman
Elaine & Alvin Brackup,
in memory of Dorothy Schnitman
Laura & Lewis Elfenbein,
in memory of George Eichen

Cantor's Discretionary Fund:

Susan, Andy and Daniel Shapiro, in
appreciation of the support you
gave to the Pal family

Building/Capital Improvement Fund:

Expansion Fund:

Allison & David Nagelberg

General Donation:

Judith & Laurence Gold,
in memory of Allen Gerbman
Edith Rothman,
in memory of Allen Gerbman
Andrea & Steve Katz, in honor of the
Bat Mitzvah of Sarah Safeer
Adele & Morton Leader,
wishing Alvin Brackup a speedy
recovery and good health

Amy Feinman-Behar Memorial Fund:

L'Dor VaDor Concert Fund:

Library Fund:

Family Shabbat Fund:

Sylvia Shore Katz and Terry Katz, in
appreciation of Bobbi Binder teaching
their son Andrew Torah Trope

Shabbat Luncheon Fund:

Renee & Steve Levin,
in honor of all the Minyon Leaders
Marcia & Jeff Schwartz,
in honor of all the Minyon Leaders
Susann & Kevin Krane,
in honor of all the Minyon Leaders
Lisa & Leon Suttner,
in honor of all the Minyon Leaders
Joyce & Joel Gerbman,
in honor of all the Minyon Leaders



**Ages 2-1/2
thru
5 years old**

**Weekly themes, special programs,
sports, water play, arts and crafts, cooking and more!**

Summer Mommy & Me (12 - 24 months)

**Please call at 732-297-0295, email at nursery@bnaitikvah.org
or visit our website for more details**

DONATIONS February 15 through March 14

The following are Contributions to our B'nai Tikvah Funds:

Gale & Marc Dillman,
in honor of all the Minyon Leaders

Aaron Rosloff,
in honor of all the Minyon Leaders

The Spigner Family in honor of the birth of
Drew – grandson of Elliott & Nancy Danto

Renee, Steve, Noah, Benjy & Daniel Levin,
in honor of the birth of Nancy & Elliott's
Danto's grandson

Israel Youth Exchange Fund:

Sylvia & Erwin Lewis, in honor of Dana
Lewkowitz's Bat Mitzvah

Sylvia & Erwin Lewis, in honor of Sarah
Alexis Safeer's Bat Mitzvah

Jewish Festival Fund:

Renee & Steve Levin

Cynthia & Frederick Kleinbart

Ellie & Bill Greenberg

Eileen Robison

Sandy & Yitzhak Sharon

Mike Greenfield

Jodi & Steve Segalewitz

Barbara & Harvey Abramson

Andrea & Steve Katz

David Offenberger

Phyllis & Ed Rosen

Felice & Joe Ciccione

Arie Behar

Torah Restoration Fund:

Men's Club:

Social Action Fund:

Youth Fund:

Susan, Andy & Daniel Shapiro,
in appreciation of Cindy & Neal Gittleman's
help during Marna Pal's shiva

Fern & Allan Katronetsky, in honor
of Nancy & Elliott Danto becoming
grandparents to Drew Aaron

The Katronetsky Family, in honor of Sarah
Safeer's Bat Mitzvah

Leon Bible Fund:

Passport to Israel Fund:

Maxine & Mark Kasdin,
in memory of Saul Kasdin

Prayer Book Fund:

The Spigner Family
in memory of Allen Gerbman

Linda & Donald Lakin,
in memory of Norma Sherman (Elaine
Frumkin's beloved sister)

Son's of Tikvah Fund:

Suse Rosenstock Memorial Fund:

Caryl & Dave Distel, in recognition of Suse
Rosenstock's selection as "Woman of
Valor" by Sisterhood

Francine & Jack Weintraub, in loving
remembrance to a great lady, truly a
"Woman of Valor"

Makhela Fund:

Religious School Fund:

Renee & Steve Levin, in honor of the
birth of Ann & Jack Kanarek's grandson,
Samuel

Nursery School Fund:

Ritual Fund:

Tzedakah Fund:

Susan & Harry Rosenzweig,
in honor of Matt, Josh & Nate Rosen

Following are donations that were

made to Rabbi Wolkoff's Installation

Stuart & Debra Allen

Burton & Vicki Bauman

Jeffrey & Rose Berger

Alvin & Elaine Brackup

Dr. Alan & Elaine Breitler

Jeffrey & Karen Cohen

Larry & Dorothy Cohen

Marc & Gale Dillman

Roz & Phil Fischman

Gerald & Joyce Fishelberg

Michelle Frank

Stephen & Miriam Gordon

Bill & Eleanor Greenberg

Dave & Michele Greenfield

Michael Greenfield

Michael & Carol Ann Harkavy

Allen & Ilene Karp

Dennis & Norlyn Kessler

Morton & Adele Leader

Jerry & Ronnie Levine

Erwin & Sylvia Lewis

Scott & Stacy Lewkowitz

Irwin & Michele Millinger

David & Allison Nagelberg

Bruce & Adrienne Rogove

Ed & Phyllis Rosen

Aaron Rosloff

Harold & Ellyn Schneider

Yitzhak & Sandra Sharon

Randy & Michele Sherman

Douglas & Syndi Smoller

Steven & Shelly Talmud

Sherry Valan

Gary & Lisa Warner

Kenneth & Rochelle Wistreich

Contributions:

If you are interested in making a contribution to B'nai Tikvah, please fill out the form below and mail it to us at:
Congregation B'nai Tikvah, 1001 Finnegans Lane, North Brunswick, NJ 08902

In honor of: _____

In memory of: _____

On the occasion of: _____

This donation is being made by:

Name: _____

Address: _____

Telephone: _____

Please send acknowledgement to:

Name: _____

Address: _____

City, State, Zip: _____

Amount of your donation:

☐ \$18 ☐ \$36 ☐ \$54 ☐ \$72 ☐ \$118 ☐ Other \$

Please Allocate Donation to:

☐ Building / Capital Improvements Fund

☐ Expansion Fund

☐ Prayer Book Fund

☐ Cantor's Special Fund*

☐ Passport to Israel Fund

☐ Religious School Fund

☐ Torah Restoration Fund

☐ Rabbi's Discretionary Fund*

☐ Social Action Fund

☐ Ritual Fund

☐ Other:

☐ Yartzeit

☐ General Fund

☐ Library Fund

☐ Makelah Fund

☐ Youth Fund

☐ Nursery School Fund

☐ Tzedakah Fund

☐ Son's of Tikvah Fund

☐ Family Shabbat Fund

**Please send separate checks for each Fund*

B'NAI TIKVAH DIRECTORY

| TITLE | NAME | PHONE # | E-MAIL ADDRESS |
|----------------------------|---------------------|--------------|---------------------------------|
| Rabbi | Robert Wolkoff | 732-297-0696 | Rabbi@bnaitikvah.org |
| Cantor | Bruce Rockman | 732-422-0963 | Cantor@bnaitikvah.org |
| President | Ruth Anne Koenick | 732-828-8141 | President@bnaitikvah.org |
| VP Activities | Jeff Schwartz | 732-297-6365 | jeschwartz19@comcast.net |
| VP Administration | Gary Bergman | 732-246-7285 | Webmaster@bnaitikvah.org |
| VP Membership | Allison Nagelberg | 732-846-1464 | nagelberga@aol.com |
| VP School and Youth | Mark Jiorle | 732-803-6299 | mark@markjiorle.com |
| VP Ways & Means | Larry Cohen | 732-821-4376 | licdac@optonline.net |
| Recording Secretary | Bobbi Binder | 732-274-2797 | eemaof3@comcast.net |
| Financial Secretary | Mark Kasdin | 609-336-7068 | markkasdin@cooperindustries.com |
| Treasurer | Marc Dillman | 732-821-7392 | MarcD240@msn.com |
| Asst. Treasurer | Jeff Berger | 908-281-5413 | BergJJ@msn.com |
| Past President | Daniel Greenberg | 732-297-3780 | greenbergd@comcast.net |
| TRUSTEES | Stuart Allen | 732-821-1398 | StuDebAllen@yahoo.com |
| | Art Biderman | 732-297-6691 | ANB@fadavis.com |
| | Cindy Gittleman | 732-274-2253 | Gittleman@comcast.net |
| | Renee Juro | 732-960-1215 | RJuro@comcast.net |
| | Beth Schurman | 732-846-8692 | BethSchurman@yahoo.com |
| | Ruth Shindler | 732-238-6893 | ruthshindler@comcast.net |
| | Mark Sherman | 732-940-1110 | MSherman10@comcast.net |
| | Dave Spivak | 732-329-2145 | DSpivak@dsol.us |
| | Gary Warner | 732-422-9292 | GWarner28@comcast.net |
| | Paul Zankel | 732-254-6465 | PZankel@comcast.net |
| VOTING | Aaron Rosloff | 732-297-2233 | msro8@aol.com |
| Fifty Plus | Ed Birch | 732-821-6201 | EdBirch51@comcast.net |
| Men's Club | Linda Gottesman | 732-651-7953 | LFellen@comcast.net |
| Sisterhood | | | |
| Administrator | Lynne WeissMarshall | 732-297-0696 | Admin@bnaitikvah.org |
| Administrative Assistant | Roz Fischman | 732-297-0696 | Office@bnaitikvah.org |
| Adult Education | Reese Klemish | 609-716-7437 | Rees.Klemish@DowJones.com |
| | Helene Tinkel | 732-545-1135 | Htinkel@rci.rutgers.edu |
| Synagogue FAX | | 732-297-2673 | |
| B' nai Mitzvah Mentors | Cindy Gittleman | 732-274-2253 | Gittleman@comcast.net |
| Bikur Cholim | | 732-297-0696 | |
| Book Club | Shirley Engel | 732-297-3198 | shirleyengel@verizon.net |
| Cemetery | Bette Koffler | 732-329-6518 | BetteK-K@att.net |
| College Committee | Bonnie Eisenberg | 732-297-0696 | |
| Couples Club | Nadine Weg | 732-390-6606 | |
| Feedback Committee | Gary Tinkel | 732-545-7913 | gtinkel@mindspring.com |
| Fifty Plus Group | Doris Sandrowitz | 609-860-1498 | |
| Hakol Editor | Phil Welsher | 908-874-0959 | Hakol.CBT@gmail.com |
| Hakol Advertising | Ruth Shindler | 732-238-6893 | ruthshindler@comcast.net |
| Israel Bonds | Larry Cohen | 732-821-4376 | licdac@optonline.net |
| Israel Taskforce | Alan Kane | 732-418-1913 | akane@optonline.net |
| Judiaca/Gift Shop | Serena Blackin | 732-390-9515 | serena@blackin.org |
| Junior Congregation | Barry Safeer | 732-432-9622 | Safeer@comcast.net |
| Kadima | Jordana Andersen | 732-422-7457 | Jorde1174@aol.com |
| Leagrams | Lori Sookerman | 732-274-9599 | |
| Makelah | Alex Welsher | 908-874-0959 | awpants@gmail.com |
| Men's Club | Steve Katz | 732-329-0687 | skatz56@aol.com |
| New Beginnings | Joyce Gerbman | 732-937-5114 | |
| Nursery School Director | Phyllis Denenberg | 732-297-0295 | Nursery@bnaitikvah.org |
| Parent Advisory | Tammy Zimmerman | 732-398-1420 | TammybZim@yahoo.com |
| Passport to Israel Program | Keith Zimmerman | 732-398-1420 | Keith@kzplanning.com |
| Publicity | Bette Koffler | 732-329-6518 | BetteK-K@att.net |
| Religious School Principal | Ann Kanarek | 732-297-0295 | School@bnaitikvah.org |
| Ritual Committee | Marci Oslick | 908-874-0959 | marcioslick@yahoo.com |
| Room Rentals Manager | Sherry Valan | 732-297-0696 | Rentals@bnaitikvah.org |
| Supermarket Gift Cards | Rachel Shaneson | 732-329-2189 | rshaneson@aol.com |
| Sisterhood President | Phyllis Safeer | 732-432-9622 | safeer@comcast.net |
| Social Action Committee | | 732-297-0696 | |
| Softball League | Mark Kirsch | 609-356-0490 | MarkKirsch@comcast.net |
| USY | Jordana Andersen | 732-422-7457 | Jorde1174@aol.com |
| Webmaster | Gary Bergman | 732-246-7285 | Webmaster@bnaitikvah.org |
| Yahrzeit Plaques | | 732-297-0696 | Admin@bnaitikvah.org |
| Youth Committee | Mike Brown | 732-297-0594 | mbrown297@yahoo.com |
| | Dorothy Cohen | 732-821-4376 | DCohen1@CORUS.JNJ.com |

Keep our directory up to date. Updates & changes: e-mail Hakol.CBT@gmail.com, or call the editor at 908-874-0959

Sun

Mon

Tue

APRIL 2008

Wed

Thu

Fri

Sat

LAKEVIEW DAY CAMP



Premier summer camp for boys and girls ages 3 to 14
East Brunswick, New Jersey • LiVe Camp! LoVe Camp!



To learn more, call **732.821.8933**
and check out our website at

www.LakeViewDayCamp.com