

OUR MISSION:

TO FOSTER A VIBRANT EGALITARIAN JEWISH COMMUNITY FOUNDED IN THE RELIGIOUS CUSTOMS AND TRADITIONS OF CONSERVATIVE JUDAISM; OFFERING EXCELLENT JEWISH EDUCATION AND COMMUNITY ACTIVITIES FOR ALL AGES WITH COMMITMENT TO ISRAEL AND JEWISH COMMUNITIES THROUGHOUT THE WORLD

HAKOL

J'ACCUSE !

Inside this issue:

Hazzan's Voice	2
Activities At A Glance	3
President's Message	4
Schedule of Daily Services	5
The Office Voice	5
Membership Minute	6
June-August B'nai Mitzvah	7
Congregation Events / Info	7
Religious School	12
Nursery School	13
B'nai Tikvah Youth	14
BT Community	15
Contributions	24
Synagogue Directory	27
Calendar	28

HAKOL EXCLUSIVE !!
BOOKING PHOTO OF ABRAHAM



ABRAHAM TO STAND TRIAL, BAIL SET AT 1M SHEKELS

Trial date set for September 16th, 9:00 PM at the Congregation B'nai Tikvah Court
Top defense team assembled. Lawyer shouts "If the throats not slit you must acquit".
Trial to be followed by S'lichot services at 11:30 PM.

CHECK OUT OUR WEBSITE, WWW.BNAITIKVAH.ORG FOR EVENT UPDATES & SCHEDULES

ROSH HASHANAH
SEPTEMBER 22, 23, 24

S'LICHOT BEGINS
SEPTEMBER 16

SEPTEMBER MOVIE
USHPIZIN
SEE PAGE 8
FOR DETAILS

BECOME INVOLVED -
COMMITTEE
ACTIVITIES FOR '06-'07

OUR HAZZAN'S VOICE Cantor Bruce Rockman

Hineni: The Hazzan's Prayer

*Here I stand, deficient in good deeds.
Overcome by awe, and trembling in the
presence of Him who abides amid the
praises of Israel.*

These are the opening words of The Hazzan's Prayer, *Hineni*. As for all cantors during the high holy days, *Hineni* and *Kol Nidre* are the highlights of the liturgy. We ask God to accept our prayers and to forgive us and our congregation whether or not we are truly worthy of consideration.

I am writing today, August 4 Erev Shabbat, the Shabbat before my family and I retreat for a short vacation at the Jersey shore. I know that when we return from our trip we will all be in the back-to-school mode and here at B'nai Tikvah, the High Holy Day mode. Hadas, her staff and numerous volunteers will have everything ready. A new Rabbi will be here to serve and inspire us. Wedding, B'nai Mitzvah, and baby naming ceremonies will bring joy to our sanctuary and all will right for a healthy and prosperous new year.

But today is August 4, 2006, and today Israel is at war. I check the internet constantly, reading the latest news from Israel. Every time I look, the headline changes as the number of dead and wounded soldiers and civilians grows. The cost of this war is enormous. And here we are safely tucked away in our New Jersey homes.

We are a very generous congregation. You step up to the challenge every time you are asked. Our support of our sister city of Ramle, inspired one member to tell how proud he is to be a part of this congregation. Our support always makes a difference. We are also sympathetic and empathetic to all who experience losses. This war is particularly ugly. Hezbollah attacked Israel with its intention to destroy Israel and to wipe out the Jewish people, us.

Today, August 4, 2006, I read in the Jerusalem Post that Staff Sergeant. Omri Chaim Elmakayes-Ya'akobovitch, 20, from Ramle was killed in action. This hero's death is so close to home, he may have been one of the students that visited us in recent years, and may have befriended our children. A few days earlier, Staff Sergeant Michael Levin, born and bred in Philadelphia, died defending freedom and independence for his beloved Israel. "You can't fulfill your dreams unless you dare to risk it all," he wrote in his Nativ yearbook at the end of the nine-month leadership program, which first brought him to Israel in 2001. Michael Levin spent his summers at Camp Ramah in the Poconos but he left camp early this summer to rejoin his fellow paratroopers.

His words took on particular significance for the hundreds of friends, loved ones and family members who came to pay their last respects at Jerusalem's Mount Herzl military cemetery, to the 21-year-old paratrooper staff sergeant, who literally "risked it all" to fulfill his dream of living in Israel, serving as a paratrooper and defending the Jewish state.

Today is August 4, 2006. By the time you read this, it will be September, what will have happened in Israel? Will more young men from Ramle die? Will another young American perish

fulfilling his dream like Michael Levin? I'm afraid many more sad stories are yet to be told.

Hineni: The Hazzan's prayer is recited on each day of Rosh Hashanah and on Yom Kippor. I told my esteemed and very patient teacher Hazzan Leon Lissek, just before Pesach that I thought that I needed to master this prayer. I've been chanting and interpreting it for five years, but I just didn't feel that I was doing the words justice. We worked on and off for months on the music and my interpretation of the prayer. The words are very humbling, at times I doubt that I will ever do them justice, but I will not stop trying

**We cannot
stop trying,
but can and do
make a difference
as we help God
create a
better world.**

OUR HAZZAN'S VOICE

Hineni continued

to fulfill the essence of this awesome prayer.

Help me overcome every obstacle; cover all our faults with your veil of love.

We cannot try hard enough, we cannot do enough, learn enough in a lifetime to make this a perfect world. We cannot stop trying, but can and do make a difference as we help God create a better world.

Accept my prayer as though I were Supremely qualified for the task, imposing in appearance, pleasant in voice.....


For You mercifully hear the prayers of Your people Israel; Praised are You who hears prayer.

Worship the Lord in gladness; come before God with joyous song.

And for a peaceful New Year

Cantor Bruce Rockman

**Jewish Ritual Art ••• One of a kind,
hand painted & printed
Tallit, Chuppah, Covers for Matzah &
Challah**



To meet with the artist call:
Adria Sherman
609-799-8807
ArtbyAdria.com

COLLEGE RESEARCH CONSULTANTS

SPECIALIZING IN COLLEGE ADMISSIONS

- * SELECT THE RIGHT COLLEGE
- * SECURE FINANCIAL AID
- * PREPARE COLLEGE APPLICATIONS
- * LEARN INTERVIEW TECHNIQUES

DAVID MASON, Ed.M.

1398 AXEL AVENUE
NORTH BRUNSWICK, NJ 08902
PHONE / FAX (732) 247-1543
dmasoncrrc@hotmail.com

ACTIVITIES AT A GLANCE

Every Tuesday

8-10 PM Open Court Men's Basketball

Tuesday, Sept. 5th

7:30 PM Nursery School Parent Orientation

Wednesday, Sept. 6th

6:00 PM Kadima Meeting – Youth Lounge

Thursday, Sept. 7th

7:30 PM USY Meeting – Youth Lounge

Saturday, Sept. 9th

10:00 AM First Jr. Congregation Service -
Beit Midrash

Sunday, Sept. 10th

First Day of Religious School
10:00 AM Men's Club Meeting

Tuesday, Sept. 12th

7:30 PM New Beginnings Meeting

Wednesday, Sept. 13th

7:30 PM High Holiday Shabbat Training
Session All Welcome

Saturday, Sept. 16th

10:00 AM Jr. Congregation Service –
Beit Midrash
9:00 PM Slichot Program
11:00 PM Slichot Services

Sunday, Sept. 17th

10:00 AM Sisterhood General Meeting

Monday, Sept. 18th

6:00 PM Kadima Meeting – Youth Lounge
7:30 PM USY Meeting – Youth Lounge

Tuesday, Sept. 19th

1:00 PM 50+ General Meeting

Monday, Sept. 25th

7:30 PM RAC Meeting

Saturday, Sept. 30th

10:00 AM Jr. Congregation Service –
Beit Midrash

PRESIDENT'S MESSAGE Dan Greenberg

This September issue of Hakol is of course the one that precedes Rosh Hashanah and Yom Kippur, and with the High Holy Days only a few short weeks away, our professional staff and a myriad of volunteers are working tirelessly to make sure that all the details are arranged. But they sure didn't start just a few days ago.

During the summers, with people away on vacation or down the shore for the weekends, a different atmosphere pervades. The trains are a little less crowded, the roads less congested, and of course, we get fewer people coming to synagogue for both Shabbat and daily minyans. People take breaks from their normal routine, and pack as many extra activities as possible into their longer days.

But here at B'nai Tikvah, this summer has been a particularly busy one. Preparing for our one-year tenant in the school building, working hard to find a permanent and then an interim rabbi, maintaining our physical plant and more have kept our staff and our volunteers very well engaged throughout the summer. We owe them a big debt.

And while everyone on a committee enjoys working for the synagogue, they would never say no to an extra pair of hands. So please consider getting involved. Help plan an activity. Get involved in an event. Lend a hand wherever you'd like. There is a list of committees and contacts in this and every issue of Hakol – all you have to do is pick up the phone or drop a quick email. If you still need help figuring out who to call, get in touch with me and I will be happy to help you get talking to the right person. We could always use some more help.

To the entire B'nai Tikvah family, Caryl and I send our very best wishes for a Shanah Tovah U'Metukah. May you and your families have a Sweet and Happy New Year.

Danny Greenberg

HAKOL

The Newsletter of
Congregation B'nai Tikvah
JCC of North & South Brunswick
 1001 Finnegan's Lane
 North Brunswick, NJ 08902

Published monthly except for July and August. Submissions are welcomed about Congregation events, group activities, and other material relevant to the Jewish community.

All Submissions for HAKOL are due by the 15th of the preceding month

We recommend sending submissions and correspondence via e-mail to:

Hakol@bnaitikvah.org

All e-mail submissions are acknowledged via e-mail. You may also put submissions in the HaKol mailbox in the synagogue office. All submissions are subject to available space and editorial constraints. Please call Phil Welscher at 908-874-0959 if you have any questions.

SUBMISSION FORMATS:

Text:

Editorial submissions should be in MS-Word, AppleWorks, plain text, rich text format or typed directly into the body of an e-mail. No special fonts or graphics embedded in the text file will be guaranteed. Graphics and photos should be submitted separately, rather than inside other files or documents

Graphics & Images:

Advertisements should be submitted in one of the following formats: Quark 5.0 or earlier, Indesign CS1, PDF, EPS or TIFF, BMP or JPEG files may also be used. All text should be converted to black and white. All images should be converted to grey scale. All images submitted for scanning must be photo or photo quality images.

ORDER FORMS & FLYERS:

Submit order forms and inserts to be sent with the HaKol mailing to the editors by the 15th of the preceding month

FOR ADVERTISING INFO:

www.bnaitikvah.org/hakol.html
 HaKolAds@bnaitikvah.org
 or 732-846-8692

saskiamarina

PHOTOGRAPHY

We capture the spontaneity and spirit of your special occasion, recording your treasured moments in an unobtrusive manner.



Bar/Bat Mitzvahs
 Weddings • Family Portraits

To hear about our affordable package offers and see samples of our work, contact us today at 732•565•0554.

References available upon request.



www.saskiamarina.com

THE OFFICE VOICE Nitsat Hadas Elami – Administrative Director

Shalom,

A topic which often comes up in questions and in everyday life here at the Synagogue is that of maintenance. It is not the first time I am writing about it, but I think that at this point it will make sense to repeat what some people already know.

I don't know if most of you are aware that during the week there is only one person who performs all the cleaning and maintenance in the building. Most of you may see the weekend help that we have here which includes 2-3 people depending on the event and the day. During the week, one person, working very long days, is in charge of cleaning the main synagogue areas, bathrooms, kitchen, offices, etc. This same person also cleans the classrooms, often more than once a day when the same classroom is used by 2 or more different classes, and the school bathrooms. In addition to all the above, this one person is responsible for setting up for all the meetings and special school programs and is present when rental groups need access into the building. His maintenance tasks, in addition to all that, include replacing light bulbs, minor plumbing repairs and other repairs that are required in an active building such as ours.

It is a lot for one person to accomplish! The only way we can make it work, at least to the best of our ability, is by knowing the needs of the different

groups and organizations far in advance. In order for one person to accomplish all the setup and changeovers required, I need to know at the beginning of the week what meetings and events are in store. Then I try to use the same setups more than once or attempt to find easier ways to convert to another setup to free up time for other tasks.

On the weekends we have a little more help. The people who work here on the weekend are not here during the week. In order for me to instruct them on what needs to be done, I need to have the information in advance, so I will be able to communicate it to them. Every weekend Ed Molina, our maintenance company owner, receives a detailed instruction sheet from me with everything that needs to be done over the weekend. If I don't receive your requests on time, I cannot include them in my instructions.

This column barely scratches the surface of this topic, but with the beginning of the School Year fast approaching and the High Holidays following, I think that understanding the way we operate will help us do things better.

L'Shanah Tovah!

Hadas

ADVERTISING IN HAKOL

Each issue of HaKol reaches over 400 Jewish households. HaKol advertising is one of the most cost-effective way to reach your local Jewish community. HaKol advertisers get free hyperlinks to their websites at www.bnaitikvah.org. HaKol is published 10 times a year, monthly except for July & August.

2006-2007 HAKOL ADVERTISING RATES

Size	Art Dimensions (w x h)	Annual Contract: 10 Issues	Single Issue
Full Page:	8" x 10.5"	\$675	\$100
Half Page:	3.75" x 10.5" 8" x 5"	\$525	\$80
Quarter Page:	3.75" x 5"	\$400	\$60
Business Card	2" x 3.5"	\$300	\$45

Contact Beth Shurman or Stephanie Welscher at: HakolAds@bnaitikvah.org



SCHEDULE OF DAILY SERVICES

Sunday	9:00 AM Shahareet	7:30 PM	Mincha/Maariv
Monday		7:30 PM	Mincha/Maariv
Tuesday		7:30 PM	Mincha/Maariv
Wednesday		7:30 PM	Mincha/Maariv
Thursday	7:00 AM Shahareet	7:30 PM	Mincha/Maariv
Friday		8:00 PM	Kabbalat Shabbat
Saturday	9:30 AM Shabbat	*.** PM*	Mincha/Maariv

* As appropriate for the time of year

Babysitting available Shabbat morning 10:00 AM - 12:00 PM

A MEMBERSHIP MINUTE

Ruth Anne Koenig, VP Membership

Mazel Tov to:

- Bruce and Nan Kessler on the Bar Mitzvah of their son
- Ronald and Debra Sperling on the Bar Mitzvah of their son Keith
- Tod and Theresa Kamen on the Bar Mitzvah of their son Joshua
- Marc and Arlene Lassin on the Bar Mitzvah of their son Aaron
- David and Cindy Mevorah on the B'nei Mitzvah of their children, Alexandra, Jeffrey, and Jennifer

Condolences to:

- Emily Carey on the loss of her father Mark

Membership Strategic Planning Committee

Late last spring a small group of members met to begin the process of examining membership issues and long term planning. We discussed issues such as how membership both recruits and retains members, why people leave, what constituent groups are we not contacting, and reviewing the membership categories, as well as other relevant issues. We are also looking at our materials, both hard and electronic. The committee is comprised of Al Garten, Mark Jiorle, Allison Nagelberg, Lisa Suttner and myself.

The Strategic Planning Committee has recommended and the board has passed, two motions regarding membership categories that include a membership referral program and a category for nursery school families.

Membership Referral Bonus

We know that recruitment of new members is primarily based on personal relationships. People often join because friends and neighbors are members. In an effort to get the entire congregation involved with our ongoing membership drive, we are starting a Membership Referral Program. For every new member you bring in (up to four a year) that identifies you as the referral, and is a member in good standing for at least one year, you will receive 25% off your dues for the following year. The reward is not based on the amount of dues paid by the new member as that would be a breach of confidentiality for those on reduced fees. Just

think what you could do with that money...spend it on your children, have a wonderful spa day without your children, go to a Broadway show and dinner, increase your High Holiday pledge...the list is endless.

For more information, contact Ruth Anne Koenick at membership@bnaitikvah.org or at 732.828.8141

Nursery School Membership Category

The nursery school has a history of being an entry point for many of our members. Many of you joined as you and your children became friendly with other members. We hope that nursery school children will continue in our educational programs and to help that happen, this new membership category has been added. Any person/family that has a child enrolled in our nursery school can become a member of B'nai Tikvah with the first year free. All benefits of membership are available to these members.

BIKUR CHOLIM

The tradition of Bikur Cholim, or visiting the sick, is both a mitzvah and an important part of a synagogue community. It is a sign of compassion and caring for all of us to help with the needs of those who are ill, homebound or isolated. Helping others to stay connected to our community can bring a sense of dignity to everyone involved.

If you are interested in learning more about how to become a member of the B'nai Tikvah Bikur Cholim, please contact Ruth Anne Koenick at membership@bnaitikvah.org and turn down the Bikur Cholim tab on the activities card you will receive during Yom Kippur services.

Come to the first organizational meeting on Thursday October 19 at 7:30 pm.

Dave Liebmann



Home Handy Services, Inc.
"We do it all large and small"

Ph: 732-951-0700 Fax: 732-951-1113
Toll Free: 866-716-7085 Digital Pager: 973-719-7085

CONGREGATION EVENTS AND INFO

I GIVE . com, Do You?

Everyone knows about the Retail Scrip program (which did a record breaking volume last year) but, did you know there's other ways the Congregation can benefit by your everyday shopping?

IGive.com is one of them.

By joining and shopping via the internet at more than 100 sites like Lands'End, FTD.Com, AllJudaica.Com, B'nai Tikvah receives a percentage of what you spend.

This is an easy way for the Congregation to raise funds and as always, the more we raise via Scrip, the easier it is to keep Dues down.

IGive.com can be found on the "Shopping" page of our website.

www.bnaitikvah.org/shopping.html

SUMMER BLOOD DRIVE A SURPRISE SUCCESS

Slow but steady wins the day again!

We had four-dozen donors come in to donate on a hot summer's afternoon. From them we garnered 44-pints of desperately needed blood. And ten-pints came from five donors, using the ALYX program where they give two-units each.

Please make it a point to join us next time, Jan. 14th...we'll be showing the NFL Playoffs while you donate. You can always find out where other convenient drives are being held by calling;

800-bloodnj or visiting www.bloodnj.org.

Thanks to our hard workers: Phyllis & Ed Rosen; Aaron Rosloff; Lori Sookerman; Phil Welsher; and Shirley Engel.

Marty Engel, Chairman



(732) 329-2255

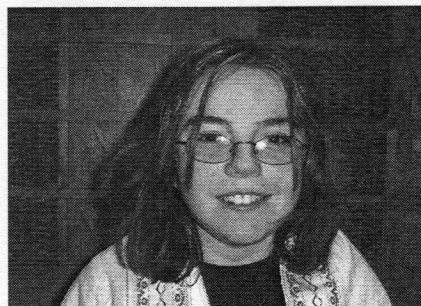
DR. STEVEN B. DICKERT

CHIROPRACTOR

58 Wetherhill Way
(Corner Georges Road)
Dayton, N.J. 08810

By Appointment

B'nai Mitzvah



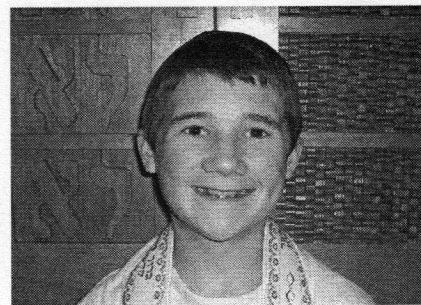
Sarah Feldman
August 26
Bruce & Victoria Feldman



Alissa Platz
September 2
Gerald & Ellen Platz



Ellie Tunison
September 9
Jack & Amy Tunison



Mathew Weinstein
September 16
Bruce & Robyn Weinstein

CONGREGATION EVENTS AND INFO

From The Webmaster

Keeping Informed

Over the summer months we added a dozen new subscribers to the CBTNewsletter. Over 370 families were kept up-to-date on the progress of the Rabbi Search Committee and were also notified of the rally in Princeton and our guest speaker in the early days of Israel's "Operation Change of Direction".

The Newsletter is for important messages about local events, appeals for tzedakah, special programs and services, shiva minyans, and other notices from the synagogue office.

Another benefit of being a subscriber, is having access to all posted meeting minutes since the year 2000 when the Newsletter was established.

Everything about e-mail communication at B'nai Tikvah is posted at www.bnaitikvah.org/click.html so, use the form on the website or send an e-mail to Office@Bnaitikvah.org to become a subscriber.

Instant News Updates

B'nai Tikvah now sports a running news ticker from the Jerusalem Post on our website's

home page. The ticker stops moving when you hover your mouse so you can click the desired headline to get the full story.

To get all the news about Israel from domestic and international sources, simply click the Israeli flag where it says "Breaking News From Israel". The page contains news and commentaries from around the world, in addition to suggestions on how you can get involved to support Israel.

Cub Scout Pack 18

Forming for September 2006

We need Cubs and Adult Leaders!

E-mail Steve Katz at
steve.katz@bnaitikvah.org

Learn more at <http://www.joincubscouting.org/>

SEPTEMBER MOVIE NIGHT:

Back by Popular Demand
just in time for the Holidays.

A repeat showing of
the award winning film

USHPIZIN

Thursday September 14th
right after minyan.

If you missed it,
now is your chance to see what
everyone was talking about.

If you've seen it before,
now's your chance to see it again!
See you then!

R.S.V.P. to:
Elliott.Danto@Bnaitikvah.org
or
Call Elliott at 732-297-6175

SAVE THE DATE & PASS THE WORD...

Happening at B'nai Tikvah! Crafts Fair/Vendors Market

Sunday, November 19, 2006
9:00am - 3:00pm

Food, Raffle Prizes,
Unique Shopping Experience!

For Information on Vendor Registration,
go to: www.bnaitikvah.org/craftform.html

Questions or want to help on the event?
e-mail: Activities@BnaiTikvah.org

CONGREGATION EVENTS AND INFO

Operation Isaiah

Our Jewish tradition impels us to set aside "the corners of our fields" for the poor and the stranger, so that they might share in the bounty of our harvest.

The exemplary response of the Conservative and other Jewish movements has enabled MAZON to make grants totaling almost 40 million, including more than 1 million to agencies in Israel.

The Conservative movement launched Operation Isaiah 17 years ago. Each year, congregants are asked to bring bags of nonperishable food to Kol Nidre services, for distribution to local food banks and to make monetary contributions to MAZON, to participate in a national Jewish response to hunger that helps impoverished people everywhere.

For more information about MAZON, a Jewish response to hunger, please visit;

www.mazon.org

7 West Church Street
Milltown, NJ 08850
732-729-1999



- Old fashioned candies
- chocolates
- Sugar-free assortment
- kids novelties
- custom favors and gifts

Something for everyone!

Solutions to Your Financial Needs

No matter what your future plans entail, Guardian can help you reach your financial goals. Make an intelligent choice.

Contact our office today!

*Long Term Care Insurance is not underwritten by Guardian.

Registered Representative of Park Avenue Securities LLC (PAS), 7 Hanover Square, New York, NY 10004. Securities products and services offered through PAS, 1-888-600-4667. PAS is an indirect, wholly owned subsidiary of Guardian.

PAS, member NASD, SIPC.

Disability income products underwritten and issued by Berkshire Life Insurance Company of America, Pittsfields, MA, a wholly owned stock subsidiary of Guardian. Products not available in all states. Product provisions and features vary from state to state.

LIFE INSURANCE
DISABILITY INCOME INSURANCE
RETIREMENT SERVICES
EMPLOYEE BENEFITS
INVESTMENTS
LONG TERM CARE*

For more information contact:
Keith Zimmerman
Agency Supervisor
609.452.8088



The Guardian Life Insurance Company of America
New York, NY (Guardian)



RAMLA MUNICIPALITY

Office of the Mayor

August 3, 2006

Dear Friend of Ramla,

As the bombing of Northern Israel continues, I wanted to thank you for your recent contribution to the town of Ramla. Your generous gift will allow hundreds of children from the north of Israel, forced to flee the recent bombings, to participate in a summer camp program here in Ramla at no cost to their parents.

Instead of spending their days in cramped bomb shelters, running low on food and other supplies, the children will be able to enjoy a full day of summer camp activities, including a daily lunch. Their parents will breathe easier, knowing their children are safe, supervised, and well cared for until the start of the new school year.

Your support for Ramla, and the State of Israel, comes at a challenging time. While the citizens of Israel pull together, the knowledge that you stand with us, emotionally and financially, allows us to accomplish our goal of keeping our entire population safe.

Thank you again for your contribution. We hope to see you on your next visit to Israel.

Sincerely,

Yoel Lavi
Mayor of Ramla

CONGREGATION EVENTS AND INFO

ALL IN THE FAMILY

USY would like to thank Alan Kane for giving us the opportunity to reach out to our sister families in Ramla.

USY is a proud contributor to emergency funds collected to support Israeli youth relocated in Ramla, Israel from northern cities.

Jason Marx - SA/TO Vice President of USY

Jazz Dance Classes

Classes for Kids and Teens

FIRST CLASS FREE

Classes begin Monday September 25th

Increase your rhythm, strength, flexibility, self-confidence, coordination, grace and have fun dancing

See the Flyer enclosed for details

Auditions for Sharim V'Sharot

Central New Jersey's Select Jewish Chamber Choir Sharim V'Sharot, Central New Jersey's 24 voice select Jewish chamber choir, is seeking new members for the 2006-07 season.

The choir is under the direction of Dr. Elayne Robinson Grossman, former director of New York's Rottenberg Chorale.

The choir is currently preparing for a program of Jewish music inspired by the First Amendment to the Constitution, which will be presented at Princeton University in November.

Sharim V'Sharot performs throughout the Philadelphia to New York metropolitan area.

Auditions will be held, by appointment, throughout September.

For more information please go to;

www.sharimvsharot.org

ERA Absolute Realty



Paula Kondioti
REALTOR-ASSOCIATE®

1600 Jersey Avenue
North Brunswick, NJ 08902

Office: (732) 220-6611 x46

Cell: (908) 208-3976

Fax: (732) 220-1451

PaulaKondioti@AbsoluteERA.com

www.PaulaKondioti.HomesOFNJ.com



Each ERA® Office is Independently Owned and Operated



RELIGIOUS SCHOOL REPORTS Ann Kanarek, Director

B'RUCHIM HABAYIM: WELCOME TO A NEW YEAR

As we head into 5767, we look towards the start of a new religious school year with renewed enthusiasm and great anticipation. As the years pass, we mark our Jewish lives through study, prayer, rituals and deeds. Each year our school teaches the constant values and themes that connect the Jewish people to God. We continue to seek ways that make the time-tested tenets of Judaism relate to the modern world in which we live. Yes, the principles, knowledge, and values stay the same but the methods and approaches to teaching are current, creative and exciting. The summer months have been spent in preparation for a year filled with the integration of updated curricular material and new enriching programs.

As in past years, our school continues to thrive. New projects and new activities are planned, new students enrolled and new teachers joined our staff. Changes take place, but some things do not change. We are here to bring the highest quality of Jewish education to our children and we resolve to remain warm, personal, and caring. We can only continue to do so by maintaining a close and strong relationship with our synagogue families. Please remember, that my heart and door remain open to you and your children. (Please note that my Office has been relocated to the old wing) Your questions and concerns regarding your child's Jewish education are my concerns, as well. I urge you to keep the line of communication between us open. As we work together, we can help ensure our children's Jewish future.

From my family to all of you, best wishes for a year of health, happiness and shalom.

L'Shanah Tovah!!

PARENT RECEPTION DAY SUNDAY, SEPTEMBER 10

All are welcome, especially new families, to come together for an orientation to our Religious School program and to meet the faculty. Parent reception and orientation for our Kindergarten, First grade, Second grade, Alef, Bet, Gimel, Dalet and Hei families will be held on the first day of school Sunday, September 10, at 9:00am or 10:40am for a brief reception, discussion of our school program and Junior Congregation, parent volunteer opportunities and exciting upcoming events.

I look forward to meeting and greeting you!!

RELIGIOUS SCHOOL REMINDERS:

Sunday, September 10:

Parent Reception Day and
First Day of School for grades K-7.

Sunday, September 17:

First day of Chai School

Sunday, September 24:

No Religious School, Rosh Hashanah, Day 2

Sunday, October 1:

No Religious School, Erev Yom Kippur

Monday, October 2:

No Religious School, Yom Kippur

Sunday, October 8:

No Religious School, Sukkot

Sunday, October 15:

Simchat Torah Special School Session

Sunday, October 22:

Social Action Program, Hiddur Mitzvah

Tuesday, October 31:

No Religious School, Staff Development Day

Fulfilling the Promise

A campus of healthcare and related personal services all working together.

THE JEWISH HOME and HEALTHCARE CENTER THE WILF REHABILITATION and RECOVERY CENTER THE MARTIN and EDITH STEIN HOSPICE

THE MARTIN and EDITH STEIN ASSISTED LIVING RESIDENCE THE LENA and DAVID T. WILENTZ SENIOR RESIDENCE

For additional information, please call 732-873-2000

THE OSCAR AND ELLA WILF
CAMPUS FOR SENIOR LIVING



380 DeMott Lane, Somerset, NJ 08873 | www.wilfcampus.org



NURSERY SCHOOL NEWS *PHYLLIS DENENBERG, DIRECTOR*

Camp JCC's Summer of Success

I hope you all had a wonderful summer. Camp JCC was a resounding success. We had 30 campers for our inaugural year. There were 3 bunks; The Little Lambs (2 1/2 and 3 yr. olds), The Grizzly Bears (4's and 5's) and The Mighty Ducks (4 and 5 yr. olds).



Having fun at swim

We had different themes every week, with special programs on Wednesdays. We had a magician, Mad Science and a trip to Terhune Farms to name a few. Weather permitting the campers had water play everyday. There were two pools and a sprinkler to keep us cool. We had yoga with Jul and dance/creative movement with Morah Helena. There was cooking, baking, sports and arts & crafts.



At the farm

School is just around the corner!

On Tuesday September 5th at 12:00 noon until 1:30 PM parents are invited to bring their children to meet their teachers and see their rooms. Orientation for parents is that night (September 5th) at 7:30 in the sanctuary. The first day of school is Wednesday, September 6th. We welcome our students and our staff. I would like to introduce some of this year's staff :

Amy Smith, Teacher Mommy & Me & Toddler Fun Club Programs; Brenda Osofsky TFC, Assistant.

Jul McCormick, Teacher Mommy & me Yoga programs; yoga for 2's, 3's & pre-K

Miriam Ziegler, Teacher 2 1/2 year olds; Amy Cohen, Assistant

Carol Winter, Head Teacher 3 year olds; Brenda Sherman and Heather Gable, Assistants, Ina Horn, Head Teacher Pre-K; Maria Lesko, Stacy Lewkowicz, Assistants

We are looking forward to a great year!!

Phyllis

BOXTOPS4EDUCATION! EVERY ONE CAN HELP!

Did you know the #1 school collected \$21,361 worth of box tops? The #10 school \$8,573! Let's all chip in together and help the Religious School collect more than ever to help the students with their education.

Check the website:
www.boxtops4education.com for interesting details, news and \$\$ off coupons.

Companies and Products you too can collect easily to help the school are;

General Mills cereals, Pillsbury and Yoplait products, Betty Crocker and Old El Paso, Fruit Roll-Ups, Ziploc, Viva, Scott and Cottonelle.

**CLIP THOSE BOX TOP COUPONS
AND DROP THEM OFF IN
THE SCHOOL OFFICE OR THE MAIN OFFICE.**

B'NAI TIKVAH YOUTH

KADIMA

HEY Kadimaniks!! Get ready to have a BLAST as we kick the year off right at KADIMA'S KICK OFF HULLABALOO Wednesday, September 6th, 6PM-7:30PM

GAMES . . . PASTA SUNDAES
ICE CREAM SUNDAES . . . CONTESTS . . .
AND MORE!!!!!!!

Please bring money for raffle prizes, proceeds will benefit the Yad B'Yad Tzedekah project.

RSVP to Rachel Sakofs, kadima@bnaitikvah.org by August 25th.

Monday, September 18th will be BINGO n' DELI NIGHT from 6- 7:30pm.

RSVP to Rachel Sakofs, kadima@bnaitikvah.org by September 12th.

Other programs that will be happening this year include rock climbing, game nights, a trip to GLASSWORKS, corn maze trip, movie nights, and self-defense workshops.

If you haven't signed up to become a member or have Jewish friends looking to join, please check out the synagogue website;
<http://www.bnaitikvah.org/youth.html>
to download an application and code of conduct.

USY & Kadima Applications

USY and Kadima applications are available on B'nai Tikvah's website under Youth Groups or <http://www.bnaitikvah.org/youth.html>. Send in your applications. Students in grades 6-8 are eligible for Kadima and students in grades 9-12 can apply for USY.

Check out USY and Kadima on B'nai Tikvah's website for upcoming events in 2006-2007.

Visit: <http://www.bnaitikvah.org/youth.html>

Israeli Honey for Rosh Hashanah

Youth Committee is selling Israeli Honey for Rosh Hashanah. Individual jars and gift sets available from \$6.00 - \$12.00.

All proceeds support Kadima and USY.

See enclosed flyer for details.

Any questions please contact

Gina G. Gerstein (732)329-1198.

U.S.Y.

Welcome back North/South Brunswick USY. We are so excited to start this year off with a bang with all the exciting events we have planned! We are going to open up the year on September 10th with ice cream, along with ice breakers to get everyone acquainted. Please note that this meeting will start at 6:45 PM and we will be breaking for Minyan.

Later in the month we will be meeting at the Stop N Shop on Rte 27 for our "Supermarket Sweep", at 7:30 PM on September 28th. Please RSVP by the 25th and bring \$10. More Information to follow by fliers and e-mail.

Don't forget, it is not too late to get in your membership application. Not sure if you sent it in? E-mail our advisor, Audra Lifson, at USY@bnaitikvah.org, and she will let you know if she has it. Can't wait to see you all at the first event!

Thanks.. Audra

USY Officers for 2006-2007

President - Keren Brown

Israel Awareness VP - Alex Welsher

Religious/Education VP - Josh Greenberg

SATO VP - Jason Marx

Membership/Programming VP - Ben Ehrlich

Communication - Jodi Eisenberg

Congratulations to all our new USY leadership.

Special mazel tov to Ben Ehrlich who will also serve on the Hagalil Regional General Board.

Dorothy Cohen

Co-Chair, B'nai Tikvah Youth Commission

College Students

Do you have a student bound for College this fall? Add their address to B'nai Tikvah's College Committee mailing list. College students will receive three packages through the year connecting them to their Jewish roots at B'nai Tikvah. Donations and volunteers for this effort are also needed.

For more information contact;

Marcia Schwartz (732-297-6365) or Visit;

<http://www.bnaitikvah.org/youth.html#college>

B'NAI TIKVAH COMMUNITY

From JTS to CBT

Jesse Olitzky received a BA degree from the Albert A. List College of Jewish Studies of The Jewish Theological Seminary at its 112th Commencement Exercises held on May 18, 2006 in New York City.

A total of 150 degrees were conferred on the newest group of young leaders trained to serve nationwide as rabbis, academics, cantors, scholars, Jewish educators and Jewish community leaders.

If you have not had the opportunity yet to do so personally, please join us in congratulating the Olitzky family.

Please send photo's, artwork, poetry and articles of interest to the Congregation B'nai Tikvah community to HaKol@bnaitikvah.org.

You May Become a Published Author!

LIKE MOST AMERICANS, YOU PROBABLY SPEND MOST OF YOUR TIME EARNING YOUR MONEY

But, how much time do you actually spend managing it?



At Wachovia Securities, we can help you manage and protect your wealth by:

- Helping you plan your portfolio, research your stocks, prepare an asset allocation plan and implement and track your plan
- Consolidating your brokerage and banking accounts into one asset management account to help with bill paying and expense tracking
- Providing access to your brokerage and banking accounts online

For more information, call:

Bruce M. Weinstein
Senior Vice President – Investment Officer
989 Lenox Drive, Suite 200
Lawrenceville, NJ 08648
888-219-2538 • 609-896-4625



SECURITIES AND INSURANCE PRODUCTS:

NOT INSURED BY FDIC OR ANY FEDERAL GOVERNMENT AGENCY - MAY LOSE VALUE
NOT A DEPOSIT OR GUARANTEED BY A BANK OR ANY BANK AFFILIATE
Wachovia Securities, LLC, member NYSE & SIPC, is a registered broker-dealer and a separate non-bank affiliate of Wachovia Corporation. ©2005 Wachovia Securities, LLC 62540 5/05

ENTERTAINMENT BOOKS!!! START SAVING IMMEDIATELY

**NOW ONLY
\$ 2 5**

**MAKES A
GREAT
GIFT**

discounts on dining, shopping and services
Buy-one-get-one-free and 50%-off
Extra savings at entertainment.com

Frequent Values® program provides ongoing 20%
discounts with select merchants

- Printable coupons for special offers
- Discounts for online e-tailers
- Travel savings on airfare, hotels and car rentals
- New and exciting updates and information

Call Barry Safeer (432-9622) or the synagogue office (297-0696) to order.

Order online at www.Bnaitikvah.org.

Consignment orders accepted. We deliver!

Make all checks payable to Congregation B'nai Tikvah.

1 Free Blockbuster Rental & Popcorn With Every Book Purchased!

Buy an Out-of Town Book For Your Next Vacation.



B'NAI TIKVAH COMMUNITY

MIRACLES

A Poem by Blanche Rosloff

Sally stands on the podium
getting her Masters degree and giving a speech
Tears stream down my face
for this miracle.

How often I had turned to page 686
of our prayer book
to recite over and again
a prayer for the sick.

My daughter is a premenopausal woman
she had her children late
and has become yet another hash mark, another statistic,
a woman with breast cancer at forty-seven.

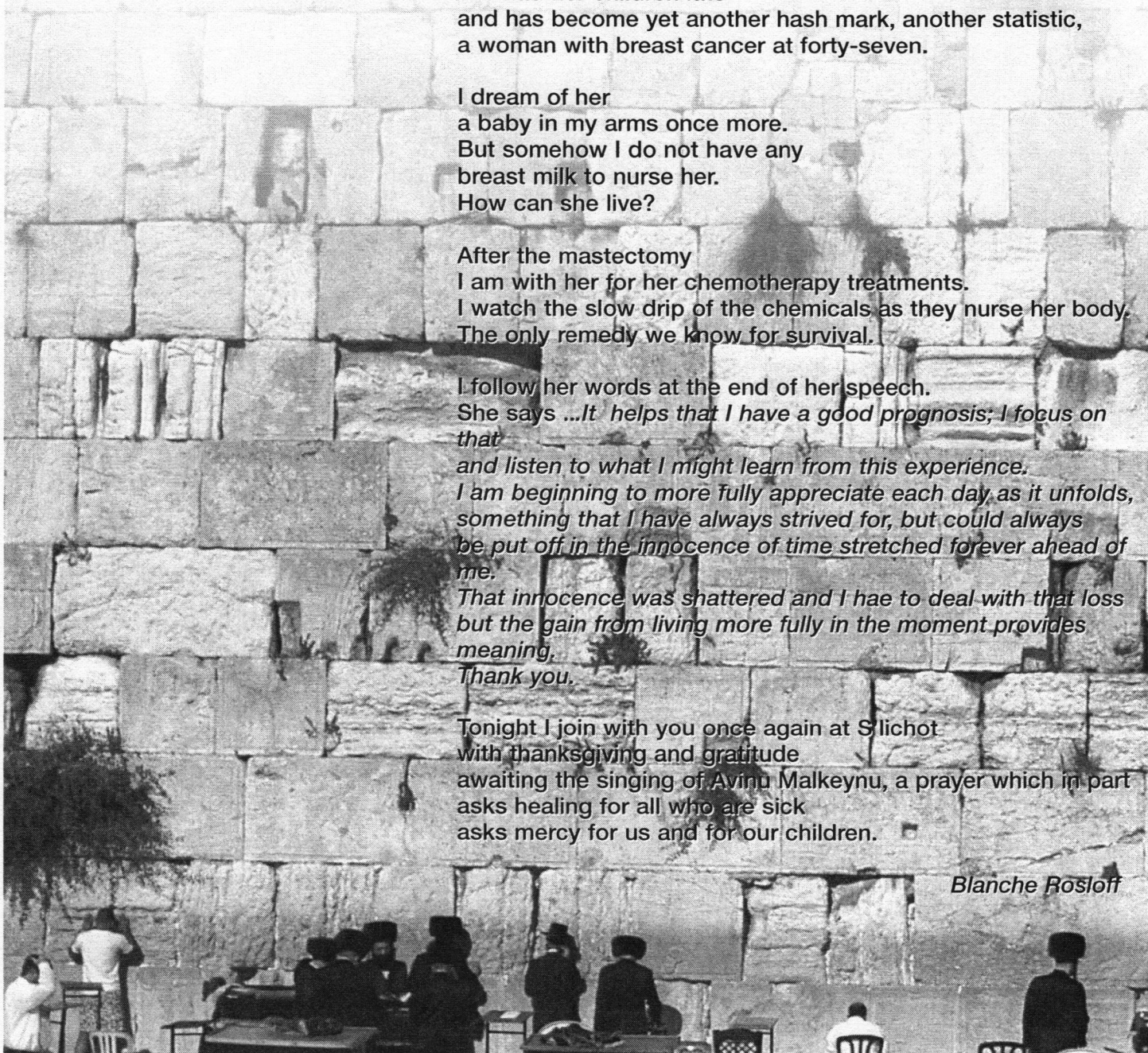
I dream of her
a baby in my arms once more.
But somehow I do not have any
breast milk to nurse her.
How can she live?

After the mastectomy
I am with her for her chemotherapy treatments.
I watch the slow drip of the chemicals as they nurse her body.
The only remedy we know for survival.

I follow her words at the end of her speech.
She says *...it helps that I have a good prognosis; I focus on that
and listen to what I might learn from this experience.
I am beginning to more fully appreciate each day as it unfolds,
something that I have always strived for, but could always
be put off in the innocence of time stretched forever ahead of
me.
That innocence was shattered and I have to deal with that loss
but the gain from living more fully in the moment provides
meaning.
Thank you.*

Tonight I join with you once again at Slichot
with thanksgiving and gratitude
awaiting the singing of Avinu Malkeynu, a prayer which in part
asks healing for all who are sick
asks mercy for us and for our children.

Blanche Rosloff



B'NAI TIKVAH COMMUNITY

ADULT EDUCATION COMMITTEE

The Adult Education Committee is developing an exciting program this year, beginning with the film
"West of Hester Street"
 on Wednesday, October 25.

As an appropriate follow-up to the film, the committee is organizing a trip to the Lower East Side Tenement Museum on Sunday, October 29.

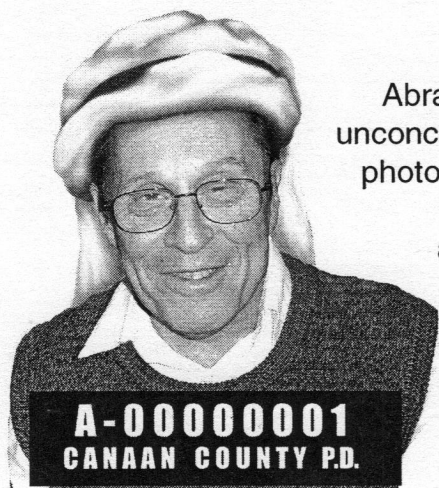
Please see the flyer included in this issue for details and registration form.

Mae Rubinstein & Jerry Shulman

Guilty or Innocent?

**Abraham to be Judged
by a Jury of his Peers**

On September 16th, at 9:00 PM, Abraham will stand trial in the court of Congregation B'nai Tikvah. Charged in the attempted murder of his son Isaac, Abraham and his team of defense lawyers will plead his case for innocence as the prosecution builds their case for guilty



Abraham seems unconcerned in this photo taken at his booking and arraignment.

Is this another case of Judicial anti-semitism? Is Abraham to be railroaded like Dreyfus? Come voice your opinion, deliberate with the jury, help decide this case of the millenia. It's time for justice to be served.

50plus

**Meetings; August 22nd, 1 PM
September 26th, 1 PM**

The Fifty Plus Group will meet on Tuesday, August 22, at 1p.m. in the Social Hall of the Synagogue. The program is on identity theft and sponsored by the N.J. Department of Banking and Insurance. Office of Public Affairs. On Tuesday, September 26, at 1 p.m., we will meet to enjoy a presentation by our member, Gerald Gitlitz, an artist in stained glass. As usual, all are invited to join us for these programs and refreshments.

As we begin our fiscal year, dues are still only \$ 15.00 a year and all Congregation members over the age of 50, as well as their Jewish friends, who are not B'nai Tikvah members, are invited to join. Please consider your support of our group as an important part of our Congregation.

Call Doris at 609-860-1498 or Annette at 732-297-3562 for further information.

Will Abraham need to ask forgiveness?

Trial to be followed by S'lichot services; The Penitential Season Begins

At 11:30 PM on Saturday September 16th we will begin reciting the S'lichot Prayers. The Prayers of Forgiveness are recited in preparation for the High Holidays of Rosh Hashanah and Yom Kippur.

The S'lichot Prayers use the theme of the thirteen attributes of mercy.

To find out about these attributes you can look them up in Exodus 34:6-7 or you can come to services and learn what it all means.

B'NAI TIKVAH COMMUNITY



Dear Fellow Congregant and Friend of Israel:

As an investor (or potential investor) in Israel Bonds, you will be interested to learn of important changes to the Israel Bonds portfolio that became effective March 1. These changes include the addition of new securities and features, including **instruments with maturities of only two years.**

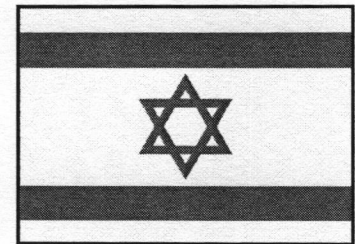
Highlights include:

- **Savings Bonds.** These new bonds are offered with a choice of 2 year or 10 year maturities. The bonds have a minimum \$2,500 purchase price, and carry a fixed rate of interest payable upon maturity.
- **Jubilee Bonds.** Two new bonds have been added to the Jubilee series. Like existing Jubilees, they are available for a minimum \$25,000 investment, and carry a fixed rate of interest. The Jubilee series now has maturity options of 2, 5, 7, or 10 years.
- **Floating Rate LIBOR Bonds.** Israel Bonds continues to sell 10 year LIBOR bonds, available for a minimum \$5,000 purchase -- \$4,000 or \$4,500 for IRAs.
- **Mazal Tov Bonds.** The popular \$100 gift bond remains available
- **Discontinued Instruments.** Israel Bonds no longer sells 7th Development Issue bonds or 8th Zero Coupon Bonds. New and existing securities can provide alternatives to these discontinued instruments.

The versatility of the new Israel Bonds portfolio offers significant choices for numerous investment objectives, including retirement plans, foundation endowments, matching funds programs, and charitable and personal gift-giving. For a prospectus and complete purchase details, you can call our local Israel Bond Office (732-828-0200) or visit www.israelbonds.com.

The new Israel Bonds portfolio will play an important part in helping to build a new Israel. We are confident of your continued support.

Sincerely,
Larry Cohen, Israel Bonds Co-Chair
Larry.Cohen@BnaiTikvah.org



State of Israel Bonds



Investment Rates (Illustrative Only, not an offering)

4 th JUBILEE ISSUE BOND	
(2-YEAR)	4.95%
(5-YEAR)	5.00%
(7-YEAR)	5.15%
(10-YEAR)	5.30%

6 th FLOATING RATE LIBOR BOND	
(10-YEAR)	5.20%

Fixed Annual Interest Rate for Bonds Purchased March 1, 2006 Through March 9, 2006

- Fixed annual interest rate for the life of the bond is determined at the beginning of the Sales Period in which the bond is purchased. Interest is payable by check mailed May 1 and November 1.
- The bonds are being issued in book-entry form. Certificates will be issued only to government Agencies, pension funds, financial institutions and Employee Benefits Plans that so request at the time of purchase.
- The original registered owner of the Bond can assign the Bond by way of collateral security to an Institutional Lender.
 - 5-YEAR: after 3 years from issue date.
 - 7-YEAR: after 4 years from issue date.
 - 10-YEAR: after 5 years from issue date.

MINIMUM SUBSCRIPTION: \$25,000 AND MULTIPLES OF \$5,000

STATE OF ISRAEL SAVINGS BOND	
(2-YEAR)	5.00%
(10-YEAR)	5.40%

Fixed Annual Interest Rate for Bonds Purchased March 1, 2006 Through March 9, 2006

- At maturity, holder receives \$2,756 per \$2,500
- unit on the 2-YEAR bond and \$4,230 per \$2,500
- unit on the 10-YEAR bond.
- Interest not paid until maturity.
- The bonds are being issued in book-entry form. Certificates will be issued only to government Agencies, pension funds, financial institutions and Employee Benefits Plans that so request at the time of purchase.

MINIMUM SUBSCRIPTION: \$2,500

MAZEL TOV BOND (5-YEAR)

- At maturity, holder receives \$126 representing An interest rate of 4.73%. This interest rate is Effective through March 9, 2006.
- Non-transferable except in limited circumstances (e.g., to a charity).

Initial Interest Rate for Bonds Purchased March 1, 2006 Through March 9, 2006.

Initial interest rate is 20 basis points (fixed at time of purchase) above the 6-month applicable LIBOR rate. The applicable LIBOR rate is adjusted thereafter on June 1 and December 1. This adjusted rate is determined 2 business days prior to the first business day of these months. Interest payable on June 1 and December 1 and on maturity and calculated on the basis of a 360 day year consisting of twelve 30 day months.

If your subscription is received and accepted before the 15th of the month, your issue date will be the 15th day of such month; if your subscription is received and accepted on or after the 15th, your issue date will be the first day of the following month.

If your issue date is the 15th day of the month, your bond will Mature ten (10) years from the first day of the month in which your bond was issued. If your issue date is the first day of the month, your bond will mature ten (10) years respectively from the issue date.

The bonds are being issued in book-entry form. Certificates will be issued only to government agencies, pension funds, financial institutions and Employee Benefits Plans that so request at the time of purchase.

You may not assign or transfer the bonds except in certain special instances. The bonds will be repurchased prior to maturity only upon the death of the last surviving registered owner of the bond or the termination of an Employee Benefit Plan that owned the bond.

MINIMUM SUBSCRIPTION: \$5,000 AND MULTIPLES OF \$2,500 IRAs: \$4,000 OR \$4,500

New Office Location - Israel Bonds

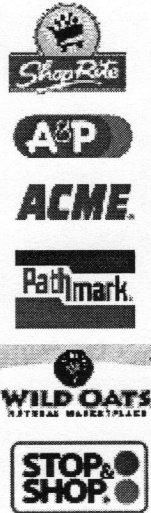
Please note new office location:
(in Federation Office)
230 Old Bridge Turnpike
South River, NJ 08882
Tel: 732-390-2173
Tel: 800-752-5652
<http://bnaitikvah.org/bonds.html>

B'NAI TIKVAH COMMUNITY

Supermarket Scrip Committee

Give Yourself a Big Hand!

That's right. You, the members of Congregation B'nai Tikvah (CBT), earned and deserve a big round of applause. Why? Through your wise purchasing of supermarket scrip during the 2005 - 2006 CBT calendar year, your synagogue's scrip committee bested their personal best with total sales approximated at \$171,000! That is correct. This amount of supermarket scrip went from the stores (i.e. A&P, Acme, Pathmark, Shop Rite, Stop & Shop and Wild Oats) to CBT's safe to your pocketbooks and then back to the source supermarkets.



Loosely translated, \$171,000 equals about \$8,550 for CBT's treasury! (Too many exclamation marks? I think NOT!!) For the 2006 - 2007 year let's continue to support CBT and exceed this total.

For those of you who have purchased scrip in the past - a BIG THANK YOU! Keep up the good work. If you have never bought scrip or it has been a while since your last purchase, here is a refresher course on supermarket scrip. Scrip is a gift card available from the above listed stores. With the scrip card you can redeem the face value for merchandise sold in these stores. I know you need to shop for food and other items sold in these stores, so why not use supermarket scrip? Scrip IS NOT welfare or food stamps. In fact, the existing welfare/food

stamp program (Work First New Jersey) has a card system, but it is a blue card. None of the supermarket scrip cards resemble the state's cards; so your image has not been tarnished.

With your continued support, we can set and reach a new, higher total next year.

This month's tip: To paraphrase a "joke" that has been circulating (for years) on the internet: Jewish holidays in a nutshell celebrate our history, which has been our enemies (too many to list and it depends on what century we're in at the moment) tried to kill us, we won, let's eat! Well, Rosh Hashanah is will be upon us this month (September 22). It's a good holiday where we get together with family and friends to celebrate a new year that would hopefully be filled with sweetness and all good things. So don't forget to buy those apples, honey, pomegranates and round challahs. In order to truly honor this holiday let us also remember those Jewish neighbors of ours who are less fortunate. Extend ourselves to them. This can be done in many ways. One way is just to remember them with visits/phone calls. Another way is to donate money or supermarket scrip to your town's food pantry with instructions that our Jewish friends be the recipients of these cards and/or the food that can be bought with the scrip. It's the right thing to do and it IS a mitzvah!

Happy New Year to all and to all a sweet year!

Linda Feinstein

You Can Purchase Scrip By:

- visiting the scrip committee's table during religious school on Sundays;
- calling CBT during business hours;
- ordering online (www.bnaitikvah.org);
- contacting the scrip committee chairperson (Rachel.Shaneson@bnaitikvah.org).

SPECIALIZING IN WATER HEATERS

INSTALLATION & REPAIRS
NEW CERAMIC TILE
DRAIN CLEANING
SUMP PUMPS

KITCHENS & BATHS
GARBAGE DISPOSALS
APPLIANCE HOOK-UPS

PARK ACRES PLUMBING & HEATING

KENDALL PARK
732 297-7538

Harold Small Lic. #5648

Owner will personally come to your home or business
-Over 40 years experience-

We recommend Bradford White Water Heaters



B'NAI TIKVAH COMMUNITY

SISTERHOOD

Sisterhood would like to acknowledge its new slate of officers for the coming year. New and old officers were proudly recognized this past June during the annual Sisterhood Installation. This year's officers include four women taking on Sisterhood leadership roles for the first time.

Executive Board

President	Phyllis Safeer
Administrative VP	Linda Fellen Gottesman
Membership VP	Ellie Greenberg and Nila Mason
Fundraising VP	Jackie Master
Education VP	Beth Schurman
Correspond. Sec.	Ellyn Schneider
Recording Sec.	Kim Riemann
Financial Secretary	Fern Katronetsky
Treasurer	Gale Dillman
Past President	Lynn Biderman

Trustees

Publicity	Dot Cohen
Gift Shop	Deb Spigner and Laurie Waltzer
Communications	Lori Sookerman and Shelley Wistreich
Good & Welfare	Serena Blackin
Jewish Living	Ann Rosenzweig and Joyce Gerbman
Social Action	Andrea Katz
Torah Fund	Ruth Anne Koenick
Hospitality	Teresa Samtur
School & Youth	Nancy Ascher Schultz
Israeli Affairs	Teresa Samtur
Historian	Joella Sperber Jiorle
Creative Handcrafts	Bobbi Binder

Below is an excerpt from the speech given at Installation by incoming Sisterhood President Phyllis Safeer:

As is true in life, with change comes a renewed energy and refreshed outlook. There are many new and interesting plans for Sisterhood in the coming year and I am proud to be leading Sisterhood into these exciting times. I welcome both new and returning board members and know that we can and will work together to make the coming year an exceptional one in the history of our Sisterhood. I am looking forward to working with all of you on behalf of our unique organization. We are fortunate to have such a dedicated group of women who give of themselves to enrich the lives of the women in our synagogue. We are the women's group within the Temple. We are part of the international group Women's League for Conservative Judaism. We encourage educational and spiritual growth from a women's perspective and we offer the opportunity for individuals to take part in enriching activities. It is remarkable that so many women find the time in their busy lives to make sure our Sisterhood remains strong and positively contributes to synagogue life. We are women of every age and at every stage in life. As a diverse group within our congregation, there is a place and a program for everyone.

It is with tremendous pleasure and enthusiasm that I take this opportunity to contribute to Sisterhood, which is an organization I have been a part of for many years in various capacities. Former Sisterhood Presidents and all board members (many of whom are also dear friends) have set the bar high with their past achievements. It will be my goal to go further and I am inviting all women of this congregation to help. Be a Sisterhood member. Volunteer for a committee or two. Come to meetings. Send us your suggestions for fundraisers, programs and events. Get involved.

Visit Sisterhood on B'nai Tikvah's website:
<http://www.bnaitikvah.org/sisterhood.html>

Dorothy Cohen, Sisterhood Publicity

Have a new baby, birthday, or
Bar/Bat Mitzvah to celebrate?

Why not send a Leagram?
\$3.00 or 2 for \$5.00

Please call Serena Blackin at 732-390-9515

B'NAI TIKVAH COMMUNITY

SISTERHOOD continued . . .

MEETING REMINDERS

Sunday, Sept 17 - 10 am

Sisterhood Season Kickoff
Breakfast & Open House
New, old and prospective members are invited, bagel and lox served. Throughout the year, the Social Action arm of Sisterhood collects particular items of a specific theme. For September, each participant is asked to bring some school supplies.

Wed, Oct. 18 - 7:45 pm

Greeting Card Making and
Jewish life cycle event card making.
An instructor will be brought in to teach this interesting craft.

SISTERHOOD'S JUDAICA SHOP

Fresh, new inventory arriving each month! Our prices are the best around – compare and you'll see. Special orders are easy! See something you like elsewhere – we'll try to get it for you! Shop early for Rosh Hashanah! Honey pots, apple servers, sets for your home or as a gift. Wonderful treats for children! Fantastic cookbooks and children's reading. We carry a large range of ritual items for each holiday – shofrot, candlesticks, mezuzahs, mezuzah scrolls, kippot, tallit, candles and more. Engagement and wedding presents you won't find anywhere else. Baby presents and bar/bat mitzvah gifts. Shop with us for that special tallis, kippah and tallis clips. Unique and new jewelry – hamsahs, chai, mezuzah and Jewish star necklaces for boys and girls, men and women. Evil eye beaded jewelry and the most recent new styles. (We've shopped the world over just for you – well, actually, Philadelphia and New York! Next year, the World!)

Visit us often.

Our hours are: Tuesday 4 – 6 pm, Wednesday 11:30 am to 2 pm, Sunday 9 am to noon. We are more than happy to open for your shopping pleasure by appointment, too! Just give us a call.

Support Sisterhood and the Synagogue by shopping with us – often!


Trustees: Felice Ciccione, Sue Levinson, Deborah Spigner and Laurie Waltzer.

Just call 732-297-0696 to reach us!

You can also e mail: judaica@bnaitikvah.

Any questions, just give me a holler!

Thanks, Deborah



Custom Eyes

Wayne Gonchar
Optician

**Eyewear is a great accessory...
It can change your appearance...
Your personality!
Come visit us!**

**HOURS: Mon., Tues., Wed., Fri: 10-6
Thurs: 10-7:00 Call for Weekend Hours**

647M Rt. 18 • East Brunswick
(A& P Shopping Center & Arthur Street)
732-613-EYES (3937)



KIPCON Inc.
1225 Livingston Avenue
North Brunswick, NJ 08902

Mitchell H. Frumkin, P.E., R.S.
President

telephone: (732) 220-0200
toll free: (800) 828-4118
facsimile: (732) 220-9017
e-mail: info@kipcon.com
mfrumkin@kipcon.com
internet: http://www.kipcon.com

Engineers/Inspectors

B'NAI TIKVAH COMMUNITY

SOCIAL ACTION

Ongoing Social Action Activities

Food of the Month:

Canned goods. The summer months tend to be slow for food pantries, and they are often in desperate need of donations. Please give generously.

Mitzvah Crib:

The Mitzvah crib has had used items, items for older children, and simply inappropriate items in it in recent months. It is for new infant items only, such as diapers, wipes, bottles, toys and clothing. Please consider those less fortunate on your next supermarket trip and pick up a baby item on sale. These items will be distributed to needy families in the area.

If you want to receive e mails about upcoming mitzvah making opportunities for adults and children, please write to social.action@bnaitikvah.org.

We welcome suggestions! Please send your suggestions to the above e-mail address.

Amy Smith purchased back packs and school supplies for needy children in August with Social Action funds. Thank you Amy for once again taking on this important task.

Look for details about Social Action's plans for the year ahead in the October Hakol.

Social Action Committee

Mitzvah Projects

I will be collecting the pull tabs from soda and juice cans. They will be given to the Ronald McDonald House charities.

There will be Ronald McDonald House "Houses" placed around the Synagogue and the Hebrew School.

Thank you for your help in making this project a success.

Melissa Katz

Cell phones with chargers are now being collected by Adam Dickert as his mitzvah project.

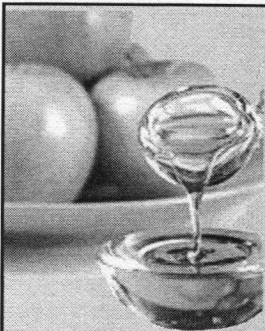
I would like to invite you to participate in my Bat Mitzvah project. I will be knitting scarves for homeless shelters for the 2006/2007 winter season.

The homeless shelters could use other items, as well. If you are interested in knitting, crocheting, sewing, etc. sweaters, hats, gloves, blankets or other items that would be useful for the winter, please contact me, Alissa Platz, at;

Alissa.Platz@bnaitikvah.org or at 732-821-6828.

They can use items for men, women, and children.

Alissa Platz



**Rosh Hashanah 5767,
The New Year Begins
On the Evening of Friday,
September 22nd.**

Please watch your mailbox for the flyer with service times and details.

In the meantime, get your L'Shanah Tova cards out early.

CONTRIBUTIONS May 16th through July 31st

Religious School Graduation

Donations:

A donation was made to USY/Kadima by:

Renee & Steve Levin in honor of Corey Garyn, Michael Katcher, Melissa Katz, Jason Seidman, Ethan Weg and Allison Baer.

A donation was made to our Religious School Education Fund by:

Christine and Phillip Pollock in honor of Michele Sherman and Carol Winter. Rose & Jeffrey Berger in honor of Caren Abschutz, Sara Fernandez and Linda Katz.

Deborah and Martin Spigner in honor of: Brittany Altman, Evan Angstreich, Jaclyn Angstreich, Joshua Ciccione, Courtney Cohen, Sarah Feldman, Corey Garyn, Ben Goldman, Gil Goldman, Mitchell Gorelick, Jason Haberman, Alex Herbst, Joshua Kamen, Michael Katcher, Melissa Katz, Andrew Kudwitt, Aaron Lassin, Paul Mendes, Alexandra Mevorah, Jeffrey Mevorah, Jennifer Movorah, Rebekah Riemann, Talia Rothfus, Tamara Rucko, Brian Schwatz, Jason Seidman, Daniel Shapiro, Rebecca Shapiro, Keith Sperling, Ellie Tunison, Jessica Warner, Ethan Weg, Jake Weinreb, Matthew Weinstein, Allison Baer, Matthew Rucko, Alexander Welsher.

Yartzeit:

Joyce and Joel Gerbman, in memory of Annette Weinstein
 Claire Hirshman, in memory of her beloved mother, Beatrice Silverman
 Debra and Ronald Sperling, in memory of Ruth Sperling
 Sherry Valan, in loving memory of her daughter, Donna Valan-Wright
 Leslie, Steve, Craig and Adam Dickert, in memory of Rose Klein
 Michele and Dave Greenfield, in memory of Mary and Hyman Arougheti
 Susan and Harry Rosenzweig, in memory of Ruth Zimmerman
 Sylvia Shore-Katz and Terry Katz, in memory of Adele and Morton Shore
 Jodi and David Marcou, in memory of Richard Wexler
 Adrienne and Herbert Mars, in memory of Benjamin Mars, father of Herbert Mars
 Helen Segal, in memory of George Segal
 C. Lazar
 Ruth and Rubin Rakowitz, in memory of Eli Samwick
 Adrienne Rogove, in memory of

Jacob J. Cohen
 Ann Gold, in memory of her mother, Rose Merker
 Charlene and Howard Nass, in memory of Sylvia Nass
 Gladys and Sidney Kalman, in memory of Joseph Kalman
 Claire Hirshman, in memory of Rose Hirshman
 Vicki and Burt Bauman, in memory of Benjamin Bauman
 Norlyn and Dennis Kessler, in memory of Bessie Goldman
 Rachel and Michael Silverstein, in loving memory of their son, David Silverstein
 Phyllis and Howard Rich and Family, in memory of Allen Rich
 Roberta and Harvey Bilker, in memory of Rose Bilker
 Meyer Barrack
 Susan and Joseph Saloman, in memory of Esther Saloman
 Claire Hirshman, in memory of Isidore Hirshman
 Norlyn and Dennis Kessler, in memory of Dorothy Hankins
 Arlene and Leonard Maltz, in memory of Eva Greenberg
 Sheila and Robert Hordon, in memory of Louis Feldman
 Fern and Allan Katronetsky, in memory of Constance Cohen
 Rees Klemish, in loving memory of her father, Peter May
 Arline and Bernard Binder, in memory of Morris Sotkin
 Susan and Harry Rosenzweig, in memory of Robert Zieselman
 Phyllis and Leon Horilck, in memory of Rose Rosenbaum
 Stanley Levine, in memory of Suzanne Levine
 Lori Pettit, in memory of Shirley Zall
 Lori Pettit, in memory of Jack Skriloff
 Syndi and Douglas Smoller, in memory of Sheldon Reich
 Gladys and Sidney Kalman, in memory of Mary Kalman
 Nila and David Mason, in memory of Archie Shapiro
 Joann Peisecki, in memory of Shayna Kurzeja
 Joann Peisecki, in memory of Joseph Peisecki
 Stacey and Rochard Watmen, in loving memory of Gloria Watman
 Susan and Harry Rosenzweig, in memory of Jack Zieselman
 Adele and Morton Leader, in memory of

of Adele's father, Joseph Fox
 Diane and Larry Goldstein, in memory of Karl Halpern
Rabbi's Discretionary Fund:
 Bette and Steve Koffler, in memory of Manny Koffler
 Eileen and Marty Zweig, in appreciation of the Rabbi's help during the last few months
 Lori Master, in memory of her beloved parents, Alan and Barbara Master
 Debra and Ronald Sperling, in honor of the Bar Mitzvah of their son Keith
 Richard and Melanie Margolis, in memory of Gertrude Margolis
Cantor's Discretionary Fund:
 Joyce and Arthur Warner
 Norlyn and Dennis Kessler, in honor of the Bar Mitzvah of David Kessler
 Debra and Ronald Sperling, in honor of the Bar Mitzvah of their son Keith
 Eileen and Martin Zweig, in memory of Miriam Zweig
 Richard and Melanie Margolis, in memory of Gertrude Margolis
 Arlene, Marc, Jacob and Aaron Lassin, in honor of Cantor Rockman for his helping Aaron study Torah and for guiding the family through the Bar Mitzvah process
 Cindy and David Mevorach, in honor of the Cantor Rockman, for his help preparing their children, Jeff, Jen and Alex, for their Bar and Bat Mitzvahs
Expansion Fund:
 The Spigner Family, in memory of Marian Diamond (mother of Arlene Frumkin)
 Adrienne and Herbert Mars, in honor of their wedding anniversary
 Adrienne and Herbert Mars, in memory of Frances, Esther and Abraham Mars
 Aaron Rosloff, in memory of Rose Rudnick (mother of Fran Shapiro)
Youth Fund:
Israeli Youth Exchange Fund:
 Arline and Alan Kane, in honor of the birth of Caroline Vernon, granddaughter of Helene and Gary Tinkel
Suse Rosenstock Memorial Fund:
 The Spigner Family, in honor of Lynn Biderman's good health
 Mort and Althea Wurmbrand, in honor of the High School Graduation of their grandchildren Allison Wurmbrand and Matthew Wurmbrand

CONTRIBUTIONS

Michelle and Dave Greenfield, in memory of Sylvia Haller (mother of Marty Haller)

Leon Bible Fund:

Building Fund:

Passport to Israel Fund:

Ilene and Allen Karp, in honor of their son, Joshua David Karp, receiving his MBA from Marshall Graduate School of Business at the University of Southern California

Deborah and Martin Spigner, in honor of Renee Levin and Arie Behar chaperoning a wonderful and safe trip to Israel for their children Amy, Bobbi and Marc Binder, in honor of Renee Levin and Arie Behar chaperoning this year's trip to Israel Nancy and Elliott Danto, in honor of Jesse Olitzky's graduation from the Jewish Theological Seminary of America

Prayer Book Fund:

Sam Gazawie, in memory of Harold Halpern, father of Gary Halpern Batya Mendes Susan and Harry Rosenzweig, in memory of the mother of Errol Schnurman

Makhela Fund:

Allen, Ilene, Joshua and Stacie Karp, in memory of Leon Karp, beloved father of Allen Karp

Sons of Tikvah Fund:

Barbara and Joe Plotnick, in memory of Jeanette Keidan
Barbara and Joe Plotnick, in memory of Charles Moed
Barbara and Joe Plotnick, in honor of

the birth of Caroline Vernon, granddaughter of Helene and Gary Tinkel

School Fund:

Nancy and Paul Zankel, in honor of Carol Winter thanking her for all she has taught Sam this year
Janice and Arthur Baer, in honor of Noah Levin's High School Graduation
Arlene and Marc Lassin, in honor of Larry Cohen, in appreciation of his officiating as Cantor at Aaron's Bar Mitzvah

Nursery School Fund:

Shari and Greg Berman and Family, in honor of Rabbi David Eligberg
Maria and Joseph Lesko, in honor of Michael Denenberg's graduation from Moshe Aaron Yeshiva High School
Carol and Mark Winter, in honor of Michael Denenberg's graduation from Moshe Aaron Yeshiva High School

Religious Activities Fund:

Marty and Chelli Haller, in honor of Bobbi Binder, thanking her for her unending devotion to Judaism and for her support of the Solomon family during a difficult time
Barney Cohn, in memory of Anna Cohn

Library Fund:

Torah Restoration Fund:

Tzedakah Fund:

Social Action Fund:

Nancy and Paul Zankel, in honor of Allison Baer's graduation from Chai School
The Spigner Family, in honor of Matthew Katz becoming an Eagle

Scout


Lorraine and David Gallagher, in memory of Yetta Nash
Janice, Art, Josh and Allison Baer, in honor of Rabbi ELigberg

Men's Club

General Fund:

Marjorie and Joseph Spindel, in memory of Rose Rudnick (mother of Fran Shapiro)
Mary Ann and Jack Pilato, in memory of Sylvia Haller (mother of Marty Haller)
Phyllis Katcher, in memory of Sylvia Haller
Lieselotte and Irwin Weiner, in honor of Aaron Rosloff's 85th birthday

*"Providing Relief,
Restoring Function"*



**jersey
PHYSICAL
THERAPY**
★ ★ ★ ★
Of South Brunswick

3228 Route 27
Kendall Park, NJ 08824
Phone: 732-297-0032
Fax: 732-297-0558
Email: info@jerseypt.com

Contributions:

If you are interested in making a contribution to B'nai Tikvah, please fill out the form below and mail it to us at:
Congregation B'nai Tikvah, 1001 Finnegans Lane, North Brunswick, NJ 08902

In honor of: _____

In memory of: _____

On the occasion of: _____

This donation is being made by:

Name: _____

Address: _____

Telephone: _____

Please send an acknowledgment to:

Name: _____

Address: _____

City, State, Zip: _____

Amount of your Donation:

\$18 \$36 \$54 \$72 \$ 118 Other \$ _____

Please Allocate Donation to:

- Building / Capital Improvements Fund
 - Expansion Fund
 - Prayer Book Fund
 - Cantor's Special Fund
 - Passport to Israel Fund
 - Religious School Fund
 - Torah Restoration Fund
 - Rabbi Discretionary
 - Social Action Fund
 - Religious Activities Fund
 - Yartzeit
 - General Fund
 - Library Fund
 - Makelah Fund
 - Youth Fund
 - Nursery School Fund
 - Tzedakah Fund
 - Son's of Tikvah Fund
- Other: _____

B'NAI TIKVAH DIRECTORY

TITLE	NAME	PHONE #	E-MAIL ADDRESS
Rabbi		732-940-1973	Rabbi@bnaitikvah.org
Cantor	Bruce Rockman	732-422-0963	Cantor@bnaitikvah.org
President	Daniel Greenberg	732-297-3780	President@bnaitikvah.org
VP Activities	Cindy Gittleman	732-274-2253	Activities@bnaitikvah.org
VP Administration	Gary Bergman	732-246-7285	Administration@bnaitikvah.org
VP Membership	Ruth Anne Koenick	732-828-8141	Membership@bnaitikvah.org
VP School and Youth	Jeff Cadoff	732-398-3769	Jeff.Cadoff@bnaitikvah.org
VP Ways & Means	Al Garten	732-297-4595	Al.Garten@bnaitikvah.org
Recording Secretary	Bobbi Binder	732-274-2797	Secretary@bnaitikvah.org
Financial Secretary	Mark Kasdin	732-274-2897	Mark.Kasdin@bnaitikvah.org
Treasurer	Marc Dillman	732-821-7392	Treasurer@bnaitikvah.org
Asst. Treasurer	Mark Jiorle	732-951-9150	Mark.Jiorle@bnaitikvah.org
Past President	Arie Behar	732-422-1495	PastPresident@bnaitikvah.org
TRUSTEES	Art Biderman	732-297-6691	Art.Biderman@bnaitikvah.org
	Larry Cohen	732-821-4376	Larry.Cohen@bnaitikvah.org
	Marlene Heller	732-940-9437	Marlene.Heller@bnaitikvah.org
	Linda Kohn	732-822-2488	Linda.Kohn@bnaitikvah.org
	Allison Nagelberg	732 846-1464	Allison.Nagelberg@bnaitikvah.org
	Beth Schurman	732-803-6299	Beth.Schurman@bnaitikvah.org
	Mark Sherman	732-940-1110	Mark.Sherman@bnaitikvah.org
	Dave Spivak	732-329-2145	Dave.Spivak@bnaitikvah.org
	Gary Warner	732-422-9292	Gary.Warner@bnaitikvah.org
	Paul Zankel	732-254-6465	Paul.Zankel@bnaitikvah.org
VOTING	Fifty Plus	732-297-2233	FiftyPlus@bnaitikvah.org
	Men's Club	732-821-6201	MensClub@bnaitikvah.org
	Sisterhood	732-651-7953	Sisterhood@bnaitikvah.org
Administrative Director	Nitsat Hadas Elami	732-297-0696	Admin@bnaitikvah.org
Administrative Assistant	Roz Fischman	732-297-0696	Office@bnaitikvah.org
Adult Education	Mae Rubinstein	732-398-0099	AdultEd@bnaitikvah.org
Synagogue FAX		732-297-2673	
B' nai Mitzvah Mentors	Cindy Gittleman	732-274-2253	Mentors@bnaitikvah.org
Bikur Cholim	Gale Dillman	732-821-7392	BikurCholim@bnaitikvah.org
Cemetery	Bette Koffler	732-329-6518	Cemetery@bnaitikvah.org
College Committee	Marcia Schwartz	732-297-6365	College@bnaitikvah.org
Couples Club	Nadine Weg	732-329-1359	CouplesClub@bnaitikvah.org
Feedback Committee	Gary Tinkel	732-545-1135	Feedback@bnaitikvah.org
Fifty Plus Group	Doris Sandrowitz	609-860-1498	FiftyPlus@bnaitikvah.org
Hakol Editor	Phil Welsher	908-874-0959	Hakol@bnaitikvah.org
Hakol Advertising	Beth Schurman	732-846-8692	HakolAds@bnaitikvah.org
Israel Bonds	Larry Cohen	732-821-4376	Bonds@bnaitikvah.org
Israel Taskforce	Alan Kane	732-418-1913	Alan.Kane@bnaitikvah.org
Judaica/Gift Shop	Deborah Spigner	732-545-8457	Judaica@bnaitikvah.org
Junior Congregation	Barry Safeer	732-432-9622	JC@bnaitikvah.org
Kadima	Rachel Sakofs	732-297-0696	Kadima@bnaitikvah.org
Leagrams	Serena Blackin	732-390-9515	Leagrams@bnaitikvah.org
Makelah	Marty Angstreich	732-422-8781	Makelah@bnaitikvah.org
Men's Club	Ed Birch	732-821-6201	MensClub@bnaitikvah.org
New Beginnings	Jeanette Bergelson	732-246-1393	NewBeginnings@bnaitikvah.org
Nursery School Director	Phyllis Denenberg	732-297-0295	Nursery@bnaitikvah.org
Parent Advisory	Tammy Zimmerman	732-297-6950	PAC@bnaitikvah.org
Passport to Israel Program	Keith Zimmerman	732-398-1420	Passport@bnaitikvah.org
Programming Activities	Lisa Mason	732-297-0696	Programming@bnaitikvah.org
Publicity	Bette Koffler	732-329-6518	Publicity@bnaitikvah.org
Religious School Principal	Ann Kanarek	732-297-0295	School@bnaitikvah.org
Religious Activities	Marc & Bobbi Binder	732-274-2797	Ritual@bnaitikvah.org
Scrip Committee Chair	Rachel Shaneson	732-329-2189	Scrip@bnaitikvah.org
Sisterhood President	Phyllis Safeer	732-432-9622	Sisterhood@bnaitikvah.org
Social Action Committee		732- 297-0696	SocialAction@bnaitikvah.org
Softball League	Mark Kirsch	732-821-1867	Softball@bnaitikvah.org
USY	Audra Lifson	732-545-4305	USY@bnaitikvah.org
Webmaster	Gary Bergman	732-246-7285	Webmaster@bnaitikvah.org
Yahrzeit Plaques	Nitsat Hadas Elami	732-297-0696	Admin@bnaitikvah.org
Youth Committee	Mike Brown	732-297-0594	YouthActivities@bnaitikvah.org
	Dorothy Cohen	732-821-4376	YouthActivities@bnaitikvah.org

Keep our directory up to date. Updates and changes: e-mail Hakol@bnaitikvah.org, or call the editors at 732-398-1983

8 Elul 5766

September 2006

8 Tishrei 5767

Sun	Mon	Tue	Wed	Thu	Fri	Sat	
<p>AUGUST</p> <p>S M T W T F S</p> <p>1 2 3 4 5</p> <p>6 7 8 9 10 11 12</p> <p>13 14 15 16 17 18 19</p> <p>20 21 22 23 24 25 26</p> <p>27 28 29 30 31</p>		<p>OCTOBER</p> <p>S M T W T F S</p> <p>1 2 3 4 5 6 7</p> <p>8 9 10 11 12 13 14</p> <p>15 16 17 18 19 20 21</p> <p>22 23 24 25 26 27 28</p> <p>29 30 31</p>			<p>Candle Lighting</p> <p>1st 7:13</p> <p>8th 7:02</p> <p>15th 6:50</p> <p>22nd 6:38</p> <p>29th 6:27</p>	<p>1 8 Elul</p>	<p>2 9 Elul</p>
<p>3 10 Elul</p>	<p>4 11 Elul</p> <p>Office & Schools Closed LABOR DAY</p>	<p>5 12 Elul</p> <p>Men's Basketball</p> <p>Nursery School Parent Orientation Board of Directors</p>	<p>6 13 Elul</p> <p>First Day of Nursery Pre-K & 3s</p> <p>Kadima Meeting</p>	<p>7 14 Elul</p> <p>Sisterhood Board & New members Tea</p> <p>USY Meeting</p>	<p>8 15 Elul</p>	<p>9 16 Elul</p> <p>First Junior Congregation Service</p>	
<p>10 17 Elul</p> <p>First Day of Religious School</p> <p>Men's Club</p>	<p>11 18 Elul</p> <p>First Day of Mom & Tots</p>	<p>12 19 Elul</p> <p>Men's Basketball</p> <p>50+ Board Meeting New Beginnings</p>	<p>13 20 Elul</p> <p>First Day of Mom & Tykes</p> <p>High Holidays & Shabbat Training</p>	<p>14 21 Elul</p>	<p>15 22 Elul</p> <p>Shabbat Training</p>	<p>16 23 Elul</p> <p>Selichot Program</p>	
<p>17 24 Elul</p> <p>First Day of Chai School</p> <p>Sisterhood Meeting Special Event</p>	<p>18 25 Elul</p> <p>School Board</p> <p>Kadima/USY Meeting</p>	<p>19 26 Elul</p> <p>Men's Basketball</p> <p>50+ General Meeting</p>	<p>20 27 Elul</p> <p>PAC Meeting</p>	<p>21 28 Elul</p>	<p>22 29 Elul</p> <p>No Nursery School</p> <p>Erev Rosh HaShanah</p>	<p>23 1 Tishrei</p> <p>Rosh HaShanah</p>	
<p>24 2 Tishrei</p> <p>Rosh HaShanah</p>	<p>25 3 Tishrei</p> <p>RAC Meeting</p> <p>FAST OF GEDALIAH</p>	<p>26 4 Tishrei</p> <p>Men's Basketball</p>	<p>27 5 Tishrei</p>	<p>28 6 Tishrei</p> <p>Executive Committee</p>	<p>29 7 Tishrei</p>	<p>30 8 Tishrei</p> <p>Shabbat Shuvah</p>	

COME GROW WITH US...
Add your name to our
TREE OF LIFE

Located in the
 Synagogue's main lobby.



Contact Tammy Zimmerman
 Tammy.zimmerman@bnaitikvah.org
 732-398-1420

TIME for your FIRST TALLIS?
Fabulous Selection for Women & Men

Discount Prices

Call Amy Zelka in East Brunswick at:

732-613-8018

www.ekippah.com

YARMULKAS by AMY L.L.C.

**Plus, Ladies Head Coverings, Judaica Gifts
 Bar/Bat Mitzvah & Wedding Registry**

NEAL R. GITTLEMAN, D.D.S.

& ASSOCIATES

COSMETIC & RESTORATIVE DENTISTRY

Neal R. Gittleman, D.D.S., F.A.G.D. • DawnMarie Di Grazia, D.M.D.
 279 East Main Street • Somerville, NJ 08876

908.722.2999