



**OUR MISSION:**  
TO FOSTER A VIBRANT  
EGALITARIAN JEWISH  
COMMUNITY FOUNDED IN THE  
RELIGIOUS CUSTOMS AND  
TRADITIONS OF CONSERVATIVE  
JUDAISM; OFFERING EXCELLENT  
JEWISH EDUCATION AND  
COMMUNITY ACTIVITIES FOR ALL  
AGES WITH COMMITMENT TO  
ISRAEL AND JEWISH  
COMMUNITIES THROUGHOUT THE  
WORLD.

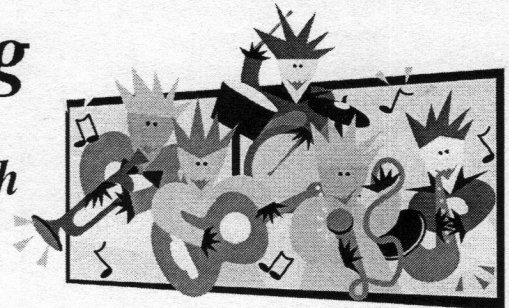
# HAKOL

## Inside this issue:

Rabbi Eligberg	2
Adult Education	3
January B'nai Mitzvah	3
Hazzan's Voice	4
President's Message	5
Membership Minute	6
Schedule of Daily Services	7
Israel Taskforce	7
Congregation Events / Info	8
Religious School	12
Nursery School	13
B'nai Tikvah Youth	14
BT Community	16
Contributions	21
Synagogue Directory	23
Calendar	24

## The Sons of Tikvah Band Presents the Fifth Annual Shabbat Shira Free Concert & Sing-Along

Saturday February 11th  
At 8:00 PM  
Details page 4



### Tu B'Shvat Seder

Sunday, February 12, 2006 at 4:30pm.  
RSVP via the flyer in this HaKol

### Bible People

Adult Ed Series

Wednesdays  
After Minyan  
Details Page 3

### WORLD WIDE WRAP

Feb 5th  
Sponsored by the  
Men's Club

### Coed Adult Beach Volleyball!

Saturday  
February 18th  
7:30pm

Details Page 18

## RABBI ELIGBERG SPEAKS

### “Smoke on the water... Fire in the sky!”

-Deep Purple

OK. The quote does sound a little like Chicken Little's overwrought concerns. But there is something burning in America every day. Americans burn 8 million barrels of oil every day for cars, SUVs, and trucks. The United States has the highest per capita use of energy in the world. With less than 5 percent of the world's population the United States is responsible for almost 25 percent of global carbon emissions. The average fuel economy of American vehicles is now at its lowest level since 1980, while fuel consumption was at its highest!

A world-wide scientific consensus recognizes that fossil fuel emissions are significant contributors to global warming resulting in a degradation of the environment and the viability of many ecosystems, as well as an exacerbation of health problems for millions of people. Every gallon of gas burned releases twenty pounds of carbon dioxide into the atmosphere!

From the moment Adam and Eve were placed in the Garden of Eden humankind has had a sacred obligation to preserve and protect God's creation. As stewards of the Holy One we have been entrusted with meeting the needs of those who dwell on Earth without compromising the ability of future generations to do the same.

The Coalition on the Environment and Jewish Life has developed a series of principles, consistent with the values of our tradition, and viable as the basis for policies addressing climate change.

#### **Responsibilities to Future Generations**

Humankind has a solemn obligation to improve the world for future generations. Minimizing climate change requires us to learn how to live within the ecological limits of the Earth so that we will not compromise the ecological or economic security of those who come after us.

#### **Integrity of Creation**

Humankind has an obligation to protect the integrity of ecological systems so that their diverse constituent species, including humans, can thrive.

#### **Equitable Distribution of Responsibility**

Nations' responsibility for reducing greenhouse gas emissions should correlate to their contribution to the problem. The United States has built an economy highly dependent upon fossil fuel use that has affected the entire globe and must therefore reduce greenhouse gas emissions in a manner which accounts for its share of the problem.

#### **Protection of the Vulnerable**

The requirements and implementations of procedures to address climate change must protect those most vulnerable to climate change: poor people, those living in coastal areas, and those who rely on subsistence agriculture.

#### **Energy Independence**

In recent years, the US has become increasingly dependent on foreign oil supplies, with important implications for US foreign policy, economic dislocation, and trade deficits. Aggressive measures to wean the US economy from its reliance on

fossil fuels will contribute substantially to a secure energy policy.

In Pirke Avot/ Ethics of the Fathers we read the famous teaching of Rabbi Tarfon, “It is not your duty to finish the work, but neither are you free to desist from it.” Addressing environmental problems requires a long term effort on a global scale to be successful. That does not exempt us from doing what is within our grasp and be a force for positive change.

We can support COEJL in its advocacy efforts which encourage: the negotiation and ratification of binding international agreements to minimize climate change and commit industrialized and developing nations to reduce current and projected emissions; to increase Corporate Average Fuel Economy Standards (CAFE) for all vehicles and eliminate loopholes for SUVs; to appropriate foreign aid to developing nations to control carbon emissions; to appropriate funds and create incentives to effect the rapid adoption of clean and renewable energy sources and technologies; and to create programs to help those in the US whose economic security would be jeopardized by changes in energy policy, such as assistance to the poor to meet increased expenses and transition assistance and retraining for coal miners and other affected workers.

We can encourage our Senators and Representatives to support legislation such as The Climate Stewardship Act (S 342) or (HR 759) and The United States - Israel Energy Cooperation Act (HR 5342) which would establish a grant program to fund joint ventures between American and Israeli businesses, academic institutions and non-profit agencies with the goal of promoting the development of clean alternative fuels and more energy efficient technologies.

We can participate in The New Jersey Clean Power Choice Program allowing us to purchase renewable energy from the green Mountain Energy Company and offset the environmental impact of our current energy usage.

We can purchase with prudence, choosing cars that maximize fuel efficiency and appliances that carry high ratings for their energy usage.

Over a century ago Jews began the arduous process of transforming swamps and deserts into a lush and verdant land, a hint of the Garden of Eden itself. For decades, Jews around the world put coins in little blue boxes before Shabbat and planted trees in Israel in celebration of Tu B'Shevat. Tu B'Shevat connected us to the land of Israel and to our responsibility to the world in which we live. Tu B'Shevat now challenges us to be God's stewards and defenders of Creation. As the midrash in Kohelet Rabbah warns: “Take care of My world for after you there is no one to repair it.”

*With blessings,  
Rabbi David M. Eligberg*



# ADULT EDUCATION

## BIBLE PEOPLE

Presented by Visiting Rabbis

Date	Rabbi	Visiting From	Subject
February 1	Bennet Miller	Anshe Emeth	TBA
February 8	David Eligberg	B'nai Tikvah	Elijah
February 15	Stephanie Dickstein	Jewish Health, Healing, and Recovery Network	Leah
February 22	Robert Alpert	East Bruns. Jewish Center	Esther

Did You Miss Paper Clips...  
Would you like to see it again?

### PAPER CLIPS

[www.paperclipsmovie.com](http://www.paperclipsmovie.com)

**Thursday February 23rd - 7:45 PM**

Age appropriate 13 +

RSVP - a must to Elliott Danto

732-297-6175 iamell@comcast.net

Upcoming movies: *Whale Rider*, *The Frisco Kid*, *The Chosen*, *Pleasantville*. Suggestions for other movies please contact the Activities Committee or Elliot.

### SAVE THE DATES:

**WEDS. MARCH 22ND AND 29TH**

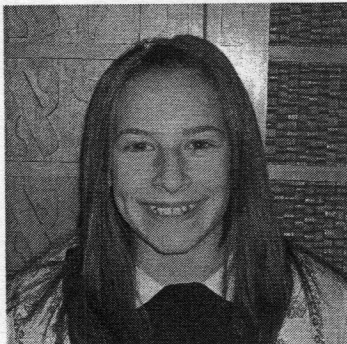
The Two-Part Series  
**"THE CURIOUS HISTORY  
OF THE BIBLICAL PASSOVER"**

Presented by Azzan Yadin

Also, we are trying to reschedule the program on  
**Technology & Our Kids**,  
for later this spring. Keep a look out for the date.

*Cindy Gittleman,*  
VP Activities

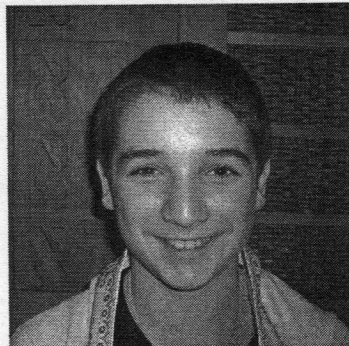
## FEBRUARY B'NAI MITZVAH



**Samantha Berk**

**Feb 4**

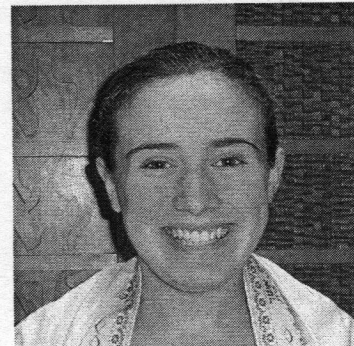
Bob & Sherry Berk



**Ethan Weg**

**Feb. 18**

Allen & Nadine Weg



**Kira Greenberg**

**Feb. 25**

Dan & Carol Greenberg



## OUR HAZZAN'S VOICE Cantor Bruce Rockman

### Shabbat Shirah, Saturday February 11.

### And I Want *You* to be Here To Experience the Joy and Exhilaration

"Then Moses and the Israelites sang this song to the Lord. They said I will sing to the Lord, for he has triumphed gloriously." Exodus 15:1

Thus begins "The Song of the Sea" which celebrates the acts of God at the Sea of Reeds. Moses plays no active role; it is "the blast of God's Nostrils" and the right hand of the Lord that splits the sea. The song concludes with the affirmation of God's redemption of the Israelites from Egypt which will culminate with the re-establishment of our home in the Land of Israel and. "You will bring them and plant them in Your own mountain, The place You made to dwell in, O Lord, The sanctuary, O Lord, which Your hands established. The Lord will reign for ever and ever!" Exodus 15:17-18

We read this section of the Torah each day during our morning prayers, thus acclaiming God's wondrousness. It is just that simple and exhilarating. Once a year, on the Shabbat that we read this section from the Torah we celebrate God's glorious triumph as Miriam the prophetess did, (who) took timbrel in hand, and (lead) all the women (who) went out after her in dance with timbrels.

At B'nai Tikvah we celebrate this event with a great deal of zeal and ruach, the Hebrew word for spirit. And I want you to be here to experience the joy and exhilaration. We have 2 major events on Shabbat Shirah following the special service in which we sing and dance to the Song of the Sea we will continue the excitement with a "Lunch and Sing" program.

Another special event will be on that Saturday night, February 11 at 8PM. The Sons of Tikvah Band will perform the 5<sup>th</sup> Annual Shabbat Shirah Sing-Along and Concert. We thank our many supporters and look forward to seeing as many of you as possible here in our new all purpose room for this spectacular evening of Jewish music. We really want to pack the room and celebrate with our B'nai Tikvah families and friends. **All are welcome to this FREE CONCERT.**

Our band is B'nai Tikvah. It expresses who we are as Jews, our hopeful-

ness and our pride. The Sons have been received much acclaim in our region, and this reflects upon our congregation. We reach out to the community and proclaim our passion for God, for Jewish music and affirm that B'nai Tikvah is the place to be. The volunteers in the band, who like you, contribute to the congregation in many ways. We pray side by side and like you they serve on committees and make financial contributions to our institution. When the group represents the congregation in

the community, we represent our ideals as Conservative Jews and our traditional progressive home, B'nai Tikvah, which a very special and welcoming place.

**Please join us for our very special concert; we want to share our joy with all of you!**

*Worship Adonai in Gladness...  
with joyous song!  
Cantor Bruce Rockman  
and the Sons of Tikvah Band*

## The Sons of Tikvah Band

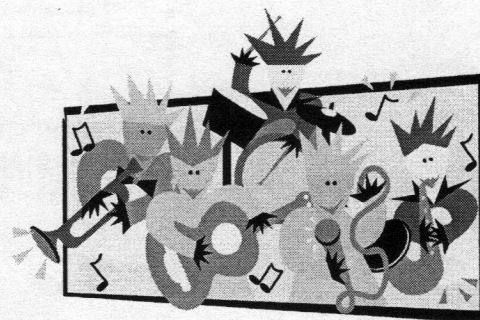
Presents

*The Fifth Annual*

# Shabbat Shirah

## Free Concert

*& Sing-Along*



*Saturday Evening, February 11,*

*At 8:00 PM*

*Please join us for an evening of  
Spirited singing and dancing*

*Sponsored by*

*The Membership Committee of Congregation B'nai Tikvah*



# HAKOL

The Newsletter of  
**Congregation B'nai Tikvah**  
**JCC of North & South Brunswick**  
 1001 Finnegan's Lane  
 North Brunswick, NJ 08902  
 732-297-0696

Published monthly, except for July and August. Submissions are welcomed about Congregation events, group activities, and other material relevant to the local Jewish community.

**All Submissions for the March HAKOL must be in by February 15th**

**We recommend sending submissions and correspondence via e-mail to: [Hakol@bnaitikvah.org](mailto:Hakol@bnaitikvah.org)**

All e-mail submissions are acknowledged via e-mail. You may also put submissions in the HaKol mailbox in the synagogue office. All submissions are subject to available space and editorial constraints. Please call Paul or Nancy Zankel at 732-254-6465 if you have any questions.

**SUBMISSION FORMATS:**

**TEXT:** Editorial submissions should be in plain text format, with no formatting, tabs, columns or fonts. Just type an e-mail, or attach a file in one of the following formats: MSWord, Wordperfect, or MSPublisher. Graphics and photos should be submitted separately, rather than inside other files or documents.

*Advertisements should be submitted as graphic files.*

**IMAGES & GRAPHICS:** Digital images: (Preferred) 300 dpi black & white/ grayscale pdf, jpeg, bmp, or tiff files. Scannable Images: For good scan results, submit 300dpi (minimum) black and white graphics printed on glossy photo paper in hi-res or photo mode.

**ORDER FORMS & FLYERS:** Submit order forms and inserts to be sent with the Hakol mailing to the editors by the 15th of the preceding month.

**ADVERTISING INFO**  
**Tammy Zimmerman:**  
 732-398-1420

## PRESIDENT'S MESSAGE

**Dan Greenberg**

This month, my family and I are thrilled to be celebrating the Bat Mitzvah of our daughter Kira. Like most B'nai Mitzvot at Congregation B'nai Tikvah, she has worked hard and studied long hours to prepare for this day, and Caryl and I are so proud of her.

Seeing Kira as a Bat Mitzvah makes me reminisce about us moving to Kendall Park back in 1993. For several months before we moved, Caryl and I (all right, it was almost all Caryl) packed box after box of books, household goods, and assorted paraphernalia, preparing for our move from North Jersey to the wilds of Middlesex County. The hardest part was that Caryl was pregnant, and she was also taking care of Josh (who was then not quite two years old).

After driving down here from Englewood just about every weekend to check on the progress of construction, we finally closed on the house. Kira was born on Inauguration Day 1993 (I remember watching Bill Clinton getting sworn in from Caryl's hospital room) and six days later, moving day was here.

When we picked this area to buy a home and raise our children, we knew that there was a synagogue a few minutes drive away, but for whatever reason, we never actually attended the services there before moving here. I hate to say it, but it just wasn't a high priority for us.

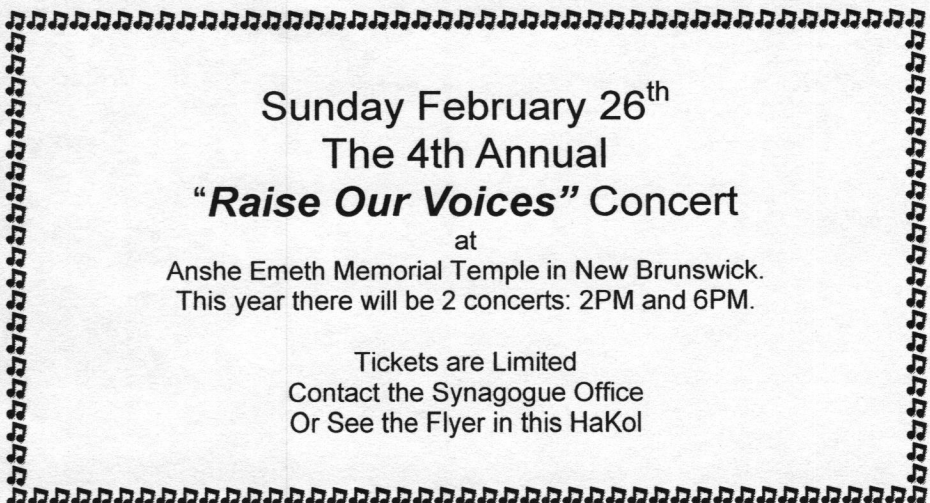
Over subsequent years of course, that changed. We were made to feel welcome here, we started coming to services more often, and we enjoyed the warm, friendly feeling that was (and is) so much a part of this place. And our kids became part of that enjoyment. They went to babysitting on Shabbat, they had fun at the monthly family services, and eventually enjoyed going to Junior Congregation. It didn't take very long for them to establish a comfort level for B'nai Tikvah – for the people, for the services and for the activities that are so much a part of this place.

As they got older, our kids joined Kadimah and USY and are now having fun doing all kinds of activities in our synagogue. It is a very comfortable place for them, as I know it is for so many other kids. For us, it was a complete accident that B'nai Tikvah was the closest synagogue to our home when we purchased it 13 years ago. Luckily for us, it was a good accident!

The years have flown by; Josh is now in high school, Kira is having her Bat Mitzvah, and our baby girl Rachel is quickly growing up. (The scary thought is that by next year, we will have her Bat Mitzvah date already!) And looking back over the past 13 years, I know we couldn't have picked a better synagogue anywhere to become involved in, or to raise our kids in. I am very proud to be a member of B'nai Tikvah – collectively, we are an amazing community that never ceases to amaze me.

I look forward to the next 13 years, and beyond.

*Best,  
 Danny Greenberg*


  
**Sunday February 26<sup>th</sup>**  
**The 4th Annual**  
**"Raise Our Voices" Concert**  
 at  
 Anshe Emeth Memorial Temple in New Brunswick.  
 This year there will be 2 concerts: 2PM and 6PM.  
  
 Tickets are Limited  
 Contact the Synagogue Office  
 Or See the Flyer in this HaKol



## A MEMBERSHIP MINUTE

Ruth Anne Koenick, VP Membership

### Mazel Tov to

Fern and Alan Katronetsky on the Bar Mitzvah of their son Marc

Lisa and Richard Seidman on the Bar Mitzvah of their son Jason

Mitchell Rucko on the Bat Mitzvah of his daughter Tamara

Joel and Jamie Rothfus on the Bat Mitzvah of their daughter Talia

### Our sincere condolences to:

Ron Klein on the loss of his beloved mother Vera Klein.

Mitchell Rucko on the loss of his beloved father Hyman Rucko

Michele Greenfield on the loss of her beloved father Hyman Arougheti

Rfuah Sh'layma and a speedy recovery to all who have been ill in the previous month. We look forward to seeing you soon.

### We warmly welcome:

**Sharon Peisecki.** Sharon majored in Elementary and Special Education at Syracuse University and is currently a first grade teacher at the Judd School in North Brunswick. Before starting her teaching career, Sharon worked for Walt Disney World in the special events area. I've known Sharon for many years, she is a Piscataway High School graduate, but many of you met her for the first time when she presented Brittany Altman with the Illustrated Torah at her bat mitzvah in December.

Sharon has lived in North Brunswick for five years. Both she and her mother Joann, also a new member, joined B'nai Tikvah because they knew people who were already members and because it felt like family.

Join us for the next membership committee meeting at 7:30 on Thursday February 16<sup>th</sup>.

## Development Corporation for Israel STATE OF ISRAEL BONDS

Dear Friends,

There are some changes occurring relating to our local Highland Park office of the State of Israel Bonds. In April, that office will be closed and moved into the Greater Middlesex County Federation Offices in South River.

You can still contact the Israel Bonds Office at (732)-828-0200, and Richard Hirschorn will be available to answer your questions. I encourage you to also use the website, [www.israelbonds.com](http://www.israelbonds.com) for forms and information.

Anita B. Fray, who ran and supported our area, is now the Executive Director for New Jersey and will be working out of Livingston, NJ.

These changes, to maximize efficiencies, were made after a careful review and are consistent with consolidation in other regions of the United States.

Thank you for your support and contact us with any questions.

Larry Cohen,  
Congregation B'nai Tikvah, Co-Chair Israel Bonds  
[Larry.Cohen@BnaiTikvah.org](mailto:Larry.Cohen@BnaiTikvah.org)

## You're A Smart Investor.



## You Look At Your Returns.

You work hard for your money and you want to invest wisely. You're looking for safety, security and a future full of opportunity for your children and grandchildren. The refugee family that landed at Ben Gurion Airport yesterday is looking for the same things. Your investments can help their family as well as yours.



[israelbonds.com](http://israelbonds.com)

### Israel Bonds:

Invest in the Family Business  
Our Land, Our People, Our Bond

For Further Info: Larry Cohen 732-821-4376



## ISRAEL TASKFORCE Alan Kane, Chairperson

### A Chaperone's Story

**Nahal Arugot.** These words meant absolutely nothing to me last February when Arie Behar added them to the itinerary for our congregation's first youth mission to Israel. We had hosted our Israeli guests for the last few years and now it would be their turn to open their homes to us. Both sides were excited at the prospect of making it an actual reciprocal exchange program. Having been to Israel the year before, I had a sense of familiarity with most of the tour sites. But Nahal Arugot remained a mystery. All Arie would divulge was that we would be taking a little hike and that we should bring Teva sandals or water shoes and wear a bathing suit since there was a stream that would keep us cool in the desert heat. It was scheduled for the same day that we were planning to wake up at four o'clock in the morning to start a pre-dawn hike up the snake trail to the top of Masada for a sunrise service. It was also the same day that we had scheduled the kids to experience the Dead Sea. Would it be possible to fit all this into one day: climb the Masada snake trail, swim in the Dead Sea, and hike again in the desert with temperatures soaring to the mid 90s?

Arie assured me that it could all be done and that the kids would love it and we would all sleep well that night. In the back of my mind however, a debate was brewing between the adventurous boy scout of my youth and the reality of an out of shape physique. So the plan was made and later in Israel with the teens, that day finally arrived.

Rousing half a dozen teenagers in the pre-dawn hours was an adventure in itself as we got our gear together only to arrive at Masada a half hour before they would let us begin the ascent. When the guard finally let us start, the teens, lead by Arie, began scampering up the steep trail like a herd of mountain goats. Arie after all, had trained for months for his just completed climb of Mount Kilimanjaro. I knew the day was going to be interesting when I lost sight of them six minutes later. There I was, slogging up the trail all by myself in the dark. I made it to the top of Masada about twenty minutes behind the group just as the sun rose. I quickly forgot all about my aches and pains when I saw the look of awe and inspiration on the kid's faces as they witnessed a glorious multi-hued sunrise over the Dead Sea and desert landscape.

After the kids had their swim, if you could call bobbing like a cork a swim, off we went to our next hike. Nahal Arugot is a one of Israel's many national parks. It is a narrow canyon with steep rocky sides. Running through the center is a fresh-water stream surrounded by lush green vegetation. We started off down the trail when our intrepid leader suddenly changed course and plunged into the middle of the stream, announcing that this was the way he used to hike it. We all had water sandals on except for one of the teens who lost his and had to wear his regular leather hiking boots. Unfortunately for him, they

kept filling with gravel as we walked so he had to stop frequently to empty them out. I would wait for him while the others forged ahead. He didn't know it at the time but I really appreciated those "rest stops". If not for those boots, it would have been a repeat of the day's earlier lonely hike following up the rear. At the end of the stream we came upon a pool with a waterfall pouring into it from a hundred feet up. What a beautiful sight. We found ourselves in the company of Israelis who had hiked the "dry" trail to this hidden oasis. As the group swam and splashed under the crystal clear cascading water, I saw this excursion as a metaphor for the whole trip. There we were: physically, intellectually, spiritually, and socially immersed in the Land of Israel. Hiking back on an uphill trail to the rim, I was so exhilarated that I hardly noticed the strenuous climb. I

**[Arie] "suddenly changed course and plunged into the middle of the stream, announcing that this was the way he used to hike it."**

will always remember this day as one of my best experiences in Israel.

Our next teen mission to Israel will be April 6 – 18, 2006. If your son or daughter would like to participate in the experience of a lifetime, give me a call or send in the form mailed with this Hakol. Alan Kane, 732-418-1913



### SCHEDULE OF DAILY SERVICES

Sunday	9:00 AM Shahareet	7:30 PM	Mincha/Maariv
Monday		7:30 PM	Mincha/Maariv
Tuesday		7:30 PM	Mincha/Maariv
Wednesday		7:30 PM	Mincha/Maariv
Thursday	7:00 AM Shahareet	7:30 PM	Mincha/Maariv
Friday		8:00 PM	Kabbalat Shabbat
Saturday	9:30 AM Shabbat	*:**PM*	Mincha/Maariv

\*As appropriate for the time of year

Babysitting available Shabbat morning 10:00—12:00\*\*



## CONGREGATION EVENTS AND INFO

### TU B'SHVAT SEDER

Tu B'Shvat, the 15th day of the Jewish month of Shevat, is a holiday also known as the New Year for Trees. There are a few customs or observances related to this holiday. One custom is to eat a new fruit on this day, especially fruit that is indigenous to the Land of Israel. Some people plant trees on Tu B'Shvat.

At Bnai Tikvah we hold a **Tu B'Shvat Seder**. Please join us for this fun-filled event and dinner on Sunday, February 12, 2006 at 4:30pm.

To RSVP, see the flyer included with this HaKol



#### B'nai Mitzvah Class Meetings 2007, 2008 and 2009

Parents of children in the above B'nai Mitzvah classes are invited to attend meetings on the following dates:

BM Class of 2007	Thursday, January 12	7:30 p.m.
BM Class of 2008	Thursday, February 9	7:30 p.m.
BM Class of 2009	Thursday, March 16	7:30 p.m.

Important information will be discussed at each meeting so we hope to see you there.



*Hold the date....*

**Sunday, March 19  
12:00 - 3:00**

### Annual Purim Carnival

**Fun, Food, Prizes  
Visit the Shushan Market Cafe  
and Carnival Village**

### Despite the rain and dreary day, Our Annual Chanukah Party Was A Lot of Fun.

The Rabbi's scavenger hunt was a highlight of the afternoon, followed by everyone lighting their Chanukah Menorahs.

The following people sponsored a box of donuts (or more), thank you very much: Rob and Serena Blackin and family, Al and Phyllis Garten and Family, Neal and Cindy Gittleman and Family, Michael Greenfield. Terry and Sylvia Katz, Tom and Hope Peters and Family, Jon and Lori Sookerman and Family, Sherry Valan.

Congratulations to our 50/50 winner, Aaron Rosloff, who graciously donated back his winnings to the Ritual budget.

Congratulations to Sherry Valan, the winner of our Chanukah gift package of Chanukah candles, a Chanukah drip tray and Chanukah spreaders.

A special thank you to everyone who volunteered to shop and to help out throughout the afternoon and for those people who stayed to clean up, your help, as usual, is greatly appreciated. Thanks to Al Garten, Andy Jackenthal, Ruth Anne Koenick, Hope and Tom Peters, Shelly Wistreich, Beth Schurman, Shirley and Marty Engle, Hadas Elami, Mark Roller and Rabbi Eligerg. If I forgot you, please let me know!!!

*Bobbi Binder*

March 31, 2006 will be the one year Anniversary of

### B'nai Tikvah's Ebay Fundraiser

Our goal for the one-year anniversary  
is \$1,000

Bonnie needs your help!!!

Visit the webpage at <http://www.BnaiTikvah.org/ebay.html>

Email [Bonnie.Kudwitt@BnaiTikvah.org](mailto:Bonnie.Kudwitt@BnaiTikvah.org) or  
call her at 732-422-7276

Anything that can fit in a box is worth \$\$\$\$\$\$



## CONGREGATION EVENTS AND INFO

### CEMETARY UPDATE

Congregation B'nai Tikvah maintains cemetery privileges at no cost for members in good standing and their immediate families in the Washington Cemetery, 104 Deans Rhode Hall Road, just off Route 130 northbound. However, certain regulations and requirements must be met in order to take advantage of these privileges.

#### B'nai Tikvah's requirements:

- The deceased must be Jewish by birth or by conversion in accordance with the Halachic standards of the Conservative movement. The Rabbi is the final arbiter of those standards.
- Contiguous graves may be reserved by immediate family members at a cost of \$50 per site.
- Congregants may transfer ownership of a grave to a family member (if the grave is reserved for \$50 or if purchased for \$500), but the grave cannot be sold on the open market.
- Congregants may not transfer their entitlement to a grave as a congregant in good standing to anyone else.

#### Washington Cemetery requirements:

- "No material other than Barre granite shall be used for monuments footstones, bases, etc. except by written approval of the [Washington Cemetery's] Board of Trustees."
- "No single headstone greater than four foot six inches in overall height including base and six feet in width whose base is not wider than seven feet will be permitted on any lot, plot or graves except by written authorization of the Cemetery's Trustees...."
- "A monument taller than 4'6" (fifty-four inches) overall (from ground level) may be erected on the payment of \$500 for each foot (12") or portion thereof for a single monument stone not to exceed 28 inches in width. Said price is posted in the Cemetery office. The over-height fee for a double monument stone shall be twice the over-height fee for a single monument stone. Said fee will be deposited into the Cemetery's Maintenance and Preservation Trust Fund. This fee will not reduce the standard or current foundation charge and Maintenance and Preservation charge."
- "No photographs may be attached to any monument or above ground structure."
- "No monument, effigy, enclosure or structure whatever, or any inscription can be placed in or upon any lot, plot, or grave which shall be detrimental, improper, offensive or injurious to the appearance of the surrounding lots, plots, or graves, or grounds. Such violations shall be determined by The [Cemetery's] Board of Trustees and they shall have the right to enter upon such lot, plot or graves and remove any offensive or improper object, without notice, at the expense of the lot, plot or grave owner, without liability."

Please address all questions to the Cemetery Committee (Cemetery@BnaiTikvah.org) or call Committee Chair Bette Koffler at 732-329-6518.

## From The Webmaster Computer Access

There are three specific locations in the B'nai Tikvah complex where computer access is freely available:

- 1) The Nursery School break-room in the old school wing (former Religious school office),
- 2) the Library and
- 3) Classroom #13 in the new wing.

In addition to being wireless hot zones, these three locations are equipped with computers for public use. We only ask that you turn them off if no one else is using them before you leave. Wireless access is also available in the synagogue office, beit midrash, and the Kiddush room.

*Gary Bergman,  
Webmaster*

## OUR NEW ADDITION NEEDS YOUR CONTACTS!

\* Looking for members that are involved with networking groups, professional groups, business associations, chambers of commerce, etc. that can put information out about our facilities. Contact Lisa Mason, Programming Director @ 732-297-0696 ext. 12 or Programming@bnaitikvah.org for brochures.

\* The new addition has a multi-purpose room with a stage, wireless internet capabilities and can seat up to 350 people.

\* There are 7 classrooms with internet hook-ups, write-on/wipe-off boards or blackboards. Each classroom can seat between 19-24 people. One room opens to accommodate 33 people.

\* We have a kitchen and modern bathroom facilities.

\* The building is available to rent out for courses, sports, parties, mini-conferences and much more. Hours are available during the day and evenings.

*Lisa Mason*



# CONGREGATION EVENTS AND INFO

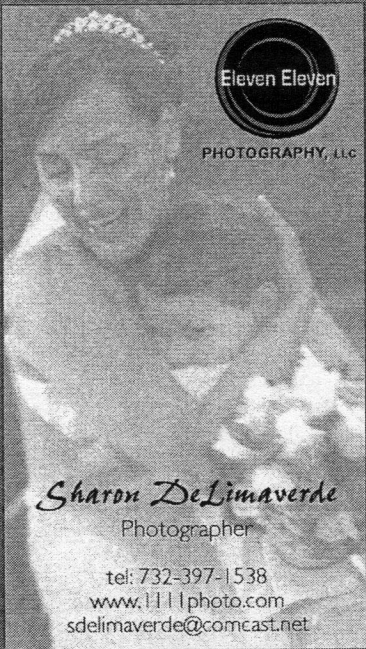
## COME GROW WITH US...

### Add your name to our TREE OF LIFE

Located in the Synagogue's main lobby.

**10% Tu B' Shvat Discount  
for Orders Received Through  
April 1st**

Contact  
**Tammy Zimmerman**  
Tammy.zimmerman@bnaitikvah.org  
732-398-1420

**Eleven Eleven**  
PHOTOGRAPHY, LLC

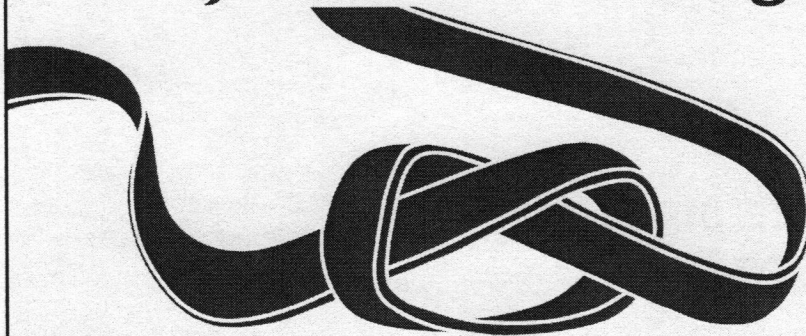
*Sharon DeLimaverde*  
Photographer

tel: 732-397-1538  
www.111photo.com  
sdelimaverde@comcast.net

**Patronize  
Hakol Advertisers!**

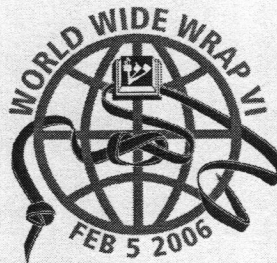
Let them know  
you saw their ad  
in the Hakol.

## Wrap up with God, then, let's have a bagel.



**After the Wrap, join us for a bagel  
and drash on the Mitzvah of Tefillin.**

*Sunday, February 5 at 9:00 am, our Men's Club will  
join thousands of Jews around the world to  
celebrate the Mitzvah of Tefillin. Afterwards, please  
join us for a bagel (and more) and learn more  
about this wonderful mitzvah from the Rabbi and  
others.*



Don't have a set of tefillin? Purchase a set for as little as \$135 plus S&H  
at [www.WorldWideWrap.org](http://www.WorldWideWrap.org)

*"Providing Relief,  
Restoring Function"*



3228 Route 27  
Kendall Park, NJ 08824  
Phone: 732-297-0032  
Fax: 732-297-0558  
Email: [info@jerseyppt.com](mailto:info@jerseyppt.com)



## RELIGIOUS SCHOOL REPORTS

Ann Kanarek, Director

### PARENTS ARE OUR PARTNERS

To accomplish the goals of our religious school in the short time we have with your children each week, we need you to be our partners. Our children are the Jewish community's most precious gift and we ask that you help us to give every student in our school the best possible Jewish experience. Remember that our children look to us as role models. If you show them that Judaism and doing Jewish things are important to you, these things will become important to them.

At the end of this month (on Shabbat, February 25) we read the parasha *Mishpatim*. We read about many mitzvot (53 to be exact!), which encompass everything from murder, to occult practices, to laws of lending, to Shabbat. The Torah portion goes on to tell us how the children of Israel reacted upon hearing many of these commandments. They said, "we will do [first] and [then] we will listen." (24:7)

One would think that we need to *hear* the rules before we can *do* them! Although the wording seems to be odd at first—there are many lessons to be drawn from this. First the children of Israel signified that they were eager to accept and to do Torah - so anxious that they would accept it without knowing its contents.

The phrase tells us that we can learn by doing—and sometimes that we can only understand by doing. Sometimes by over analyzing and debating, Judaism loses something. Some things can only be felt. I have been known to say that *Judaism is caught, not taught*. If we *do* Jewish (rather than just talk about it), our hearts can then *listen*, and we learn from the doing.

For parents there is a lesson. We want our children to learn about Judaism. However, that is not enough. They should also be active Jews. Children will listen a lot better if they see us *do*. As parents, we have to be active Jews. Be our partners in your child's Jewish education. Participate in synagogue activities, and most importantly *do* and live Jewishly at home.

### THE PROMISE HAGGADAH

Although it is still early in the year, we start planning now for the spring holidays. In addition to our very popular **BARTONS CANDY SALE** for Passover, we would like to introduce you to the **PROMISE HAGGADAH**.

The **PROMISE HAGGADAH** is a beautiful, complete and concise Haggadah the entire family will enjoy. You can have your own personalized Haggadah with your family name printed on the front. The **PROMISE HAGGADAH** is designed for children and includes all the essential elements of the Seder.

Each page of the Haggadah is beautifully illustrated. To order this unique Haggadah, kindly use the form included in this issue of Hakol and return it to the School Office by February 15.

Sample Haggadahs are in my Office if you would like to come by and review them. You will love the fact that it will be a keepsake that can be used each year at your Seders.

### RELIGIOUS SCHOOL REMINDERS

**Sunday, February 5:** GIMEL CLASS C.A.F.E. program, *Chamsa workshop* (during regular school hours) with guest artist, *Inbar Bibring* HEI CLASS: WORLD WIDE WRAP with *Rabbi and Cantor*

**Friday, February 10:** Alef Naming Dinner (6:30pm) and ceremony (8:00pm)

**Sunday, Feb. 12:** Rescheduled Jewish Book Month author, *Robin Levinson*, workshop

**Sunday, February 19:** NO RELIGIOUS SCHOOL, *President's Weekend*

**Monday, February 20:** NO RELIGIOUS SCHOOL, *President's Weekend*

**Sunday, February 26:** DALET CLASS PACT Program: *Bridges of Mitzvot County*, 10am-12:05pm

**Sunday, March 5:** ALEF CLASS: C.A.F.E. Program, *Siddur Covers* (during regular school hours) with guest artist, *Inbar Bibring*

**Friday, March 10:** GIMEL CLASS SHABBAT SERVICE (8pm) and DINNER (6:30pm)



Paula Kondioti  
REALTOR-ASSOCIATE®

#### ERA Absolute Realty

1600 Jersey Avenue  
North Brunswick, NJ 08902

Office: (732) 220-6611 x46  
Cell: (908) 208-3976  
Fax: (732) 220-1451  
PaulaKondioti@AbsoluteERA.com  
www.PaulaKondioti.HomesOFNJ.com



Each ERA® Office is Independently Owned and Operated

### NEED A TALLIS?

Fabulous Selection for Women & Men

& Bar/Bat Mitzvahs  
Discount Prices

Call Amy Zelka in East Brunswick at:

732-613-8018

www.ekippah.com

YARMULKAS by AMY L.L.C.

Plus, Ladies Head Coverings & Judaica Gifts



# NURSERY SCHOOL NEWS *Phyllis Denenberg, Director*



Come and see our new state of the art playground!! It is fantastic. I thank all of you who have helped fundraise over the past years to achieve this goal!

Every month we have a fire drill. January's was the fastest by far. Everyone arrived at the "designated area" in 3 minutes 30 seconds. That is down a full 30 seconds from the beginning of school!

Our Computer Tots class on Wednesday afternoons is going well. Registration for this program is continuing to increase. Hopefully this class will be permanent.

On January 23<sup>rd</sup>, we started a new Yoga program. There are three classes on Monday mornings. It is open to everyone. Bnai Tikvah and JCC Nursery Parents get a discount. See our website for more details.

1. Mom & Baby (3 weeks-11 months)
2. Mom & Tots (12 -18 months)
3. Mom & Tykes (18-24 months)

Parent- Teacher conferences went really well. Our teachers are always available to the parents! We have gotten great feedback from parents regarding all the teachers, classes and new programs.

Sign up for our lunch program for the second half of the year has begun. Mondays will be macaroni and cheese. Wednesdays, Pizza. Fridays Bagels. We will also continue our challah program.



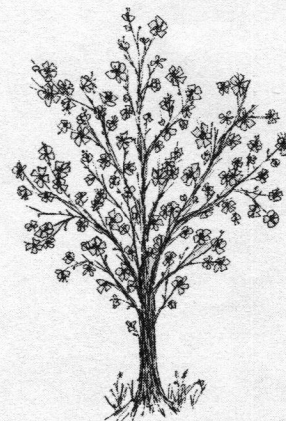
The PAC (Parent Action Committee) Chairs, Jill Glassman and Marla Radice have been doing a great job. After the Scholastic Book Fair, we were able to donate over \$100 of books to various children's charities. We thank Joella Jiorle for taking on the Library Chair. She and her committee are diligently working on setting up our new Sifria (Library). In years past, a library cart would come around and children would be taken out of class to pick out a book. This year, twice a month, the whole class will go to the Sifria in Room 1 for 15 minutes and take out books. In that way, class is not disrupted!

February 21<sup>st</sup> is Picture Day for the Toddler Fun Club and Mrs. Winter's 2 1/2 year old class.

We are looking forward to celebrating Tu B'Shevat on Monday, February 13<sup>th</sup>. Tu B'Shevat is the 15<sup>th</sup> day of the month of Shevat. It is the birthday of the

trees. The yiladeem (children) will be making projects, planting and tasting different fruits grown on trees in Israel. Through the JNF (Jewish National Fund) families will be able to plant trees in Israel.

*Phyllis Denenberg*



## COLLEGE RESEARCH CONSULTANTS

SPECIALIZING IN COLLEGE ADMISSIONS

- \* SELECT THE RIGHT COLLEGE
- \* SECURE FINANCIAL AID
- \* PREPARE COLLEGE APPLICATIONS
- \* LEARN INTERVIEW TECHNIQUES

DAVID MASON, Ed.M.

1398 AXEL AVENUE  
NORTH BRUNSWICK, NJ 08902  
PHONE / FAX (732) 247-1543  
dmasoncrrc@hotmail.com

## MUSIC LESSONS

*By Marty Angstreich*

Now offering private instruction in:



**Voice**  
**Piano / Keyboard**  
**Composition / Arranging**



732-735-5642

martyangstreich@aol.com



# B'NAI TIKVAH YOUTH

## KADIMA

Rachel Sakofs, Advisor  
732-317-4038 kadima@bnaitikvah.org

Now that we have made incredible Hanukah candle drip plates out of glass at Glassworks, exchanged our sour lemons and have Named-That-Movie, it's time to keep the fun going!! Here's what to look forward to for the upcoming months:

- Israeli Dancing**
- Bingo Night**
- Movie Night**
- Purim Carnival Booth Contest**
- A Chocolate Seder with East Winsdor**
- Rock Climbing**
- The Plagues Olympics**
- Regional Events include:**
- Spring Dance**
- 8th Grade Shabbaton**
- Spring Weekend**
- Israeli Day Parade**
- Great Adventure Day**

Look out for more details about events in your mailboxes!!! If you have any questions or comments about Kadima, please contact me, kadima@bnaitikvah.org.

**Phyllis Rosen, CRB, GRI**  
Broker Associate, REALTOR®



**Prudential**

**Fox & Roach REALTORS®**

1500 Finnegans Lane  
North Brunswick, NJ 08902  
Bus 732 297-5000 Fax 732 297-2662  
Res 732 297-5555 PhyllisRosen1@msn.com



☐ An independently owned and operated member of Prudential Real Estate Affiliates, Inc.



Engineers/Inspectors

**Kipcon Inc.**  
1225 Livingston Avenue  
North Brunswick, NJ 08902

**Mitchell H. Frumkin, P.E., R.S.**  
President

telephone:

(732) 220-0200

toll free:

(800) 828-4118

facsimile:

(732) 220-9017

e-mail:

info@kipcon.com  
mfrumkin@kipcon.com

internet:

http://www.kipcon.com

## USY

usy@bnaitikvah.org

Audra Lifson, Advisor  
AIM: blondy0131 732-821-1784

Hey everyone!

I hope everyone enjoyed the beginning of 2006. We look forward to having a lot of great events this year. February begins with HaGalil's Mid-Winter Convention in Ocean, New Jersey.

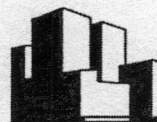
The following Friday night, February 10, North/South Brunswick USY is holding a youth service at the synagogue. Prior to the service, there will be a dinner for USYers and their families. The meal is free for all USYers but family members must pay ahead of time. This is our first Friday night service this year. I hope everyone can attend and spend a very special Shabbat with USY. The next day, February 11, our N/S BUSY President's 18th birthday, we are having Israeli dancing. This event is going to be so much fun. Come prepared to dance and learn. This is a great way to experience Israeli culture and traditions. Look in your e-mails for more information regarding times and the RSVP date.

On Thursday, February 16, we are having a big kickball game in the gym at the synagogue. This event is from 7:30-9 pm. Come to play and cheer on other USYers.

If you would like more information about USY or you would like to join, please e-mail themer100@verizon.net. New members are always welcome. Don't miss out on great events and great USYers.

If you are a USYer who does not receive e-mails, flyers, and/or phone calls about events, don't hesitate to e-mail me at themer100@verizon.net. I don't want you to miss out! I hope to see you at our February events!

Meryl Surks  
Communications VP '05-'06



**FIRST PROPERTY  
MANAGEMENT SOLUTION**

**ARIE BEHAR**  
PRESIDENT

PHONE: 732-937-5080

FAX: 732-937-5088

CELL: 732-236-8867

E-MAIL: ARIEBEHAR@COMCAST.NET

525 MILLTOWN ROAD

SUITE 205

NORTH BRUNSWICK, N.J. 08902



# CASINO NIGHT

*March 11* 7:30-11:30 pm

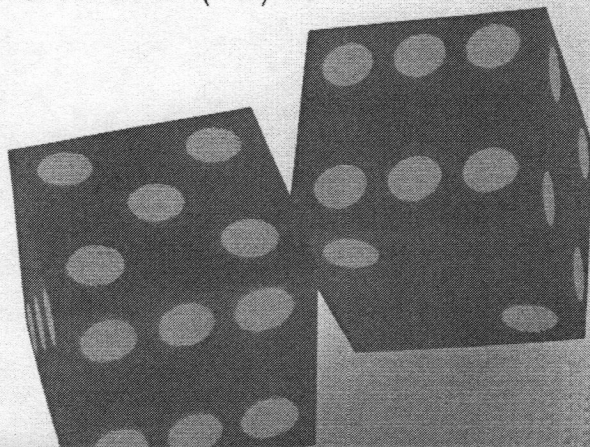
**RESERVE**  
your open seating  
admittance **NOW**  
to a night of gambling,  
dining and entertainment.

for More Info Please Call:

Gary Warner - (732) 422-9292

Allison Nagelberg (732) 846-1464

Mark Sherman (732) 940-1110



**WE STILL NEED PRIZES  
AND VOLUNTEERS!**

**A night not to be missed!**



# B'NAI TIKVAH COMMUNITY

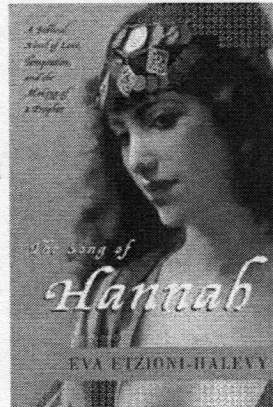
## Sisterhood

Israeli author Eva Etzioni-Halevy's novel, *The Song of Hannah* gives voice to two Jewish heroines of the Bible

**Eva Etzioni-Halevy**

**Sunday, February 12, 10:00 AM**

On Sunday, February 12th, please join Sisterhood as we welcome author Eva Etzioni-Halevy, who is professor emeritus of political sociology at Bar Ilan University in Tel Aviv. Her unorthodox, controversial first novel about sex, love and women in the bible, *The Song of Hannah*, will be the topic of our discussion. **In order for as many members as possible to read the book prior to the author's visit, it will be available in the Sisterhood gift shop for \$11 (less than amazon.com)!!! Please stop by and pick up your copy.**



In the tradition of the international bestseller *The Red Tent* comes a beautiful, sexy novel featuring Hannah, one of the most well-known and beloved heroines of the Old Testament. Hannah and Pninah, once close childhood friends, become rivals for the attention of Elkanah, the man who has married them both. Pninah, passionate and independent, easily bears Elkanah many children, but bitter that he has taken her friend as a second wife, seeks fulfillment with her own secret lover. Hannah, the epitome of goodness and grace, remains completely devoted to her husband, but remains childless for many years, until a promise to God brings her the son she has yearned for.

Despite their differences, these two women must learn to live together, protecting their own interests as well as each other's, while sharing not only the love of their husband, but that of Hannah's son Samuel, who will become one of the great prophets of the Jewish people.

Please join us for this exciting guest speaker and book discussion along with a delicious breakfast starting at 10 AM following Sunday morning minyan.

### Support Our Local Families In Need

At the February 12 meeting we will be collecting granola bars, juice boxes, and healthy kid snacks for local food banks.

Thank you to all the Sisterhood members who participated in the highly successful needy family program. We were able to grant all the Hanukkah wishes of our needy family and elder day groups.

And thank you to all who sent in their donations for our "No Go No Show" vacation.

### Rosh Chodesh Study Group

The next Sisterhood sponsored Rosh Chodesh Study Group meets Tuesday, February 28, 2006 at 7:30pm.

This class will concentrate on studying Women of the Bible. Participants will have an opportunity to select, prior to the class, a particular Biblical Woman to do an in-depth study and analysis of, and then present to the class. The Rabbi will be available to provide resource material as well as any assistance you may need.

Please choose from the following list of Biblical Women. Consider selecting one with whom you may be less familiar.

Eve	Sarah	Deborah
Rebecca	Rachel	Ruth
Leah	Dina	Naomi
Tamar	Miriam	Esther*
Abigail	Batshebah	Hannah
Batya	Yocheved	Michal
Vashti*	Yael	Rachav

Everyone is welcome. It is not necessary to have attended the first class. RSVP's appreciated, call Lynn at 732-297-6691

\*Good choices as Purim is two weeks after this class meeting.



The Martin & Edith Stein Assisted Living Residence

**Toby B. Ehrlich, LCSW, ACSW**  
Director of Marketing

350 DeMott Lane, Somerset, NJ 08873

Toll Free: 800-574-5760 ■ T: 732-568-1155 ■ F: 732-568-0055

Email: tehrlich@steinresidence.org ■ www.steinresidence.org

**Jewish Ritual Art ••• One of a kind,  
hand painted & printed  
Tallit, Chuppah, Covers for Matzah &  
Challah**



To meet with the artist call:  
**Adria Sherman**  
609-799-8807  
ArtbyAdria.com



# B'NAI TIKVAH COMMUNITY

## Judaica Gift Shop Sale

Sunday, February 12, 2006

9:00 AM to 12:00 noon

Save 20% to 40% on all Hanukkah inventory

Hanukkiah, gelt, kid's stuff, bracelets, dreidels and candles galore! We're making space for Purim and Passover merchandise.

**Judaica shop trivia:** Did you know that gelt can be used as treats all year round? Instead of a bow on that birthday present - gelt it! Gelt and milk is a great afternoon snack for those hungry children before they start on their homework! Candles don't spoil - you can buy them now and save for next year.



## Passover Wine Sale Great Selection & Great Prices

Don't wander around your neighborhood liquor store getting frustrated because you can't find a nice Kosher for Passover wine. For your convenience your Passover wine order will be available for pick up in the Sisterhood Judaica Shop.

Keep your eye open for an order form posted on the website and in the March Hakol. Get your order in early. Contact: Joyce Gerbman or Deborah Spigner

**Watch for our Passover specials the weeks of March 19 and 26, and April 2 and 9. Special raffle prizes each week with a grand prize on April 9.**

## Free Open House Jazzercise Class on Monday, Feb. 6 from 9:30-10:30 am in the gym.

For more info contact:

Certified Jazzercise Instructor Chris Bastedo:  
609-275-8000 or the website:

www.southnorthbrunswickjazz.com.

Classes are held every Mon, Wed, Friday mornings  
beginning Feb. 6th.

## MEN'S CLUB

**Alan Freedman**  
Executive Director  
Jewish Sports Hall of Fame

**February 12**  
**9:30 for Minyan**

This promises to be an interesting speaker & presentation. For information about the Jewish Sports Hall of Fame, please see [www.jewishsports.org](http://www.jewishsports.org). \$4 per person for buffet breakfast.

The Jewish Sports Hall of Fame is located in the Suffolk Jewish Community Center in Commack, New York. Last year, a sizable contingent of B'nai Tikvah Men's Club members and their families went to the annual Induction Ceremony. We were so impressed with the program and the facility that we engaged Alan Freedman, the Executive Director of the Jewish Hall of Fame to join us for a presentation.

Alan Freedman has been the Director of the National Jewish Sports Hall of Fame and Museum from its inception in 1993. In addition, Mr. Freedman is the Assistant Executive Director at the Suffolk Jewish Community Center. Alan has a Master of Arts degree in Applied Physiology from Teacher's College at Columbia University and has been at the Suffolk JCC since 1986.

This year's Induction Ceremony is scheduled for April 30, 2006. Honorees will include: John Frank (football), Carrie Sheinberg (skier), Herb Brown and Neil Walk (basketball), Roger Kahn (author), Bob Berland (judo), Donna Orender (WNBA President), Jeff Agoos (soccer), Ilana Kloss (tennis), and Marty Ringer (basketball coach). In addition, other award winners have not been announced as of this writing.

*Ed Birch*  
*Steve Katz*  
*Co-Presidents*

ARE YOU TAKING ADVANTAGE OF ALL  
THE TAX SAVINGS AVAILABLE  
UNDER THE NEW TAX LAWS?

### MATRIX FINANCIAL ADVISORS LLC

Comprehensive Tax Services for Individuals and Families  
•Tax Planning •Tax Preparation •Tax Audit Support



**Jeff Haveson CPA**  
Member AICPA and NJSSCPA  
30 Jefferson Plaza  
Princeton, NJ 08540  
By Appointment 732-329-2230



## B'NAI TIKVAH COMMUNITY

# 50plus

**Next Meeting Tuesday, February 28th**

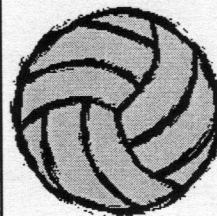
The 50 plus group invites you to our next meeting on Tuesday, February 28, at 1 p.m. in the Synagogue social hall for an afternoon of Fun. Bingo, popcorn, hot coffee or tea, and our delicious dessert table. Bring your friends and prospective members. Come and hear about our future plans.

**COMING IN MARCH:**

### "May I Have This Dance?" A Father/Daughter Dance

**Ages 11 and under  
(down to the stroller)  
Sunday, March 26th  
5:00 - 7:00pm**

**Looking for Moms  
to help on the committee.  
Please contact  
Activities@bnaitikvah.org**



## COED BEACH VOLLEYBALL

**Adults Only  
(players, spectators,  
and partygoers welcome!)**

**Saturday, February 18th  
7:30pm**

**\$15.00 per couple \$8.00 per person**

**Cheaper than a movie,  
More exercise than going out to dinner and  
Lots more fun than staying home  
and reading your BT e-mails!!  
See enclosed flier to join in on the fun!!!**

## A Big *Thank You* To:

Thanks to the following BT Families for donating to the purchase of our own JCC Volleyball Equipment. It will be hours of fun for all age groups!

A Big Thank You to: Amy and Cliff Smith, Janet and Michael Weiss, John and Lou Anne Wolf, Lisa and Leon Suttner, Cindy and Neal Gittleman, Arlene and Marc Lassin, Naomi and Andy Jackenthal, Bonnie and Marc Eisenberg, Serena and Rob Blackin, Cindy and Dave Teicher, Dot and Larry Cohen, and Ruth and Marty Shindler.

*Cindy Gittleman*

Dave Liebmann



**Home Handy Services, Inc.**  
"We do it all large and small"

Ph: 732-951-0700  
Toll Free: 866-716-7085

Fax: 732-951-1113  
Digital Pager: 973-719-7085

NEAL R. GITTLEMAN, D.D.S.

& ASSOCIATES

COSMETIC & RESTORATIVE DENTISTRY

Neal R. Gittleman, D.D.S., F.A.G.D.  
DawnMarie Di Grazia, D.M.D.

279 East Main Street  
Somerville, NJ 08876

p 908.722.2999  
f 908.218.9346



# B'NAI TIKVAH COMMUNITY

## SOCIAL ACTION

### ***FAMILIES: SAVE THESE DATES!***

**Sunday, Feb 12**– Kids visit to The Central New Jersey Jewish Home in Somerset. We are planning a two hour afternoon visit to play Bingo and chat with some residents who just love young visitors. You must have your own transportation to the home. Please call Andrea Katz for exact time and details at 732-329-0687, or [macysmomm@aol.com](mailto:macysmomm@aol.com).

**Thursday, March 9<sup>th</sup> at 6:30 P.M.** TENTATIVE date for NCJW's **Mitzvah Madness** event. When date is confirmed it will be on the synagogue calendar on our website. We will be joining the local chapter of the National Council for Jewish Women in our multi purpose room for an evening of family togetherness and mitzvah making. Children aged 4 and up can draw pictures, do a simple sewing project, fill goodie bags and more to benefit children in hospitals, local elderly and others. NCJW will set up stations for the activities and provide all the materials. All we need to do is show up. Please e mail Laura Waksman at [socialaction@bnaitikvah.org](mailto:socialaction@bnaitikvah.org) with the number and ages of children who will be attending.

### **Donate Your Old Cell Phone To Help**

**Battered Women:** Do you have an old cell phone you don't know what to do with? Let Social Action take it off your hands! Bring your old cell phone with its battery and charger to the synagogue office. Social Action will be donating these phones to women from Women Aware, a shelter for battered women. All donated phones must have a battery and a charger. This program is ongoing.

**Ongoing... Mitzvah Crib:** We continue to welcome donations of new baby items such as diapers, wipes, bottles, toys and clothes which will be distributed to needy families in the area.

*Laura Waksman*

### **Social Action Food of the Month: Items to be distributed to local food pantries**

#### **February:**

Juice Boxes, Snacks for Lunches, Canned Fruit

#### **March:**

Paper Goods: Toilet Paper, Paper Towels, Tissues

## ***A Few Words from the Supermarket Scrip Committee***

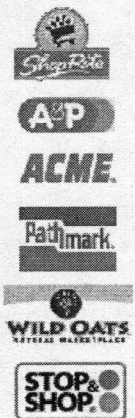
***Hibernate or activate?*** That is this month's question. It is February; the shortest month of the year. The weather often makes this month feel like the longest instead of the shortest. If you like to ski, skate, snowboard or anything related to winter enjoy (activate). However, if you are more like me, then pull out the windshield scrapers, snow shovels, winter boots and fantasize about palm trees, balmy weather and breezier attire (hibernate). Thankfully February is only 28 days this year.

Whichever of the preceding choices is your preference, remember **YOU STILL HAVE TO EAT**. So as you prepare your food shopping lists for your favorite supermarkets (i.e., A&P, Acme, Pathmark, Shop Rite, Stop & Shop and Wild Oats) don't forget to buy supermarket scrip (gift certificates/cards). Congregation B'nai Tikvah (CBT) earns some good funds from the sale of scrip. For this the supermarket scrip committee is grateful and will be of service to you during the month, come snow or sunshine. You may purchase scrip on Sunday mornings during religious school hours, go online at [www.bnaitikvah.org](http://www.bnaitikvah.org) (order form available), calling or visiting CBT during business hours or contacting Rachel Shaneson (chairperson) at [Rachel.Shaneson@bnaitikvah.org](mailto:Rachel.Shaneson@bnaitikvah.org). The committee will gladly accommodate large orders (but order in advance) and personal delivery may be arranged.

This month's tip: Continue to assist your local food pantry by purchasing winter related items. Their shelves constantly need to be replenished of any and all non perishable items. Keep these "comfort food" items on your lists when shopping: hot cocoa, tea, coffee, powdered milk, Parmalat, soup, crackers, peanut butter, jelly, oatmeal, cold cereal, jarred baby food, juices. During a snow day, do you make cakes and cookies with your kids to keep them occupied? Well, why not buy cake mixes, cookie mixes, cooking oil and foil cake pans so food pantry recipient families will also be able to do this with their families?

Until next month, keep warm and continue buying supermarket scrip! See you next month!

*Linda Feinstein*





# CONTRIBUTIONS December 16, 2005 through January 15, 2006

**Yartzeit:**

Gary Horowitz, in memory of Murray Horowitz  
 Mona and Barry Portnoy, in memory of Marilyn Portnoy  
 Rees Klemish, in memory of her mother, Audrey May  
 Arleen and Barry Panson, in memory of Harold Herland  
 Carole and Howard Kalish, in memory of Albert Kalish  
 Barbara and Barry Weinbaum  
 Stacy and Scott Lewkowitz, in loving memory of Howard Barkan  
 Martin and Rochelle Haller, in memory of Rochelle's beloved mother, Sylvia Richter  
 Susan and Andrew Shapiro  
 The Marcou Family, in memory of Louis Wexler  
 Bette and Steve Koffler, in memory of Jeanette Koffler  
 Fran and Phillip Weinstein, in memory of Meyer Weinstein  
 Lucille and Jack Sondike, in memory of Rachel Ladimer

**Rabbi's Discretionary Fund:**

Martha Rotter, thanking the Rabbi for helping when they needed it most  
 Barbara and Harvey Abramson, in honor of the Bar Mitzvah of the grandson of Mr. and Mrs. Solat  
 Barbara and Harvey Abramson, in memory of Elsie and Hyman Friedman  
 Eileen Robison, in memory of her beloved husband Robert  
 Sandra and Ethan Solomon, in honor of the Birth and the Brit Milah of their son Jacob  
 Sylvia and Erwin Lewis  
 Barbara and Harvey Abramson  
 Fern and Allan Katronetsky, for all the Rabbi's assistance and encouragement and in honor of Marc Katronetsky's Bar Mitzvah  
 Shelly and Steve Talmud, in honor of Jesse's Bar Mitzvah  
 Barbara and Harvey Abramson, in memory of Bernard Glick

**Cantor's Discretionary Fund:**

Martha Rotter, thanking the Cantor for helping when they needed it most  
 Fern and Allan Katronetsky, for all the Cantor's encouraging words and confi-

dence and in honor of Marc Katronetsky's Bar Mitzvah  
 Shelly and Steve Talmud, thanking the Cantor for teaching Jesse to "Lein" his Bar Mitzvah Parsha

**Expansion Fund:**

The Spigner family, in memory of Cynthia Spigner  
 Aaron Rosloff, in honor of the Bar Mitzvah of Jason Seidman  
 Martha Rotter, thanking all her friends who supported her and her family and contributed in memory of their beloved husband and father, Herman

**Youth Fund:**

Maxine and Mark Kasdin, in memory of Anita Roller  
 Maxine and Mark Kasdin, in memory of Ann Kernis  
 Sylvia and Erwin Lewis, in honor of the Bar Mitzvah of Jason Seidman  
 Sylvia and Erwin Lewis, in honor of the Bar Mitzvah of Marc Katronetsky  
 Fern and Allan Katronetsky, in honor of Marc Katronetsky's Bar Mitzvah  
 Phyllis and Leon Horlick, in memory of Hyman Arougheti (father of Michelle

LIKE MOST AMERICANS,  
 YOU PROBABLY SPEND  
 MOST OF YOUR TIME  
 EARNING YOUR MONEY

*But, how much time do you actually spend managing it?*



At Wachovia Securities, we can help you manage and protect your wealth by:

- Helping you plan your portfolio, research your stocks, prepare an asset allocation plan and implement and track your plan

- Consolidating your brokerage and banking accounts into one asset management account to help with bill paying and expense tracking
- Providing access to your brokerage and banking accounts online

For more information, call:

**Bruce M. Weinstein**  
 Senior Vice President - Investment Officer  
 989 Lenox Drive, Suite 200  
 Lawrenceville, NJ 08648  
 888-219-2538 • 609-896-4625



**WACHOVIA  
 SECURITIES**

SECURITIES AND INSURANCE PRODUCTS:

NOT INSURED BY FDIC OR ANY FEDERAL GOVERNMENT AGENCY • MAY LOSE VALUE  
 NOT A DEPOSIT OF OR GUARANTEED BY A BANK OR ANY BANK AFFILIATE

Wachovia Securities, LLC, member NYSE & SIPC, is a registered broker-dealer and a separate non-bank affiliate of Wachovia Corporation. ©2005 Wachovia Securities, LLC 62540 5/05



**Eyewear is a great accessory...  
 It can change your appearance...  
 Your personality!**

**Come visit us!**

HOURS: Mon., Tues., Wed., Fri: 10-6  
 Thurs: 10-7:00 Call for Weekend Hours

**647M Rt. 18 • East Brunswick**

(A&P Shopping Center & Arthur Street)

**732-613-EYES (3937)**



# CONTRIBUTIONS December 16, 2005 through January 15, 2006

Greenfield)

Phyllis and Leon Horlick, in memory of Mili Rosloff

**Israeli Youth Exchange Fund:**

**Suse Rosenstock Memorial Fund:**

**Leon Bible Fund:**

**Building Fund:**

Martin Spigner and Family, in memory of Harry Just

Andy, Adrienne and Elyse Ross, in honor of Amy Schwartz for passing the CPA exam

**Passport to Israel Fund:**

Nancy and Elliott Danto, in memory of the sister of Barbara Fiddler

Nancy and Elliott Danto, in memory of Lee Polakoff

Renee, Steve, Noah, Benjy and Daniel Levin, in memory of Renee's father, Dick Schaap

Susan and Harry Rosenzweig, in honor of the Bar Mitzvah of the son of Maxine and Roman Ferber

**Prayer Book Fund:**

Susan and Harry Roesnzweig, in memory of Barbara Fidler's sister, Janice

Ruth, Ellen and Sid Weiss, in honor of the birth of Sidney, grandson of Barbara and Harvey Abramson

Beverly and Wade Lebowitz, in memory of Sam and Regina Brenner

Susan and Harry Rosenzweig, in memory of Barbara Brandspigel

**Family Shabbat Fund:**

**Makhela Fund:**

B'nai Tikvah's Men's Club, in memory of Mili Rosloff

**Sons of Tikvah Fund:**

Blanch Fruhling, in memory of her father, Benjamin Seidenstein

**School Fund:**

Carol and Mark Winter, in honor of the Bar Mitzvah of Jason Seidman

Carol and Mark Winter, in memory of Morris Pearlson

Fern and Allan Katronetsky, in honor of Marc Katronetsky's Bar Mitzvah

**Nursery School Fund:**

Rochelle and Martin Haller, in memory of Hyman Arougheti (father of Michelle Greenfield)

**Ritual Fund:**

**Library Fund:**

Helene and Gary Tinkel, in honor of Rabbi Eligberg marrying their daughter Brenna to Andrew Sniderman  
Bobbie, Barry, Melissa, Jennifer and Michael Freedman, in honor of Estelle Bach and in memory of her beloved husband, Irving

**Torah Restoration Fund:**

**Tzedakah Fund:**

Joyce and Arthur Warner, in memory of Gertrude Warner

Susan and Harry Rosenzweig, in memory of Hyman Arougheti (father of Michelle Greenfield)

**Social Action Fund:**

Martin and Deborah Spigner and Family, in memory of Irving Spigner

**Men's Club:**

**General Fund:**

Ann Gold, in memory of Anita Roller Brian, Elisa and Harrison Berness, in honor of the Bar Mitzvah of Marc

Katronetsky

Rosalyn Karsch, in memory of Paul Karsch

Melvin M. Hurwitz, in honor of the Bar Mitzvah of Matthew Yelo

## Solutions to Your Financial Needs

No matter what your future plans entail, Guardian can help you reach your financial goals. Make an intelligent choice.

Contact our office today!

\*Long Term Care Insurance is not underwritten by Guardian.

Registered Representative of Park Avenue Securities LLC (PAS), 7 Hanover Square, New York, NY 10004. Securities products and services offered through PAS, 1-888-600-4667. PAS is an indirect, wholly owned subsidiary of Guardian.

PAS, member NASD, SIPC.

Disability income products underwritten and issued by Berkshire Life Insurance Company of America, Pittsfields, MA, a wholly owned stock subsidiary of Guardian. Products not available in all states. Product provisions and features vary from state to state.

LIFE INSURANCE  
DISABILITY INCOME INSURANCE  
RETIREMENT SERVICES  
EMPLOYEE BENEFITS  
INVESTMENTS  
LONG TERM CARE\*

For more information contact:  
Keith Zimmerman  
Agency Supervisor  
609.452.8088



**GUARDIAN™**

The Guardian Life Insurance Company of America  
New York, NY (Guardian)



# B'NAI TIKVAH DIRECTORY

TITLE	NAME	PHONE #	E-MAIL ADDRESS
Rabbi	David Eligberg	732-940-1973	Rabbi@bnaitikvah.org
Cantor	Bruce Rockman	732-422-0963	Cantor@bnaitikvah.org
President	Daniel Greenberg	732-297-3780	President@bnaitikvah.org
VP Activities	Cindy Gittleman	732-274-2253	Activities@bnaitikvah.org
VP Administration	Gary Bergman	732-246-7285	Administration@bnaitikvah.org
VP Membership	Ruth Anne Koenick	732-828-8141	Membership@bnaitikvah.org
VP School and Youth	Jeff Cadoff	732-398-3769	Jeff.Cadoff@bnaitikvah.org
VP Ways & Means	Mark Sherman	732-940-1110	Mark.Sherman@bnaitikvah.org
Recording Secretary	Bobbi Binder	732-274-2797	Secretary@bnaitikvah.org
Financial Secretary	Mark Kasdin	732-274-2897	Mark.Kasdin@bnaitikvah.org
Treasurer	Marc Dillman	732-821-7392	Treasurer@bnaitikvah.org
Asst. Treasurer	Frank Waltzer	732-329-9580	Frank.Waltzer@bnaitikvah.org
Past President	Arie Behar	732-422-1495	PastPresident@bnaitikvah.org
<b>TRUSTEES</b>	Art Biderman	732-297-6691	Art.Biderman@bnaitikvah.org
	Larry Cohen	732-821-4376	Larry.Cohen@bnaitikvah.org
	Mitchell Frumkin	732-297-5069	Mitchell.Frumkin@bnaitikvah.org
	Al Garten	732-297-4595	Al.Garten@bnaitikvah.org
	Mark Jiorle	732-803-6299	Mark.Jiorle@bnaitikvah.org
	Jerry Kaminsky	732-297-3766	Jerry.Kaminsky@bnaitikvah.org
	Linda Kohn	732-822-2488	Linda.Kohn@bnaitikvah.org
	Allison Nagelberg	732 846-1464	Allison.Nagelberg@bnaitikvah.org
	Dave Spivak	732-329-2145	Dave.Spivak@bnaitikvah.org
	Gary Warner	732-422-9292	Gary.Warner@bnaitikvah.org
	Paul Zankel	732-254-6465	Paul.Zankel@bnaitikvah.org
<b>VOTING</b>	Doris Sandrowitz	609-860-1498	FiftyPlus@bnaitikvah.org
Fifty Plus	Al Garten	732-297-4595	Al.Garten@bnaitikvah.org
Men's Club	Joyce Gerbman	732-937-5114	Sisterhood@bnaitikvah.org
Sisterhood			
Administrative Director	Nitsat Hadas Elami	732-297-0696	Admin@bnaitikvah.org
Administrative Assistant	Roz Fischman	732-297-0696	Office@bnaitikvah.org
Assistant to the Clergy	Michelle Green	732-297-0696	Michelle@bnaitikvah.org
Programming Director	Lisa Mason	732-297-0696	Programming@bnaitikvah.org
Synagogue FAX		732-297-2673	
B'nai Mitzvah Mentors	Cindy Gittleman	732-274-2253	Mentors@bnaitikvah.org
Cemetery	Bette Koffler	732-329-6518	Cemetery@bnaitikvah.org
College Committee	Marcia Schwartz	732-297-6365	College@bnaitikvah.org
Couples Club	Nadine Weg	732-329-1359	
Feedback Committee	Mitchell Frumkin	732-297-5069	Feedback@bnaitikvah.org
Fifty Plus Group	Doris Sandrowitz	609-860-1498	FiftyPlus@bnaitikvah.org
Hakol Editors	Paul & Nancy Zankel	732-254-6465	Hakol@bnaitikvah.org
Hakol Advertising	Tammy Zimmerman	732-398-1420	Tammy.Zimmerman@bnaitikvah.org
Israel Bonds	Larry Cohen	732-821-4376	Bonds@bnaitikvah.org
Israel Taskforce	Alan Kane	732-418-1913	Alan.Kane@bnaitikvah.org
Judiaca/Gift Shop	Deborah Spigner	732-545-8457	Giftshop@bnaitikvah.org
Junior Congregation	Barry Safeer	732-432-9622	JC@bnaitikvah.org
Kadima	Rachel Sakofs	732-317-4038	Kadima@bnaitikvah.org
Makelah	Cheryl Asnis	732-297-5379	Makelah@bnaitikvah.org
Men's Club Co-Presidents	Steve Katz/Ed Birch	732-821-6201	MensClub@bnaitikvah.org
New Beginnings	Jeanette Bergelson	732-246-1393	NewBeginnings@bnaitikvah.org
Nursery School Director	Phyllis Denenberg	732-297-0295	Nursery@bnaitikvah.org
Passport to Israel Program	Keith Zimmerman	732-398-1420	Passport@bnaitikvah.org
Programs	Cindy Gittleman	732-274-2253	Activities@bnaitikvah.org
Publicity	Bette Koffler	732-329-6518	Publicity@bnaitikvah.org
Religious School Comm. Chairs	Kim Reimann	732-940-4066	Kim.Reimann@bnaitikvah.org
	Lisa Seidman	732-297-6950	Lisa.Seidman@bnaitikvah.org
Religious School Principal	Ann Kanarek	732-297-0295	School@bnaitikvah.org
Ritual/Religious Activities	Bobbi Binder	732-274-2797	Ritual@bnaitikvah.org
Sisterhood President	Lynn Biderman	732-297-6691	Sisterhood@bnaitikvah.org
Scrip Committee Chair	Rachel Shaneson	732-329-2189	Scrip@bnaitikvah.org
Social Action Comm. Chair	Laura Waksman	732- 698-2494	SocialAction@bnaitikvah.org
USY	Audra Lifson	732-821-1784	USY@bnaitikvah.org
Webmaster	Gary Bergman	732-246-7285	Webmaster@bnaitikvah.org
Yahrzeit Plaques	Nitsat Hadas Elami	732-297-0696	Admin@bnaitikvah.org
Youth Committee	Adrienne Ross	732-422-0637	YouthActivities@bnaitikvah.org

Keep our directory up to date. Updates and changes: e-mail Hakol@bnaitikvah.org, or call the editors at 732-254-6465



3 Sh'vat

# FEBRUARY 2006

30 Sh'vat

Sun	Mon	Tue	Wed	Thu	Fri	Sat
<p><b>JANUARY</b> S M T W T F S 1 2 3 4 5 6 7 8 9 10 11 12 13 14 15 16 17 18 19 20 21 22 23 24 25 26 27 28 29 30 31</p>			1 3 Sh'vat	2 4 Sh'vat	3 5 Sh'vat	4 6 Sh'vat Bat Mitzvah: Samantha Berk
5 7 Sh'vat World Wide Wrap Gimmel Class CAFÉ Men's Club	6 8 Sh'vat Board of Directors	7 9 Sh'vat USY Meeting	8 10 Sh'vat Adult Education: Bible People	9 11 Sh'vat Executive Committee	10 12 Sh'vat Birthday Shabbat Alef Class Dinner Naming Ceremony	11 13 Sh'vat Tot Shabbat SHABBAT SHIRA
12 14 Sh'vat RS Tu B'Sh'vat Program Sisterhood Tu B'Sh'vat Seder	13 15 Sh'vat Sisterhood Board TU B'SH'VAT	14 16 Sh'vat Book Club 50+ General Meeting New Beginnings	15 17 Sh'vat Adult Education: Bible People	16 18 Sh'vat USY Meeting	17 19 Sh'vat Family Shabbat Service	18 20 Sh'vat Bat Mitzvah: Ethan Weg
19 21 Sh'vat No Religious School	20 22 Sh'vat Office & Schools Closed PRESIDENTS' DAY	21 23 Sh'vat	22 24 Sh'vat Adult Education: Bible People	23 25 Sh'vat	24 26 Sh'vat Candle Lighting 3 <sup>rd</sup> 5:00 10 <sup>th</sup> 5:08 17 <sup>th</sup> 5:17 24 <sup>th</sup> 5:25	25 27 Sh'vat Bat Mitzvah: Kira Greenberg Bowling League
26 28 Sh'vat Dalet Class PACT New Members Meeting Raise Our Voices For Israel Concert	27 29 Sh'vat RAC Meeting	28 30 Sh'vat 50+ Meeting Sisterhood Study ROSH CHODESH				<p><b>MARCH</b> S M T W T F S 1 2 3 4 5 6 7 8 9 10 11 12 13 14 15 16 17 18 19 20 21 22 23 23 25 26 27 28 29 30 31</p>

**SPECIALIZING IN WATER HEATERS**  
**INSTALLATION & REPAIRS**  
**NEW CERAMIC TILE**  
**DRAIN CLEANING**  
**SUMP PUMPS**

**KITCHENS & BATHS**  
**GARBAGE DISPOSALS**  
**APPLIANCE HOOK-UPS**

**PARK ACRES**  
**PLUMBING & HEATING**  
 KENDALL PARK  
 732 297-7538  
 Harold Small Lic. #5648

Owner will personally come to your home or business  
 -Over 40 years experience-

We recommend Bradford White Water Heaters 

# saskiamarina

## PHOTOGRAPHY

B'nai Mitzvahs • Weddings • Family Portraits • Corporate Events

Highland Park • NJ  
 voice 732-565-0554 • saskia@saskiamarina.com  
 www.saskiamarina.com


SINCE 1934  
 FAITHFULLY SERVING THE PUBLIC

*Gabowitz TV & Appliance Co.*  
 272 RT. 18 (NORTH), EAST BRUNSWICK, NJ 08816

KENNETH KOHN  
 PRESIDENT

TEL 732-257-7846  
 FAX 732-257-5129

By Appointment



**DR. STEVEN B. DICKERT**  
**CHIROPRACTOR**

58 Wetherhill Way  
 (Corner Georges Road)  
 Dayton, N.J. 08810  
 (732) 329-2255

176 Hart Boulevard  
 (Corner Forest Avenue)  
 Staten Island, N.Y. 10301  
 (718) 981-4900