

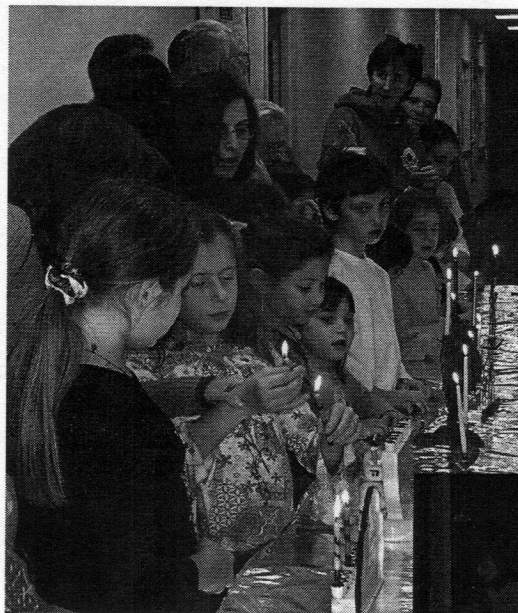


# HAKOL

**OUR MISSION:**  
TO FOSTER A VIBRANT  
EGALITARIAN JEWISH  
COMMUNITY FOUNDED IN THE  
RELIGIOUS CUSTOMS AND  
TRADITIONS OF CONSERVATIVE  
JUDAISM; OFFERING EXCELLENT  
JEWISH EDUCATION AND  
COMMUNITY ACTIVITIES FOR ALL  
AGES WITH COMMITMENT TO  
ISRAEL AND JEWISH  
COMMUNITIES THROUGHOUT THE  
WORLD.

## Inside this issue:

Rabbi Eligberg	2
Schedule of Daily Services	3
Hazzan's Voice	4
Adult Education	5
January B'nai Mitzvah	5
President's Message	6
Membership Minute	6
Letters to the Editors	7
Congregation Events / Info	8
Religious School	9
Nursery School	10
B'nai Tikvah Youth	11
BT Community	12
Contributions	22
Synagogue Directory	23
Calendar	24



Candle Lighting and  
Dreidel Spinning  
at the  
Chanukah Party  
December 25th

Pictures by  
Bobbi Binder



## **Bible People**

*Adult Ed Series*

**Wednesdays  
After Minyan**

*Details Page 5*

## **TORAH READER'S CLUB**

Grades 5 & 6  
(Gimel and Dalet) only

Classes start January 21  
See the Flyer  
in this HaKol

## **"B'nai Tikvah On Stage" Youth Talent Show**

**Sunday  
January 29th**

*Details Page 14*

## RABBI ELIGBERG SPEAKS

### A Torah's Tale

The Jewish community of Kolin into which I was born had existed for hundreds of years dating back to the 14<sup>th</sup> century. Like many of the Jewish communities of Europe my hometown grew slowly from a small handful of people into a thriving community. Progress was not always easy and Jews were twice expelled for Kolin; first between 1541 – 1557 and again between 1561 – 1564. Since then life has gone on uninterrupted though not without challenges to overcome. Remaining in Kolin depended on the good will of the local monarch and the community was often required to pay exorbitant taxes to secure our few rights and freedoms. At times, it felt like local monarchs saw us as a giant bank to finance their wars and whims of fancy.

Despite the financial hardships imposed by local authorities the community continued to grow and in the 1660's established a Yeshiva that would come to be greatly admired. Not too long afterwards, I was painstakingly and lovingly brought into the world and took up residence in my home in 1700. The synagogue building in which I lived was at the end of Nabradbach Street, between the last house, number 157/12 and what was then the city wall of Kolin. Construction of the shul began in 1642 and was completed in 1696; just four years before I arrived! There was always a strong sense of the past in the shul, knowing it had been built on the site of a pre- 1587 synagogue building.

From my place in the Holy Ark and from the Torah reader's podium, I was able to watch the life of the community unfold – the aufrufs of those about to be married; the brit of a boisterous baby boy or the naming of a beautiful baby girl and the look of joy on proud parents and grandparents. Shabbatot and festivals were moments of incredible celebration – the pageantry of Hoshanot on Sukkot; the exhilaration of Hakafot on Simhat Torah; the awe of reading about and reexperiencing revelation at Sinai on Shavuot; and the elation of welcoming the Sabbath Queen each week.

The presence of the Yeshiva in our town meant that I was able to watch great scholars in prayer. One of the most famous was a child prodigy, Samuel ben Nathan Ha Levi, who would go on to author many books on Jewish law and Talmudic commentaries. Watching him in his youth I could tell that he would become a great teacher of Torah. Scholars came to refer to this great sage simple as "The Kolin" and many came to our town to study with him.

Another famous scholar who emerged from our Yeshiva was Rabbi Jacob Illowy who served as the Rabbi of Kolin from 1746-1781. Then there was Rabbi Richard Feder (1875 – 1970) who was an active teacher of Torah in Kolin from 1917-1942 and 1945-1954. He also served as the Chief Rabbi of Bohemia and Moravia.

Our community was blessed with many other notable personalities. There was the Czech-Jewish poet Max Winder and the German-Jewish poet Camill Hoffman who was killed in Auschwitz in 1944. The Petcheck family were well known bankers but their real fame in our community was for their unstinting generosity to those in need.

The demise of my community truly occurred in 1942 when

the Jews of Kolin and its environs were sent to the Terezin concentration camp. Only one hundred and five Jewish souls would survive the Nazi occupation and return to Kolin. I was not amongst the fortunate ones who would return to Kolin, becoming instead a part of the treasures looted by the Nazis from the desolated communities of Bohemia, Moravia and Slovakia.. Along with hundreds of other Torah scrolls, I found myself in storage in a dark warehouse. That we survived the carnage of World War II is truly a miracle but I did not emerge unscathed – smoke, heat, and water have left whole sections of sacred words unreadable – my service to the Jewish people ended.

After the war ended we were cared for by the Czechoslovak government. Through the agency of friends and as an act of good will by the Czechoslovak government 1,654 Torah scrolls were acquired from Artia (the State Cultural Agency) for the Westminster Synagogue in England where we arrived on February 7, 1964. Some of the scrolls became part of a permanent memorial in Westminster Synagogue to the martyrs of the

**“Just like the Torah scroll that is in our lobby, each of us and our family have a tale to tell”**

Shoah from whose synagogues they came. I watched as many other Torah scrolls were distributed around the world “as memorials to the tragedy that befell the Jews and to spread light as harbingers of future brotherhood on earth; and all of them bear witness to the glory of the holy Name.”

Finally, it was my turn. Like other survivors, I was going to a strange new place, not knowing what to expect. Like other survivors, I have a number – I am Torah scroll #443.

I have a new home at Congregation B'nai Tikvah in North Brunswick, NJ. Once again, I can watch a living Jewish community celebrating life cycle events. Once again, I can hear the words of Torah being read and discussed. Once again I have a place and a purpose amongst the Jewish people.

#### Living Words, Living History

Just like the Torah scroll that is in our lobby, each of us and our family have a tale to tell – a story of our family's history, of the journey that brought us to become part of the B'nai Tikvah community. We want to hear and preserve those stories; to make them come alive as they are told and retold.

Thanks to the efforts of Gary Bergman and Ben Gottesman we now have a mechanism to achieve this goal. Together Ben and Gary have created two community web pages. These pages will be filled by members of the congregation sharing their stories and their family's journey.

The first web page focuses on family history and tells your story. The second page is more narrowly defined. It is an invitation to share your family's experience of the Shoah – whether immediate and first hand or whether it touched you through your extended family. One of our hopes is to share some of the Shoah stories as part of our annual Yom Hashoah commemoration on April 24<sup>th</sup>. This is truly an opportunity for the whole family to explore its past and discover its special place in the tapestry of the Jewish people. Additional information and helpful suggestions will be available by going directly to either page: [bnaitikvah.org/familyroots.html](http://bnaitikvah.org/familyroots.html) and [bnaitikvah.org/shoah.html](http://bnaitikvah.org/shoah.html).

I eagerly look forward to reading your stories.

*With blessings, Rabbi David M. Eligberg*

## RABBI ELIGBERG SPEAKS

### Highlights from American Jewish History

2 Tevet - The first written proposal to introduce Reform Judaism in America was published in a memo signed by 47 members of Congregation Beth Elohim of Charleston, S.C. on December 23, 1824.

6 Tevet - A seminary for the training of traditional rabbis and teachers was opened by its founder, Dr. Sabato Morais, on January 2, 1887, in New York. The seminary, a predecessor of the Jewish Theological Seminary, used the facilities of Congregation Shearith Israel. The first class had an enrollment of eight students, among them Joseph H. Hertz, who later became chief rabbi of the British Empire.

11 Tevet - President Abraham Lincoln promised, on December 14, 1861, to press for immediate passage of an amendment to the chaplaincy law, which originally provided for Christian military chaplains only. Soon thereafter Rabbi Arnold Fischel became the first Jewish chaplain. This removed the last of the Jewish disabilities in the United States due to creed.

14 Tevet - The first fund-raising drive of the American Jewish Joint Distribution Committee was launched on December 21, 1915.

16 Tevet - General-in-Chief Henry W. Halleck instructed General Ulysses S. Grant, on January 7, 1863, to revoke Order No. 11, which had provided for the expulsion of all Jews from the Department of Tennessee.

17 Tevet - Congregation Shearith Israel of New York purchased, on December 7, 1728, a lot on Mill Street, lower Manhattan, for the purpose of erecting the first synagogue structure in New York. Shearith Israel, organized in 1656, is the oldest congregation in North America. Its first synagogue was dedicated on April 8, 1730 (Nisan 21). The six oldest congregations in the United States are: (1) Shearith Israel, New York City; (2) Yeshuat Israel, Newport, R.I., organized in 1677; dedicated its synagogue in 1763; (3) Mikveh Israel, Savannah, Ga., organized in 1733; built its first synagogue in 1820; (4) Mikveh Israel, Philadelphia, Pa., organized in 1745; built its first synagogue in 1782; (5) Beth Elohim, Charleston, S.C., organized in 1749; built its first synagogue in 1794; (6) Beth Shalom, Richmond, Va., organized in 1789.

18 Tevet - The organizational meeting of the National Council of Young Israel, an association of Orthodox synagogues in the U.S., met on December 28, 1912.

21 Tevet - A Russo-U.S. trade treaty, originally ratified in 1832, was abrogated by President Taft on December 31, 1912, because of Russian discrimination against Jews who were American citizens.

24 Tevet - Haym Salomon, financial agent of Robert Morris, superintendent of finance during the Revolutionary War, died

on January 6, 1785.

25 Tevet - Maryland's "Jew Bill," which went into effect on January 5, 1826, qualified Jews for public office if they subscribed to a belief in rewards and punishments in the hereafter. It was not until 50 years after the establishment of the United States that Maryland permitted its Jewish citizens to hold public office. Ever since the founding of the colony as an asylum for Catholics in 1634, the denial of the validity of Christianity had been a crime punishable by death. Theoretically, every Jew residing in Maryland was liable to legal execution for professing Judaism. The practice of Judaism was legalized in Maryland in 1776 but many civic restrictions had remained in force.

Trivia Question from the HaKol Editors:

**In 1800, What US City Had The Largest Jewish Population?**

Hint: It wasn't New York or Philadelphia!  
Answer on Page 22



### SCHEDULE OF DAILY SERVICES

Sunday	9:00 AM Shahareet	7:30 PM	Mincha/Maariv
Monday		7:30 PM	Mincha/Maariv
Tuesday		7:30 PM	Mincha/Maariv
Wednesday		7:30 PM	Mincha/Maariv
Thursday	7:00 AM Shahareet	7:30 PM	Mincha/Maariv
Friday		8:00 PM	Kabbalat Shabbat
Saturday	9:30 AM Shabbat	*:PM*	Mincha/Maariv

\*As appropriate for the time of year

Babysitting available Shabbat morning 10:00—12:00\*\*

## OUR HAZZAN'S VOICE Cantor Bruce Rockman

### I Continue to Struggle

I'm sure you've done the same thing—you pick up a random magazine in a lobby or doctor's office and you find something that makes you think. Recently I found myself reading such a random article, but really my choice was not so random in that it was about Judaism. The point of the article was that we have a mission in Judaism to do acts of loving-kindness, to help repair and heal the world. These concepts, while important to all Jews, are the mission of Reform Judaism. As Conservative Jews, while we believe strongly in this concept, we concentrate on the conser-

**"Where does our inspiration come from?"**

vation of traditional Jewish practices, such as the observance of Shabbat and the laws of kashrut. Whether or not you consider yourself observant, it is the belief of the Conservative movement that by adhering to traditional practices we will then do more mitzvot and learn to better understand our mission, leading to our building a better, godlier world. As synagogue participants we have made a leap of faith and contribute to the growth of our

Jewish ideals. Our institutions are our framework. We look to its leaders to set examples for us to live by, and then we follow! And then we follow?

There are so many fine examples of people who do so much for others, but caught up in our lives, why question the source of their inspiration? Where does our inspiration come from? The simple answer is our belief in God and the mission or journey that we are engaged. But for most of us, inspiration is our barrier.

In my articles I struggle to express my thoughts. I struggle with the thought that I may offend someone or misrepresent Judaism. I struggle with my personal search for inspiration while at the same time trying to inspire you. I often wonder about the level of inspiration that emanates from our religious services. For many, their reason to attend services is other than to praise God. But, once you are here, for whatever reason, it is the hope of the clergy that you receive some measure of inspiration from the melody of our prayers or the pronouncements of the Rabbi's words. For all of us, it is an opportunity to be inspired by one another.

Prayer is important. It is a way to connect with God and our community. Prayer can lead to a better life. I struggle in my personal prayers and struggle to make prayer more accessible to our congregation. Whether you read Hebrew, English, Russian, or French prayer can be meaningful. If you are Jewish, or a Christian parent of a Jewish child, the power of prayer touches your soul. We yearn to understand and cope with our complicated world. Praying to God, in a community that believes that we can make a difference, will help to heal the world.

*Worship Adonai in Gladness...with joyous song!*  
Cantor Bruce Rockman

### Save These Dates: February 11th & 26th

On Saturday night, **February 11**, *The Sons of Tikvah Band* will lead our fifth annual Shabbat Shirah Sing Along at 8PM. We are hopeful this you will plan to participate in this joyful night of Jewish music. The band will perform many of our favorites with many special audience participation selections.

The annual *Raise Our Voices* concert will take place at Anshe Emeth Memorial Temple in New Brunswick. Over 200 performers from our area synagogues will help to raise money to help those struggling to save Ethiopia's Jewish population. Due to limited space, this year there will be 2 concerts on **Sunday February 26<sup>th</sup> at 2PM and 6PM**. With a limited amount of tickets, the shows are expected to sell out quicker than usual.

## HAKOL

The Newsletter of  
**Congregation B'nai Tikvah**  
**JCC of North & South Brunswick**  
1001 Finnegan's Lane  
North Brunswick, NJ 08902  
732-297-0696

Published monthly, except for July and August. Submissions are welcomed about Congregation events, group activities, and other material relevant to the local Jewish community.

**All Submissions for the February HAKOL must be in by January 15th**

**We recommend sending submissions and correspondence via e-mail to:**

**[Hakol@bnaitikvah.org](mailto:Hakol@bnaitikvah.org)**

All e-mail submissions are acknowledged via e-mail. You may also put submissions in the HaKol mailbox in the synagogue office. All submissions are subject to available space and editorial constraints. Please call Paul or Nancy Zankel at 732-254-6465 if you have any questions.

#### SUBMISSION FORMATS:

**TEXT:** Editorial submissions should be in plain text format, with no formatting, tabs, columns or fonts. Just type an e-mail, or attach a file in one of the following formats: MSWord, Wordperfect, or MSPublisher. Graphics and photos should be submitted separately, rather than inside other files or documents.

*Advertisements should be submitted as graphic files.*

**IMAGES & GRAPHICS:** Digital images: (Preferred) 300 dpi black & white/ grayscale pdf, jpeg, bmp, or tiff files. Scannable Images: For good scan results, submit 300dpi (minimum) black and white graphics printed on glossy photo paper in hi-res or photo mode.

**ORDER FORMS & FLYERS:** Submit order forms and inserts to be sent with the Hakol mailing *to the editors* by the 15th of the preceding month.

**ADVERTISING INFO**  
**Tammy Zimmerman:**  
732-398-1420

# ADULT EDUCATION

**Back by Popular Demand!**

## ***BIBLE PEOPLE***

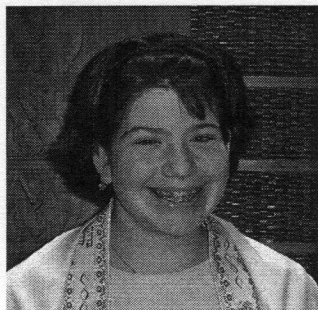
Presented by Visiting Rabbis

**MARK YOUR CALENDARS!**

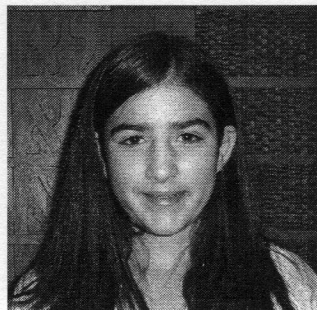
**Wednesdays, January 11th, 18th, 25th, February 8th, 15th, 22nd**

Rabbi	Visiting From	Date	Subject
Eli Garfinkel	Temple Beth El	January 11, 2006	Korach
Daniel Fellman	Anshe Emeth	January 18, 2006	King Solomon
Eugene Wernick	Beth Ohr	January 25, 2006	David HaMelech
TBA		February 8, 2006	TBA
Stephanie Dickstein	Jewish Health, Healing, and Recovery Network	February 15, 2006	TBA
Robert Alpert	East Bruns. Jewish Center	February 22, 2006	Esther

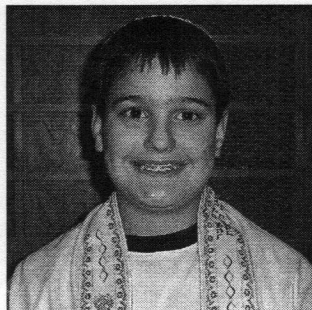
## JANUARY B'NAI MITZVAH



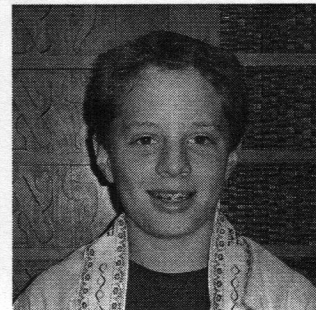
**Tamara Rucko**  
Jan. 7  
Mitchell Rucko



**Talia Rothfus**  
Jan. 14  
Joel & Jamie Rothfus



**Daniel Shapiro**  
Jan. 21  
Andrew & Susan  
Shapiro



**Corey Garyn**  
Jan. 28  
Gregory & Jodee Garyn

## PRESIDENT'S MESSAGE

Dan Greenberg

By the time you read this, the members of the congregation will have picked a new logo for our synagogue in an election that took place online, by mail, and in person at both the congregational meeting and the Hanukah party. (Thanks go out to congregant David Spivak of Design Solutions in Hightstown for the all the new designs that he spent so much time developing!) This new logo is the first step in a campaign to step up the visibility and profile of our synagogue and Jewish Community Center in both the surrounding Jewish and secular communities.

Why? Because we want B'nai Tikvah to be the first place people think of when they are considering joining a synagogue, when they are planning a party, when they are looking for a place to get married, and when they are looking for community activities.

Thanks to the hard work of so many volunteers, as well as our professionals, there is always something going on at our building, for people of all ages. The hardest part is making sure that the community knows about

what's going on. And that is where we need you to help.

For example, on January 29<sup>th</sup>, we are going to be holding our Youth Talent Show in the Multipurpose Room, something that we hope to make an annual event. This promises to be a fantastic afternoon of fun and entertainment. And of course, we want you to come and enjoy yourself. But we also need you to help spread the word to others, so we can realize our goal of a sold out room.

On March 11<sup>th</sup>, we are going to have our Casino Night. The last time we had Casino Night, we had to limit ticket sales to 350 people, and had to turn people away due to space limitations. Now that we have an expanded facility, we can accommodate more, but we need your help in creating the buzz in the community that will make this the successful fundraiser that we need it to be. Tell your friends, your families, and your neighbors to hold the date and to get tickets as soon as they are available. We had a blast last time, and the committee has been working intensely on the hundreds of details to make sure this year's event is even better, so now we need you to do your part! Spread the word!

And of course, we need your help in making sure that people realize what a terrific synagogue we have. If you know anyone who is looking to join a synagogue, or just wants to talk about what we have to offer, please spend some time with them. Drop Ruth Anne Koenick (our membership VP) or me an email or a phone call. We would be happy to follow up and answer any questions they may have.

We are an exceptional community, and with your help, we are going to continue to thrive for generations to come.

*Dan Greenberg*

## A MEMBERSHIP MINUTE

Ruth Anne Koenick, VP Membership

### Mazel Tov to...

**Marina & Nicholas Ostrowicki** on the birth and naming of their daughter, Sadie Rose.

**Kellie and Richard Altman** on the Bat Mitzvah of their daughter Brittany.

**Allan and Fern Katronetsky** on the Bar Mitzvah of their son Mark.

**Lisa and Richard Seidman** on the Bar Mitzvah of their son Jason.

**Steven and Sharon Weinreb** on the bar Mitzvah of their son Jacob.

**Ellie and Bill Greenberg** on the birth of their granddaughter, Morgan Leah Zink.

**Barbara & Harvey Abramson** on the birth of a grandson, Sidney Leonard Abramson.

**Jenna & Eric Lawson** on the birth of their son and to the proud grandparents Jon & Susan Kleinman.

**Jesse Olitzky** on being placed on the Mercaz slate for the World Zionist Organization elections.

**Steve & Shelly Talmud** on the Bar Mitzvah of their son, Jesse.

### Our sincere condolences to:

**David Teicher** on the death of his father Irving.

**The family of Herb Feldman.**

**Alan Brown** on the death of his father Charles.

A Rfuah Sh'layma and a speedy recovery to all who have been ill in the previous month. We look forward to seeing you soon.

### We warmly welcome:

**Nicole and Josh Cohen** home to B'nai Tikvah. Many of us know Nicole, as she is Elliot and Nancy Danto's daughter. Nicole and Josh were married this past summer and currently live in Yardville, New Jersey. Nicole works for Micro Innovations (a computer accessory distributor) in Edison and Josh is a marketing account manager for the Times of Trenton.

Their son Jordin, is in the first grade and loves school. Nicole describes him as very inquisitive and he takes a strong interest in Shabbat dinners at his grandparents, Nancy and Elliot. The Cohen's also have a 4 month old English bulldog named Buddy.

Nicole has very fond memories of B'nai Tikvah when she was growing up, including fun in religious school, especially during the holidays. Making decorations to hang up in the Sukkah and then at night, saying the blessings and having deserts are some of her most vivid recollections. Both Nicole and Josh look forward to strengthening their connection with their B'nai Tikvah family and traditions.

The next Membership Committee meeting is January 4 beginning at 7:30 with minyan. February 16 and March 15 are also Membership Committee meetings. All are welcome.

# LETTERS TO THE EDITORS

## THE UNSUNG HEROES

I very much enjoyed Hadas's column in the last issue of Hakol in which she described the marvelous collaboration among some of our members who donated their time, their money, and/or their effort to get the Beit Midrash renovated. I wish to make Hadas and the rest of congregation aware of the roles played by two additional "unsung heroes" who, in my opinion, are responsible for keeping the renovation of the Beit Midrash high on B'nai Tikvah's list of priorities.

Ruth and Bernie Adler are founding members of our Thursday morning minyan. Ever since that group started davening together during the winter of 1987-1988, Ruth and Bernie have been passionate advocates of dedicating a "corner" of our building for the creation of a smaller, more intimate worshipping space. Upon the institution of our daily evening minyan in 1990, the need for such a space became even more noticeable.

Despite the limitations of space imposed by our pre-expansion building, the ritual committee, at Ruth and Bernie's urging, did a commendable job creating temporary chapel space - first in our Hei Classroom and most recently in the same space jointly occupied by the Youth Lounge and Library. Still, Ruth and Bernie felt that B'nai Tikvah could do better by its Beit Midrash.

When Mark Roller and I, as Capital Campaign Co-Chairs, approached the Adlers in 2000, they told us that a dedicated, comfortable space for the Beit Midrash was their priority vis-à-vis the expansion of Congregation B'nai Tikvah. Were it not for Ruth and Bernie Adler, I seriously doubt whether the subject of a dedicated Beit Midrash would have been considered by the expansion committee. For the last 18 years Ruth and Bernie Adler have work selflessly for the creation and appointment at B'nai Tikvah of a dedicated Beit Midrash, worthy of the sacred texts that are chanted there, the prayers that are recited there, and the people who pray there.

I would like to thank Ruth and Bernie Adler for their devotion to the Beit Midrash. Their advocacy of this project gave B'nai Tikvah's leaders the impetus to get the job done. Ruth and Bernie's financial support of the Beit Midrash gave B'nai Tikvah the means to get the job done.

*Well done, Ruthie and Bernie!! Todah Raba!!*

*Jeff Schwartz*

## MY EXTENDED FAMILY

When the chips are down is when you know who counts. I'm not going to bore you with a long list of name, and besides I would be sure to miss some important ones. I do want to write about the importance of the network of congregation, friends and neighbors.

The outreach that I have experienced following Mili's death has touched me in ways that I will never be able to express to my own satisfaction. It has been mind boggling and far beyond my expectations. Although the funeral took place only a few hours before Kol Nidre, still people made a point of rendering whatever comfort they could during that truncated shiva period. I was especially touched by those who went out of their way to express condolences even though they are not particularly fond of me. They simply put aside their personal feelings to reach out to a fellow human being in need of comfort.

That is the essence of humanity, (menchlichkeit) family and Jewish tradition. It has been two months, as of this writing that Mili has passed away, but the feeling that I carry for the coat of warmth and concern that was gifted to me, still sits lightly on my shoulders and gladdens my heart.

I expect that from time to time, should I feel the need, I can just pull it a little tighter.

*With abiding affection,  
Aaron Rosloff*

*Letters to the Hakol are welcome from all congregants, on issues relevant to the local Jewish community. Publishing of letters is subject to space availability.*

\*\*\*\*\*

**JANUARY**

**FAMILY SHABBAT**

**DINNER**

**Followed by**

**Family Shabbat Services**

**Friday, January 20, 2006**

**6pm**

**See the flyer in this month's**

**Hakol to RSVP.**

\*\*\*\*\*

# saskiamarina

## PHOTOGRAPHY

B'nai Mitzvahs • Weddings • Family Portraits • Corporate Events

Highland Park • NJ

voice 732-565-0554 • saskia@saskiamarina.com

www.saskiamarina.com

## CONGREGATION EVENTS AND INFO

### *A belated thanks to our sponsor...*

The Nagelberg family was inadvertently left off the list of sponsors for Simchat Torah. Sorry for this omission and thanks for the donation!!!

*Bobbi Binder*

### Coming in February:

## LUNCH AND SING In celebration of SHABBAT SHIRA Saturday, February 11

Please join us after Shabbat services as we enjoy lunch and singing in celebration of Shabbat Shira

~~~~~

## TU B'SHEVAT SEDER Sunday, February 12

Tu B'Shevat, the 15th day of the Jewish month of Shevat, is a holiday also known as the New Year for Trees. There are a few customs or observances related to this holiday. One custom is to eat a new fruit on this day, especially fruit that is indigenous to the Land of Israel. Some people plant trees on this day.

At Bnai Tikvah we hold a **Tu Bishvat Seder**. Please join us for this fun-filled event and dinner on Sunday, February 12, 2006 at 4:30pm.

To sign up for these events, see the flyers included with this HaKol

## From The Webmaster Weather Closings

Now that we have many more activities scheduled during the winter, we needed an effective way to notify both congregants and those renting our facilities to be alerted if the building were to be closed due to weather conditions. Procedures are now in place for the Administrator, Vice Presidents, or President to be able to post such closings on our website as applicable. When in doubt about the building complex being closed, just check our home page at [bnaitikvah.org](http://bnaitikvah.org).

The Nursery School Director was also given similar control of the new Nursery section of our website that she can update from home when necessary. In addition to the traditional radio announcements, the Nursery School parents can now check the website for weather closings. The page to bookmark for the Nursery School is: [bnaitikvah.org/nursery.html](http://bnaitikvah.org/nursery.html)

*Everyone talks about the weather,  
but, here at B'nai Tikvah, we actually do something.*  
*Gary Bergman,  
Webmaster*

### Planning a Bar/Bat Mitzvah, Wedding or Party? You are invited to attend our

## PARTY SHOWCASE

Sunday, Jan. 29, 2006 • 12 pm – 4 pm

Snowdate: Sunday, February 5

### Meet over 25 exciting vendors

Photographers, videographers, florists, invitation designers, entertainers, party planners, & many, many more!

**Food samplings prepared by our favorite caterers**



★ Live DJ ★

Performance by  
Jeffrey Craig  
Entertainment

## Temple B'nai Shalom

Fern and Old Stage Roads • P.O. Box 957

East Brunswick, New Jersey 08816

**732-251-4940**

or 908-665-4165



## RELIGIOUS SCHOOL REPORTS

Ann Kanarek, Director

### Our Religious Schools, Past, Present and Future

The first Jewish school in the United States was begun in 1731 by members of Congregation Shearith Israel in New York City and was the forerunner of an array of institutions dedicated to engaging the American Jewish Community in Jewish learning. The first Sunday school was established in Philadelphia in 1838 by Rebecca Gratz. Close on its heels came programs ranging from one-day-a-week schools to all-day schools, which provided both general and Jewish education.

By 1900, the tide of Jewish immigration to America created new opportunities in Jewish education. The combination of population and human resources guaranteed, at least in the major cities, a reservoir of pupils sufficient to establish effective schools. Influence of the European Yeshiva was evident in the establishment of Orthodox day schools and at the same time, a network of Yiddish schools was successfully established by Jewish socialists.

The Talmud Torah model was brought to the United States in 1910 by Boards of Jewish Education for the improvement and promotion of Jewish religious primary education, and established the principle of communal responsibility for that education. Early on the Talmud Torah consisted of 10 hours of instruction; every afternoon Monday through Thursday, and Sunday morning.

Today, the school of choice for the great majority of Jewish families remains the part-time afternoon/weekend school. Time available for schooling is a powerful determiner of curriculum. In 2 to 5 ½ hours a week, educators cannot provide the depth of instruction that Jewish students received generations ago. All Jewish schools share the same vision to educate their students with the desire and ability to conduct their lives in keeping with the teachings of our tradition. How we do it, and the various components of the tradition - God, Torah, and Israel - are understood and interpreted differently. As we look toward the future, we need to look at several questions and develop our own set of answers to them. How can we:

- \* Develop a vibrant meaningful Jewish community.
- \* Effectively provide Jewish education for adults and teenagers as well as children.
- \* Provide positive experiences for young Jews
- \* Make sense of Judaism for modern American Jews so that we see ourselves as living Judaism, not merely students of some ancient culture.

The answers to these questions are ever changing as our communities evolve and change within the times. Here at B'nai Tikvah, our Religious School is always working to improve and adjust as we seek to educate and provide memorable Jewish experiences for our students. We want to give our children a foundation for Jewish life and an identity that will last their whole lives. We strive to make Judaism come alive for our children.

### WINTER WEATHER SCHOOL CLOSINGS

In the event that it becomes necessary to cancel school due to inclement weather, every effort will be made to ensure that school closing announcement are made on radio ( **WCTC 1450 AM and WMGQ 98.3 FM**) and on their website ([www.wctcam.com](http://www.wctcam.com)), click on storm closings and "B" for B'nai Tikvah. School closings will be automatic with the cancellation of North or South Brunswick schools.

### RELIGIOUS SCHOOL REMINDERS

**Sunday, Jan. 8:** Kindergarten P.A.C.T. Program, *The Shema Pajama Party*, 9am-10:30am

**Sunday, Jan. 15:** **NO RELIGIOUS SCHOOL**, *Professional Growth Day*

**Monday, Jan. 16:** **NO RELIGIOUS SCHOOL**, *Martin Luther King Day*

**Sunday, Jan. 22:** Dalet class C.A.F.E. (Cultural Arts for Enrichment) program, *Yad workshop*

**Sunday, Jan. 29:** Bet class P.A.C.T.. Program, *Family G-d Talk*, 10am-12:05pm

**Sunday, Feb. 5:** Gimel class C.A.F.E. (Cultural Arts for Enrichment) program, *Chamsa workshop*. Hei class: *World Wide Wrap*, Tefillin workshop

**Friday, Feb.10:** Alef Naming Dinner (6:30pm) and Ceremony (8:00pm)

NEAL R. GITTLEMAN, D.D.S.

& ASSOCIATES

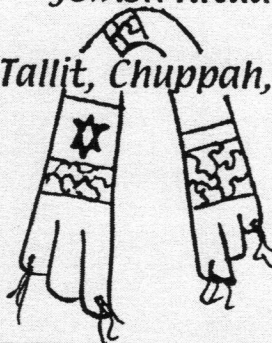
COSMETIC & RESTORATIVE DENTISTRY

Neal R. Gittleman, D.D.S., F.A.G.D.  
DawnMarie Di Grazia, D.M.D.

279 East Main Street  
Somerville, NJ 08876

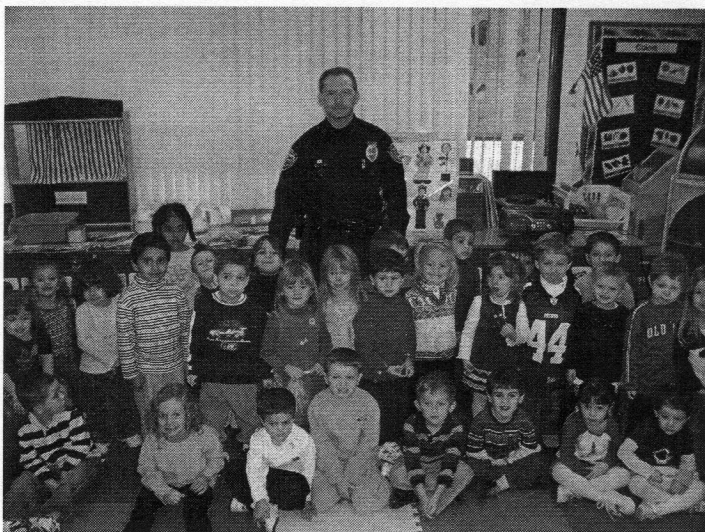
p 908.722.2999  
f 908.218.9346

*Jewish Ritual Art* ••• *One of a kind,  
hand painted & printed  
Tallit, Chuppah, Covers for Matzah &  
Challah*



To meet with the artist call:  
**Adria Sherman**  
609-799-8807  
[ArtbyAdria.com](http://ArtbyAdria.com)

# NURSERY SCHOOL NEWS *Phyllis Denenberg, Director*



Community Helpers: 3's & pre-k with Officer Rickle.

Welcome back! I hope everyone had a nice vacation. At the end of this month, the Nursery is starting registration for September 2006 and for the **NEW** Summer Day Camp program starting this June. We are expecting an increase in registration, especially with all the new programs that we are offering. Please check out our new website which is under construction: [bnaitikvah.org/nursery.html](http://bnaitikvah.org/nursery.html). Please call me for any questions you may have and make an appointment for a tour and I would be glad to show you around.

We are starting a trial computer class given by Computer Tots, given Wednesday afternoons after Enrichment (3:15-4:15). If registration increases for the class, we will open more time periods if necessary and it will continue through June.

Our new state of the art playground is in the process of being installed. We cannot wait to try it out!

Parent- Teacher conferences will take place this month. Conferences for the 2 ½'s will be on Thursday, January 12<sup>th</sup>. The 3's conferences will be on Wednesday the 11<sup>th</sup> and Friday the 13<sup>th</sup>. The pre-k conferences will take place on Wednesday January 18<sup>th</sup> and Friday the 20<sup>th</sup>. All conferences will be during regular school hours. Sign up sheets will be posted outside the classrooms. A sign up sheet will also be posted outside **my** office for those who may want to speak to me. My door is always open.

**Phyllis Rosen, CRB, GRI**  
Broker Associate, REALTOR®



**Prudential**

**Fox & Roach REALTORS®**

1500 Finnegans Lane  
North Brunswick, NJ 08902  
Bus 732 297-5000 Fax 732 297-2662  
Res 732 297-5555 [PhyllisRosen1@msn.com](mailto:PhyllisRosen1@msn.com)



🏠 An independently owned and operated member of Prudential Real Estate Affiliates, Inc.

## *Thank You From Carol Winter*

The afternoon of Sunday, November 20, 2005, was truly overwhelming for me, when the JCC together with Congregation B'nai Tikvah held a luncheon in my honor, celebrating 20 years of teaching in the nursery school.

On behalf of everyone at the nursery school, I would like to thank Phyllis Denenberg for bringing to our school a passion for teaching, a love of Judaism, a feeling of warmth and affection for younger children, endless enthusiasm, fabulous new ideas, and a tremendous sense of organization. We appreciate all that she does each day to make our school a safe, cheerful learning environment for both teachers and students. It was Phyllis who called me into her office just a few weeks ago, and after reviewing my file, noted that I had been teaching in the nursery school for 20 years. She felt that this was quite an accomplishment, worthy of recognition, and so began the thinking, the planning, the details, and the overall logistics necessary to put together this wonderful luncheon.

Thank you to our wonderful nursery school staff for presenting me with a beautiful pin representing the four matriarchs of Judaism—Rachel, Rivkah, Leah & Sarah.

Thank you to all of the congregants for your very kind and thoughtful tributes in my honor. As I turned each page of my special tribute book, the names of the families who so generously contributed to this memorable book brought tears to my eyes.

Thank you to Rabbi Eligberg, Cantor Rockman, Danny Greenberg, Cindy Gittleman, Jeff Cadoff, Gary Bergman, the Administration and the Board of Trustees, as well as so many dedicated congregants who give of their time and energy everyday to create an atmosphere in the synagogue where families feel comfortable, have fun, and make friends that last a lifetime. The warm and friendly atmosphere of Congregation B'nai Tikvah has made it feel like my home away from home for the past 20 years. Thank you for the beautiful necklace presented to me by the Congregation. I will wear it with the utmost pride and joy.

I pray that G-d will continue to be good to me and grant me the strength, the energy, the enthusiasm, the patience, and the spirit to keep on doing what I love most – Teaching – for many, many years to come!

Thank you to so many congregants for sharing this very special honor with me.

*With love and appreciation,  
Carol Winter*

# B'NAI TIKVAH YOUTH

## KADIMA

Rachel Sakofs, Advisor  
732-317-4038  
kadima@bnaitikvah.org

### NAME THAT VIDEO

Wednesday, January 4th, 6- 7:30PM

We will be playing "Name that Video", a game where we will all try and show off our movie knowledge by guessing the right movie the fastest!! We just ask that everyone bring at least one video (VHS) fast forwarded to a hard to guess or tricky part... then let the guessing begin!!

### KADIMA FUN DAY

Sunday, January 29th (rain date 2/12)

Come spend the day at Temple Beth Shalom in Livingston, with all your Kadima friends for FOOD, FUN, and EXCITEMENT! Please check your mail for a flyer with more information.

If you have any questions or comments about Kadima, please contact me, kadima@bnaitikvah.org.

Rachel Sakofs



### B'nai Mitzvah Class Meetings 2007, 2008 and 2009

Parents of children in the above B'nai Mitzvah classes are invited to attend meetings on the following dates:

|                  |                      |           |
|------------------|----------------------|-----------|
| BM Class of 2007 | Thursday, January 12 | 7:30 p.m. |
| BM Class of 2008 | Thursday, February 9 | 7:30 p.m. |
| BM Class of 2009 | Thursday, March 16   | 7:30 p.m. |

Important information will be discussed at each meeting so we hope to see you there.



## NEED A TALLIS?

Fabulous Selection for Women & Men  
& Bar/Bat Mitzvahs  
Discount Prices

Call Amy Zelka in East Brunswick at:

**732-613-8018**

[www.ekippah.com](http://www.ekippah.com)

**YARMULKAS by AMY L.L.C.**

Plus, Ladies Head Coverings & Judaica Gifts

## USY

[usy@bnaitikvah.org](mailto:usy@bnaitikvah.org)

Audra Lifson, Advisor  
AIM: blondy0131 732-821-1784

2005 was a great year for North/South Brunswick USY! We've had a Water Balloon Toss, Basketball Night, a Hanukkah Party, and many other great events. We hope 2006 is as great as this past year was.

### Sunday, January 8th: Munich.

Our first event of the new year is a viewing of the movie Munich. We will be viewing the film at Regal Cinema on Route 1 on North Brunswick. For more information about the movie go to [www.munichmovie.com](http://www.munichmovie.com). It is rated R, so permission slips are required for those USYers under 17. Look for your permission slips along with the January flyer or e-mail [blondy0131@aol.com](mailto:blondy0131@aol.com) for one. The date for this event is Sunday, January 8th sometime in the afternoon. The exact time will be determined as the date arrives. Parents are invited to join us for this event, as well.

### January 19th: It's Tie-Dye and DDR (Dance Dance Revolution) Night.

Please bring at least one white t-shirt to tie-dye. We will be donating them for SA/TO. If you would like a shirt for yourself or a friend, you must provide them as well. When you are not tie-dying a shirt, you can practice your dance moves with the popular video game. This event is at the synagogue from 7:30-9 pm. It's going to be a lot of fun.

If you would like more information about USY or you would like to join, please e-mail [themer100@verizon.net](mailto:themer100@verizon.net). New members are always welcome. Don't miss out on our great events.

I hope to see everyone at our January events!

Meryl Surks  
Communications VP '05-'06

### COLLEGE RESEARCH CONSULTANTS

SPECIALIZING IN COLLEGE ADMISSIONS

- \* SELECT THE RIGHT COLLEGE
- \* SECURE FINANCIAL AID
- \* PREPARE COLLEGE APPLICATIONS
- \* LEARN INTERVIEW TECHNIQUES

DAVID MASON, Ed.M.

1398 AXEL AVENUE  
NORTH BRUNSWICK, NJ 08902  
PHONE / FAX (732) 247-1543  
[dmasoncrc@hotmail.com](mailto:dmasoncrc@hotmail.com)

# B'NAI TIKVAH COMMUNITY

## Sisterhood

### Sisterhood Mitzvah Projects Rock

The Sisterhood continues its mission to support projects that make a difference to our local, national, and worldwide communities. Members showed their holiday spirit of giving at the Membership Dinner meeting by bringing wrapping paper, tissue paper and gift bags for the Ronald McDonald House.

In a thank you letter House Manager Kathleen Dennis wrote that during the meeting she was "so overwhelmed by all the items...collected....Your donation supports the families of seriously ill children at our facility....It is only through the kindness of people like you that the 'House that Love Built' continues to grow."



RONALD MCDONALD HOUSE CHARITIES

### More Thanks from A Very Important Cause

Princeton YMCA Breast Cancer Resource Center (BCRC) Director Kara Stephenson addressed the Sisterhood at a meeting devoted to increasing awareness of the disease and the importance of early detection and treatment. She thanked the group for the invitation to present this information and acknowledged that "Support such as yours ensures that BCRC can continue to provide [information and emotional support] and reach out to those most in need."

### Heartwarming Response to the Displaced Children of New Orleans

Congregation members responded to the Sisterhood's outreach to displaced students from New Orleans with an overwhelming amount of school supplies. We sent out an amazing 42 lbs. of supplies for distribution to schools in Houston for children who lost their homes.

And, we sent a birthday card and gift to our adopted Israeli family's daughter Dikla.

### Sunday, January 22, 2006: Crafts Program 10:00 AM

Join us for a bagel and lox breakfast and a creative craft session when we will be making women's wire and bead head coverings. To ensure that we have enough supplies please RSVP as soon as possible. The **deadline is January 15:**

Phyllis Safeer

732-432-9622

safeer@comcast.net

For that meeting we ask you again to show your generosity by collecting new or "like new" hats, scarves, and gloves for Elijah's Promise.

### Rosh Chodesh Study Group

The next Sisterhood sponsored Rosh Chodesh Study Group meets Tuesday, February 28, 2006 at 7:30pm.

This class will concentrate on studying Women of the Bible. Participants will have an opportunity to select, prior to the class, a particular Biblical Woman to do an in-depth study and analysis of, and then present to the class. The Rabbi will be available to provide resource material as well as any assistance you may need.

Please choose from the following list of Biblical Women. Consider selecting one with whom you may be less familiar.

|         |           |         |
|---------|-----------|---------|
| Eve     | Sarah     | Deborah |
| Rebecca | Rachel    | Ruth    |
| Leah    | Dina      | Naomi   |
| Tamar   | Miriam    | Esther* |
| Abigail | Batshebah | Hannah  |
| Batya   | Yocheved  | Michal  |
| Vashti* | Yael      | Rachav  |

Everyone is welcome. It is not necessary to have attended the first class. RSVP's appreciated, call Lynn at 732-297-6691

\*Good choices as Purim is two weeks after this class meeting.



By Appointment

**DR. STEVEN B. DICKERT**

**CHIROPRACTOR**

58 Wetherhill Way  
(Corner Georges Road)  
Dayton, N.J. 08810  
(732) 329-2255

176 Hart Boulevard  
(Corner Forest Avenue)  
Staten Island, N.Y. 10301  
(718) 981-4900

### SPECIALIZING IN WATER HEATERS

INSTALLATION & REPAIRS  
NEW CERAMIC TILE  
DRAIN CLEANING  
SUMP PUMPS

KITCHENS & BATHS  
GARBAGE DISPOSALS  
APPLIANCE HOOK-UPS

**PARK ACRES  
PLUMBING & HEATING**

KENDALL PARK

732 297-7538

Harold Small Lic. #5648

Owner will personally come to your home or business  
-Over 40 years experience-

We recommend Bradford White Water Heaters

BRADFORD WHITE

# CASINO NIGHT

## *Is Coming!*

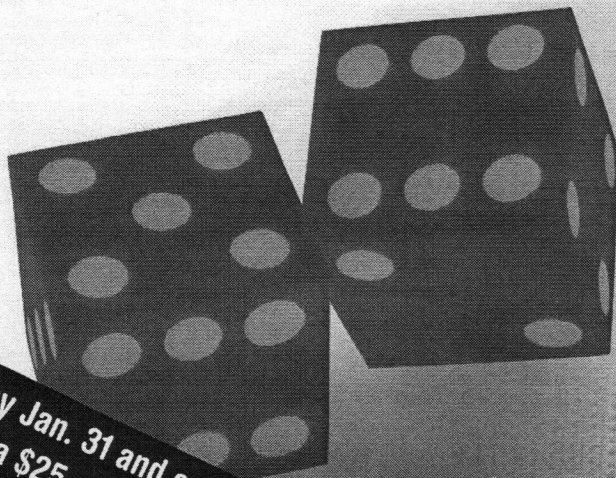
Watch for your official invitation arriving in January to a night of gambling, dining and entertainment.

for More Info Please Call:

Gary Warner - (732) 422-9292

Allison Nagelberg (732) 846-1464

Mark Sherman (732) 940-1110

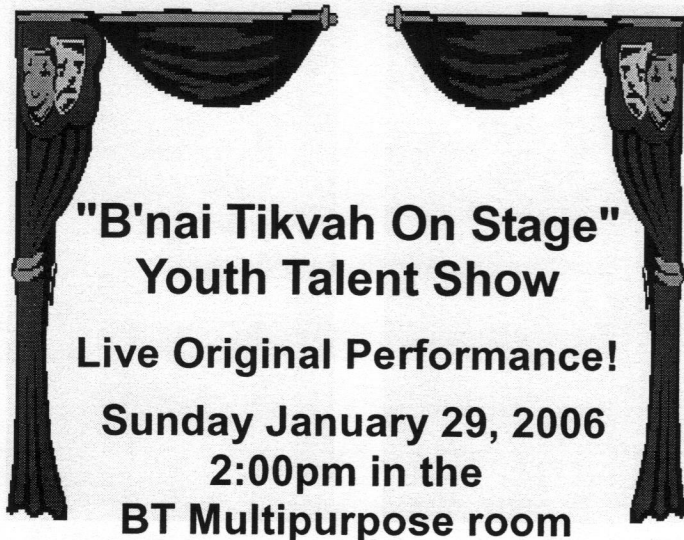


**WE STILL NEED PRIZES  
AND VOLUNTEERS!**

**A night not to be missed!**

**RSVP by Jan. 31 and earn  
an extra \$25 gambling  
voucher!**

# B'NAI TIKVAH COMMUNITY



**"B'nai Tikvah On Stage"  
Youth Talent Show**

**Live Original Performance!**

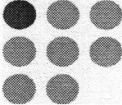
**Sunday January 29, 2006  
2:00pm in the  
BT Multipurpose room**

**Ticket Sales will begin January 8th.  
They can be purchased in the  
Synagogue Office, Religious School Office  
and Sunday Mornings**

Adults \$5.00 (\$6.00 at the door) Children/students  
(under 18) \$3.00 (\$4.00 at the door) For information and  
tickets, contact [Activities@BnaiTikvah.org](mailto:Activities@BnaiTikvah.org)

**ARE YOU TAKING ADVANTAGE OF ALL  
THE TAX SAVINGS AVAILABLE  
UNDER THE NEW TAX LAWS?**

**MATRIX FINANCIAL ADVISORS LLC**  
Comprehensive Tax Services for Individuals and Families  
•Tax Planning •Tax Preparation •Tax Audit Support



**Jeff Haveson CPA**  
Member AICPA and NJSSCPA  
30 Jefferson Plaza  
Princeton, NJ 08540  
By Appointment 732-329-2230



**MUSIC LESSONS**  
*By Marty Angstreich*

Now offering private instruction in:

**Voice  
Piano / Keyboard  
Composition / Arranging**




732-735-5642      [martyangstreich@aol.com](mailto:martyangstreich@aol.com)

## Looking for a Few Good Men- or Women


*The Sons of Tikvah* – Congregation B'nai Tikvah's "Jewish Dance Band in Residence" - currently has several openings for experienced musicians.

We are actively looking for a Bassist (electric preferred), Saxophonist (Tenor Sax, doubling on clarinet) and/or a Clarinetist. For those of you who don't know who we are, **The Sons** is a group of ten temple members who really enjoy getting together to play Hebrew, Jewish, and Yiddish music. We rehearse most Tuesday nights at the synagogue, and our band arrangements are written by your fellow band members. We have also been working diligently on producing our first CD!

So, if you are an experienced musician, with strong reading and performing skills, and a desire to have **fun**, then please email me at [Marty.Angstreich@BnaiTikvah.org](mailto:Marty.Angstreich@BnaiTikvah.org) to arrange to meet with the band.

We have several gigs coming up in the near future including *Shabbat Shira* and the *Raise Our Voices* concert at Anshe Emeth, so if you are interested, now would be a good time to log on and drop me an email. We are looking forward to adding some new faces and sounds to our very talented group!

*Thanks . . . Marty Angstreich, Music Director*



**Custom Eyes**      **Wayne Gonchar**  
Optician

**Eyewear is a great accessory...  
It can change your appearance...  
Your personality!**

**Come visit us!**

**HOURS: Mon., Tues., Wed., Fri: 10-6  
Thurs: 10-7:00 Call for Weekend Hours**

**647M Rt. 18 • East Brunswick**  
(A & P Shopping Center & Arthur Street)  
**732-613-EYES (3937)**

# B'NAI TIKVAH COMMUNITY

## SOCIAL ACTION

### Donate Your Old Cell Phone To Help

**Battered Women:** Do you have an old cell phone you don't know what to do with? Let Social Action take it off your hands! Bring your old cell phone with its battery and charger to the synagogue office. Social Action will be donating these phones to women from Women Aware, a shelter for battered women. All donated phones must have a battery and a charger. This program is ongoing.

**Ongoing... Mitzvah Crib:** We continue to welcome donations of new baby items such as diapers, wipes, bottles, toys and clothes which will be distributed to needy families in the area.

**Thank You** to Rachel Shaneson and the congregants who one Sunday morning made it possible for area needy people to get free Thanksgiving turkeys from area supermarkets through the purchase of scrip. Three hundred dollars in scrip was purchased toward this effort.

**Calling All Kids!** We're planning a visit to a Somerset nursing home on a Sunday afternoon in February for Bingo and possibly for showing off our CBT talent. All you talent show kids can do a repeat performance for a very appreciative crowd! Please contact Laura Waksman at [socialaction@bnaitikvah.org](mailto:socialaction@bnaitikvah.org).

## Scholarship for Summer '06 Jewish Volunteer and Leadership Program

The Jewish Federation of Greater Middlesex County is proud to announce a scholarship from the Senator Laurence S. and Edith G. Weiss Foundation Jewish Activism Endowment: A Program to Create, Educate and Motivate Young Jewish Leaders.

The scholarship is:

- For attendance in Panim - The Institute for Jewish Leadership and Values that hosts a Summer JAM (Judaism, Activism and Mitzvah) program (value \$3,985)
- Given to one Greater Middlesex County student entering grades 10 - 12 in the fall of 2006
- The four week program includes room and board, kosher meals, travel, field trips and entertainment, and takes place in Washington, D.C. from June 26 to July 23, 2006.

Participants will:

- Have the opportunity to interact with a wide range of people: homeless residents, activists and advocates, members of Congress and Jewish leaders
- Be able to perform direct services with organizations that tackle some of society's most challenging issues
- Live on the campus of George Washington University, and learn and serve with Jewish teens from across the country with a wide variety of denominational backgrounds
- Study Jewish texts and values, and gain advocacy training from leading experts on domestic and international policy issues.

The scholarship is in honor of Laurence Weiss, who died in 2003 and was a New Jersey State Senator from Woodbridge from 1977 to 1991. The deadline for applying is January 15, 2006. For more information, and to receive an application contact:

Jeff Scheckner  
Jewish Community Relations Council Director  
Jewish Federation of Greater Middlesex County  
[Jscheckner@jf-gmc.org](mailto:Jscheckner@jf-gmc.org) 732-432-7711

### Needy Family Program A Success!

On behalf of the Social Action Committee, I would like to thank everyone who participated in our endeavor to support families in need during the holiday season. Because of your good efforts, eight families are now approaching the New Year with many of the basic resources most of us take for granted—sheets, blankets, towels, clothing, winter coats, sneakers and boots.

*Thanks for your kindness and generosity!*  
Janice Baer

### Social Action Food of the Month: Items to be distributed to local food pantries

**January:**  
Cereal and Parmalat

**February:**  
Juice Boxes, Snacks for Lunches, Canned Fruit

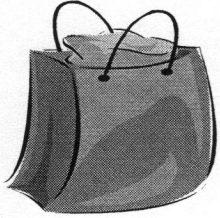


The Martin & Edith Stein Assisted Living Residence

**Toby B. Ehrlich, LCSW, ACSW**  
Director of Marketing

350 DeMott Lane, Somerset, NJ 08873  
Toll Free: 800-574-5760 ■ T: 732-568-1155 ■ F: 732-568-0055  
Email: [tehrlich@steinresidence.org](mailto:tehrlich@steinresidence.org) ■ [www.steinresidence.org](http://www.steinresidence.org)

## B'NAI TIKVAH COMMUNITY



### The Sisterhood Judaica Gift Shop

It's always a holiday at Sisterhood's Judaica shop. We have a very large collection of ritual items as well as presents for engagement, wedding, b'nai mitzvot, new baby and much more. Kippot and tallit available in-shop and special orders. Don't waste your time shopping around - we have the best prices!

**New Judaica Gift Shop Hours:** The gift shop has expanded its hours to better accommodate your busy schedules.

**Tuesday 4 to 6**  
**Wednesday 9 to 12 and 4 to 6**  
**Friday 9 to 12**  
**Sunday 9 to 12**

## 50plus

### Next Meeting Tuesday, January 24th

The Fifty Plus Group will meet on Tuesday, January 24, at 1 P.M. in the Social Hall of the Synagogue. Back by popular demand, we will enjoy a full-length movie and pizza. Warm up with hot coffee or tea on a cold afternoon. We are pleased to welcome a special new member, MITCH FRUMKIN. Our membership is open to all Congregation members over the age of 50, as well as non-congregation Jewish friends. So plan on joining us, and bring a friend.

## Solutions to Your Financial Needs

No matter what your future plans entail, Guardian can help you reach your financial goals. Make an intelligent choice.

Contact our office today!

\*Long Term Care Insurance is not underwritten by Guardian.

Registered Representative of Park Avenue Securities LLC (PAS), 7 Hanover Square, New York, NY 10004. Securities products and services offered through PAS, 1-888-600-4667. PAS is an indirect, wholly owned subsidiary of Guardian.

PAS, member NASD, SIPC.

Disability income products underwritten and issued by Berkshire Life Insurance Company of America, Pittsfields, MA, a wholly owned stock subsidiary of Guardian. Products not available in all states. Product provisions and features vary from state to state.

LIFE INSURANCE  
DISABILITY INCOME INSURANCE  
RETIREMENT SERVICES  
EMPLOYEE BENEFITS  
INVESTMENTS  
LONG TERM CARE\*

For more information contact:

Keith Zimmerman  
Agency Supervisor  
609.452.8088



**GUARDIAN**<sup>SM</sup>

The Guardian Life Insurance Company of America  
New York, NY (Guardian)



# B'NAI TIKVAH COMMUNITY

## JCC ACTIVITIES

### JAZZERCISE

**"Work off the Latkes & Donuts, Join An Exercise Group"**

Try a FREE Members' Only Class

Tuesday, Jan. 17 at 4:30 PM in the gym.

Members Only Class begins Jan. 24 (8 week session)

Try a FREE Class Open to All, Wed. Jan. 4 at 9:30 am

Regular Classes begin Jan. 6, every Mon., Wed. & Fri. from

9:30-10:30am in the gym. Bring your friends.

See the JCC Winter Brochure or go to

www.southnorthbrunswickjazz.org for Registration and Fees,

or Call Certified Jazzercise Instructor: Chris Bastedo: 609-

275-8000. Additional course description information can also

be found at www.bnaitikvah.org

### YOGA

Members' Only Class begins Wed. Jan. 4 (8 week session)  
from 5-6 PM in the gym. \$65 for members

Classes OPEN TO ALL – Begins Thursdays, Jan. 5 (8 week  
session)

Mommy & Baby – 10-11:00 AM in the gym

Adult Class – 11-12:00 PM in the gym

All classes taught by Certified Yoga Instructor, Jul McCormick  
Members \$65, Non-Members \$75 per 8 week session

For course descriptions; go to www.bnaitikvah.org or see the

JCC Winter Brochure. Yoga Checks made payable to: Con-

gregation B'nai Tikvah, send to Attn: Lisa Mason, Program-

ming Director

## "Raise Our Voices" Concert to Take Place February 26

The tradition continues...

An unforgettable day of Jewish spirit, song and music takes place at the 4th annual "Raise Our Voices For Israel" concert on Sunday, February 26, 2006 at Anshe Emeth Memorial Temple in New Brunswick. There will be two performances at 2:00 PM and 6:00 PM in this newly renovated, historic synagogue. More than twenty groups including synagogue choirs, cantors, instrumental ensembles and soloists will perform. The Jewish Community Relations Council of the Jewish Federation of Greater Middlesex County, our host synagogue Anshe Emeth, all synagogues and Jewish agencies in greater Middlesex County are co-sponsoring this event. All funds raised at this event benefit Operation Promise which helps in settling Ethiopians and other immigrants in Israel. Ticket information and additional details will be available in January. For more information, please contact:

Jeff Scheckner

Jewish Community Relations Director

Jewish Federation of Greater Middlesex County

230 Old Bridge Turnpike South River, NJ 08882

phone: (732) 432-7711 ext. 15 fax: (732) 432-0292

jscheckner@jf-gmc.org

www.JewishMiddlesex.org

Live Generously.

## ADVERTISE IN HAKOL

HaKol advertising is one of the most cost-efficient ways to reach your local Jewish community. Your ad reaches over 400 Jewish households each issue, and Hakol advertisers get free hyperlinks at [www.bnaitikvah.org](http://www.bnaitikvah.org). Hakol is published 10 times a year, monthly except for July & August.

Contact Tammy Zimmerman at  
[Tammy.Zimmerman@bnaitikvah.org](mailto:Tammy.Zimmerman@bnaitikvah.org)  
or 732-398-1420.

*"Providing Relief,  
Restoring Function"*



3228 Route 27  
Kendall Park, NJ 08824  
Phone: 732-297-0032  
Fax: 732-297-0558  
Email: [info@jerseypt.com](mailto:info@jerseypt.com)

Eleven Eleven  
PHOTOGRAPHY, LLC

*Sharon DeLimaverde*  
Photographer

tel: 732-397-1538  
[www.1111photo.com](http://www.1111photo.com)  
[sdelimaverde@comcast.net](mailto:sdelimaverde@comcast.net)

## RARITAN AIR WATER POWER SERVICE

*We're At Your Neighbor's House, Are We at Yours?*

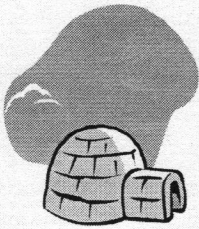
### **AIR**




Central heating and cooling  
Service contracts  
Carbon monoxide testing  
High efficiency replacements  
Humidifiers  
Hot water heat  
Programmable thermostats  
High efficiency air cleaners

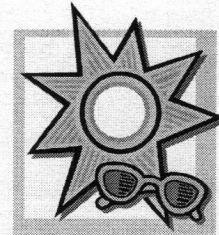
**Unknown Dangers  
are in Your  
Home and Office.  
Ask Us Why!!!**

### **WATER**

Drain cleaning  
Hot water heaters  
New fixtures  
Clothes washer cut-off valves  
Toilets  
Sinks  
Garbage disposals  
Gas hook-ups  
Water purification



**POWER**  
Lighting  
Outlets  
Timers  
Ceiling fans  
Attic fans  
Smoke Detectors  
  



## **WHAT YOU DON'T KNOW, CAN HARM YOU!**

Carbon monoxide can kill you – and your detector may be useless. Ask us why.


Your properly maintained central humidifier can prevent colds. Is yours working?

Is your furnace in your laundry room? This may be a fire hazard.  
When was the last time you had your furnace checked?

Is your office heat working? Uncomfortable working conditions  
inhibit productivity. Ask us how we can help.

Seasonal maintenance allows you to save money, avoid service delays, and  
extend the life of your home and office heating systems. Ask us why.

**CALL NOW TO SCHEDULE YOUR CRITICAL  
HEAT AND CARBON MONOXIDE DETECTION CHECKS.**

 1-877-501-COOL (2665) 

*"Pick up the phone to protect your home"*

## B'NAI TIKVAH COMMUNITY

### A RESOLUTION FOR 2006

Happy 2006! With January we get a new secular year. We also get snow, ice, shoveling, etc...everything for the snow bunnies. For others, like me, sunshine and balmy weather conjure up cozier thoughts of snowbirds.

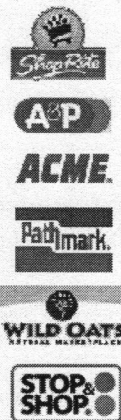
Not all of us are able to pack it in for the winter months to become snowbirds and we should not host a pity party as a result. After all, there those who are less fortunate than the snowbird wannabes. These are the men/women/children who do not have permanent homes and/or have difficulties feeding their families. Want to help? Make a New Year's resolution, do a mitzvah

and make a donation to Congregation B'nai Tikvah all at the same time.

This leads up to *this month's tip*.

Resolve to purchase scrip each month for your own use and add a bit extra, based upon your financial ability. Purchase scrip by visiting the scrip committee's table during Sunday morning religious school hours, going on line at [www.bnaitikvah.org](http://www.bnaitikvah.org) (order form and credit card form available, too), contacting the synagogue office during business hours, contacting the committee chairperson at [Rachel.Shaneson@bnaitikvah.org](mailto:Rachel.Shaneson@bnaitikvah.org). So when you do purchase that extra scrip for A&P, Acme, Pathmark, Shop Rite, Stop & Shop, and Wild Oats why not donate it to your local food pantry? You might buy actual non perishable food items with the scrip, or better yet, donate the scrip itself to the pantry and let them decide what to purchase with this donation. Before deciding which option to use, it may be advisable to contact the food pantry office to ask their preference. In the end these food pantries will be very appreciative of your efforts. As I always say: **YOU GOTTA EAT ANYWAY!**

Linda Feinstein



### OUR NEW ADDITION IS OPEN FOR BUSINESS!

- The multi-purpose room/gymnasium is ideal to celebrate life-cycle events such as a birthday basketball party, Sweet 16, anniversary, or baby-naming event etc.
- The classrooms seat between 16-24 people and are available to rent as well.
- The classrooms make an ideal venue for support type groups. If you or somebody you know has a support group but no place to hold their meetings, please contact the Programming Director. Think outside the box: AA, Driver Safety course, tutoring clubs, family therapy groups, bereavement groups etc. While many of these types of organizations have already been contacted, knowing an actual group or person in need of space is crucial. Reasonable rates are available to support groups.
- Your Skills and Ideas Are Appreciated. Member Rental Rates are Available. Contact: Lisa Mason, Programming Director at 732-297-0696 or E-Mail: [Programming@bnaitikvah.org](mailto:Programming@bnaitikvah.org)

# jazzercise®

## OPEN HOUSE

**Come try a FREE class at one of the Open House dates below...and if you register after class, pay only \$20 for January when you register for our Easy Fitness Ticket**

#### Open House

JAN. 4, 2006—9:30 AM\*  
JAN. 17, 2006—4:30 PM\*\*

JCC OF NORTH/SOUTH  
BRUNSWICK  
1001 FINNEGANS LANE  
NORTH BRUNSWICK

\*Babysitting available for AM class  
\*\* 4:30 class for JCC Members only

#### Open House

JAN 3, 2006—7 PM

SOUTH BRUNSWICK  
MUNICIPAL COMPLEX  
ROUTE 522  
SOUTH BRUNSWICK

For more information and class schedule:  
[www.southnorthbrunswickjazz.com](http://www.southnorthbrunswickjazz.com)  
Christine Bastedo, Certified Jazzercise Instructor/Owner  
(609) 275-8000 [CLBastedo@aol.com](mailto:CLBastedo@aol.com)

# CONTRIBUTIONS November 16 through December 15, 2005

**Yartzeit:**

Barbara and Joe Plotnick, in memory of Carl Plotnick  
 The Spiger Family, in memory of Raymond Kane  
 Helen Segal, in memory of her mother, Celia Steinberg  
 Roberta bilker, in memory of her mother, Jean Rubin  
 Gloria and Fred Landsman, in memory of Molly Landsman  
 Elaine Buechler  
 Marci and Marty Abschutz, in memory of Yvette Abschutz  
 Helene and Gary Tinkel, in memory of Harold Reimer  
 Abbey and Bernard Lorber, in memory of Charles Lorber  
 Joyce and Joel Gerbman, in memory of George Weinstein  
 Shirley Eberle, in memory of Al and Betty Jones  
 Milton Kabakoff, in memory of David Kabakoff  
 Gladys and Sidney Kalman, in memory of David Kalman  
 Irina and Solomon Dinkevich, in memory of Etta Hillel

**Rabbi's Discretionary Fund:**  
 Mae Rubinstein, in memory of Mili Rosloff  
 Barbara and Harvey Abramson  
 Alan Brown, in memory of his father, Charles Brown

**Cantor's Discretionary Fund:**  
 Vicki and Burt Bauman, in memory of Vicki's dad, Harry Manheim  
 Jay Scheuer, thanking the Cantor for the donation of old Siddurim to Congregation Beit-El  
 Cindy and Neal Gittleman, in memory of

Michael Solomon  
 Joel and Marian Felderbaum, in honor of the first birthday of Michael Lior, Arlene and Arthur Cederbaum's grandson

**Expansion Fund:**  
 Adrienne and Andy Ross, in memory of Anita Roller

**Youth Fund:**  
 Ellyn and Harold Schneider, in memory of Anita Roller  
 Adrienne and Andy Ross, in honor of the Bat Mitzvah of Leah Runyon  
 Adrienne and Andy Ross, in honor of Susan and Jon Kleinman becoming grandparents  
 Susan and Harry Rosenzweig, in honor of Mr. and Mrs. Marcus becoming grandparents

**Israeli Youth Exchange Fund:**  
**Suse Rosenstock Memorial Fund:**  
**Leon Bible Fund:**  
**Passport to Israel Fund:**  
 Marci and Marty Abschutz, in memory of Charles Brown (father of Alan Brown)

**Prayer Book Fund:**  
 The Fifty Plus Group, in memory of Anita Roller  
 The Spigner family, in memory of Anita Roller  
 Elaine and Alvin Brackup, in memory of Anna and Isidore Rubin

**Family Shabbat Fund:**  
**Makhela Fund:**  
**Sons of Tikvah Fund:**  
 Barbara and Joe Plotnick, in honor of the birth of Conner Lawson  
 Barbara and Joe Plotnick, in memory of Anita Roller

**School Fund:**  
 Diane and Herbert Goldstein, in memory of Sylvia Halpern

Roz Fischman, in honor of Carol Winter for her celebrating 20 years of teaching at B'nai Tikvah  
 Lisa and Richard Seidman and family, in honor of Ann Kanarek for her walking away from a car accident  
 Lisa and Richard Seidman and family, in honor of Ellie and Bill Greenberg becoming grandparents  
 Dinah, Gary, Josh and Greg Harmon, in appreciation of the years Carol Winter have dedicated in teaching their children  
 Dinah, Gary, Josh and Greg Harmon, in honor of the Bat Mitzvah of Brittany Altman

**Nursery School Fund:**  
**Ritual Fund:**  
**Library Fund:**  
**Torah Restoration Fund:**  
 Bobbi and Marc Binder, in memory of Elaine Cohn

**Tzedakah Fund:**  
 Joyce and Leonard Mandelblatt, in memory of David I. Mandelblatt

**Social Action Fund:**  
 Mae Rubinstein, in memory of Anita Roller

**Men's Club:**  
**General Fund:**  
 Marlene and Eugene Rautenberg, in honor of Fern and Steve Korn  
 Marci and Marty Abschutz, in memory of Anita Roller  
 Bette and Marvin Stark, in memory of Anita Roller

**Trivia Question Answer:**  
 In 1800 Charleston, SC was the largest Jewish community in the United States.  
 Source: www.kkbe.org

SINCE 1934  
 FAITHFULLY SERVING THE PUBLIC

*Gabowitz TV & Appliance Co.*  
 272 RT. 18 (NORTH), EAST BRUNSWICK, NJ 08816

KENNETH KOHN  
 PRESIDENT

TEL 732-257-7846  
 FAX 732-257-5129



**ERA Absolute Realty**  
 1600 Jersey Avenue  
 North Brunswick, NJ 08902

Office: (732) 220-6611 x46  
 Cell: (908) 208-3976  
 Fax: (732) 220-1451  
 PaulaKondioti@AbsoluteERA.com  
 www.PaulaKondioti.HomesOFNJ.com



Paula Kondioti  
 REALTOR-ASSOCIATE®

Each ERA® Office is Independently Owned and Operated

# B'NAI TIKVAH DIRECTORY

| TITLE                         | NAME                | PHONE #       | E-MAIL ADDRESS                   |
|-------------------------------|---------------------|---------------|----------------------------------|
| Rabbi                         | David Eligberg      | 732-940-1973  | Rabbi@bnaitikvah.org             |
| Cantor                        | Bruce Rockman       | 732-422-0963  | Cantor@bnaitikvah.org            |
| President                     | Daniel Greenberg    | 732-297-3780  | President@bnaitikvah.org         |
| VP Activities                 | Cindy Gittleman     | 732-274-2253  | Activities@bnaitikvah.org        |
| VP Administration             | Gary Bergman        | 732-246-7285  | Administration@bnaitikvah.org    |
| VP Membership                 | Ruth Anne Koenick   | 732-828-8141  | Membership@bnaitikvah.org        |
| VP School and Youth           | Jeff Cadoff         | 732-398-3769  | Jeff.Cadoff@bnaitikvah.org       |
| VP Ways & Means               | Mark Sherman        | 732-940-1110  | Mark.Sherman@bnaitikvah.org      |
| Recording Secretary           | Bobbi Binder        | 732-274-2797  | Secretary@bnaitikvah.org         |
| Financial Secretary           | Mark Kasdin         | 732-274-2897  | Mark.Kasdin@bnaitikvah.org       |
| Treasurer                     | Marc Dillman        | 732-821-7392  | Treasurer@bnaitikvah.org         |
| Asst. Treasurer               | Frank Waltzer       | 732-329-9580  | Frank.Waltzer@bnaitikvah.org     |
| Past President                | Arie Behar          | 732-422-1495  | PastPresident@bnaitikvah.org     |
| <b>TRUSTEES</b>               | Art Biderman        | 732-297-6691  | Art.Biderman@bnaitikvah.org      |
|                               | Larry Cohen         | 732-821-4376  | Larry.Cohen@bnaitikvah.org       |
|                               | Mitchell Frumkin    | 732-297-5069  | Mitchell.Frumkin@bnaitikvah.org  |
|                               | Al Garten           | 732-297-4595  | Al.Garten@bnaitikvah.org         |
|                               | Mark Jiorle         | 732-803-6299  | Mark.Jiorle@bnaitikvah.org       |
|                               | Jerry Kaminsky      | 732-297-3766  | Jerry.Kaminsky@bnaitikvah.org    |
|                               | Linda Kohn          | 732-822-2488  | Linda.Kohn@bnaitikvah.org        |
|                               | Allison Nagelberg   | 732 846-1464  | Allison.Nagelberg@bnaitikvah.org |
|                               | Dave Spivak         | 732-329-2145  | Dave.Spivak@bnaitikvah.org       |
|                               | Gary Warner         | 732-422-9292  | Gary.Warner@bnaitikvah.org       |
|                               | Paul Zankel         | 732-254-6465  | Paul.Zankel@bnaitikvah.org       |
| <b>VOTING</b>                 | Doris Sandrowitz    | 609-860-1498  | FiftyPlus@bnaitikvah.org         |
| Fifty Plus                    | Al Garten           | 732-297-4595  | Al.Garten@bnaitikvah.org         |
| Men's Club                    | Joyce Gerbman       | 732-937-5114  | Sisterhood@bnaitikvah.org        |
| Sisterhood                    |                     |               |                                  |
| Administrative Director       | Nitsat Hadas Elami  | 732-297-0696  | Admin@bnaitikvah.org             |
| Administrative Assistant      | Roz Fischman        | 732-297-0696  | Office@bnaitikvah.org            |
| Assistant to the Clergy       | Michelle Green      | 732-297-0696  | Michelle@bnaitikvah.org          |
| Programming Director          | Lisa Mason          | 732-297-0696  | Programming@bnaitikvah.org       |
| Synagogue FAX                 |                     | 732-297-2673  |                                  |
| B'nai Mitzvah Mentors         | Cindy Gittleman     | 732-274-2253  | Mentors@bnaitikvah.org           |
| Cemetery                      | Bette Koffler       | 732-329-6518  | Cemetery@bnaitikvah.org          |
| College Committee             | Marcia Schwartz     | 732-297-6365  | College@bnaitikvah.org           |
| Couples Club                  | Nadine Weg          | 732-329-1359  |                                  |
| Feedback Committee            | Mitchell Frumkin    | 732-297-5069  | Feedback@bnaitikvah.org          |
| Fifty Plus Group              | Doris Sandrowitz    | 609-860-1498  | FiftyPlus@bnaitikvah.org         |
| Hakol Editors                 | Paul & Nancy Zankel | 732-254-6465  | Hakol@bnaitikvah.org             |
| Hakol Advertising             | Tammy Zimmerman     | 732-398-1420  | Tammy.Zimmerman@bnaitikvah.org   |
| Israel Bonds                  | Larry Cohen         | 732-821-4376  | Bonds@bnaitikvah.org             |
| Israel Taskforce              | Alan Kane           | 732-418-1913  | Alan.Kane@bnaitikvah.org         |
| Judiaca/Gift Shop             | Deborah Spigner     | 732-545-8457  | Giftshop@bnaitikvah.org          |
| Junior Congregation           | Barry Safer         | 732-432-9622  | JC@bnaitikvah.org                |
| Kadima                        | Rachel Sakofs       | 732-317-4038  | Kadima@bnaitikvah.org            |
| Makelah                       | Cheryl Asnis        | 732-297-5379  | Makelah@bnaitikvah.org           |
| Men's Club Co-Presidents      | Steve Katz/Ed Birch | 732-821-6201  | MensClub@bnaitikvah.org          |
| New Beginnings                | Jeanette Bergelson  | 732-246-1393  | NewBeginnings@bnaitikvah.org     |
| Nursery School Director       | Phyllis Denenberg   | 732-297-0295  | Nursery@bnaitikvah.org           |
| Passport to Israel Program    | Keith Zimmerman     | 732-398-1420  | Passport@bnaitikvah.org          |
| Programs                      | Cindy Gittleman     | 732-274-2253  | Activities@bnaitikvah.org        |
| Publicity                     | Bette Koffler       | 732-329-6518  | Publicity@bnaitikvah.org         |
| Religious School Comm. Chairs | Kim Reimann         | 732-940-4066  | Kim.Reimann@bnaitikvah.org       |
|                               | Lisa Seidman        | 732-297-6950  | Lisa.Seidman@bnaitikvah.org      |
| Religious School Principal    | Ann Kanarek         | 732-297-0295  | School@bnaitikvah.org            |
| Ritual/Religious Activities   | Bobbi Binder        | 732-274-2797  | Ritual@bnaitikvah.org            |
| Sisterhood President          | Lynn Biderman       | 732-297-6691  | Sisterhood@bnaitikvah.org        |
| Scrip Committee Chair         | Rachel Shaneson     | 732-329-2189  | Scrip@bnaitikvah.org             |
| Social Action Comm. Chair     | Laura Waksman       | 732- 698-2494 | SocialAction@bnaitikvah.org      |
| USY                           | Audra Lifson        | 732-821-1784  | USY@bnaitikvah.org               |
| Webmaster                     | Gary Bergman        | 732-246-7285  | Webmaster@bnaitikvah.org         |
| Yahrzeit Plaques              | Nitsat Hadas Elami  | 732-297-0696  | Admin@bnaitikvah.org             |
| Youth Committee               | Adrienne Ross       | 732-422-0637  | YouthActivities@bnaitikvah.org   |

Keep our directory up to date. Updates and changes: e-mail Hakol@bnaitikvah.org, or call the editors at 732-254-6465

# JANUARY 2006

1 Tevet

2 Sh'vat

| Sun                                                                  | Mon                                                                        | Tue                                                                     | Wed                                                                                                                                                                                                                                                                                                                                                                                                                                                                                                                                                                                                                          | Thu                               | Fri                                          | Sat                                                                         |  |  |  |  |  |   |   |   |   |   |   |   |  |  |  |  |   |   |   |   |   |   |   |   |   |    |    |    |    |    |    |    |    |    |    |    |    |    |    |    |    |    |    |    |    |    |    |                                                                                                                    |                                                                                                                                                                                                                                                                                                                                                                                                                                                                                                                                                                                                                        |          |  |  |  |  |  |  |   |   |   |   |   |   |   |  |  |  |  |   |   |   |   |   |   |   |   |   |    |    |    |    |    |    |    |    |    |    |    |    |    |    |    |    |    |    |    |  |  |  |
|----------------------------------------------------------------------|----------------------------------------------------------------------------|-------------------------------------------------------------------------|------------------------------------------------------------------------------------------------------------------------------------------------------------------------------------------------------------------------------------------------------------------------------------------------------------------------------------------------------------------------------------------------------------------------------------------------------------------------------------------------------------------------------------------------------------------------------------------------------------------------------|-----------------------------------|----------------------------------------------|-----------------------------------------------------------------------------|--|--|--|--|--|---|---|---|---|---|---|---|--|--|--|--|---|---|---|---|---|---|---|---|---|----|----|----|----|----|----|----|----|----|----|----|----|----|----|----|----|----|----|----|----|----|----|--------------------------------------------------------------------------------------------------------------------|------------------------------------------------------------------------------------------------------------------------------------------------------------------------------------------------------------------------------------------------------------------------------------------------------------------------------------------------------------------------------------------------------------------------------------------------------------------------------------------------------------------------------------------------------------------------------------------------------------------------|----------|--|--|--|--|--|--|---|---|---|---|---|---|---|--|--|--|--|---|---|---|---|---|---|---|---|---|----|----|----|----|----|----|----|----|----|----|----|----|----|----|----|----|----|----|----|--|--|--|
| 1<br>1 Tevet<br><br>NEW YEAR'S DAY<br>HANUKAH<br>ROSH CHODESH        | 2<br>2 Tevet<br><br>Office & Schools Closed<br>HANUKAH                     | 3<br>3 Tevet<br><br>Schools Resume<br>USY Meeting<br>Board of Directors | 4<br>4 Tevet                                                                                                                                                                                                                                                                                                                                                                                                                                                                                                                                                                                                                 | 5<br>5 Tevet                      | 6<br>6 Tevet                                 | 7<br>7 Tevet<br><br>Bat Mitzvah:<br>Tamara Rucko                            |  |  |  |  |  |   |   |   |   |   |   |   |  |  |  |  |   |   |   |   |   |   |   |   |   |    |    |    |    |    |    |    |    |    |    |    |    |    |    |    |    |    |    |    |    |    |    |                                                                                                                    |                                                                                                                                                                                                                                                                                                                                                                                                                                                                                                                                                                                                                        |          |  |  |  |  |  |  |   |   |   |   |   |   |   |  |  |  |  |   |   |   |   |   |   |   |   |   |    |    |    |    |    |    |    |    |    |    |    |    |    |    |    |    |    |    |    |  |  |  |
| 8<br>8 Tevet<br><br>BLOOD DRIVE<br>Kindergarten PACT<br>Men's Club   | 9<br>9 Tevet<br><br>Sisterhood Board                                       | 10<br>10 Tevet<br><br>50+ Board Meeting<br>New Beginnings<br>FAST DAY   | 11<br>11 Tevet<br><br>Adult Education:<br>Bible People                                                                                                                                                                                                                                                                                                                                                                                                                                                                                                                                                                       | 12<br>12 Tevet                    | 13<br>13 Tevet<br><br>Birthday Shabbat       | 14<br>14 Tevet<br><br>Bat Mitzvah:<br>Talia Rothfus<br><br>Tot Shabbat      |  |  |  |  |  |   |   |   |   |   |   |   |  |  |  |  |   |   |   |   |   |   |   |   |   |    |    |    |    |    |    |    |    |    |    |    |    |    |    |    |    |    |    |    |    |    |    |                                                                                                                    |                                                                                                                                                                                                                                                                                                                                                                                                                                                                                                                                                                                                                        |          |  |  |  |  |  |  |   |   |   |   |   |   |   |  |  |  |  |   |   |   |   |   |   |   |   |   |    |    |    |    |    |    |    |    |    |    |    |    |    |    |    |    |    |    |    |  |  |  |
| 15<br>15 Tevet<br><br>No Religious School<br>Professional Growth Day | 16<br>16 Tevet<br><br>Office & Schools Closed<br>MARTIN LUTHER<br>KING DAY | 17<br>17 Tevet                                                          | 18<br>18 Tevet<br><br>Adult Education:<br>Bible People                                                                                                                                                                                                                                                                                                                                                                                                                                                                                                                                                                       | 19<br>19 Tevet<br><br>USY Meeting | 20<br>20 Tevet<br><br>Family Shabbat Service | 21<br>21 Tevet<br><br>Bar Mitzvah:<br>Daniel Shapiro<br><br>Synagogue Event |  |  |  |  |  |   |   |   |   |   |   |   |  |  |  |  |   |   |   |   |   |   |   |   |   |    |    |    |    |    |    |    |    |    |    |    |    |    |    |    |    |    |    |    |    |    |    |                                                                                                                    |                                                                                                                                                                                                                                                                                                                                                                                                                                                                                                                                                                                                                        |          |  |  |  |  |  |  |   |   |   |   |   |   |   |  |  |  |  |   |   |   |   |   |   |   |   |   |    |    |    |    |    |    |    |    |    |    |    |    |    |    |    |    |    |    |    |  |  |  |
| 22<br>22 Tevet<br><br>Dalet Class CAFÉ<br>Sisterhood                 | 23<br>23 Tevet<br><br>School Board                                         | 24<br>24 Tevet<br><br>50+ Meeting                                       | 25<br>25 Tevet<br><br>Adult Education:<br>Bible People                                                                                                                                                                                                                                                                                                                                                                                                                                                                                                                                                                       | 26<br>26 Tevet                    | 27<br>27 Tevet                               | 28<br>28 Tevet<br><br>Bar Mitzvah:<br>Corey Garyn<br><br>Bowling League     |  |  |  |  |  |   |   |   |   |   |   |   |  |  |  |  |   |   |   |   |   |   |   |   |   |    |    |    |    |    |    |    |    |    |    |    |    |    |    |    |    |    |    |    |    |    |    |                                                                                                                    |                                                                                                                                                                                                                                                                                                                                                                                                                                                                                                                                                                                                                        |          |  |  |  |  |  |  |   |   |   |   |   |   |   |  |  |  |  |   |   |   |   |   |   |   |   |   |    |    |    |    |    |    |    |    |    |    |    |    |    |    |    |    |    |    |    |  |  |  |
| 29<br>29 Tevet<br><br>Bet Class PACT<br>New Members Meeting          | 30<br>1 Sh'vat<br><br>RAC Meeting<br>ROSH CHODESH                          | 31<br>2 Sh'vat                                                          | <table border="1" style="font-size: small; margin: auto;"> <tr><th colspan="7">DECEMBER</th></tr> <tr><th>S</th><th>M</th><th>T</th><th>W</th><th>T</th><th>F</th><th>S</th></tr> <tr><td></td><td></td><td></td><td></td><td>1</td><td>2</td><td>3</td></tr> <tr><td>4</td><td>5</td><td>6</td><td>7</td><td>8</td><td>9</td><td>10</td></tr> <tr><td>11</td><td>12</td><td>13</td><td>14</td><td>15</td><td>16</td><td>17</td></tr> <tr><td>18</td><td>19</td><td>20</td><td>21</td><td>22</td><td>23</td><td>24</td></tr> <tr><td>25</td><td>26</td><td>27</td><td>28</td><td>29</td><td>30</td><td>31</td></tr> </table> |                                   | DECEMBER                                     |                                                                             |  |  |  |  |  | S | M | T | W | T | F | S |  |  |  |  | 1 | 2 | 3 | 4 | 5 | 6 | 7 | 8 | 9 | 10 | 11 | 12 | 13 | 14 | 15 | 16 | 17 | 18 | 19 | 20 | 21 | 22 | 23 | 24 | 25 | 26 | 27 | 28 | 29 | 30 | 31 | Candle Lighting<br>6 <sup>th</sup> 4:28<br>13 <sup>th</sup> 4:35<br>20 <sup>th</sup> 4:43<br>27 <sup>th</sup> 4:51 | <table border="1" style="font-size: small; margin: auto;"> <tr><th colspan="7">FEBRUARY</th></tr> <tr><th>S</th><th>M</th><th>T</th><th>W</th><th>T</th><th>F</th><th>S</th></tr> <tr><td></td><td></td><td></td><td></td><td>1</td><td>2</td><td>3</td></tr> <tr><td>4</td><td>5</td><td>6</td><td>7</td><td>8</td><td>9</td><td>10</td></tr> <tr><td>11</td><td>12</td><td>13</td><td>14</td><td>15</td><td>16</td><td>17</td></tr> <tr><td>18</td><td>19</td><td>20</td><td>21</td><td>22</td><td>23</td><td>24</td></tr> <tr><td>25</td><td>26</td><td>27</td><td>28</td><td></td><td></td><td></td></tr> </table> | FEBRUARY |  |  |  |  |  |  | S | M | T | W | T | F | S |  |  |  |  | 1 | 2 | 3 | 4 | 5 | 6 | 7 | 8 | 9 | 10 | 11 | 12 | 13 | 14 | 15 | 16 | 17 | 18 | 19 | 20 | 21 | 22 | 23 | 24 | 25 | 26 | 27 | 28 |  |  |  |
| DECEMBER                                                             |                                                                            |                                                                         |                                                                                                                                                                                                                                                                                                                                                                                                                                                                                                                                                                                                                              |                                   |                                              |                                                                             |  |  |  |  |  |   |   |   |   |   |   |   |  |  |  |  |   |   |   |   |   |   |   |   |   |    |    |    |    |    |    |    |    |    |    |    |    |    |    |    |    |    |    |    |    |    |    |                                                                                                                    |                                                                                                                                                                                                                                                                                                                                                                                                                                                                                                                                                                                                                        |          |  |  |  |  |  |  |   |   |   |   |   |   |   |  |  |  |  |   |   |   |   |   |   |   |   |   |    |    |    |    |    |    |    |    |    |    |    |    |    |    |    |    |    |    |    |  |  |  |
| S                                                                    | M                                                                          | T                                                                       | W                                                                                                                                                                                                                                                                                                                                                                                                                                                                                                                                                                                                                            | T                                 | F                                            | S                                                                           |  |  |  |  |  |   |   |   |   |   |   |   |  |  |  |  |   |   |   |   |   |   |   |   |   |    |    |    |    |    |    |    |    |    |    |    |    |    |    |    |    |    |    |    |    |    |    |                                                                                                                    |                                                                                                                                                                                                                                                                                                                                                                                                                                                                                                                                                                                                                        |          |  |  |  |  |  |  |   |   |   |   |   |   |   |  |  |  |  |   |   |   |   |   |   |   |   |   |    |    |    |    |    |    |    |    |    |    |    |    |    |    |    |    |    |    |    |  |  |  |
|                                                                      |                                                                            |                                                                         |                                                                                                                                                                                                                                                                                                                                                                                                                                                                                                                                                                                                                              | 1                                 | 2                                            | 3                                                                           |  |  |  |  |  |   |   |   |   |   |   |   |  |  |  |  |   |   |   |   |   |   |   |   |   |    |    |    |    |    |    |    |    |    |    |    |    |    |    |    |    |    |    |    |    |    |    |                                                                                                                    |                                                                                                                                                                                                                                                                                                                                                                                                                                                                                                                                                                                                                        |          |  |  |  |  |  |  |   |   |   |   |   |   |   |  |  |  |  |   |   |   |   |   |   |   |   |   |    |    |    |    |    |    |    |    |    |    |    |    |    |    |    |    |    |    |    |  |  |  |
| 4                                                                    | 5                                                                          | 6                                                                       | 7                                                                                                                                                                                                                                                                                                                                                                                                                                                                                                                                                                                                                            | 8                                 | 9                                            | 10                                                                          |  |  |  |  |  |   |   |   |   |   |   |   |  |  |  |  |   |   |   |   |   |   |   |   |   |    |    |    |    |    |    |    |    |    |    |    |    |    |    |    |    |    |    |    |    |    |    |                                                                                                                    |                                                                                                                                                                                                                                                                                                                                                                                                                                                                                                                                                                                                                        |          |  |  |  |  |  |  |   |   |   |   |   |   |   |  |  |  |  |   |   |   |   |   |   |   |   |   |    |    |    |    |    |    |    |    |    |    |    |    |    |    |    |    |    |    |    |  |  |  |
| 11                                                                   | 12                                                                         | 13                                                                      | 14                                                                                                                                                                                                                                                                                                                                                                                                                                                                                                                                                                                                                           | 15                                | 16                                           | 17                                                                          |  |  |  |  |  |   |   |   |   |   |   |   |  |  |  |  |   |   |   |   |   |   |   |   |   |    |    |    |    |    |    |    |    |    |    |    |    |    |    |    |    |    |    |    |    |    |    |                                                                                                                    |                                                                                                                                                                                                                                                                                                                                                                                                                                                                                                                                                                                                                        |          |  |  |  |  |  |  |   |   |   |   |   |   |   |  |  |  |  |   |   |   |   |   |   |   |   |   |    |    |    |    |    |    |    |    |    |    |    |    |    |    |    |    |    |    |    |  |  |  |
| 18                                                                   | 19                                                                         | 20                                                                      | 21                                                                                                                                                                                                                                                                                                                                                                                                                                                                                                                                                                                                                           | 22                                | 23                                           | 24                                                                          |  |  |  |  |  |   |   |   |   |   |   |   |  |  |  |  |   |   |   |   |   |   |   |   |   |    |    |    |    |    |    |    |    |    |    |    |    |    |    |    |    |    |    |    |    |    |    |                                                                                                                    |                                                                                                                                                                                                                                                                                                                                                                                                                                                                                                                                                                                                                        |          |  |  |  |  |  |  |   |   |   |   |   |   |   |  |  |  |  |   |   |   |   |   |   |   |   |   |    |    |    |    |    |    |    |    |    |    |    |    |    |    |    |    |    |    |    |  |  |  |
| 25                                                                   | 26                                                                         | 27                                                                      | 28                                                                                                                                                                                                                                                                                                                                                                                                                                                                                                                                                                                                                           | 29                                | 30                                           | 31                                                                          |  |  |  |  |  |   |   |   |   |   |   |   |  |  |  |  |   |   |   |   |   |   |   |   |   |    |    |    |    |    |    |    |    |    |    |    |    |    |    |    |    |    |    |    |    |    |    |                                                                                                                    |                                                                                                                                                                                                                                                                                                                                                                                                                                                                                                                                                                                                                        |          |  |  |  |  |  |  |   |   |   |   |   |   |   |  |  |  |  |   |   |   |   |   |   |   |   |   |    |    |    |    |    |    |    |    |    |    |    |    |    |    |    |    |    |    |    |  |  |  |
| FEBRUARY                                                             |                                                                            |                                                                         |                                                                                                                                                                                                                                                                                                                                                                                                                                                                                                                                                                                                                              |                                   |                                              |                                                                             |  |  |  |  |  |   |   |   |   |   |   |   |  |  |  |  |   |   |   |   |   |   |   |   |   |    |    |    |    |    |    |    |    |    |    |    |    |    |    |    |    |    |    |    |    |    |    |                                                                                                                    |                                                                                                                                                                                                                                                                                                                                                                                                                                                                                                                                                                                                                        |          |  |  |  |  |  |  |   |   |   |   |   |   |   |  |  |  |  |   |   |   |   |   |   |   |   |   |    |    |    |    |    |    |    |    |    |    |    |    |    |    |    |    |    |    |    |  |  |  |
| S                                                                    | M                                                                          | T                                                                       | W                                                                                                                                                                                                                                                                                                                                                                                                                                                                                                                                                                                                                            | T                                 | F                                            | S                                                                           |  |  |  |  |  |   |   |   |   |   |   |   |  |  |  |  |   |   |   |   |   |   |   |   |   |    |    |    |    |    |    |    |    |    |    |    |    |    |    |    |    |    |    |    |    |    |    |                                                                                                                    |                                                                                                                                                                                                                                                                                                                                                                                                                                                                                                                                                                                                                        |          |  |  |  |  |  |  |   |   |   |   |   |   |   |  |  |  |  |   |   |   |   |   |   |   |   |   |    |    |    |    |    |    |    |    |    |    |    |    |    |    |    |    |    |    |    |  |  |  |
|                                                                      |                                                                            |                                                                         |                                                                                                                                                                                                                                                                                                                                                                                                                                                                                                                                                                                                                              | 1                                 | 2                                            | 3                                                                           |  |  |  |  |  |   |   |   |   |   |   |   |  |  |  |  |   |   |   |   |   |   |   |   |   |    |    |    |    |    |    |    |    |    |    |    |    |    |    |    |    |    |    |    |    |    |    |                                                                                                                    |                                                                                                                                                                                                                                                                                                                                                                                                                                                                                                                                                                                                                        |          |  |  |  |  |  |  |   |   |   |   |   |   |   |  |  |  |  |   |   |   |   |   |   |   |   |   |    |    |    |    |    |    |    |    |    |    |    |    |    |    |    |    |    |    |    |  |  |  |
| 4                                                                    | 5                                                                          | 6                                                                       | 7                                                                                                                                                                                                                                                                                                                                                                                                                                                                                                                                                                                                                            | 8                                 | 9                                            | 10                                                                          |  |  |  |  |  |   |   |   |   |   |   |   |  |  |  |  |   |   |   |   |   |   |   |   |   |    |    |    |    |    |    |    |    |    |    |    |    |    |    |    |    |    |    |    |    |    |    |                                                                                                                    |                                                                                                                                                                                                                                                                                                                                                                                                                                                                                                                                                                                                                        |          |  |  |  |  |  |  |   |   |   |   |   |   |   |  |  |  |  |   |   |   |   |   |   |   |   |   |    |    |    |    |    |    |    |    |    |    |    |    |    |    |    |    |    |    |    |  |  |  |
| 11                                                                   | 12                                                                         | 13                                                                      | 14                                                                                                                                                                                                                                                                                                                                                                                                                                                                                                                                                                                                                           | 15                                | 16                                           | 17                                                                          |  |  |  |  |  |   |   |   |   |   |   |   |  |  |  |  |   |   |   |   |   |   |   |   |   |    |    |    |    |    |    |    |    |    |    |    |    |    |    |    |    |    |    |    |    |    |    |                                                                                                                    |                                                                                                                                                                                                                                                                                                                                                                                                                                                                                                                                                                                                                        |          |  |  |  |  |  |  |   |   |   |   |   |   |   |  |  |  |  |   |   |   |   |   |   |   |   |   |    |    |    |    |    |    |    |    |    |    |    |    |    |    |    |    |    |    |    |  |  |  |
| 18                                                                   | 19                                                                         | 20                                                                      | 21                                                                                                                                                                                                                                                                                                                                                                                                                                                                                                                                                                                                                           | 22                                | 23                                           | 24                                                                          |  |  |  |  |  |   |   |   |   |   |   |   |  |  |  |  |   |   |   |   |   |   |   |   |   |    |    |    |    |    |    |    |    |    |    |    |    |    |    |    |    |    |    |    |    |    |    |                                                                                                                    |                                                                                                                                                                                                                                                                                                                                                                                                                                                                                                                                                                                                                        |          |  |  |  |  |  |  |   |   |   |   |   |   |   |  |  |  |  |   |   |   |   |   |   |   |   |   |    |    |    |    |    |    |    |    |    |    |    |    |    |    |    |    |    |    |    |  |  |  |
| 25                                                                   | 26                                                                         | 27                                                                      | 28                                                                                                                                                                                                                                                                                                                                                                                                                                                                                                                                                                                                                           |                                   |                                              |                                                                             |  |  |  |  |  |   |   |   |   |   |   |   |  |  |  |  |   |   |   |   |   |   |   |   |   |    |    |    |    |    |    |    |    |    |    |    |    |    |    |    |    |    |    |    |    |    |    |                                                                                                                    |                                                                                                                                                                                                                                                                                                                                                                                                                                                                                                                                                                                                                        |          |  |  |  |  |  |  |   |   |   |   |   |   |   |  |  |  |  |   |   |   |   |   |   |   |   |   |    |    |    |    |    |    |    |    |    |    |    |    |    |    |    |    |    |    |    |  |  |  |

**Kipcon Inc.**  
1225 Livingston Avenue  
North Brunswick, NJ 08902

**Mitchell H. Frumkin, P.E., R.S.**  
President

telephone: (732) 220-0200  
toll free: (800) 828-4118  
facsimile: (732) 220-9017  
e-mail: info@kipcon.com  
mfrumkin@kipcon.com  
internet: http://www.kipcon.com

**KIPCON**  
Engineers/Inspectors

## FIRST PROPERTY MANAGEMENT SOLUTION

**ARIE BEHAR**  
PRESIDENT

PHONE: 732-937-5080      525 MILLTOWN ROAD  
FAX: 732-937-5088      SUITE 205  
CELL: 732-236-8867      NORTH BRUNSWICK, N.J. 08902  
E-MAIL: ARIEBEHAR@COMCAST.NET

## LIKE MOST AMERICANS, YOU PROBABLY SPEND MOST OF YOUR TIME EARNING YOUR MONEY

*But, how much time do you actually spend managing it?*

*At Wachovia Securities, we can help you manage and protect your wealth by:*

- Helping you plan your portfolio, research your stocks, prepare an asset allocation plan and implement and track your plan
- Consolidating your brokerage and banking accounts into one asset management account to help with bill paying and expense tracking
- Providing access to your brokerage and banking accounts online

*For more information, call:*

**Bruce M. Weinstein**  
Senior Vice President – Investment Officer  
989 Lenox Drive, Suite 200  
Lawrenceville, NJ 08648  
888-219-2538 • 609-896-4625

SECURITIES AND INSURANCE PRODUCTS:  
 NOT INSURED BY FDIC OR ANY FEDERAL GOVERNMENT AGENCY • MAY LOSE VALUE  
 NOT A DEPOSIT OR GUARANTEED BY A BANK OR ANY BANK AFFILIATE  
 Wachovia Securities, LLC, member NYSE & SIPC, is a registered broker-dealer and a separate non-bank affiliate of Wachovia Corporation. ©2005 Wachovia Securities, LLC 62540 5/05